

*The new*  
**Sport Sedan Landau**  
*combines the charm of many cars*

As if to summarize, in one model, all the charm for which Pierce-Arrow has so long been noted, the five-passenger Sport Sedan Landau proudly takes its place among today's foremost motor cars.

The superb Pierce-Arrow body of hand-hammered aluminum—to which the low, rakish, leather landau back, adorned with Victoria irons, imparts a smart continental flavor—is mounted on the famous 130-inch Series 80 chassis, with its mighty, silent engine.

In every detail, the richly appointed interior is fully in keeping with a car of such spirited aspect.

Handbuilt, the Sport Sedan Landau not only evidences the traditional Pierce-Arrow quality in beauty and finish; but through the years and over the miles it will be found far more economical to own and to use than an ordinary car. It may be had in a wide range of color and upholstery.

Only a limited number will be available this season. Orders, of course, must be filled in rotation. Ask us to turn a Sport Sedan Landau over to you so that you may see for yourself how splendidly it meets your requirements.

Standard Series 80 chassis. 14 to 17 miles per gallon of gasoline. 15,000 to 18,000 miles per tire. Nation-wide Pierce-Arrow Flat Rate Service effects great operating economy. Houdaille double-acting shock absorbers and special Pierce-Arrow 4-wheel brakes are standard equipment.

The price of the Sport Sedan Landau is **\$3025** plus tax and transportation  
 Wire wheels and cowl lamps extra

Other cars up to \$8000

# PIERCE-ARROW

*A small down payment gives you immediate delivery  
 Your present car accepted as cash*

## TOM HAY AND SON

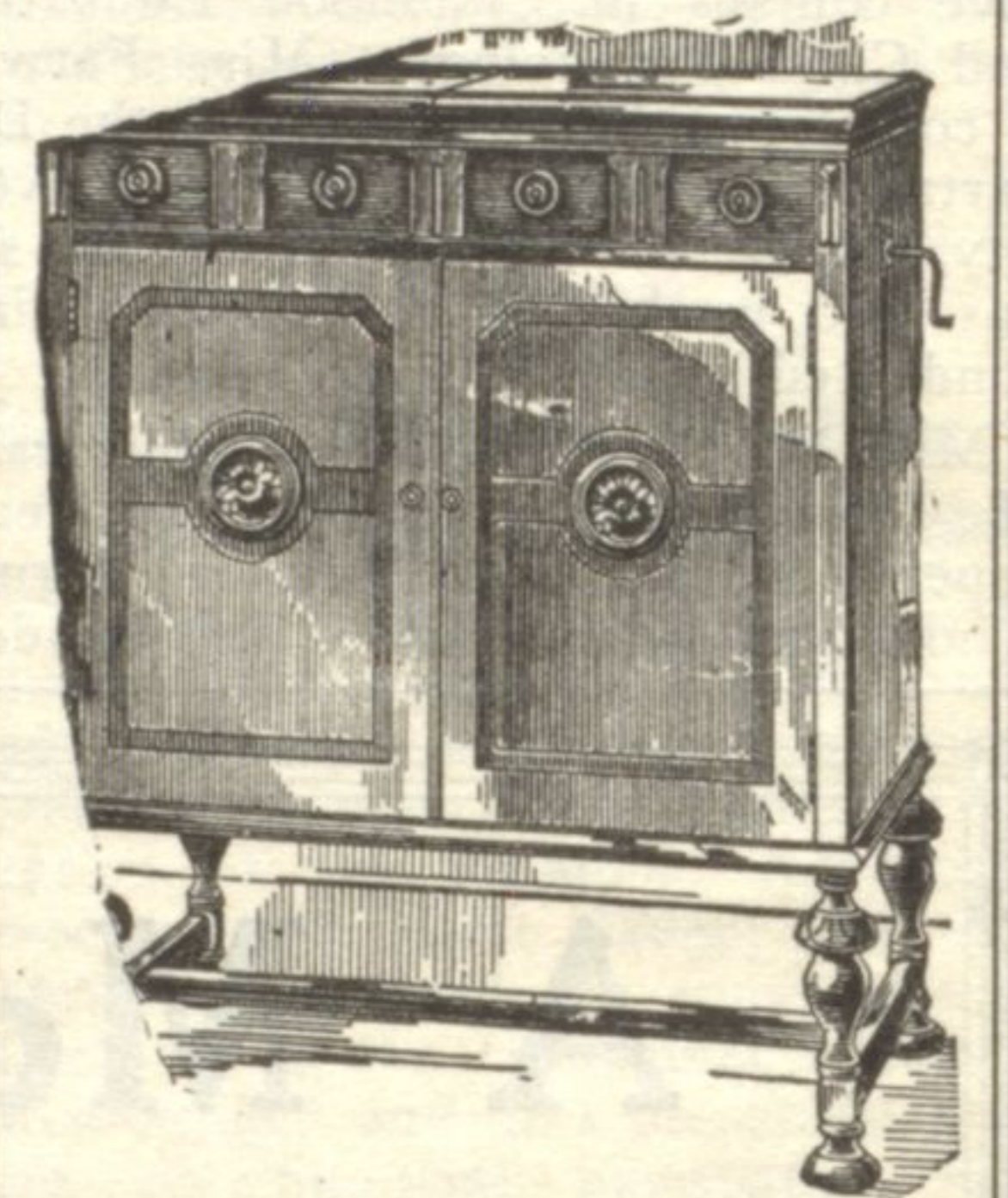
1819 RIDGE AVENUE EVANSTON

Greenleaf 50  
 OPEN EVENINGS AND SUNDAYS

### BAHAI LECTURES

Albert R. Vail of Evanston, a renowned Bahai teacher, will deliver an address on the "Power of Prayer" Sunday, September 18, at 3 p. m., in the studio of Louis Bourgeois, architect, 536 Sheridan road, Wilmette. Headquarters of the assembly, public library, and reading room at 112 Linden avenue, where literature and information as to the scope and purpose of the future work can be obtained, are open daily. Visitors from all parts of this country and Canada, also from Europe, Persia, Japan, Hawaii, and Australia, have been on the grounds during the past nine months. They arrive singly and in groups of 50 or more. Classes from various general and religious educational institutions at and near Chicago make special visits. Conferences for amity between colored and white races throughout the United States are being arranged by the national inter-racial committee. The first of the series, at Green Acre, Eliot, Maine, July 22 and 23, was largely attended and addressed by eminent educators and professors and publicists of various races. Plans are being made for one in Wilmette in the near future. It is understood that meetings will be resumed in the Temple basement with the advent of cool weather.

### The Musical Miracle



### The New Orthophonic **VICTROLA** with Radiola

In the delicate Italian style, Florenza Model, you will find the very soul of music, combined with the countless advantages of Radiola.

COME IN AND  
 HEAR IT!

*Convenient Terms*

A liberal allowance will be made for your old instrument on one of these new ORTHOPHONIC RADIOLA combinations.

**NORTH SHORE TALKING  
 MACHINE CO.**



712 Church  
 Street  
 Evanston



Open Evenings