



North Shore Golf Clubs



Kildeer, New Club, Has 36 Hole Golf Course

Formed Less Than Year Ago There Are Now 400 Members

North Shore Provides Big Quota of Players—Club Located Just Northwest of Wheeling

This is the thirteenth article of a series telling about the great golf clubs of the north shore. It is the story of a new thirty-six hole course which promises to give all the joys to be found in golf. Another article will appear next week.

By RAY C. PEARSON

FIRST off we are told when visiting the Kildeer Country club, one of the most recent arrivals in golfdom, that this new club is one of not more than three or four private clubs in the Chicago District which has the distinction of possessing a 36-hole course. And after looking over the course one is inclined to the opinion that that distinction is worth boasting about.

Kildeer is a forceful reminder of how the ancient and honorable game of golf has grown on the North Shore. It is still growing. Here is a concrete example of golf's popularity. Kildeer is located six miles northwest of the village of Wheeling on the McHenry road. That's approximately thirty-three miles from Chicago's loop. Distance apparently does not dampen the enthusiasm of those who demand golf.

North Shore Furnishes Members

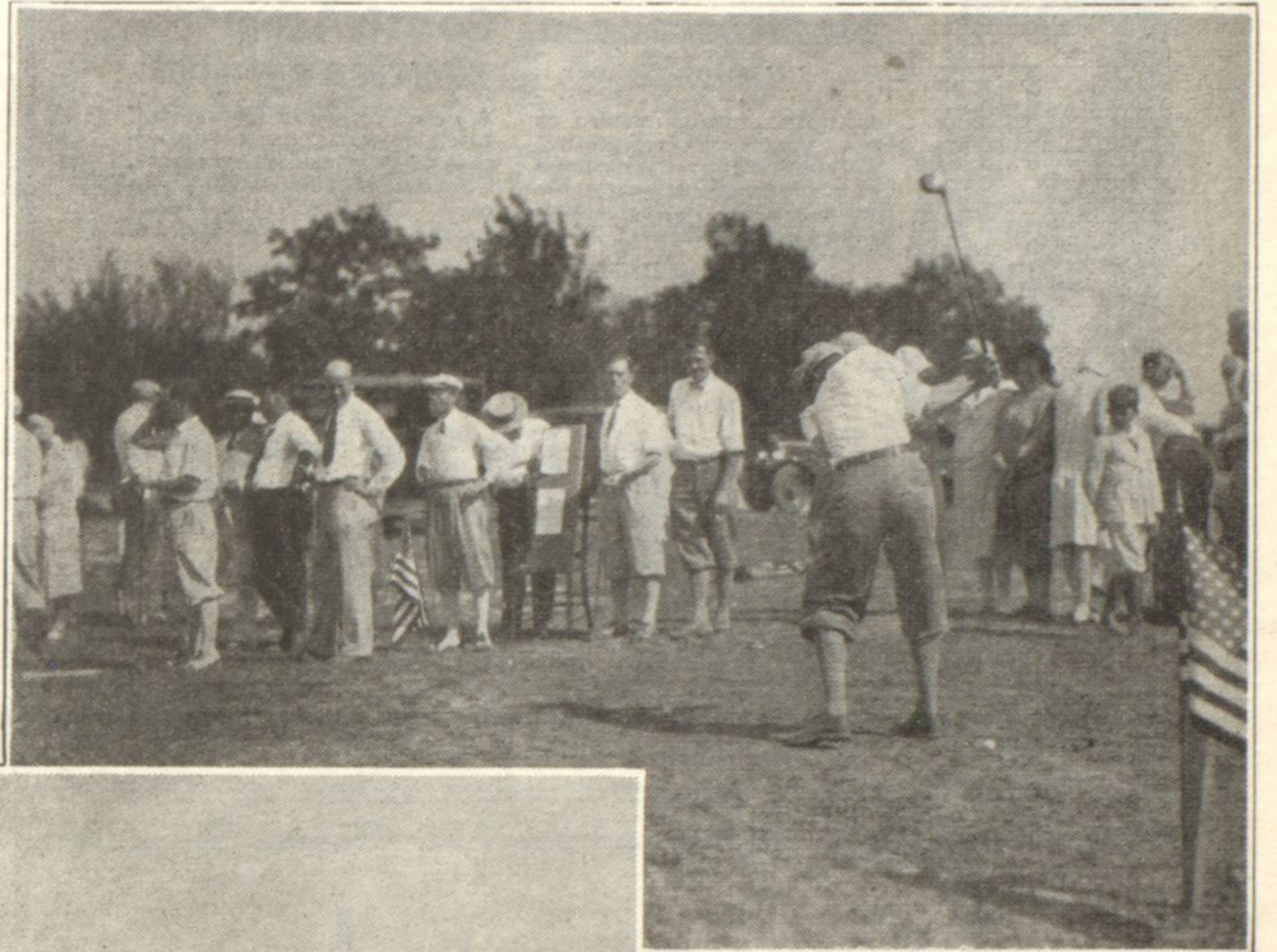
We have mentioned distance, but we are informed by those who started the club that the matter of mileage never was considered. It is not the Loop which is furnishing the members for Kildeer. Talking with one of the officials of the club we quickly heard what we have often heard before—it is golfers of the North Shore, who in the main, are filling up the membership.

But not entirely the North Shore. Kildeer is so ideally situated (it is equally as close to Oak Park and some other suburbs west of Chicago) that this new club, which hasn't even celebrated its first birthday, today has 400 members. It would be hard to find a club which filled its membership as quickly.

Those men who saw and met the demand for Kildeer have decided that the membership will be restricted to 625. It is a golf club in all that that name implies, but also it is something else. It is a family club. Mother and the children are to enjoy it just as much as Daddy who shoots a wicked game.

Kildeer was started in October of last year when a group of twenty young men got together and organized the club. It was incorporated with the usual "not for profit" clause included.

THE PICTURES: Players in driving contest on practice fairway north of clubhouse hill (top); Clubhouse hill looking toward first tees (center); View showing two number nine holes (bottom).



Some of these men belonged to other clubs and some of them still do, but they wanted a new club. Kildeer was not "promoted." It was formed to give the members and their families a playground, with all advantages of a real club and that too at a nominal cost.

How Land Was Bought

In looking for a site those who did the scouting located the land on the McHenry road. They looked no farther. There is an interesting little story in this connection. Part of the land they now hold was bought dirt cheap. But it wasn't enough. There was some acreage that was wanted.

They went to the owner. He hopped the price so that it was double what the club men had paid for the other land.

The owner who had demanded so much for his land finally asked what it was wanted for. When informed that it was the plan to build a thirty-six hole golf course, he smiled.

"Well," he said "if that's what you want my land for you may have it for the same price you paid for the other tract. But if you don't build that thirty hole golf course, you'll have to turn my land back to me for the same price you pay for it."

That stipulation appears in the bill

of sale. The club has fulfilled its part of that contract. The golf club owns 269 acres of ground. It is easily big enough for the two 18-hole courses and there are thirty acres besides, which are not being used. The club has been offered nearly double what it paid for those thirty acres. It doesn't intend to sell.

All the land and the course were paid for by the memberships and work soon is to be started on a clubhouse which is to cost \$150,000. It is expected the clubhouse will be ready early next year and the grand opening already has been scheduled for July 4. The clubhouse debt will be bonded.

Named After Bird

Being inquisitive we asked how the clubhouse happened to be named Kildeer. We learned that the men who formed the club found so many kilddeer flying and nesting on the land when they bought it that that settled the question of a name very easily.

The golf course is hilly and rolling and well wooded. Two big artificial lagoons have been built into it and these are crossed five times by a player "doing" thirty-six holes. The course also is well trapped. The two 18-hole courses are so built that each swings over the entire acreage. They are so joined that there is possible 36 holes of continuous golf. One course is 6,394 yards with a par of 72. The other is 6,518, with a par of 71. At the present time eighteen holes are being played. On September 1 the second eighteen will be opened to play.

Kildeer is an all-year-around club. Having mentioned that it is a family club we'll jot down these points: There are to be four tennis courts, baseball diamonds, a completely equipped children's playground, and indoor play rooms in a separate building. In the winter it is planned to have skating on the lagoons and there will be tobogganing and other ice sports.

The officers of the club are: president, C. D. Wagstaff; secretary, A. E. Biernes; treasurer, L. K. Knapp; directors, J. H. Balsh, Dr. F. W. Burcky, G. F. Kremm, A. C. Lexow, R. N. Melin, D. E. Nichols, E. E. Nilles, G. D. Owsley, R. D. Shanesy.