

Member } CHICAGO REAL ESTATE BOARD
 } NORTH SHORE REAL ESTATE BOARD

W. G. Stacey & Co.

NORTH SHORE REALTORS

We continue to offer our efficient service in Wilmette, Kenilworth, Winnetka, Glencoe, Ravinia and Highland Park.

Careful analysis made of the problems of both Buyer and Seller.

If you want honest effort to sell your property, list it with us.

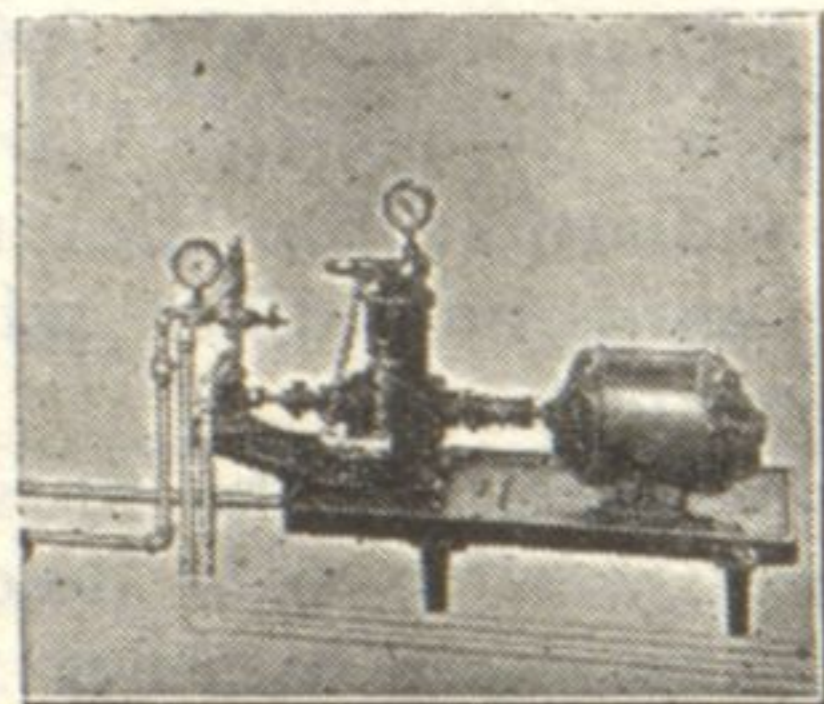
All branches of insurance placed with the most responsible companies.

Consult us when contemplating a loan.

Houses, apartments and stores for rent.

10 Years in Business on Linden Avenue

336 LINDEN AVENUE PHONES WIL. 308 and 3805



The Combustion Fuel Oil Burner

For the man who cares. Simple—long life construction. Burns the cheaper oils. Small homes to skyscrapers

Seven Years on the North Shore

607 MAIN ST. PHONE WILMETTE 3420

TELEPHONE WILMETTE 1644



404 LINDEN AVENUE

Opposite Northwestern L Terminal

WILMETTE, ILLINOIS

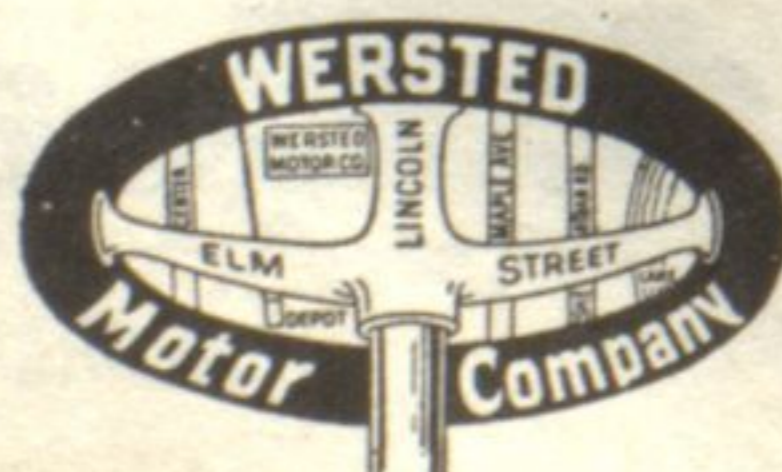
VACANT HOMES ACRES

PATRONIZE OUR ADVERTISERS

PAINT YOUR CAR NOW

BETTER SERVICE — BETTER PRICES

Complete



Service

562 Lincoln Ave. WINNETKA Phone Winn. 165

Acresage Sales in Wheeling Region Display Activity

Recent sales in Wheeling and surrounding territory announced by O. W. Walker, the new broker in that town, show a very active market:

Ernestine M. Wick to Julius Meinken, Lots 4 and 5, of Janner's Addition to Wheeling, price \$7,500.

Luida Bollenbach to Syndicate, Lots 11 and 12, County Clerk's Plat of Wheeling, price \$6,000.

Lots 6, 7, 8 and 9, County Clerk's Plat of Wheeling, for Ben Stryker to State Bank & Trust company, Evanston, trustee, price \$32,000.

Louis B. Anderson to Julius Meinken, Lot 2 of Forkes Torrents Addition to Wheeling, price \$5,800.

Fred Blume to Thomas Fannigan, West 1/2 of Southwest 1/4 of Section 24, Palatine township, 47 acres, price \$28,000.

John Hamkier to Thomas Fannigan, North 1/2 of Northeast 1/4 of Section 25 Palatine township, 98 acres, price \$58,000.

J. P. Moehling to Thomas Fannigan Northwest 1/4 of Section 25, of Palatine township, 118 acres, price \$84,000.

Conrad Moehling to Thomas Fannigan, South 1/2 of Northwest 1/4 of Section 25. 100 acres, price \$77,500.

Walter Krause, Jr., of Arlington Heights represented Mr. Fannigan in all of his transactions.

North Shore New Field for Scott, Builder of Homes

Arthur Scott has just completed his nine-room house on Fuller Lane and expects to move in immediately. It is of English type, built of stone and brick, located at 176 Fuller lane.

Mr. Scott is one of the charter members of the Sunset Ridge Country club and has been associated with the firm of V. J. Curto and company for the past eight years in the real estate business. He has constructed several apartment and store buildings on the north side of Chicago and is now building three homes in Wilmette at 17th street and Spencer avenue. He expects to devote his time in the future to home building on the north shore.

Mr. Scott has a son attending the University of Illinois, and a daughter who will commence her first year in the New Trier High school in the fall.

The books are now open for box reservations in the new grandstand at the Illinois State Fair, and applications are being received by W. W. Lindley, general manager.

A telephone call or visit to our offices will quickly put you in touch with information regarding particularly choice living quarters available for October possession.

SMART & GOLEE

1564 SHERMAN AVENUE
EVANSTON
UNIVERSITY 285

NEW HYDRAULIC STONE NOW USED IN BUILDING

Reconstructed Product Is Water and Fire Proof and Self Insulating

Much interest in building circles is centered in the product of the Hydraulic Art Stone company, a hydraulic reconstructed stone for general building purposes, which is waterproof, fire-proof, self insulating and which it is claimed may be used equally well for foundation work or for above ground construction.

It may be had in a variety of colors and styles of face, including a splendid imitation of the prettiest marble. It is material equally suited for bungalows, houses and apartments, factories and clubs, as well as for decorative purposes. It may be used as a solid wall or as a veneer.

Cement, subjected to a most terrific hydraulic pressure, after the surface of the reconstructed stone has first been treated to render any of the scores of possible designs required by the builder, eliminates the untold ages which were required for the formation of natural stone, which, by comparison is less beautiful and, it is claimed, less substantial than the reconstructed stone.

The new plant from which this product is being turned out in large quantities to supply the ever increasing demand, is located at Half Day, near Prairie View, on Route No. 22, running east through Half Day to Highland and Highland Park.

F. E. Davenport, of 404 Gregory avenue, Wilmette, is in charge of sales for this company, which, since its plant started last March, has found it necessary of late to operate two shifts in order to keep up with the demands for the units.

Unauthorized Use of "Realtor" Is Branded a Fraud

The real estate dealer who represents to the public that he is entitled to designate himself "realtor" when in fact he is not a member of a constituent board of the National Association of Real Estate boards, is guilty of fraudulent practice, and persons making such unauthorized use of the term will be liable to revocation of their real estate license, according to a ruling of A. C. MacNulty, assistant secretary of state in charge of the administration of the New York real estate license law.

Eight court decisions in six states have upheld the exclusive right of the National Association of Real Estate boards and its member boards in 657 cities to the use of the membership designation "realtor," coined for the association to indicate active members of its constituent boards in good standing.

The state commission administering the New Jersey real estate license law some time ago made a ruling similar to the New York ruling.

Butterfield Rd. Is Made Official State Route

Butterfield road has been officially put on the state aid system as state aid road No. 25, according to Frank C. Wells. This is the route of one of the three "super-highways."

The first steel rails rolled in America were rolled at North Chicago, Ill., in 1865.