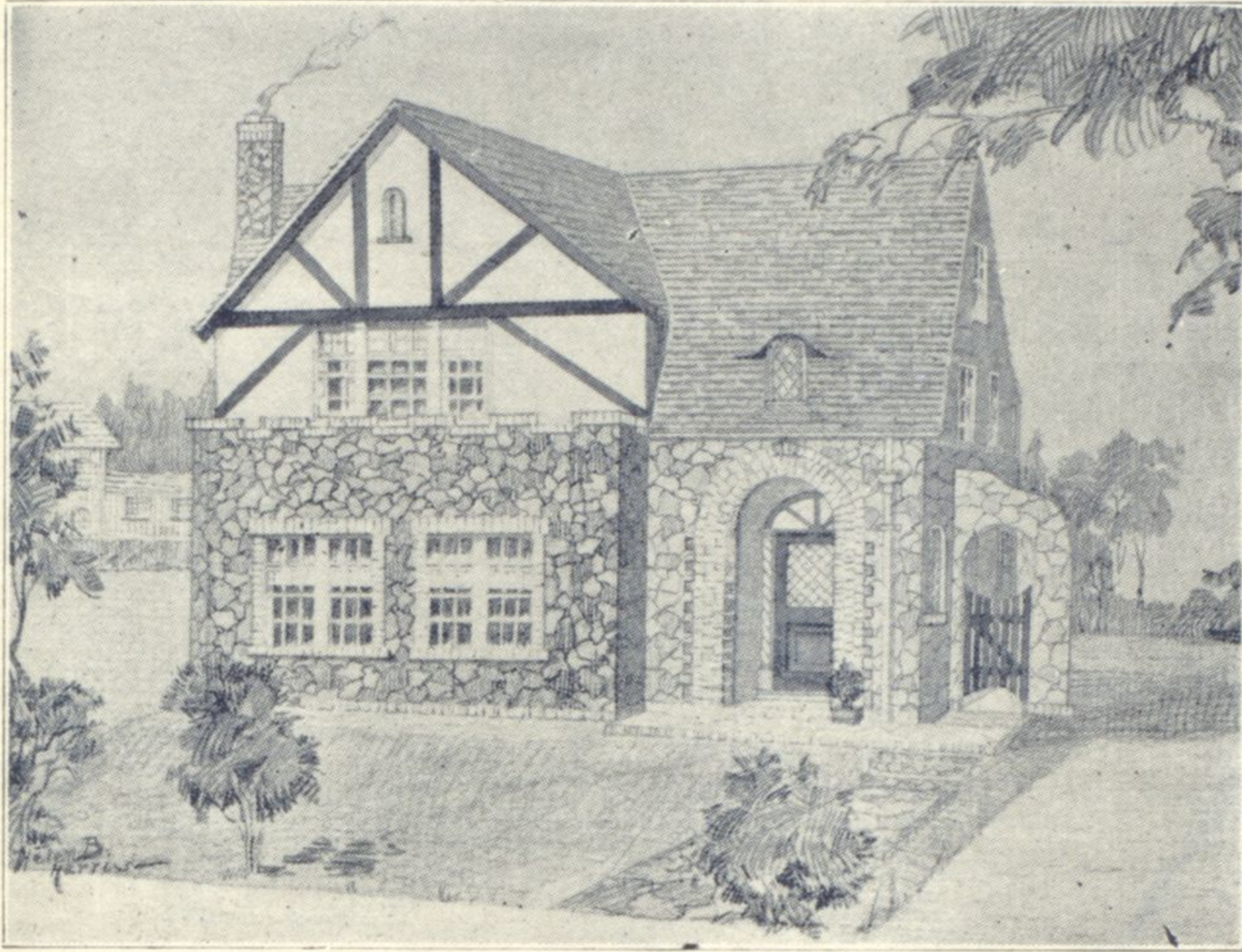


# Four New English Homes

East Side—South Glencoe



Here is pictured one of the four new homes, located immediately west of Green Bay Rd. and one block from Sheridan Rd. in the beautiful Hubbard Woods section.

The eight rooms, in addition to a large living room 27.6 by 16.6, dining room and kitchen, also include on the first floor maid's room with bath, breakfast nook and butler's pantry. The floor of the living room is one-step down from the hall and dining room. A large stone frame open hearth, wood-burning fireplace is an attractive feature of the living room.

On the second floor will be four master bedrooms, and two baths. The master bathroom also has a built-in shower stall.

One car attached garage.

The exterior is of stone and stucco, with brick trim.

The size of the lot is 59x300.

## E. T. Leonard Co.

Builders of Preferred Homes

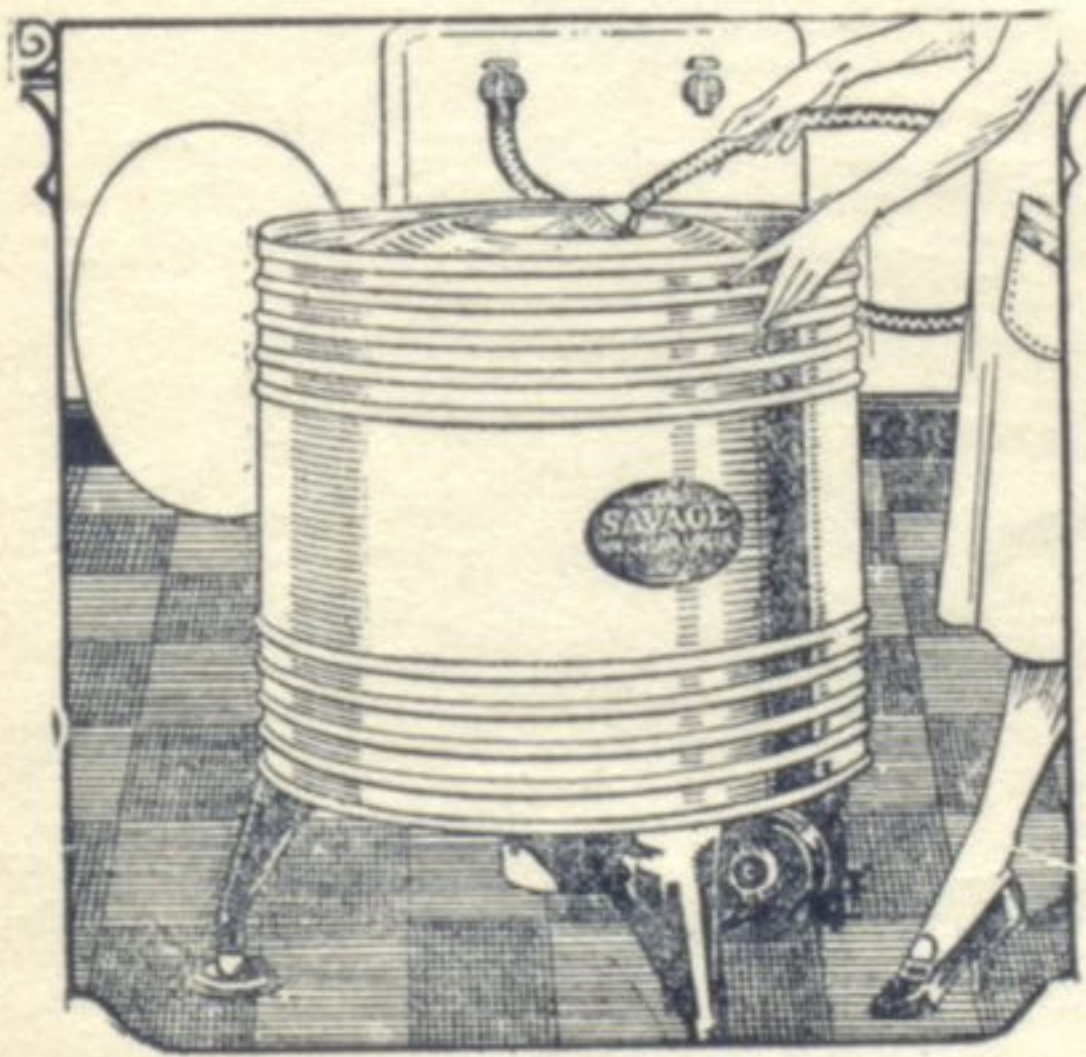
556 Center St.

Winnetka

Tel. Winn. 1949

**"Spin-Rinse, Spin Dry"**  
Means No More Hand Labor in Laundering

### SAVAGE WASHER & DRYER



In the fewest possible words, here are the simple steps in a Savage "Spin-Rinse, Spin-Dry" hand-laborless washday: Fill your Savage wringerless with water through the hose provided. *No lifting heavy buckets. No Hand Labor.*

Wash and Blue 10½ lbs. of dry clothes, or equivalent, in 15 minutes or less. *No Hand Labor.*

Rinse the whole load "Spin-Rinse" with scalding water direct from the faucet, in only 2 minutes. *No Hand Labor.*

Dry the entire tubful "Spin-Dried" for the line in one minute more, without wringing. *No Hand Labor.*

Empty. The Savage Ejector Pump empties all water into sink or drain. Drain connections supplied—no lifting of heavy buckets. *No Hand Labor.*



One simple switch controls all operations.

A complete washing job, from clothes hamper to clothes line, in eighteen minutes per tubful, all without hand labor, without wringing or "set" tubs! That's only part of the fascinating Savage story of "Spin-Rinse, Spin-Dry."

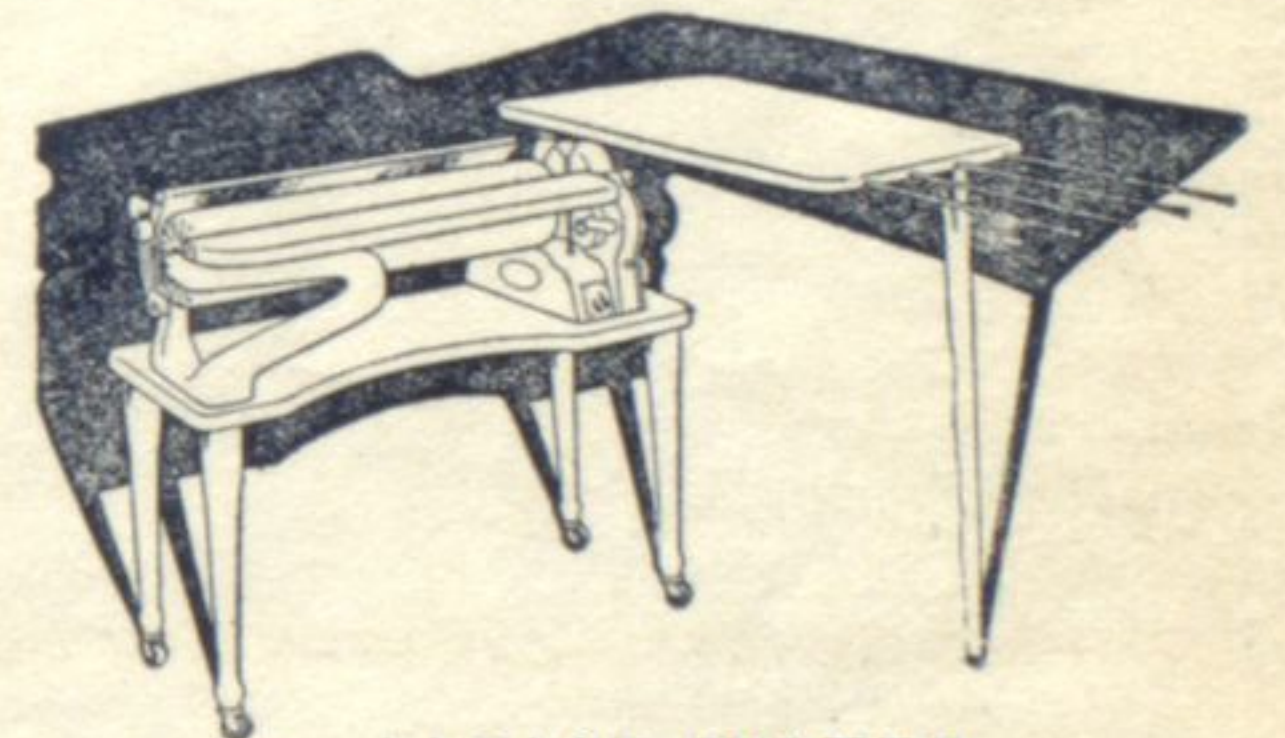
Write for all the facts. A demonstration is a revelation!

Manufactured and Guaranteed by SAVAGE ARMS CORPORATION, UTICA, N. Y.



A touch of the toe empties the tank.

The Better Way  
for Ironing



SAVAGE IRONER

Instantaneous Control  
Means Restful Ironing

THE Savage All-Electric Ironer with its easy, instantaneous "touch" control leaving hands and mind free and at ease. It makes for genuine restful ironing, however large the wash. Just a slight pressure of either forearm, finger, or elbow downward upon the control feedboard and the shoe is automatically brought in contact with the roll, ready for ironing. Another slight pressure and the shoe is released.

Only the Savage has this complete, instantaneous control. The most important feature for rapid, restful ironing. The Savage Ironer can be used for pressing too.

## VIC. J. KILLIAN

Plumbing Contractor

897 Linden Avenue

HUBBARD WOODS

Ph. Winnetka 1260