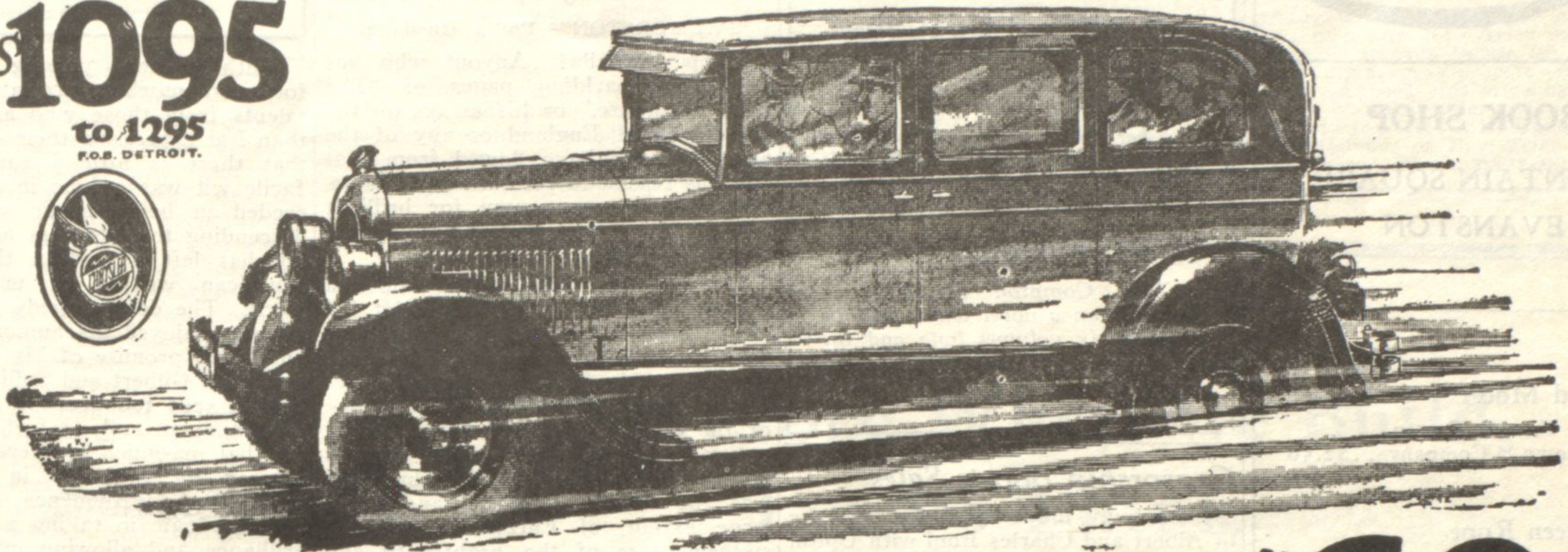


# CHRYSLER *Scores Again*

**\$1095**

to 1295  
F.O.B. DETROIT.



## GREAT NEW "62"

*New Standards of Performance—  
New Quality—New Value—New Luxury*

**W**ALTER P. CHRYSLER and his engineers present today a new car—the great six-cylinder "62"—which carries the name Chrysler still more emphatically to the head and front of the procession of engineering and manufacturing progress.

No one can see, or drive, or even read the general specifications of

the great new "62" without marveling at the value which Chrysler Standardized Quality has packed into its appearance, its manufacture and its unapproached performance.

Standardized Quality—extending its benefits to four great cars—specifying uniformity in high grade steels and all other materials—setting new standards of preci-

sion manufacture—cutting down costs but always raising quality to higher levels—this exclusive Chrysler principle makes it possible to produce in the great, new Chrysler "62" a six that leaps beyond the bounds of all competition.

Drive the great new "62" today. Any Chrysler dealer will gladly give you complete proof of its supreme value.

### Sensational Features of Quality and Value

62 and more miles per hour  
5 to 25 miles in 7¾ seconds  
22 miles to the gallon  
Six-cylinder motor  
Seven-bearing crankshaft  
Ventilated crankcase  
Invar-strut pistons  
Oil Filter. Air Cleaner  
New cellular type radiator  
Rubber engine mounting

Four-wheel hydraulic brakes  
Lower, more sweeping stream lines  
Longer, roomier bodies  
Saddle-spring seat cushions  
Fine figured mohair  
Drum-type Parabeam headlights  
Road Levelizers—front and rear  
Handsome 17-inch steering wheel with light control  
Steering wheel pitch easily adjustable to any driver

Maximum driving vision assured by smaller corner pillars  
Handsome, indirectly-lighted instrument panel  
Cadet visor on closed cars  
New type top with jack-knife fold on open bodies  
Rigid English type curtains for use with top down on touring car

Complete  
Line Now  
on Display

2-door Sedan, \$1320; Roadster (with rumble seat), \$1320; Coupe (with rumble seat), \$1420; 4-door Sedan, \$1420; Landau Sedan, \$1470. Delivered fully equipped.

## EVANSTON MOTOR SALES

1840 Ridge Avenue

W.D. Reagan, Mgr.

Wilmette 2277

CHRYSLER MODEL NUMBERS MEAN MILES PER HOUR