

BRAKES

Have Your Brakes Inspected Today—Tomorrow May Be Too Late!

Official Service Station for Lockheed Hydraulic and Four Wheel Brakes
BRAKES RELINED ON ALL CARS

Oldest and Largest Brake Service Station on North Shore. Six skilled and expert brake mechanics at your service. Just a phone call and we will be glad to call for and deliver your car for any service you may desire. Notice to garage and service stations: We carry a complete stock of Lockheed parts for any car.

Sales **PEERLESS** Service

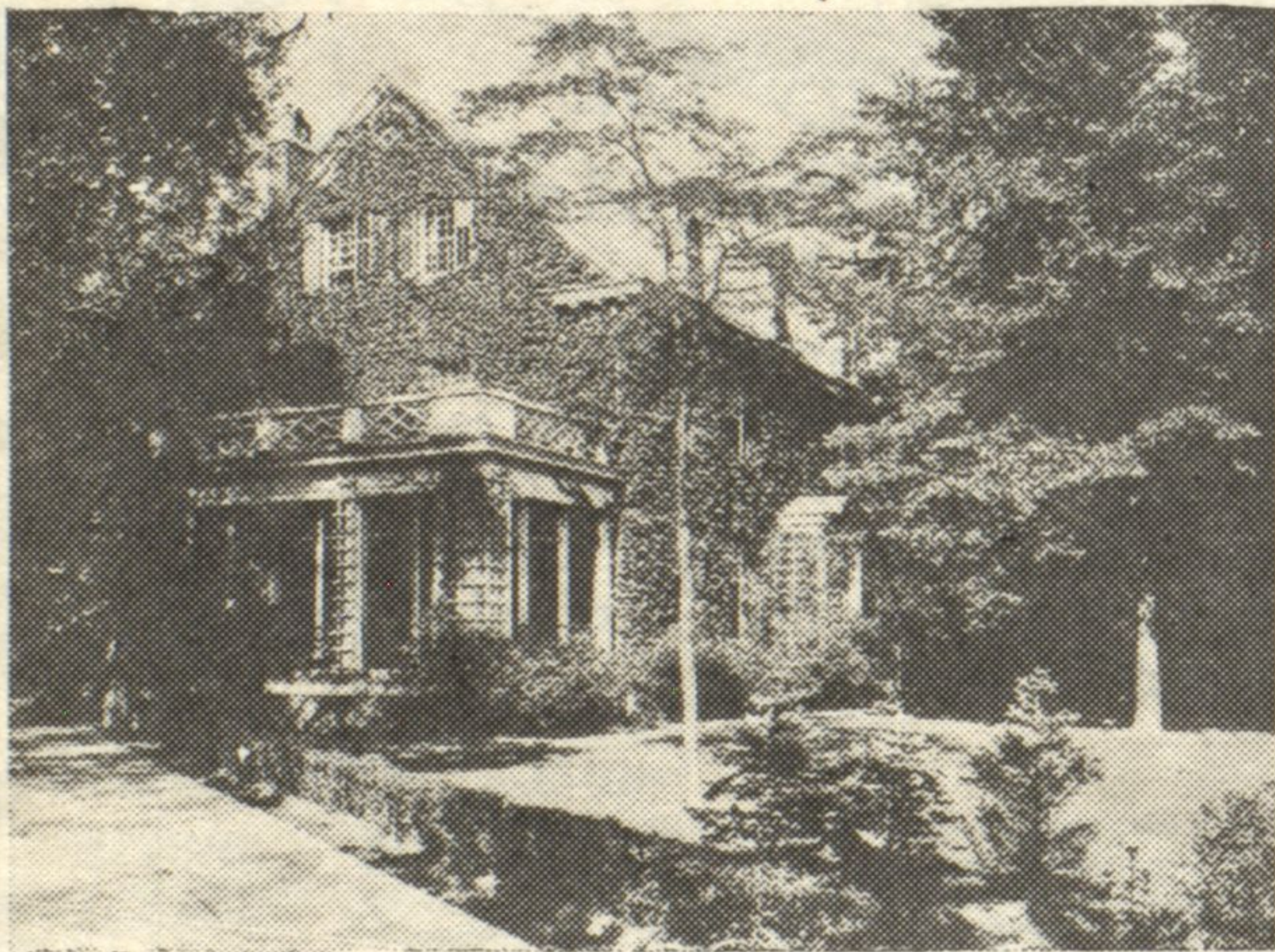
Six and Eight Cylinder MOTOR CARS

North Shore Automobile Co.

1735 BENSON AVENUE—EVANSTON, ILL.
Tel. University 1047-1048
Two Blocks North of Davis St. Elevated Station East Side of "L"

NORTHEAST WINNETKA

7 BEDROOMS, 4 BATHS—\$65,000



Owner, about to live in California, has decided to sell this superb brick on hollow tile residence, with a fine slate roof. There are 4 master bedrooms and 3 baths on 2nd floor, and a fine large finished bedroom and 2 servants' rooms and bath on 3rd floor. There is a large recreation room in the basement. There is an excellent butler's pantry; a charming sun room. Gutters, valleys, downspouts, etc. are of copper, and the beams are of steel, the construction being superfine throughout. The grounds are wonderfully landscaped and shrubbed and have an east frontage of 175 feet. There is a large, heated 2-car garage and a double driveway.

HEINSEN REALTY CO.

720 Elm Street, Winnetka

Phone Winnetka 254

Village Manager's Annual Report

(Continued from page 50)

Estimated taxes, 10% of gross Revenue	29,000
Net income	\$136,798
Interest on funded debt	40,000
Available for dividends	\$ 96,798
Dividends on Preferred Stock ..	28,000

Carried to surplus

The foregoing annual surplus of \$68,798 would permit a 20% reduction in lighting rates and still leave approximately \$28,000 as the operating surplus for the year.

Because of recent rate reductions by the Public Service company of Northern Illinois our rate schedule, particularly for lighting is from 15% to 20% above the rates of that company, and it is believed that the Council should seriously consider an adjustment of our lighting rates to meet those in adjoining communities. By careful economy in operation, it is believed that our net income can be held at a figure, sufficient to continue the regular 8% dividend and to provide adequately for depreciation and for property extensions, after such reduction.

During the year, the installation of the 2,000 K. W. turbo generator was completed, furnishing us generating capacity with adequate reserve units for at least two more years.

Cost Is \$79,576

The total cost of the new unit, including condenser, auxiliary equipment, steam exhaust and condenser piping, switchboard and foundations and building reconstruction was \$79,376, as compared with the original appropriation of \$65,000. This increase is largely due to

additional foundation expense, not originally anticipated, and also to the desirability of providing additional large piping for condenser cooling water for future units, not included in the original estimate.

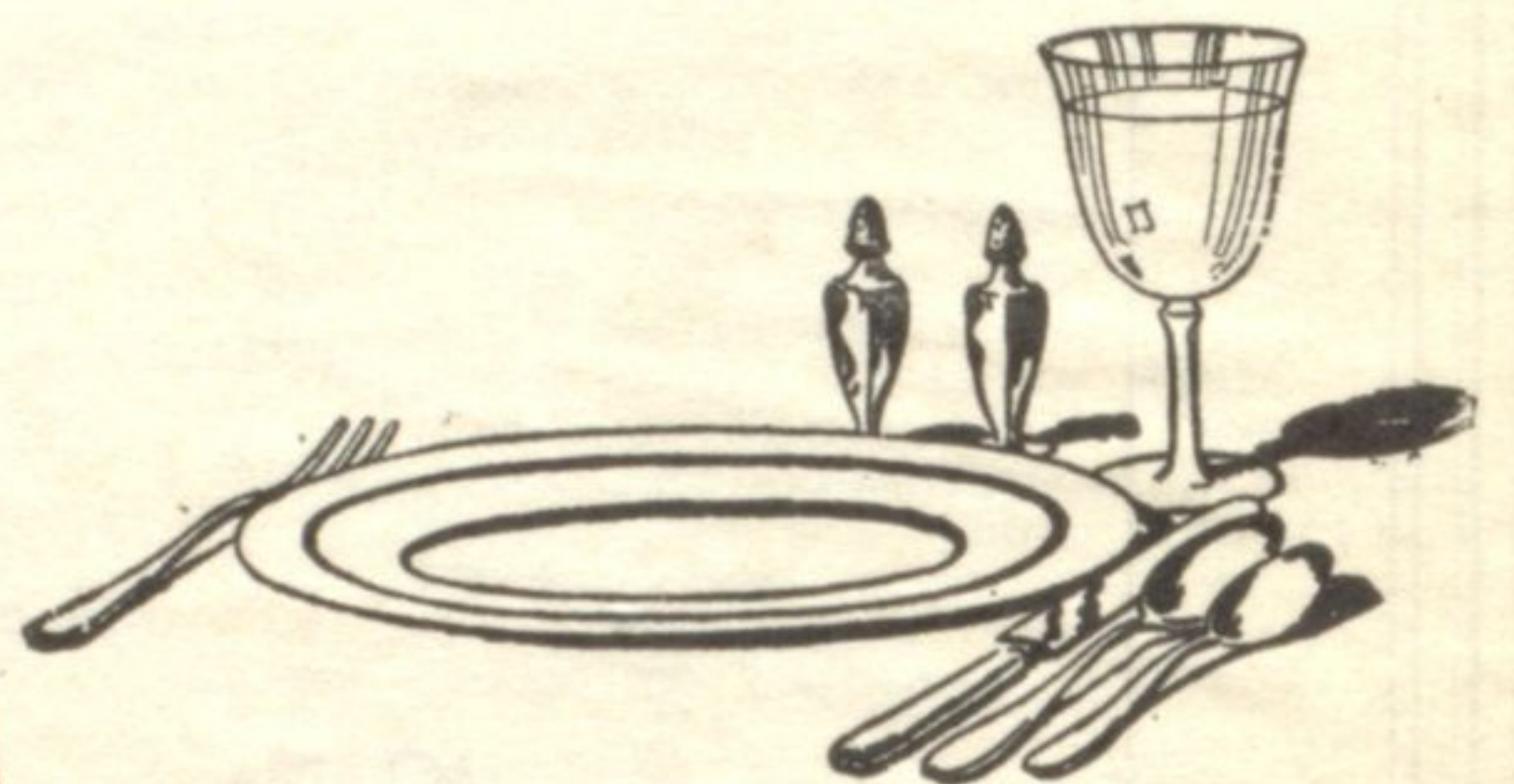
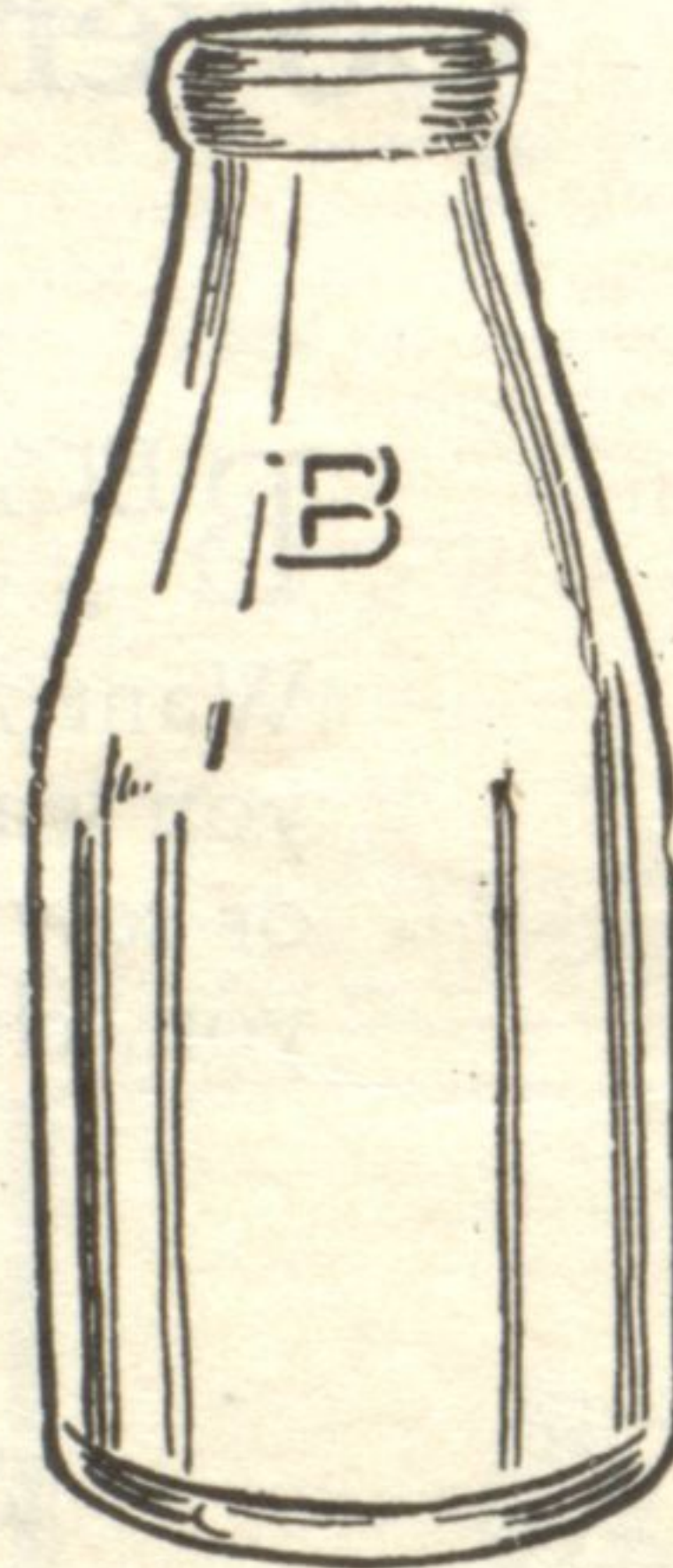
Work has been started on the replacement of an old 300 H. P. boiler by a new 500 H. P. water tube unit with forced draft stoker, having high overload capacity, which will provide adequately for boiler plant requirements for a considerable period in the future. By the installation of this boiler, the plant pressure will be increased to 225 pounds with 100 degrees of super-heat, for which the new turbine has been designed, thus making possible a considerable improvement in operating efficiency.

The ornamental street lighting system on the new through highway, from Cherry street to Willow road was installed by the distribution department, rather than by a private contractor, at a very considerable saving to the village.

Continue Fine Record

During the year the electric department continued the good record of the previous year with reference to freedom from serious service interruptions, and such interruptions as occurred were handled promptly by the distribution and plant departments and service resumed with a minimum of inconvenience to consumers. It is believed that the record of the department, both as to continuity of plant operation and freedom from distribution interruptions, compares very favorably with general public utility practice. Continuous electric service is becoming more and more important with the increased use of electric energy for other purposes than lighting, such as for the operation of house heating appliances and refrigeration equipment.

The department continued during the year to keep a close supervision on vol-



GOOD MILK—rich in cream, fresh and pure

WHEN choosing milk be certain of its quality. Make sure you get the best.

In Bowman Dairy Company Milk you get full-cream richness, freshness and purity. You get the sweet, natural flavor that has made it famous.

Bowman's Milk gives health and energy to young and old. It is a builder of firm muscles and strong bones. Make sure you drink at least a quart a day.

Telephone our nearest distributing station or order from one of our courteous milkmen.

Bowman DAIRY COMPANY Milk!

Phone Glencoe 70

FOR 51 YEARS THE STANDARD OF QUALITY