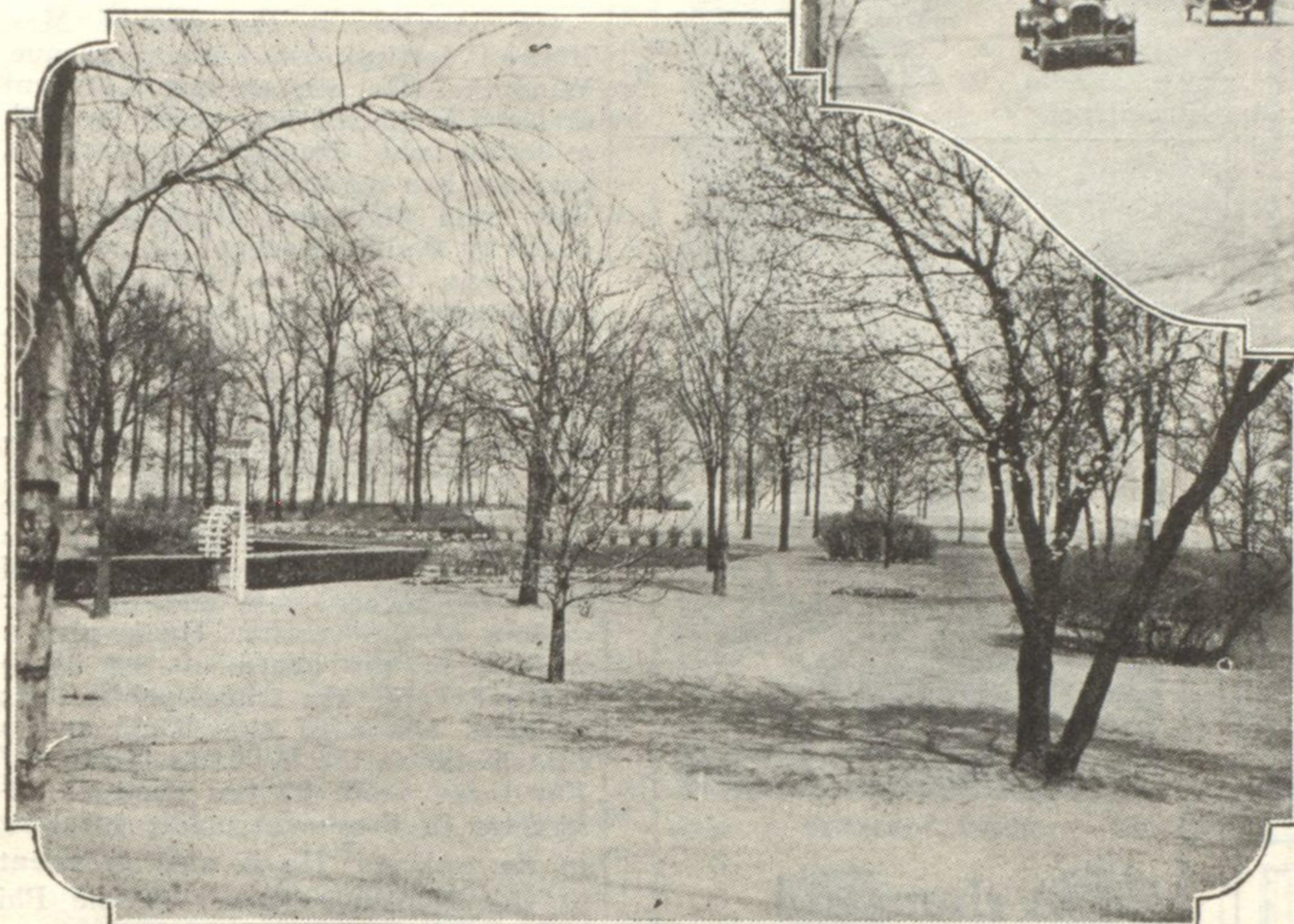
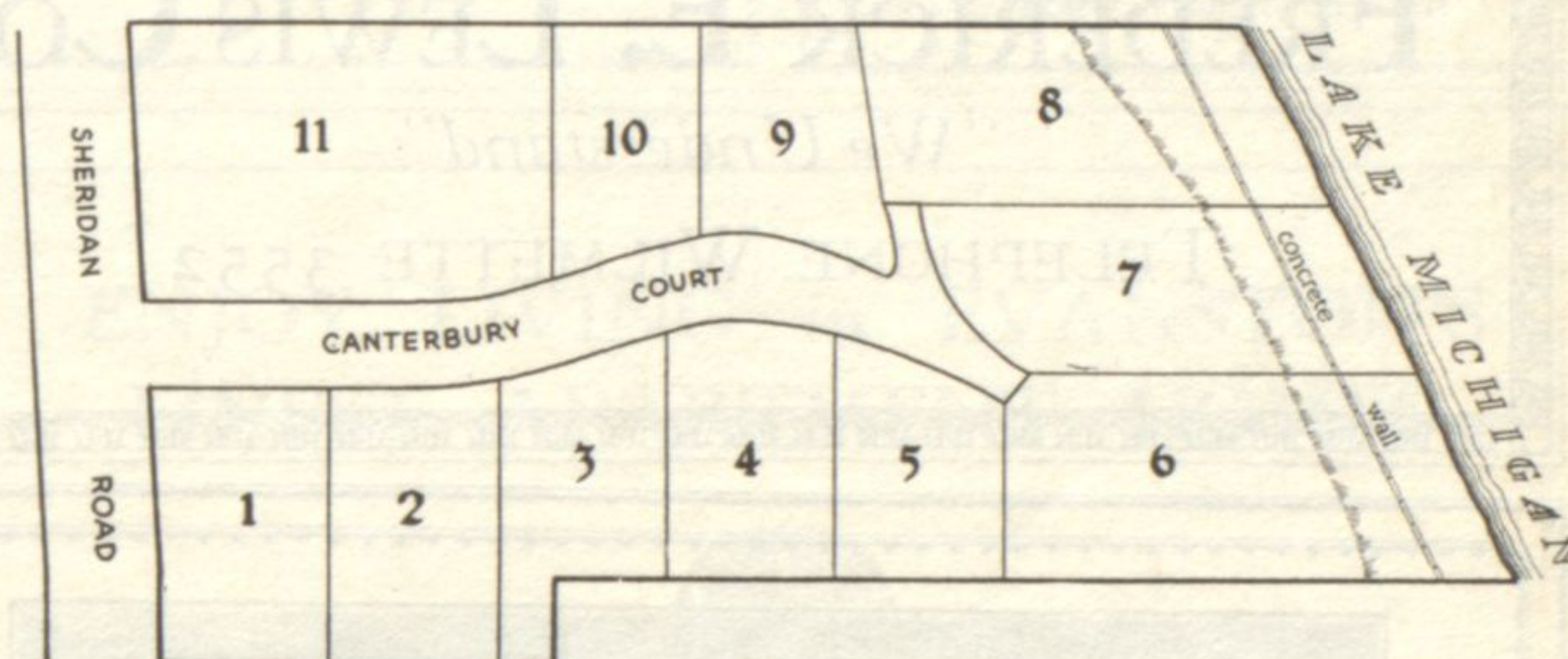


Canterbury Court is a veritable park, with its abundance of trees and shrubbery and its gentle slope of greensward sweeping to the blue waters of the lake.



The approach from Sheridan Road. In the center is the home of Albert E. Cross, which occupies a corner of Canterbury Court.



Canterbury Court

Sheridan Road—Lake Shore Homesites of Distinction

But nine lots are offered for sale in Canterbury Court.

Private driveway will be ornamentally lighted.

Building limits restricted to preserve unobstructed view of lake.

Rapid Transit Service transportation within two blocks.

Beautiful stone and iron Gateway soon to be erected.

Telephone and electric wiring in underground conduits.

THE POSSIBILITY of securing a North Shore homesite situated at the edge of the lake—and in the accessible territory south of Wilmette harbor—has, for a number of years, been considered an opportunity of the past.

But it has remained for the present season to bring to a fortunate few the privilege of selecting a location in the last available Sheridan Road tract with full riparian rights, and commanding a reach of shore line conceded to be unequalled in beauty and attractiveness in its prospect lakeward and landward.

Canterbury Court, developed from the Albert E. Cross estate, midway between Wilmette Harbor and the Evanston light, offers to the seeker of the extraordinary the opportunity to secure a homesite with 100 feet or more of frontage on a private driveway—a town estate overlooking the blue waters of Lake Michigan.

Exclusive Agents

BAIRD & WARNER
INCORPORATED
REAL ESTATE • PROPERTY MANAGEMENT • MORTGAGES

Ralph A. Hunt, Manager

Telephone

528 Davis Street

Greenleaf

1855

Briargate

Evanston