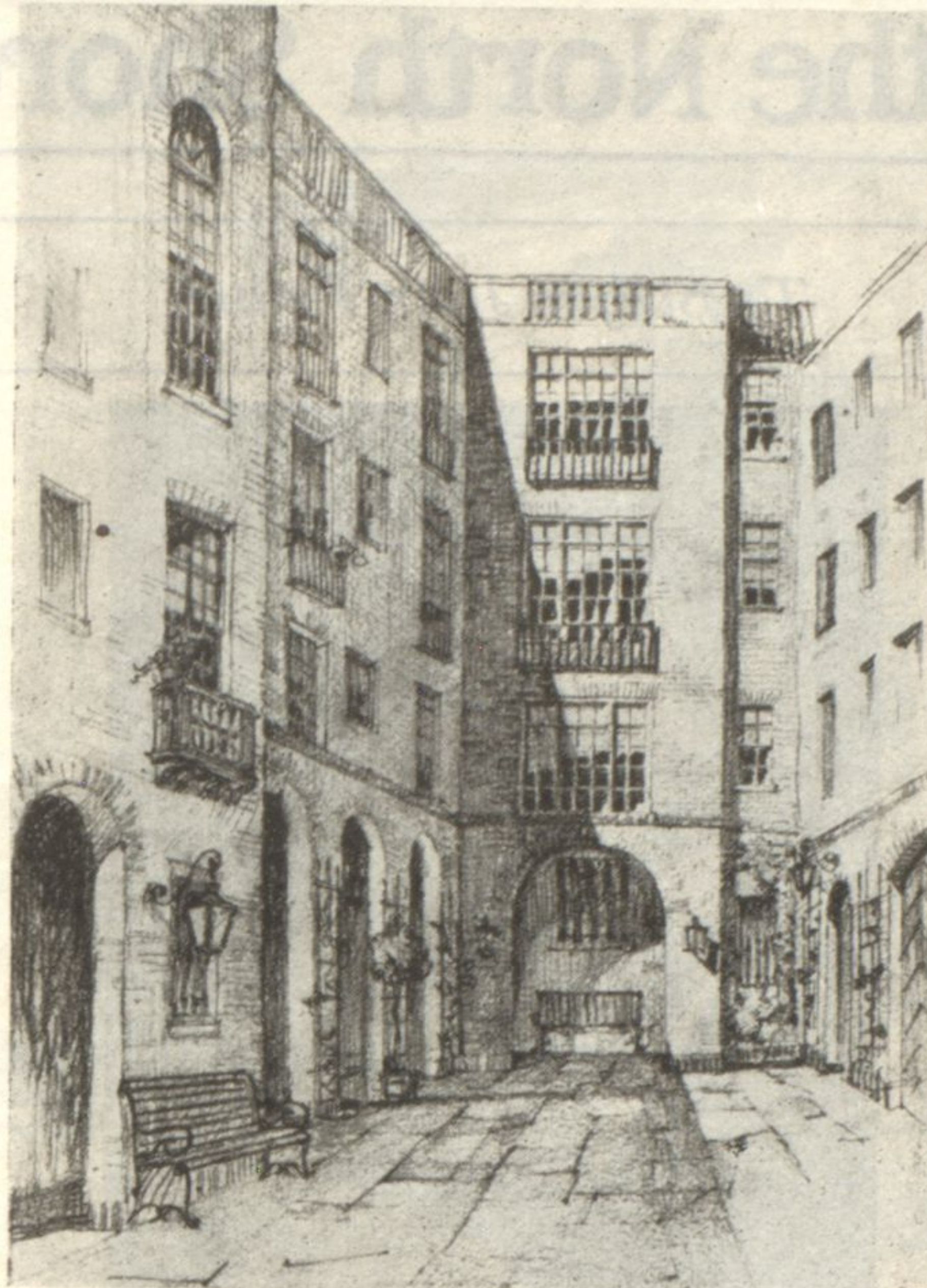
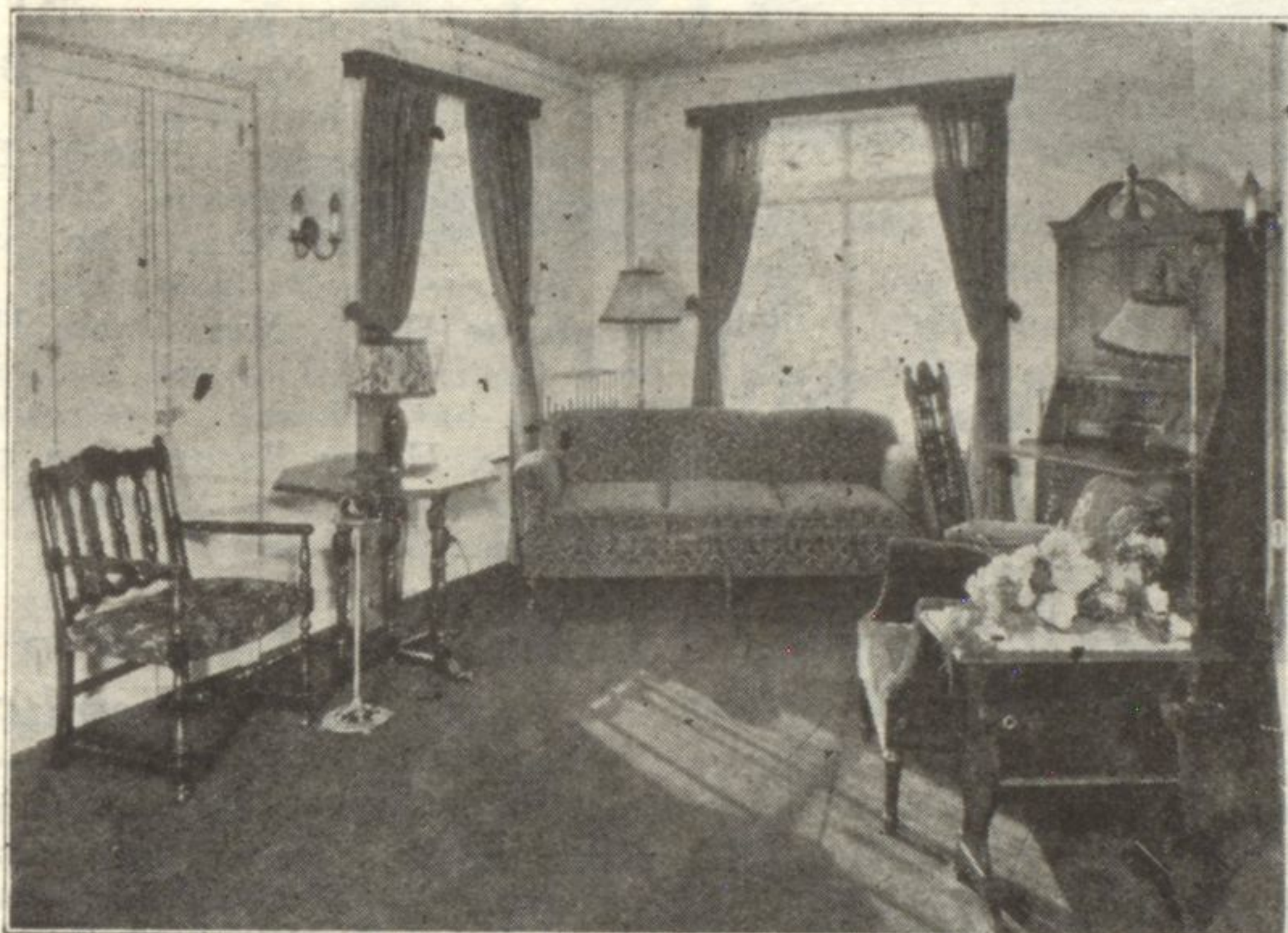


In architectural circles the novel Italian patio of The Elmgate has attracted nation-wide attention. Its mellow, old-world charm is combined with practical features of additional light and ventilation for the apartments.



With its vari-colored flagstone paving, eventual flowers, vine covered trellis, benches and sunshades, the Italian patio is indeed a pleasant retreat, and affords at the same time a pleasant outlook for many of the apartments.

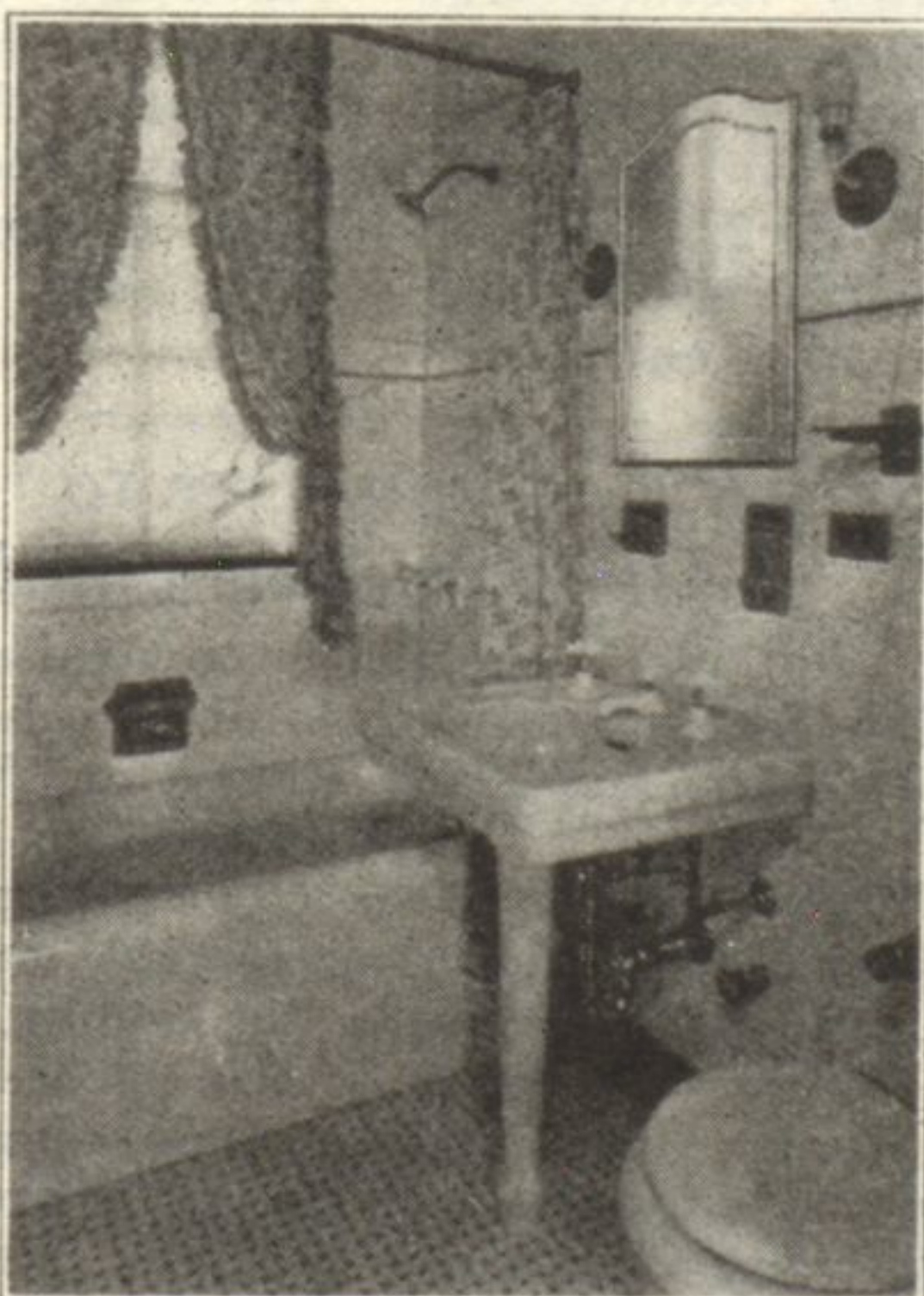
Your Ideal Furnished Apartment - Ready Now at The Elmgate



EASTER SUNDAY, in particular affords a wonderful opportunity to see The Elmgate—to inspect these new and delightfully pleasant 1, 2 and 3 room completely furnished kitchenette apartments that have obtained so much favorable comment.

At The Elmgate you enjoy residential privacy, with the convenience of optional hotel and "maid-service-by-the-hour," giving every advantage of the large apartment hotel yet at rentals that are real economy.

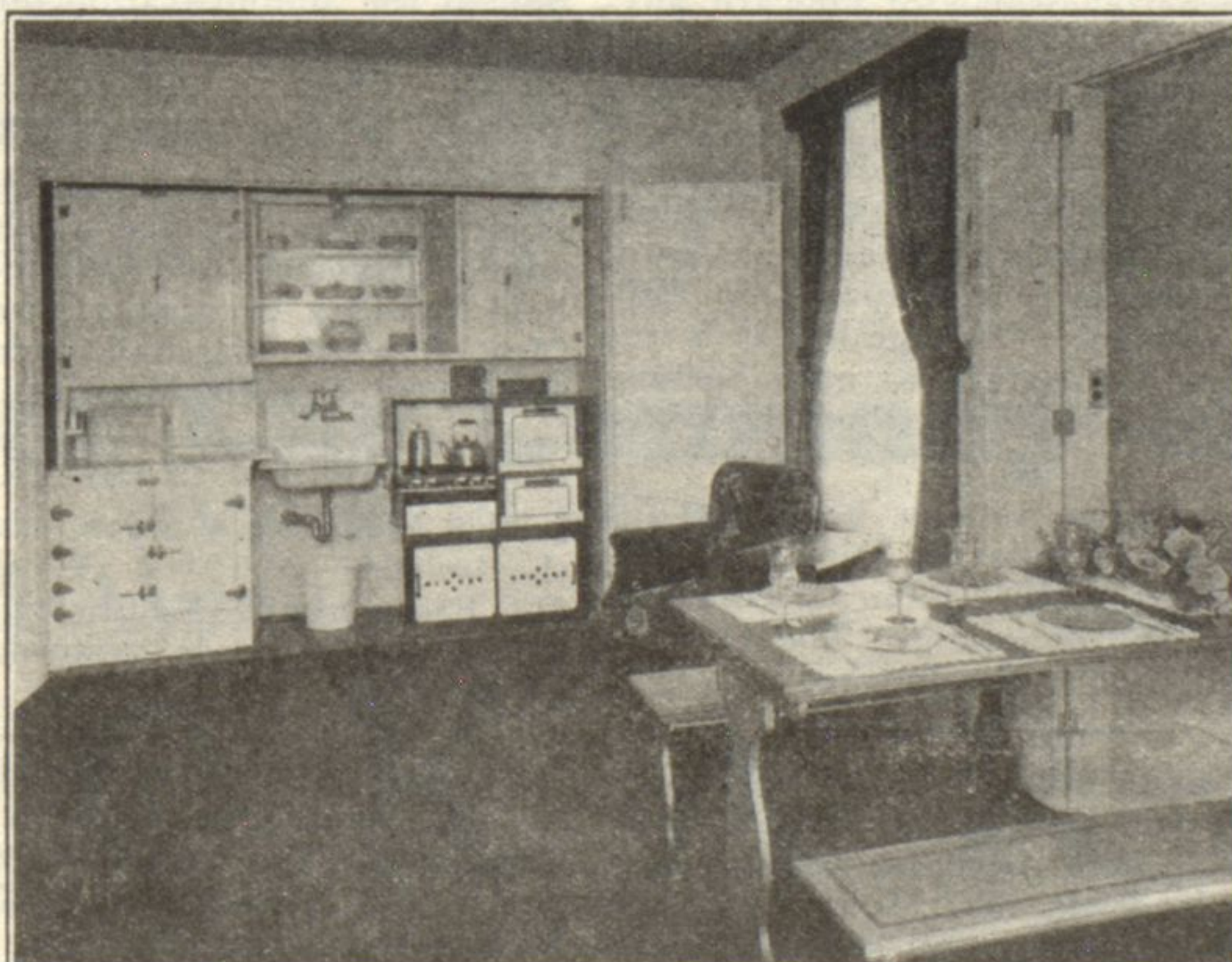
Elmgate living rooms are over twenty feet long and furnished in elegant manner, bespeaking good taste in every detail from carpet to lamps and draperies.



Below you see the efficiency of just a single room at The Elmgate. Complete kitchen facilities, including iceless refrigeration, are provided, while a folding dining table with cozy benches obviates the usual inadequate gate leg table.

Elmgate bathrooms are of glistening tile in white and green. Side lights facilitate shaving. The large venetian mirror entirely conceals the medicine case. Plateglass shelves, showers and finest built-in fixtures.

You may still choose from apartments with complete dining rooms and kitchens, or built-in kitchenettes and Finley dining units.



The ELMGATE

MAIN STREET AT ELMWOOD AVENUE

Evanston

Every unfurnished Elmgate apartment is rented. Only a few furnished units remain. Come and choose a new home now in this ultra-convenient location—just 2 blocks west of Main Street "L" and North Western R. R. stations, close to bathing beaches, parks, schools and shops. Inspection daily 9 A. M. to 9 P. M. or telephone

**GREENLEAF
2100**