

Purple Ball Team to Open Season by Invading Southland

Candidates for positions on Northwestern university's baseball team began to acquire a certain degree of early season fitness this week as Coach Maury Kent began to get them in readiness for their invasion of the southland starting April 8. A squad of seventeen players will make the trip down below the Mason Dixon line for a six game series the first of which will be played on April 9 against Cumberland university at Lebanon, Tenn.

Loss of four regulars from last year's squad through graduation leaves some openings that will be hard to fill. However, a number of determined sophomores are waging a lively battle for these jobs. Capt. Bill Christman at third, Wally Seidel at first, Ellis, catcher and Gohn, outfielder, are the men lost to the squad this year.

Coach Kent has a promising assortment of pitchers for the coming season. In Mills, Palmer and Bryant he has a trio of veterans who saw service last season while Panosh, Heideman

and Hellerman from last year's freshman ranks are showing possibilities.

George Ellis, last year's regular catcher, will be greatly missed. The present crop of back stop candidates include Vanderberg, Carey, Alabran and Foster. None of these boys have shown any startling form in the practice to date.

Infield aspirants are numerous and on a whole quite capable. Led by Captain Ziggy Solheim at second, they include, Luke Johnsos and Prang at short, Griffith and Knight at second, Izard and Smith at third and Mellich and Robertson at first.

A flock of outfielders are putting up a fight for the garden positions. They are Singleton, Kempf, Janetz, Harlow and Rudnich.

HOLD CARD PARTY

The North Shore British American Social club will foster a bunco and card party at the Winnetka Community house Saturday evening. Mrs. John Melrose and Mrs. Alexander McFadzean are Evanston members of the committee in charge.

Illinois coal mines produced 8,096,303 tons of coal during February.

IN "DEUCES WILD"

J. Lincoln Gibson, who appears frequently with the North Shore Theater Guild and other groups of North Shore and Evanston players, was in the cast of "Deuces Wild," produced by the Chicago Dramatic company in Waukegan March 17. Following the performance the play was broadcast from station WIBO, New Bismarck hotel, Chicago.

BAHAI LECTURE SUNDAY

The public of the north shore has been invited to attend a meeting for the elucidation of the principles of the Bahai Movement to be held Sunday afternoon, April 3, at 3 o'clock, in the studio of Louis Bourgeois, architect of the Bahai temple, at 536 Sheridan road.

OPEN CIRCUS TICKET SALE

First sale of tickets for the annual Northwestern university circus will be opened next week according to Karl Franke, general ticket manager of this year's circus. Tickets will be placed on sale at all the Evanston stores. The event of the year, which is but four weeks off, has created a large amount of interest on the north shore. The dates are Friday and Saturday, April 29 and 30.

CARRIE S. ROBERTS

Pianist-Teacher
Private Lessons—Ensemble
Recitals—Coaching
Glenn Dillard Gunn School of Music
Chicago
Tel. Winn. 1226



Out-of-door days
call for colorful stockings

for the children. We have assembled a really remarkable variety of patterns and colors in this season's

Phoenix hosiery
for children and little tots

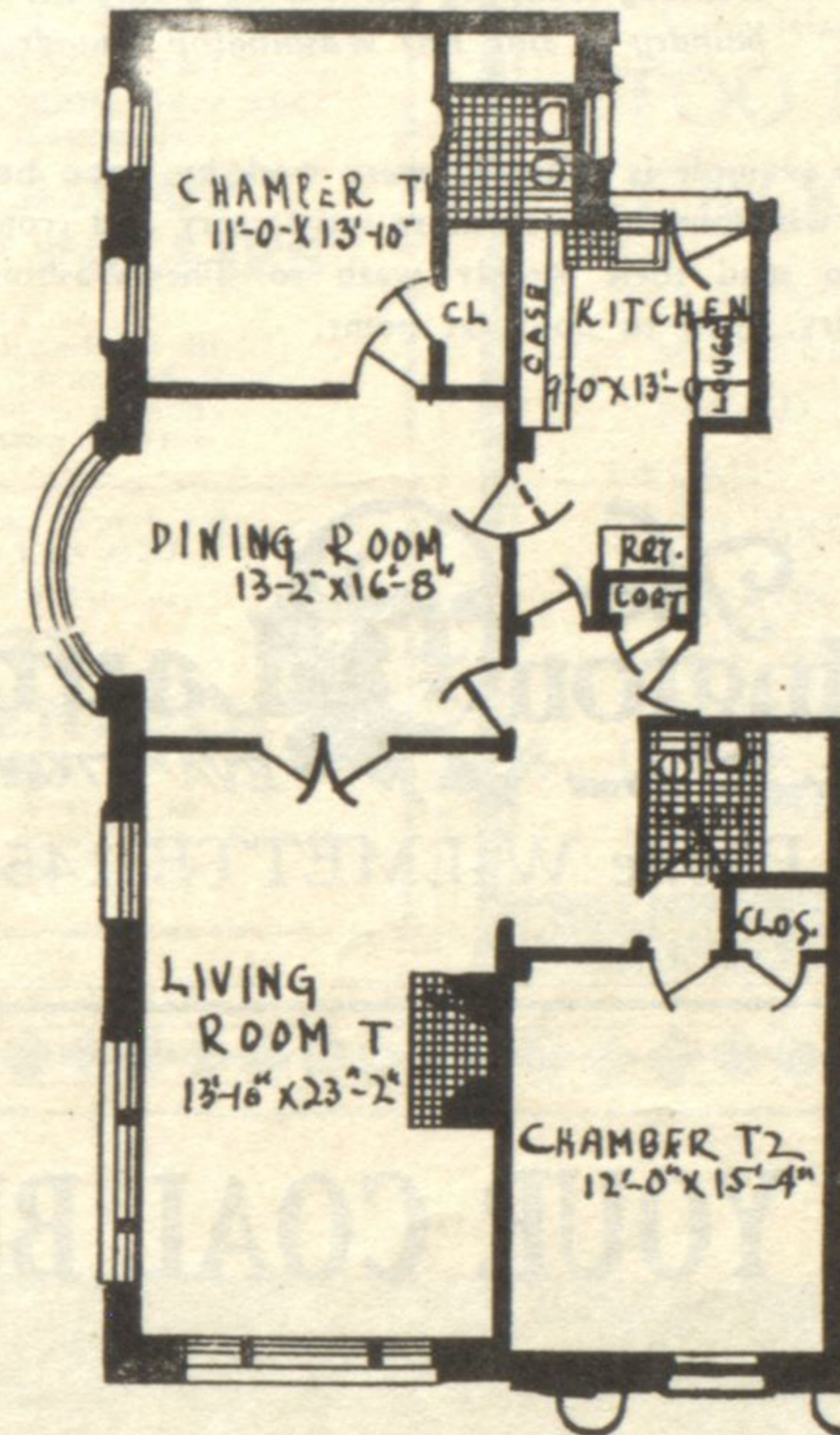
Fashions latest in plain colors and designs—stockings of silk, mercerized cotton, and silk-mixed, with plain and patterned tops. All the lengths: half, three-quarters, seven-eighths, and full. Unquestionably this is the season's choice display of children's hosiery. Prices ranging from

35c to \$1.50

ROSENBERG'S

Davis Street ~ Downtown Evanston

LARGE ROOMS



Floor Plan of Five Room Apt. Home

You will appreciate the large, light, airy rooms that characterize this unusual building, with beautiful one-quarter acre garden court.

3, 4, 5 and 6 rooms

Hourly maid service if desired



SIXTEEN HUNDRED

HINMAN AVENUE

EVANSTON

N. W. CORNER DAVIS STREET

Victor C. Carlson Organization

Phones: Greenleaf 500, Sheldrake 0500

N O W L E A S I N G