

Exceptional Winnetka Buy



This beautiful six-room English brick Colonial; wrought iron fixtures; hot water oil heat; 2-car garage on a wonderfully landscaped lot. The price is \$18,500. Let us show it to you.

HEINSEN REALTY CO.

Exclusive Agents

720 Elm St., Winnetka

Phone Winnetka 254

COMMUNITY HOUSE CALENDAR

(Week of March 21, 1927)

Monday

- Morning—
 - Kindergarten
 - Women's gym class
 - North Shore Sewing guild
- Afternoon—
 - Skokie circle
- Evening—
 - Young Men's gym class
 - Business Men's gym class
 - American Legion
 - English classes
 - Triangle club
 - Boy Builders
 - Glee club
 - Real Estate Lecture
 - Community Players

Tuesday

- Morning—
 - Kindergarten
 - Brush and Pencil club
 - Community Sewing club
 - Lenten Study class
- Afternoon—
 - Motion pictures
- Evening—
 - Young Women's gym class
 - Motion pictures
 - Friendship circle
 - English classes
 - New Trier Rifle club
 - Winnetka Chapter Music guild

Wednesday

- Morning—
 - Kindergarten
 - Brush and Pencil
- Afternoon—
 - Small Boy's gym class

- Evening—
 - Young Men's gym class
 - Czecko Slovakian club
 - North Shore Art league
 - Community Players

Thursday

- Morning—
 - Kindergarten
 - Women's gym class
 - Parliamentary Law class
- Afternoon—
 - High School Boys' gym class
 - Camp Fire Girls
- Evening—
 - Boy Scouts
 - Business Men's gym class
 - North Shore Art league

Friday

- Morning—
 - Kindergarten
- Afternoon—
 - Rotary luncheon
 - Pathfinders
 - Blue Birds
 - Motion pictures
- Evening—
 - Young Men's gym class
 - Motion pictures
 - North Shore Art league

Saturday

- Afternoon—
 - Motion pictures
 - Boy's gym class
- Evening—
 - Motion pictures
 - North Shore British American society

OPENS RADIO SHOP

William Steinhoff, or "Radio Bill," as he is familiarly broadcast by his many friends, has opened an electric shop, on Ridge avenue, Wilmette, to be known as the Ridge Electric and Radio shop. Mr. Steinhoff has been employed at the F. W. Norton gas filling station at Lake and Ridge avenues.

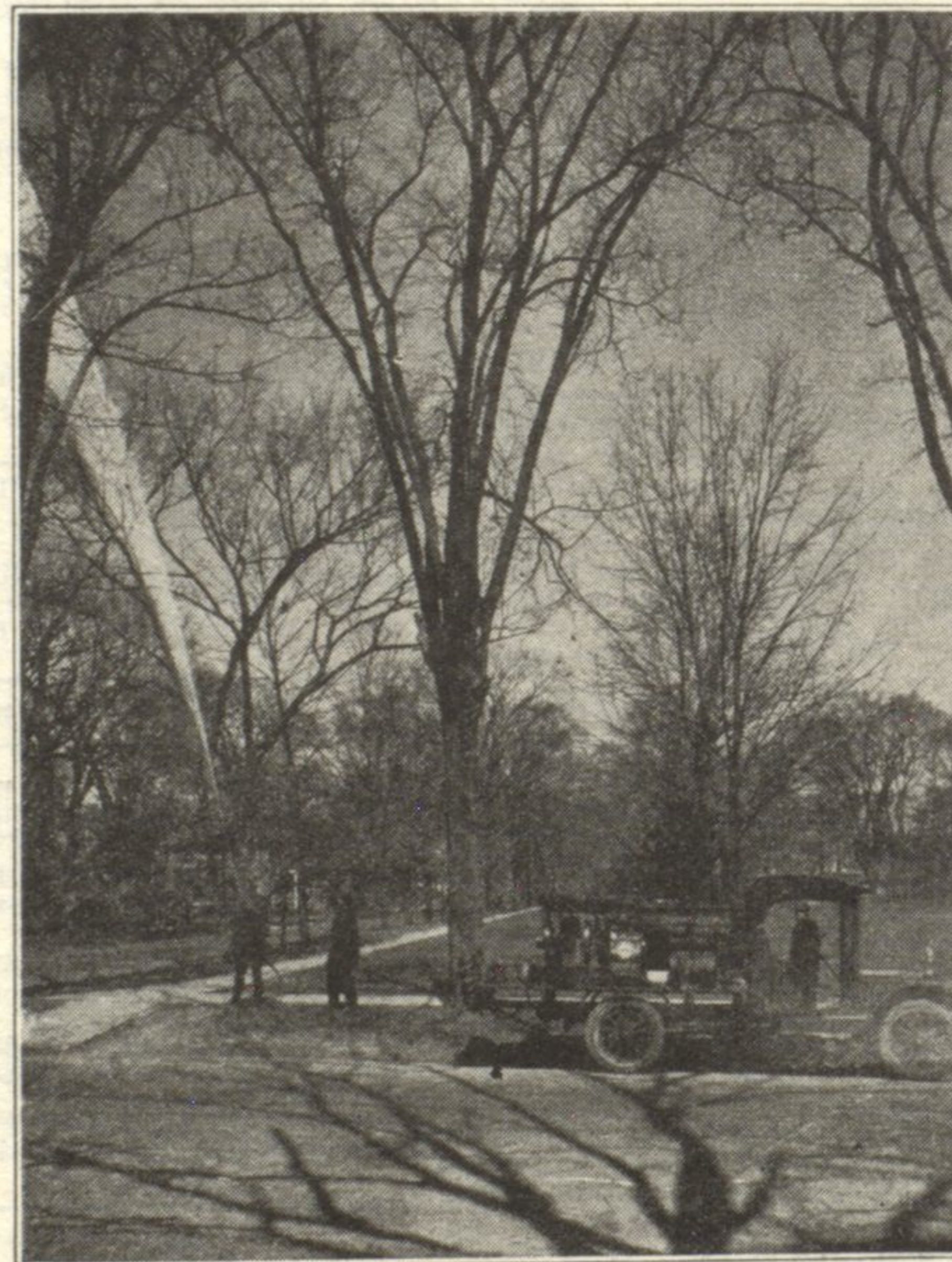
Protect Your Trees

from insect and fungus diseases
by **SPRAYING** your trees Now!

Spraying is essential to the control of insects and fungus diseases, and is a phase of the tree specialists' work that calls for a practical knowledge of the factors involved. There are, for example, two types of insect pests: sucking insects and chewing insects. In combatting each, radically different methods are employed.

Tree pests and infections work downward. Hence no spraying is adequate unless it reaches the topmost branches. Our 2½ h. p. motor sprayer assures the utmost thoroughness in reaching every part of the tree.

You are obligated in no way by requesting an examination of your trees and a professional opinion regarding them. If they need attention—and only then—will you be offered the opportunity of availing yourself of this high type of service, at a consistent price.



Spraying is inadequate unless it reaches every part of the tree. Our 2½ h. p. high-pressure motor sprayer does the work.

THOMAS J. LYNCH

564 Lincoln Avenue
WINNETKA
Telephone 1294

Tree Specialist

1131 Green Bay Road
GLENCOE
Telephone 514