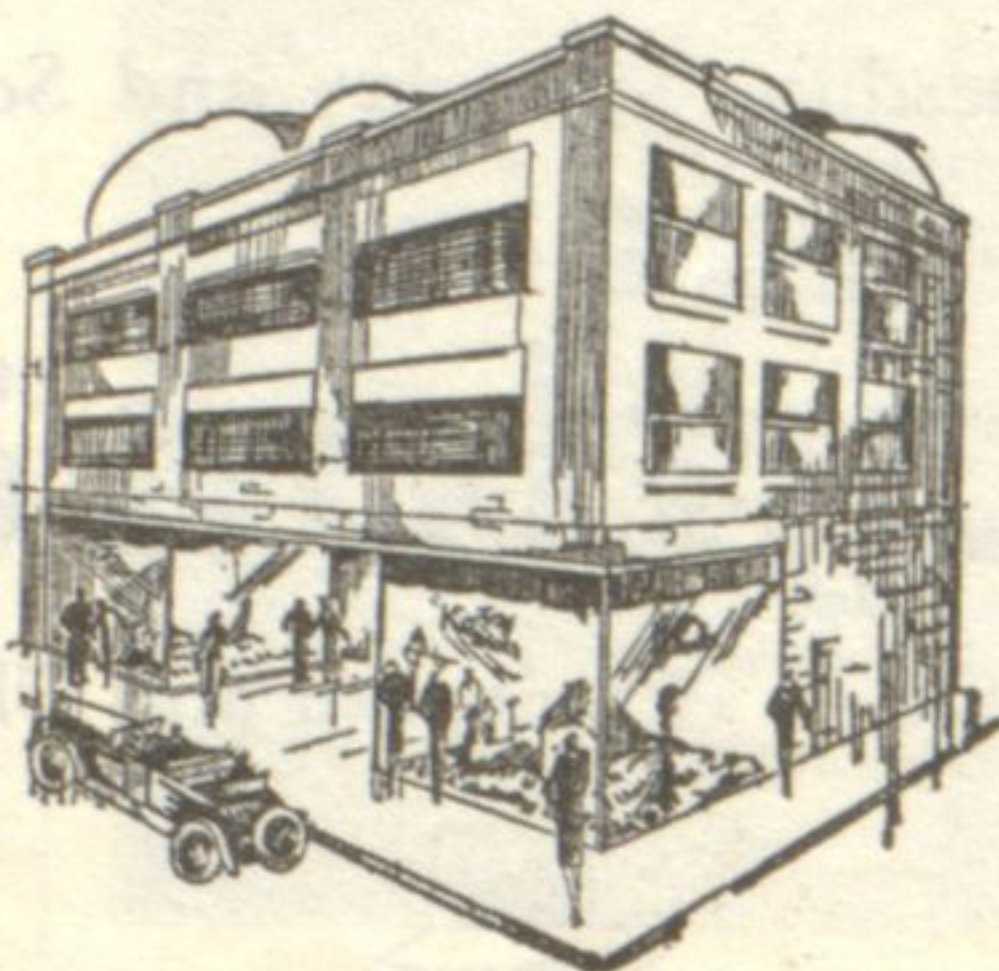


# GRAND OPENING

New Evanston Store  
619 Davis Street

Thursday, March 3rd

# KOTZ SHOES



**FREE!**  
With Every Pair of Shoes Sold. Friday and Saturday at our NEW EVANSTON Store  
A \$1 Quarter-Oz. Bottle of the Famous "Truso" Perfume

It is with the keenest gratification that we announce the Grand Opening of our Beautiful, new Evanston Store Friday and Saturday, March 4th and 5th. Our rapid expansion proves that our policies and merchandise meet with sincerest public approval. We invite you to attend this gala opening.

**SONORA**  
Black Patent Leather Vamps, gray patent quarter. \$6.



**STUDENT**  
Men's Imported Calfskin, black or tan, broad toe. \$6.



**Popular Prices!**

\$5 - \$6  
\$5.50

**COLLEGE**  
Men's Imported Calfskin, pebble toe, black or tan. \$6.



**CO-ED**  
Rose Calfskin with cherry patent trimming. \$6.



## Hosiery Special!

For Opening Day Only—  
at All Stores

Women's Full-Fashioned Chiffon Hosiery, pure silk all the way to the top. The most preferred Spring colors.

**3 Pairs, \$4.25**

**NORTHWESTERN**

**University Students!**  
Co-eds and men, our new Evanston Store, ideally accessible from the campus, carries truly a wonderful array of advance styles designed for college folks. Drop in and see for yourselves.

# KOTZ STORES

106 No. Dearborn Street (For Men)  
52 West Washington Street (For Women)  
462 South State Street (For Men)

1017 East 63rd Street (For Women)  
9201 Commercial Ave (For Men and Women)  
11209 S. Michigan Ave. (Roseland) (For Men and Women)

**619 Davis Street (Evanston)**  
(For Men and Women)

## Kenilworth Quintets to Engage Evanston Teams

The first game of the North Shore Grammar School Basketball league schedule will be played between the three Kenilworth teams and the Boltwood teams of Evanston Saturday afternoon, March 5, at the Kenilworth community gymnasium. The league, which is composed of Wilmette, Evanston and Kenilworth teams, was forced to postpone its schedule because of the Boltwood school fire but is now getting under way again.



# Eitel INC.

## Now Offers You a CHARGE ACCOUNT in C. & N.W. Terminal Restaurants

This new Eitel feature is of particular importance to C. & N.W. Ry. commuters as it makes every minute count in Chicago — gives each member of the family more time to shop or catch a train.

By simply signing the purchase check, charge account patrons may dine in our Lunch Room, Main Dining Room or Suburban Concourse—or take home bakery goods and cigars. Application blanks may be secured at any one of our cashier's desks.



This latest feature of Eitel service also enables you to have

### Checks Cashed

These charge accounts also entitle you to the same service at the new Hotel Eitel, which is under the same management. And we will be glad to make reservations for you at the C. & N. W. Station.



## Rental Library to Be Extended to Broader Area

Plans are in progress for an ambitious extension of the Ballard Book shop rental library which will bring this increasingly popular exchange to every village of the north shore, as well as to Evanston and Chicago.

Phenomenal development of the library department of the Book shop has prompted the owners to close out the retail stock of books, stationery and gifts in the Wilmette store, in order that all the time may be given to the library feature.

Wilmette is to be the headquarters for all the branches of the rental library and the service is to be materially enlarged, it is explained.

## First Scandinavian Evangelical

886 Elm Street, Winnetka.  
Pastor, A. E. Rohrbach  
943 Spruce street. Telephone 2791

### Hours of Worship

Sunday services:  
Sunday school ..... 9:30 a. m.  
Bible class ..... 9:30 a. m.  
Swedish services ..... 11 a. m.  
Young People's service ..... 5 p. m.  
English services ..... 7:45 p. m.  
Subject: "With Jesus in the Storm."  
Celebration of Lord's Supper.

Wednesday:  
Swedish service conducted by W. Eric Nelson and Mrs. Samuelson... 8 p. m.  
The pastor will preach at the joint Lenten services at the Congregational church, 8 p. m.

Saturday:  
Confirmation class ..... 10 a. m.

"Truth wears well. Time tests it, but it right well endures the trial. If then, I have spoken the truth and have for the present to suffer for it, I cannot be content to wait. If, also, I believe the truth of God, and endeavor to declare it, I may meet with much opposition, but I need not fear, for ultimately the truth must prevail. O, my heart, take care that thou be in all things on the side of truth; but especially, on the side of Him by whom grace and truth came among men!"

## Neighborhood House Bridge Large Affair

The benefit bridge party on Monday afternoon, February 28, at the Georgian hotel, by the Woman's Auxiliary society of Onward Neighborhood House, Chicago, not only added materially to the support of Onward Neighborhood House, but gave north shore society women a most enjoyable afternoon.

Tables were attractively arranged in the Louis XVI room, the lobby, and the men's lounge. After a few hours spent in playing cards and chatting pleasantly, the six hundred women attending the party were taken to the prettily decorated ballroom and served delicious buffet refreshments.

Arrangements for the party were made by the chairman, Mrs. John H. Buechler of Glencoe, who was assisted by a capable committee of north shore women.

## Motor and Dog Taxes Due, Says Chief Pete

Very few cars are to be seen now on which the shiny new license plates are not attached. Occasionally there is one, however, and W. M. Peterson, Winnetka's chief of police gives warning that those who have not already procured the 1927 state license and local vehicle tax plates are asked to do so without delay. Annual dog taxes are also due and payable.

Mrs. R. E. Snider, 836 Foxdale avenue, returned to her home Saturday, February 26, after undergoing treatment at the Presbyterian hospital.