

Charge Purchases Made Monday, Feb. 28, Will Be Entered on March Statements, Payable April 1st.

ROSENBERG'S

Davis Street ~ Downtown Evanston

IN HER SPRING WARDROBE

The wardrobe that will carry the always fashion-right woman through this year's Spring season with style and becomingness, will include a costume for every Springtime indulgence. Such costumes will be found here most easily, most admirably.



An Ensemble

The Ensemble met with such great favor by fashionable women when it was first introduced, that it has been a fashion leader ever since. An ensemble of navy blue canton crepe with blouse of white with lay-down collar and turn-back cuffs, \$25.

The Compose

Navy blue combines with Queen Marie Blue in a costume with blouse featuring tiny shoulder tucks and turn-back cuffs with pleats that will not come out. These are matched in the skirt with two tiers of pleats. Fancy ornaments finish the belt, \$25.

A Sports Coat

The qualifications that allow a Sports Coat to enter this Spring's wardrobe are slim lines, and striking color combinations. Such a coat is of imported novelty fabric in black-and-white, has the new calf-skin collar and large patch pockets, \$79.50.

A Sports Dress

Fashion emphasizes the sports theme and a dress in jersey smartly follows Fashion. The compose effect is carried out in color—Water lily combining with Jungle green, \$25.00.

For The New Silhouette

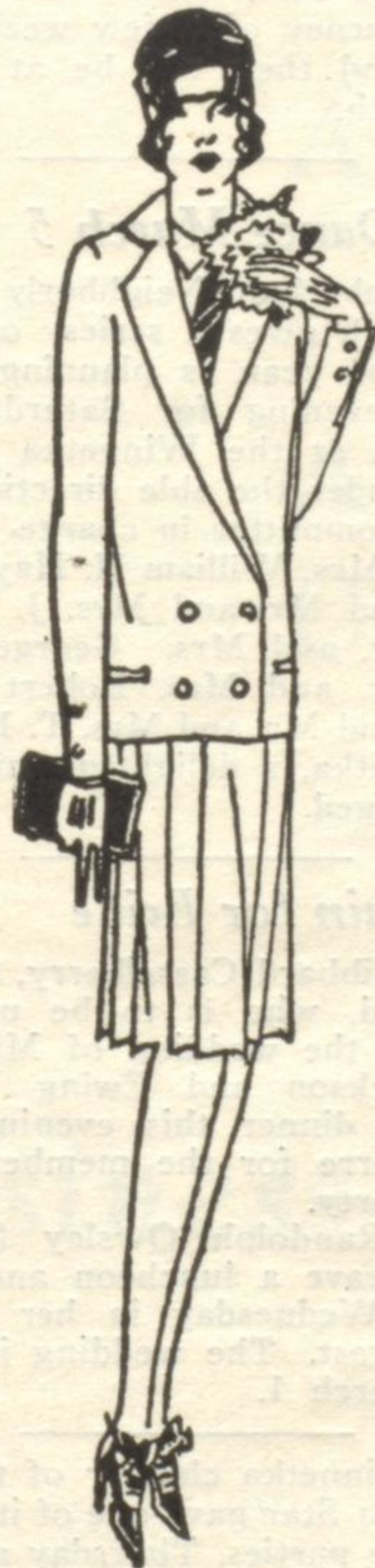
A new girdle brings new beauty into foundation garments. It is made of Nile green combined in changeable effect with pink, and features beautiful brocades, \$5.00. With matching brassiere, \$6.50.

Junior Fashions

ESPECIALLY smart is a girl's coat of novelty fabric with trimmings in natural kasha, priced at \$15.00.

A GIRL'S FROCK of crepe de chine in three color combination of turquoise, Queen Marie blue and Sistine blue makes a very youthful entrance into Spring fashions, \$10.95.

Second Floor



Important: Charge purchases made Monday, February 28th will be entered on March statements payable April 1st.