

**Schools to Send
Valentine Gifts
to the Near East**

For the fourth consecutive year, north shore school children are to join with other schools throughout Illinois and the United States in a renewal of a pretty sentiment, an international observance of St. Valentine's Day.

Instead of the exchange of lacy gee-gaws with expressions of love, they will make this February 14 a date for a more substantial demonstration of their affection toward their less fortunate brothers and sisters of their own age in the orphanages in the Bible Lands and in the refugee camps of Greece.

As in the past three years, pupils in the public schools of Illinois will send greetings abroad in the shape of seventeen pennies each, or more, to be donated toward the support of the fatherless and motherless little ones of the Near East. The seventeen cents is sufficient to feed, clothe and educate one of these little wards of America for a day and hundreds of children in the United States will forego their trip to the movies next week to save that amount to be sent overseas.

Committees have been formed in every county in the state and principals and teachers are co-operating with the state committee of the Near East Relief of which former Gov. Lowden is chairman, in the collection of the Valentine fund.

Recent dispatches from the near east indicate that St. Valentine's Day would be a cheerless occasion without this remembrance from America. There are 36,000 orphaned children in the charge of Near East Relief, solely dependent upon the philanthropy of Americans.

Massacres, earthquakes and disease have rendered these children homeless and helpless and now they are looking forward to a new message of cheer from this country which has been keeping them for the past eight years.

**Flu This Season Not
of the Type in 1918**

In spite of reports that suggest the contrary, there is no evidence that virulent, deadly influenza of the 1918 character is epidemic in Europe and such an infection is certainly not prevalent in Illinois nor the United States, according to Dr. Isaac D. Rawlings, state health director. The respiratory disease now epidemic in European countries is of the influenza type but it is mild in character, causing death principally in the aged, whereas the 1918 pandemic showed a predilection to the young adults and those in the prime of life. This is the usual season for respiratory infections, many of which are called "flu" and the public will benefit by taking every precaution against them but there appears to be no sign upon the horizon that justifies apprehension concerning an approaching experience of the serious and fatal proportions that existed in 1918.

**Merit Badge Exposition
Proves Splendid Success**

The Boy Scout troops of the North Shore area participated in the Merit Badge exposition, held last week at the First Regimental armory in Chicago. The journalism booth, which published the X-Po news, was in charge of Troop 1 of Highland Park, under the leadership of Scoutmaster Robert Anspach. John Snite was editor-in-chief. Randall Roberts assistant editor, and Milton Beers chief reporter.

Mrs. E. A. Meyers of 812 Foxdale avenue, together with her three children, is spending the winter months in Miami, Fla.

**ANNOUNCING
RIDGE AVENUE
SHOW ROOM**

IN order better to serve this section of the city, we have opened a beautiful new Pierce-Arrow Showroom and service station at 1819 Ridge Avenue. Here will be displayed various models in both the *Series 80* and the *Series 36*.

These superb hand-made custom-built cars will give you a new idea of automotive comfort and luxury. No finer cars can be built, here or abroad.

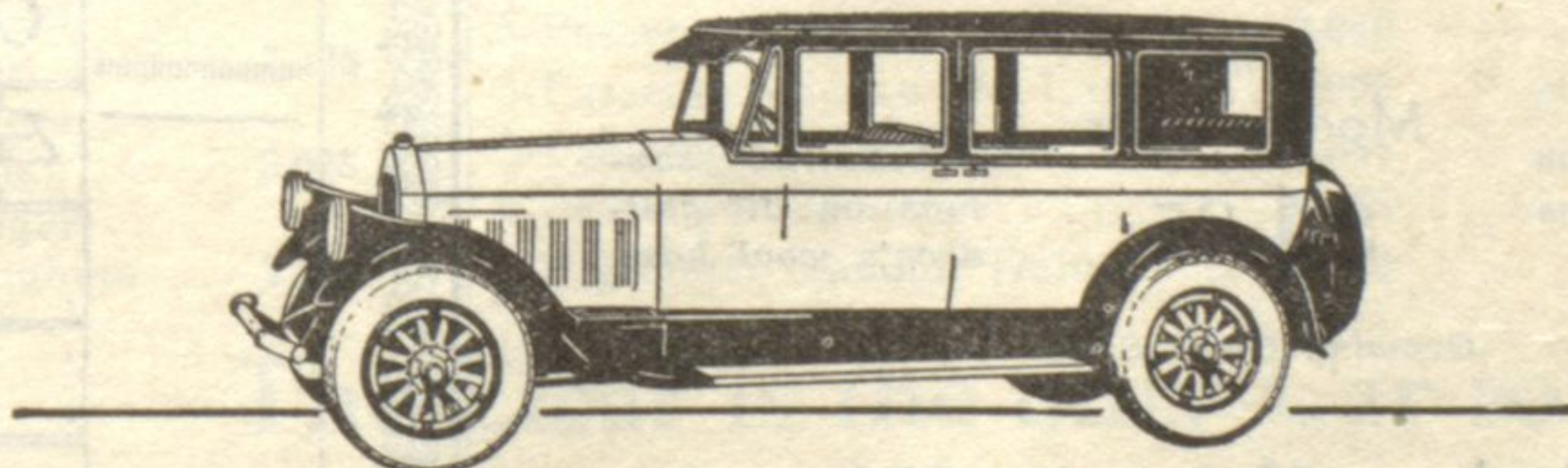
See our display. Competent and courteous salesmen will gladly explain every feature to you. Drive one of these cars yourself, if you wish.

Hand-building does not make the Pierce-Arrow a high-priced car. The *SERIES 80* two-door coach at \$2995 is an example. Easily maneuvered 130-inch wheelbase. Operating economy usually equaling and often surpassing that of cars costing less. Pierce-Arrow nitro-cellulose lacquer finish in twenty-six charming color choices without extra assessment. Balloon tires, four-wheel brakes and Houdaille double-acting shock absorbers standard equipment.

Prices **\$2895** and up, plus tax and transportation

IN ANY DESIRED COLOR OR UPHOLSTERY
New *SERIES 36* Dual-Valve Six—138-inch wheelbase
—enclosed cars, \$5875 and up. B. K. Booster unit,
improving ease of braking, is standard equipment

**PIERCE
ARROW**



TOM HAY AND SON
1819 Ridge Ave. Telephone Greenleaf 50
EVANSTON, ILL.