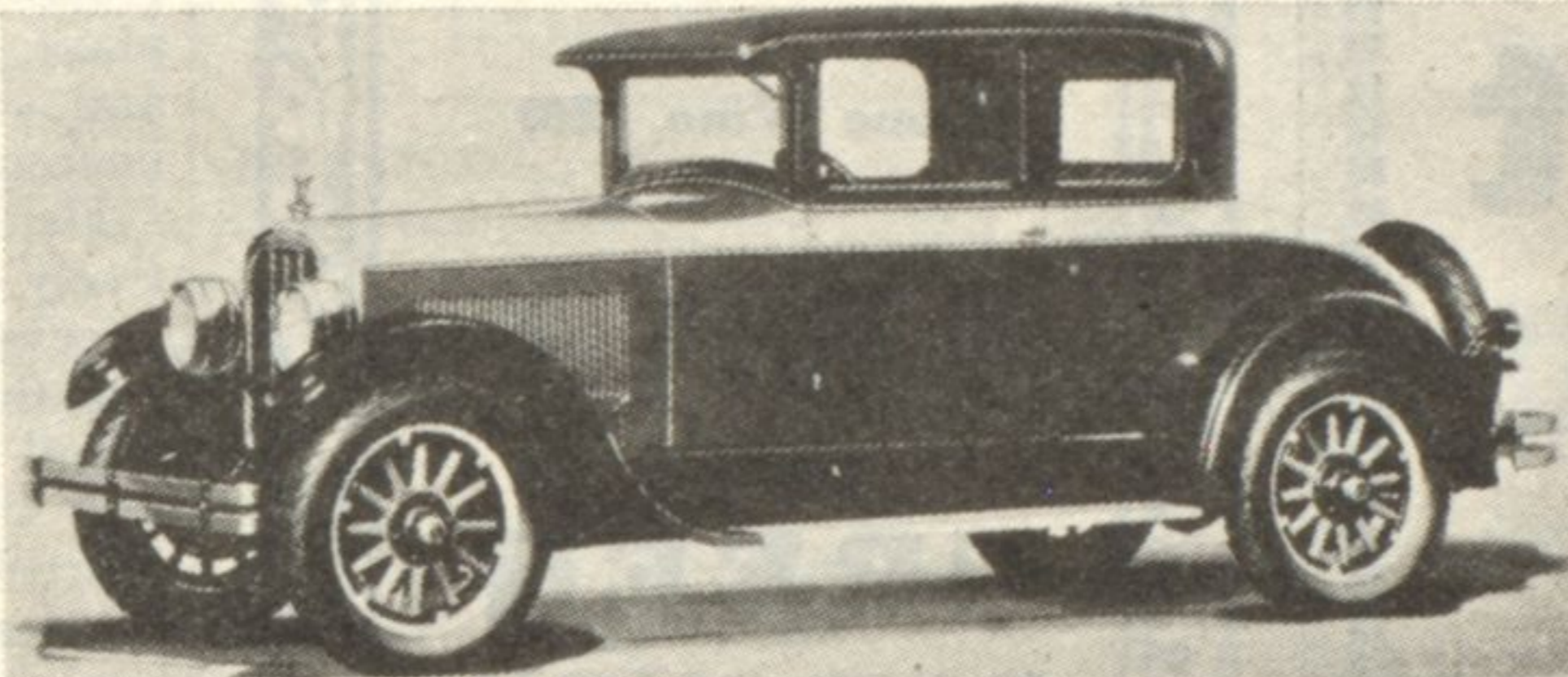
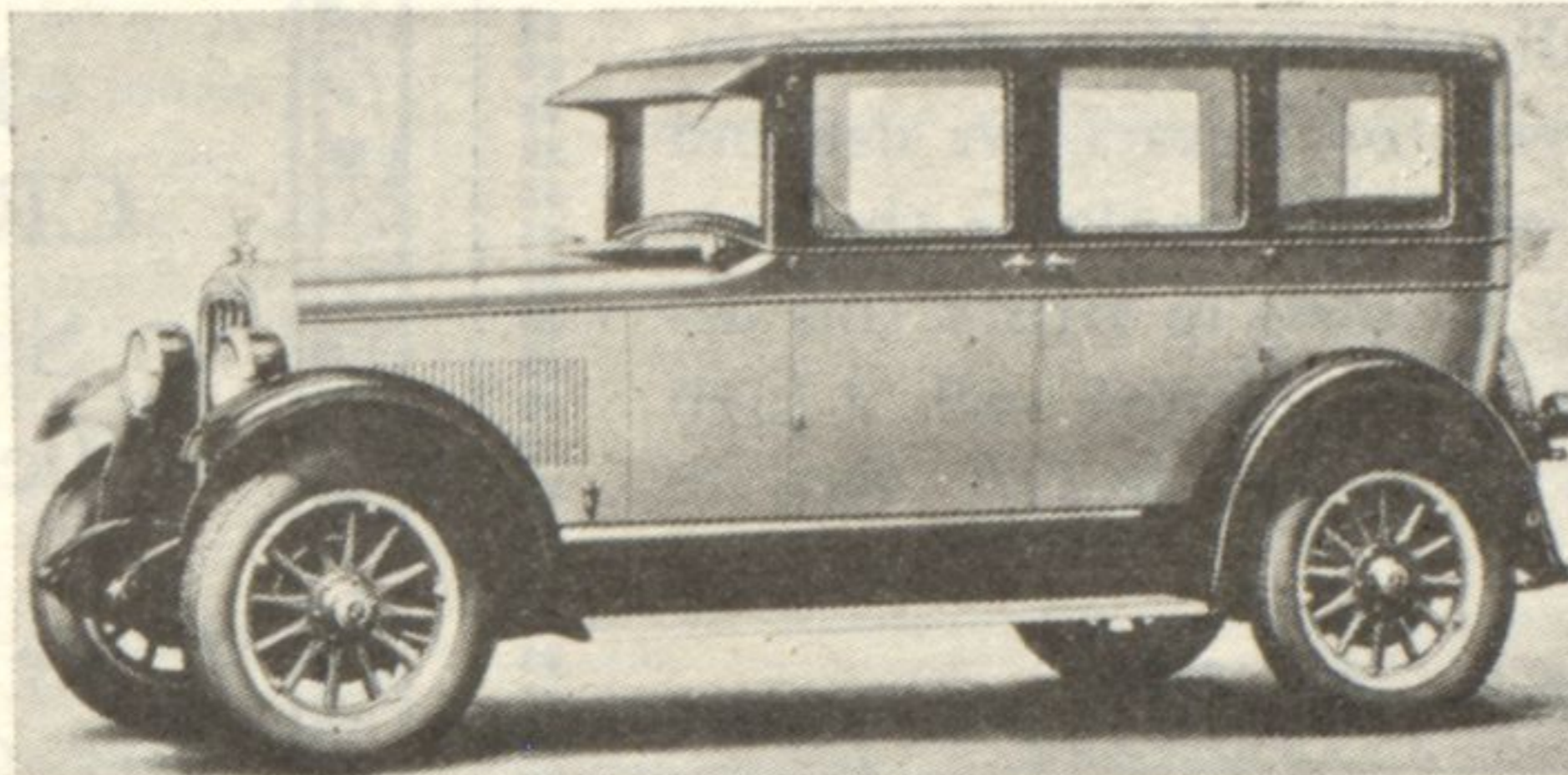
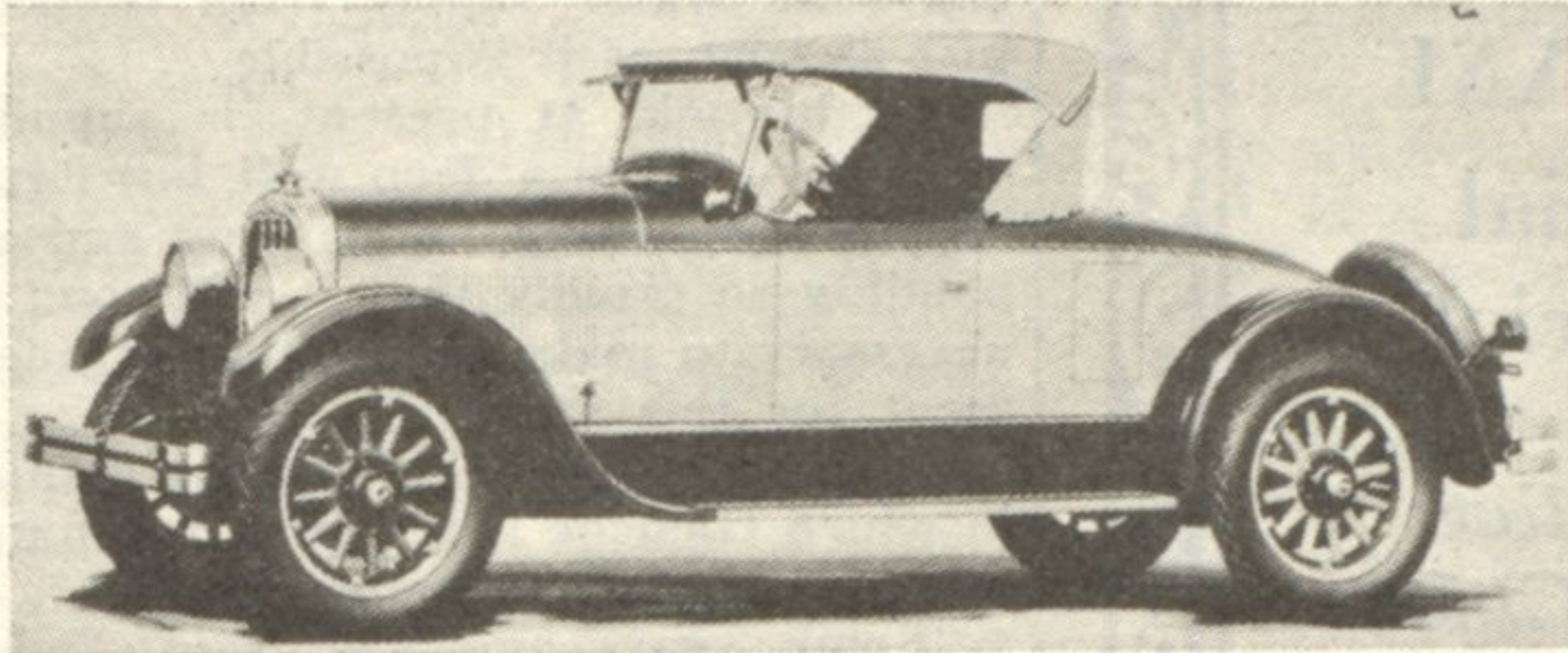
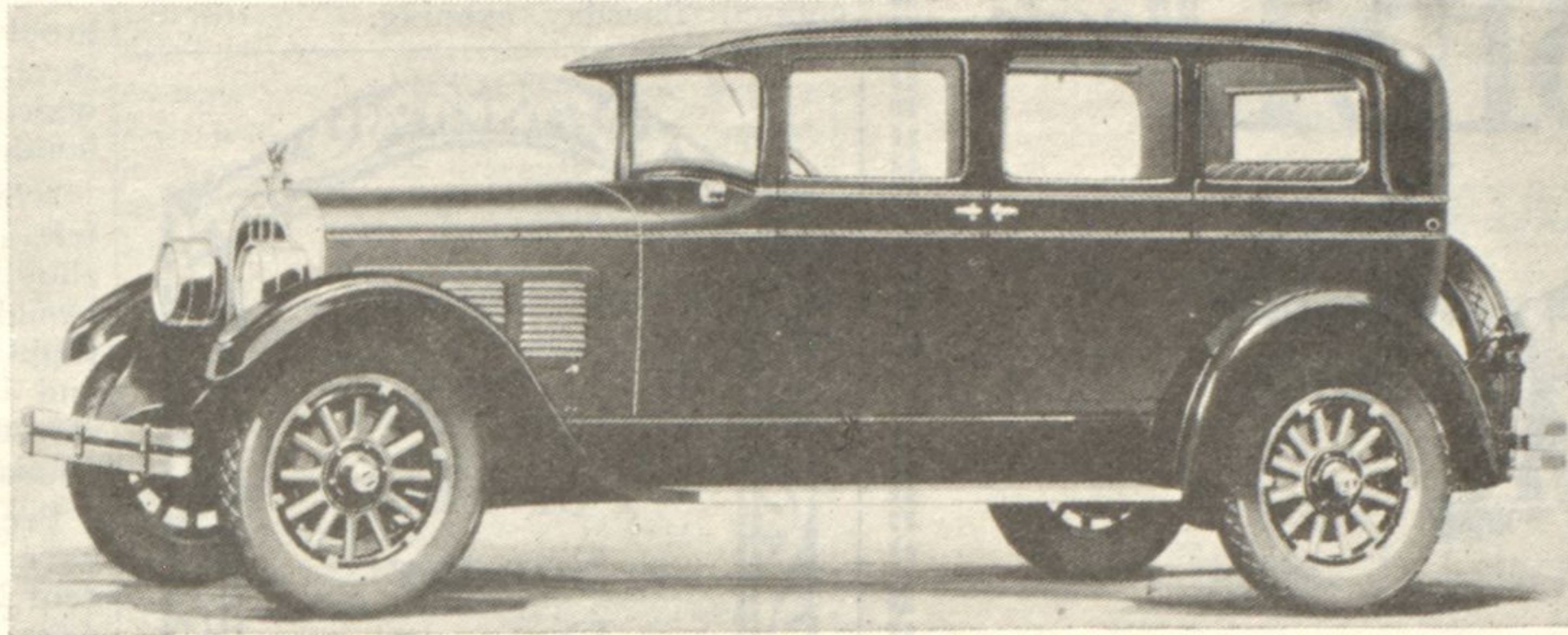
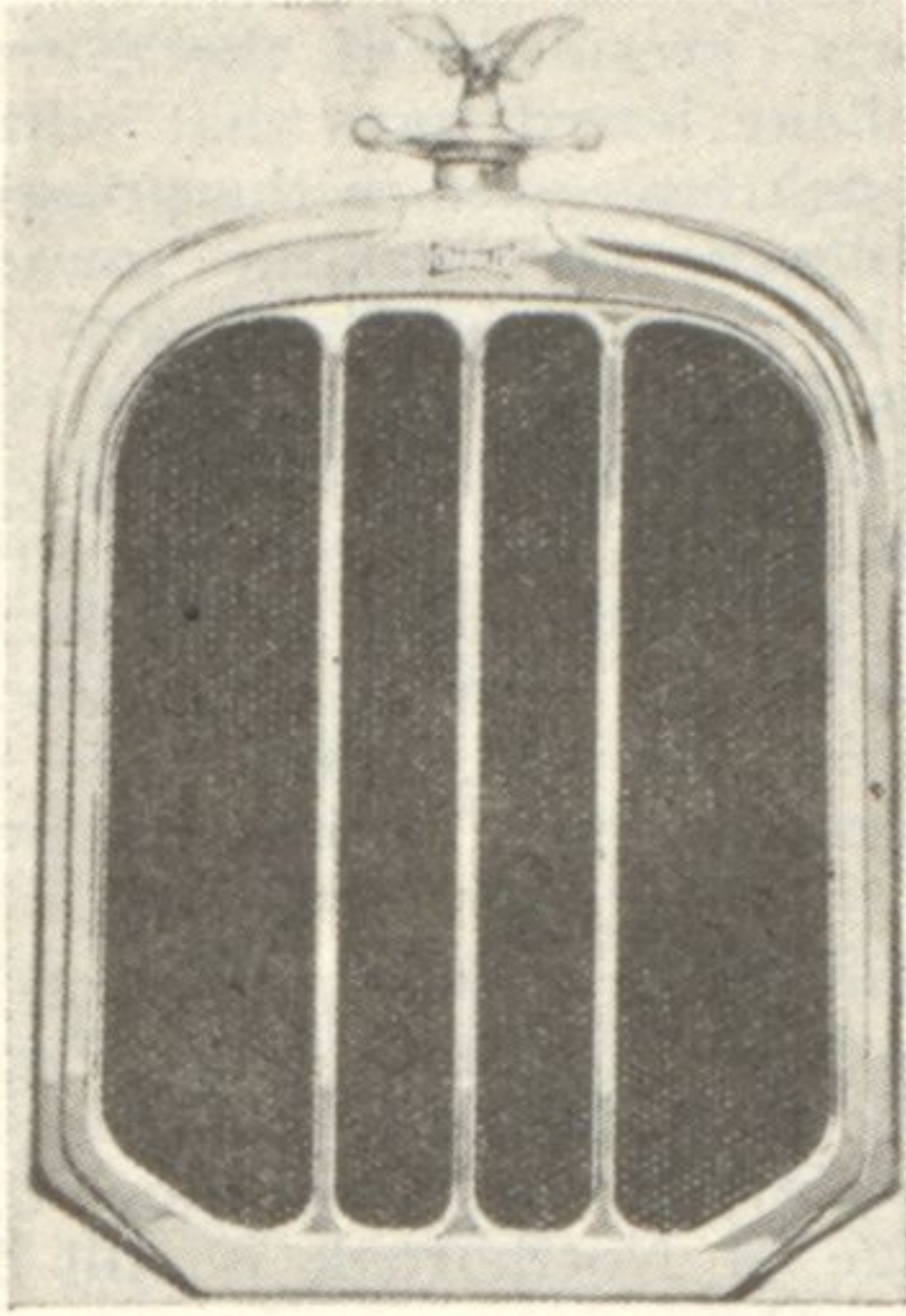


### New Models Feature Chandler's 1927 Automobile



Here's a view of the 1927 Chandler radiator with Eagle emblem and a few feature cars in Chandler's new 1927 line which comprises twenty-four distinctive models on four separate chassis styles—the Royal Eight, the Big Six, Special Six and Standard Six series.

At the upper right, the new Royal Straight Eight 5-passenger Sedan. Directly be-

low, the Big Six Comrade Roadster and the Special Six Sedan for five. At the bottom, the Big Six 4-passenger Coupe.

Mechanical features on all models include the Chandler "One Shot" system of automatic chassis lubrication, which permits the owner thoroughly to lubricate every moving chassis part by merely depressing plunger.

general sales manager of the Chandler-Cleveland Motors corporation.

The four straight Eight models, and several new body styles in the Big Six, Special Six and Standard Six series are making their debut at the show this year.

In the entire Chandler line comprising 24 distinct models, there are nine full-sized sedans, six coupes of two and four passenger capacity, three roadsters and six touring models, all priced to appeal to the four great motor car markets above the low priced four class.

In addition to the introduction of the new Straight Eight and extensive mechanical improvements on the three six-cylinder lines, many novel body refinements have been made in Chandler's new 1927 models.

The six-cylinder closed models have been lowered materially and made more graceful to the eye by sweeping steamlines, neatly striped body moulding and bead effects, and by flowing curves on the upper back deck structure and windows.

All models, including the Eight, carry the refined and distinctive tri-paneled full-nickled radiator design patterned after the newest trend of custom builders. The closed cars have the full vision and complete ventilation advantages of the perfected Chandler clear-vision windshield, quickly and easily adjustable to suit the driver's convenience.

Strikingly attractive duotone lacquer color combinations are available. Upholstery materials range from hand-buffed leather in the roadsters and touring cars to broadcloth and mohair in the closed models.

Mr. and Mrs. Jacob Replogle of Oak street were hosts to their dinner bridge club on Saturday, January 29 at 7 o'clock.

#### Chandler Co. Adds Straight 8 Model to Its 1927 Line

Chandler's presentation at the Automobile show this year includes the

new Royal Straight Eight model with four distinct body styles, and three six-cylinder chassis styles, the Big Six, Special Six and Standard Six series, with 20 separate body types, announces Sid Black, vice president and

Slate and Tile Roofing  
Sheet Metal Work  
Slate Walks and Terraces  
Interior or Exterior  
**WILLIAM L. WENTE**

Sheet Metal Contractor  
Phone Winn. 225 874 Center St., Hubbard Woods

### Dr. W. L. Schmidt, Chiroprapist of Evanston

will hold office hours in Hubbard Woods every Wednesday afternoon beginning

Wednesday, February 9th  
at the

**Hubbard Woods Beauty Shoppe**  
1081 Gage St.  
For Appointment Phone Winn. 857



The Red Roof in No-Man's Land  
Just South of "The Cottage"

Will Your  
RADIATOR  
FREEZE  
with the  
Next Drop  
in  
TEMPERATURE?

We are experts in protecting radiators from freezing. With our accurate hydrometer we can in just a minute determine what temperature the solution will stand. So let us test your solution regularly and you will have no cause to worry when the temperature drops.

SKID CHAINS REPAIRED

### Stephen Shimonek, Jr.

Gasoline Oils



1428 Sheridan Road

Phone Wil. 3379

Distributor