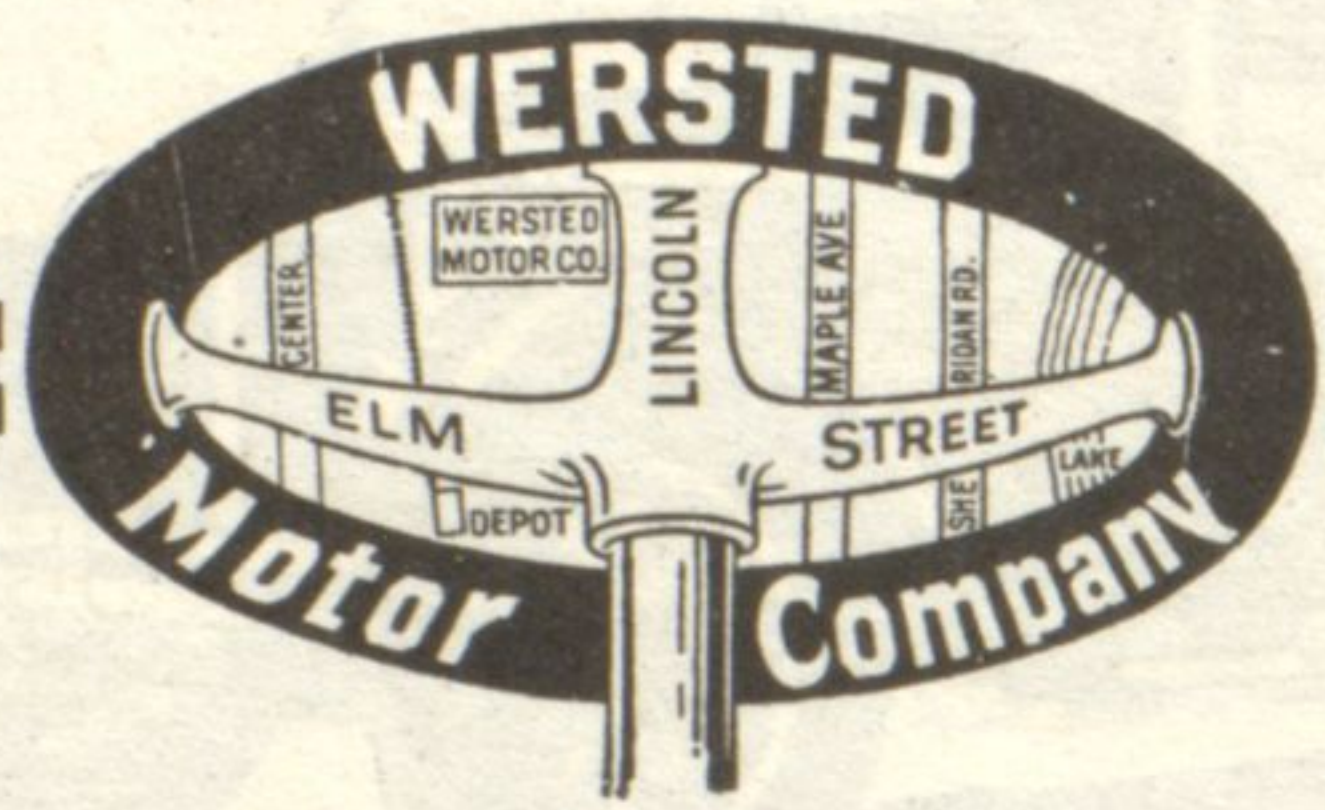


# Auto Repairing

- Repairing
- Washing
- Storage
- Painting
- Supplies
- Battery Service

We serve you completely and well  
TRY US



## Wersted Motor Co.

562 Lincoln Ave.

Phone Winn. 165



The Red Roof in No-Man's Land  
Just South of "The Cottage"

## REGULAR GREASING SAVES REPAIR BILLS

The life of your car depends on the care that you give it. Greasing and oiling play the most important part in caring for a car. Thus cars that are greased regularly have practically no repair bills and last at least twice as long. Our "Call-for-and-Deliver" service has become very popular—you will like it too.

SKID CHAINS REPAIRED

## Stephen Shimonek, Jr.

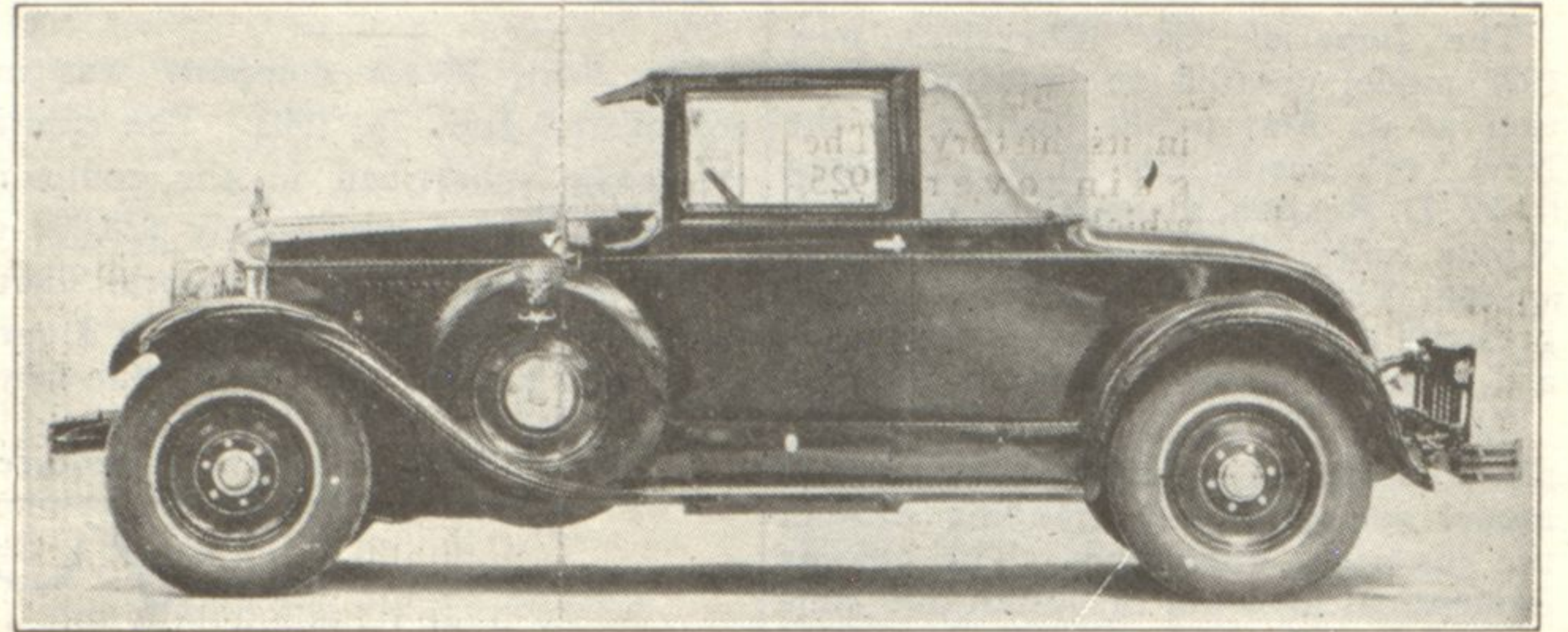
Gasoline  Oils

1928 Sheridan Road

Phone Wil. 3379

Distributor

## Smart Coupe in Cadillac Line



Cadillac offers among other new 1927 models this two-passenger sport coupe which is causing much favorable comment from motor fans. The car is one of the smartest which Cadillac has ever presented.

## Three Millionth Chevrolet Speedy Coach and Classy

Marking the latest spectacular achievement in its history as the world's largest builder of three-speed transmission cars, the Chevrolet Motor company recently announced the production of its 3,000,000th car, according to information received by Dabe-Nevit Motor Sales, 911 Linden avenue, Hubbard Woods.

The epoch-marking model, which happened to be a coach, was driven off the production line at the Flint plant by W. S. Knudson, president of the Chevrolet Motor company. The first passenger was C. F. Barth, vice-president in charge of production.

Finished in St. James' gray duco and fashionably striped in Pistache green, the milestone car flashed off the production line with scarcely more formality than attended the debut of No. 3,000,001, which followed nine seconds later.

Equipped with balloon tires, steel disk wheels, one-piece full crown fenders, bullet-type head lamps, streamline beaded Fisher body and other improvements incorporated this year, the coach displayed a distinct advance over its most illustrious predecessor, the 2,000,000th Chevrolet.

The 2,000,000th model was built after fourteen years of production, and the 3,000,000th only fourteen months later, an indication of the rapid growth of the company, which now has production facilities prepared to build 1,000,000 units a year.

## Elcar 8-in-Line Proves Merit as First Grade Car

The opening of the 1927 auto sales season brought many new developments in motor car production. Among the most phenomenal of these is the new Elcar 8-in-line. Presenting all of the regular values of cars of equal price, it has added the new "Shockless chassis." In addition to Lovejoy Hydraulic shock absorbers, each of the springs is mounted so as to eliminate the old fashioned shackle, with all of its noise, its jolts and need for oiling and the resulting comfort in riding is as unusual as it is welcome.

C. C. Fridman, the North Shore Elcar dealer, is located at 723 Ashland avenue, Wilmette, and has been identified with the automobile industry on the north shore and in Evanston for more than fourteen years. He extends an unlimited invitation to friends and patrons to call and see the Elcar at any time and announces that every Elcar is given free service for ninety days.

## Enlarge Nash Plant to Swell Production of Popular Model

Demand for the Nash Light Six since its introduction a year ago last May has been so heavy that extensions to the plant in Racine have been made necessary.

The Light Six line includes four models—touring car, coupe, five-passenger sedan and five-passenger DeLuxe sedan—all powered with the Nash seven-bearing crankshaft motor, say Frank S. Woolley and O. S. Springer, of the Nash Sales, agency, 728 Elm street, Winnetka.

The DeLuxe sedan is the newest model in the Nash Light Six series. It was introduced early in December and its appearance and equipment typifies the very latest in motor car style and beauty.

Conspicuous among the attractions of the Nash Light Six DeLuxe sedan is the lustrous lacquer finish of the fenders in a pleasing shade of deep blue. This tone harmonizes with the upper structure of the body, affording a contrast to the lighter blue shade of the lower part of the body and brilliant tone of the running gear.

The standard equipment of this sedan is noteworthy. At the front is a sturdy bumper of a design in keeping with the rich dignity of the car. At the rear are bumperettes. Mounted at the top of the winged radiator cap is a motormeter. Headlights and the cowl lights are patterned after the bullet type of design.

The upholstery furnished is of the genuine mohair throughout. The distinctively designed steering wheel is made of genuine Circassian walnut. And a highly decorative note has been contributed to the car by the beautiful walnut-finished instrument board and window ledges. Four-wheel brakes of the special Nash mechanical type are included in the standard equipment of all Nash Light Six models, as are double beam headlights, oil purifier, air cleaner, gas gauge, full force feed lubrication, both inside and outside door locks and five disc wheels.

## Ford Running at Normal Production, State Reports

Unofficial reports from the Ford plants announce a nearly normal production which is steadily increasing. No announcements have been made of anything resembling a change in models or improvement of the present line. The employment list at the two big Detroit plants is increasing daily, with indications that it will soon be back to what it was six months ago.