

Play Writing Class Resumes Activities at Annie Swift Hall

The Play Writing class, a north shore organization which is unique in the country, has begun its fall activities. Originally a project of the Drama club of Evanston, it was taken over by Northwestern university and became the most fundamental phase of the work of the Northwestern Play Shop, modeled after the 47 Harvard Work Shop made famous by its leader, George C. Baker.

The Play Writing class, however, retained its mature character, its distinctly "Town" rather than "Gown" flavor. Although undergraduate classes in play writing were established in the School of Speech, and the facilities of the stage in Annie May Swift hall and the aid of student directors and actors were obtained through the affiliation with the university, still the Play Writing class kept as its nucleus a group of experienced writers who were interested in dramatic writing.

From ten to twelve every Tuesday morning a group of almost fifty women and a few men meet in the Studio room of the Evanston Woman's club to study the technique of drama under the leadership of Theodore B. Hinckley, editor of the Drama Magazine, former secretary of the Drama League of America and popular lecturer on the theater all over the country. Writing is not required and a portion of the class consists of women who have small confidence in their creative talents but who have a live interest in the theater and in the technique of the drama. These comprise a critical audience for the reading of original scenarios and manuscripts.

After a play has been read in the class, critized and perhaps rewritten, it goes to the producing end of the Play Shop. It is given a class production to prove its acting qualities. It is probably rewritten again from this angle, and if it proves of sufficient merit, it is given an evening public performance, and in some sseac pus i performance, and in some cases is published in a series entitled "Northwestern Play Shop Plays."

Members of the class come from all the north shore suburbs and from Chicago as it meets a need not met in any other way. Indeed the opportunity is one duplicated rarely, if ever, in any part of the country. New members join at each of the sessions as each day's work is more or less a unit in itself and absences give the member the privilege of bringing guests on her membership ticket. Registration may be made at any time with Mrs. Carlos Andrews or Mrs. Harrison B. Riley, 1822 Sheridan road, Evanston.

Highland Park Group Offers Benefit Dance

"The Junior Star club of Campbell chapter Order of Eastern Star of Highland Park will give a dance Saturday evening, October 23, at Highland Park Woman's club, Sheridan road and Elm place, Highland Park. Music will be furnished by Harding's orchestra of Lake Forest. The proceeds will benefit the organ fund of Campbell chapter.

Local Violinist Booked for Winter Concert Tour

Milan Lusk, north shore violinist, who has recently returned from a concert tour of European capitals, opened his season with two recitals in Boulder and Colorado Springs, Colo. Last week he played in Wheaton, Ill. Many concerts figure on his coming season. He will be heard in New York and New Jersey and in Orchestra Hall, Chicago, in the very near future.



How little it costs!

Series 80

Four distinct models of
Custom-built Coaches

Six color options

- 5-passenger, 2-door . . \$2995
- 5-passenger, 4-door . . 3250
- 7-passenger, 4-door . . 3350
- 7-pass., 4-door Limousine 3450

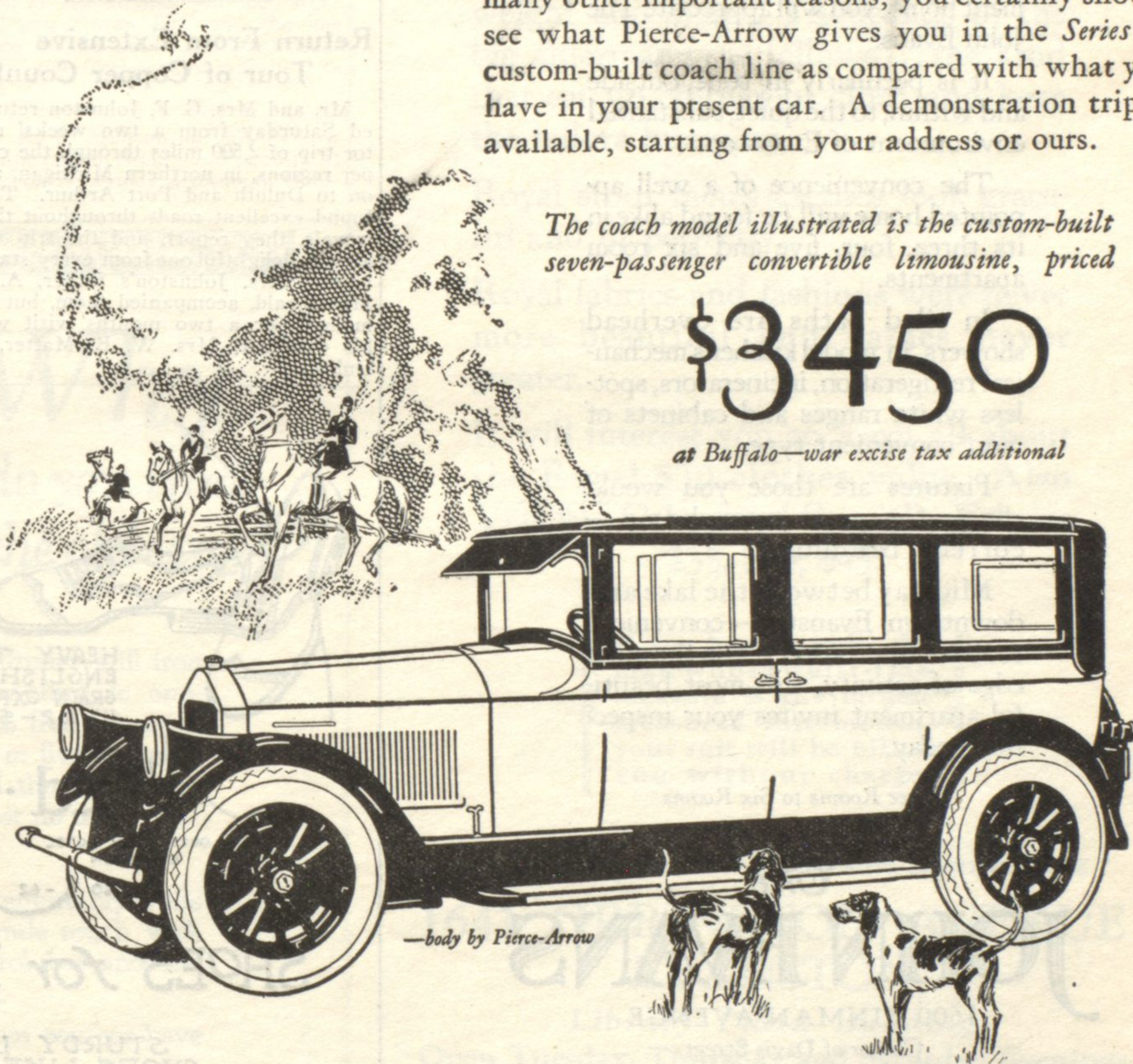
at Buffalo—war excise tax additional
—terms if desired

Perhaps you do not realize that today you can buy an easy-riding, 130-inch wheelbase, Pierce-Arrow enclosed car—its staunch body entirely hand-built by Pierce-Arrow craftsmen—with your choice of six rich color combinations—beautifully finished, appointed and upholstered in the distinctive Pierce-Arrow way—complete with Pierce-Arrow four-wheel brakes, balloon tires and Houdaille shock absorbers—for as little as \$2995. So, for these and many other important reasons, you certainly should see what Pierce-Arrow gives you in the Series 80 custom-built coach line as compared with what you have in your present car. A demonstration trip is available, starting from your address or ours.

The coach model illustrated is the custom-built seven-passenger convertible limousine, priced

\$3450

at Buffalo—war excise tax additional



—body by Pierce-Arrow

The economical Series 80 chassis powered by its Pierce-Arrow built six-cylinder, 70-horsepower engine gets 14 to 17 miles per gallon out of gasoline—15,000 to 18,000 miles out of tires. Mechanical attention, rarely needed, costs little due to national Pierce-Arrow Flat Rate Service.

PIERCE-ARROW

TOM HAY & SON, INC.

1838 Ridge Avenue

Evanston, Ill.