

**PURPLE SHOWS WELL**

**Coach "Gloomy" Glen Thistlewaite Evinces Optimism Over N. U. Grid-ders' Showing**

Coach Glenn Thistlewaite permitted smiles to flicker across his usually gloomy countenance this week as his aspiring grid team resumed workouts following Saturday's decisive win over the visiting South Dakota eleven. The showing of the Wildcats in the season's opener is not regarded as a real test of their strength by Thistlewaite since South Dakota's power is more or less of an unknown quantity.

What did hearten the Purple mentor more than anything else and caused him to wax a bit optimistic was the dash and ability displayed by a flock of half-backs who are waging a determined contest for regular assignments in the backfield.

Twelve backfield men got a chance to show their stuff against the Coyotes and all performed in a creditable manner. Led by Capt. "Moon" Baker these lads cavorted about the field, scoring five touchdowns and making twenty-two downs.

Six of the dozen backs are Sophomores while three others are playing their second year on the team. Baker, Schumacher and Solheim are the only three year men in the backfield.

Paul Griffith and Vic. Gustafson, two lads who performed last season, demonstrated that they will be two very dependable ball carriers this fall. Both are making a determined bid to land the regular job at right half and it is going to be hard to keep either out of the game.

Among the Sophomore backs who did some able work against South Dakota are Holmer, Levison, Colin, Acher, B. Fox and Welsh. Levison, who starred for Evanston High school two years ago, is one of the finest blockers seen at Northwestern in years.

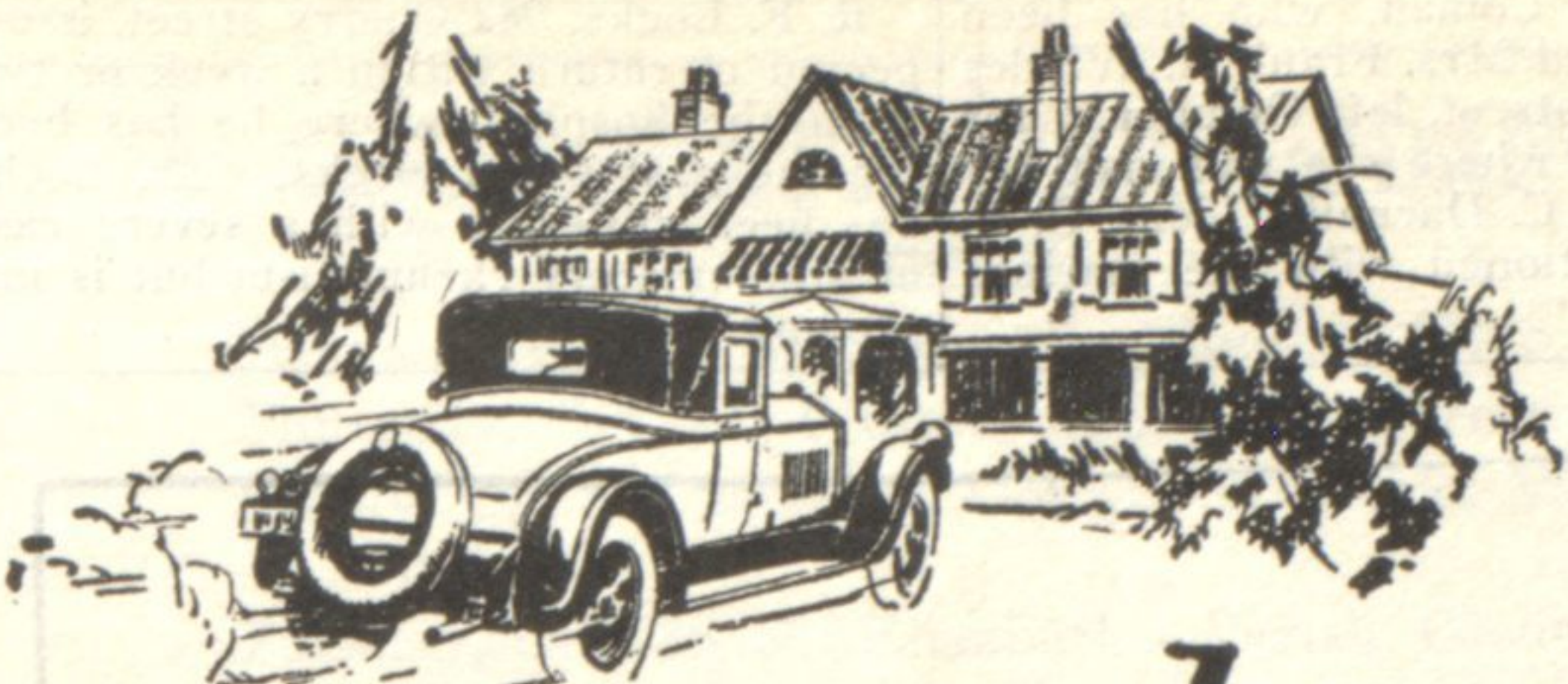
The line also stood up well under the pounding of the husky boys from the Northwest. Five letter men started the game at the forward positions including Bovik and Fisher at ends, R. Schuler and Johnson at tackle and Seibenmann at guard. Dart, a Sophomore, seems to have the call on the other guard position, and four Sophomores are making a try for the center job. They are Rosie, Hellerman, Klein and Wymann.

**Moth-No-Mor Service Locates in Wilmette**

The Moth-No-Mor Servicers operating in Chicago have opened a branch station in Winnetka to take care of their business from that section. The Rennecker Drug company, Wilmette and Central avenues, is to be their representative.

H. Lewis, manager of the Moth-No-Mor servicers, states that the process employed by his company in protecting household furnishings from moth damage, is the only one in the entire country that is covered by a written lifetime guarantee on all articles treated.

**1867 Bournique's 1926**  
 Dancing Department  
 Private classes personally conducted by  
**ALVAR L. BOURNIQUE**  
 Evanston Chicago Winnetka  
 Oct. 18 Oct. 19 Oct. 20  
 New families accorded membership when presenting satisfactory references.  
**OFFICE and STUDIO**  
 1134 N. Dearborn Street, Chicago



# Your personal car — this stylish PIERCE-ARROW

It's new—this smart Pierce-Arrow coupe with permanent top of highly finished landau leather and staunch, sturdy body of northern white ash thickly plated with hand-hammered aluminum.

You never sat in a more restfully tilted driving seat—broad and deep—and so roomy for two that a third passenger will often be invited to share it.

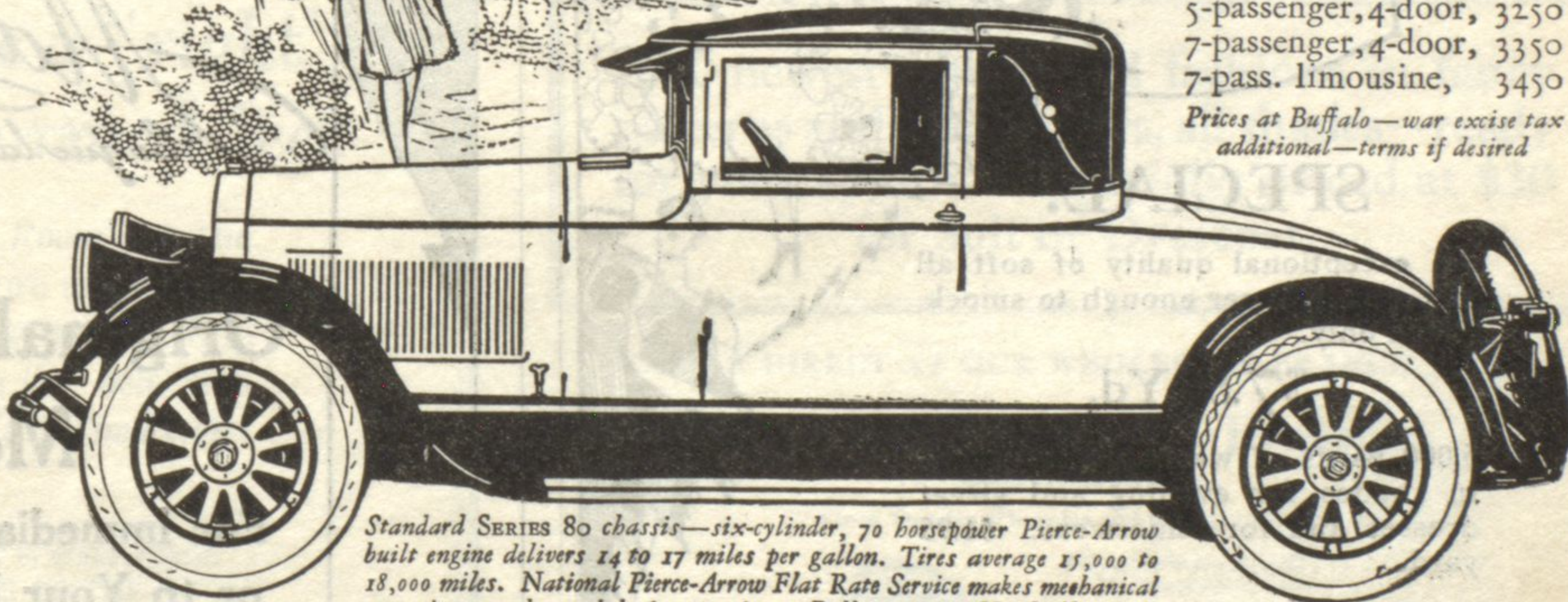
Professional men and busy clubwomen require a fashionable, easily manageable per-

sonal car—and this is it. A full 130-inch wheelbase for riding comfort—easily parked—turns in a short radius.

Bodies come in a choice of six charming color combinations. Inside is soft broadcloth with option of special leather or mohair upholstery.

Capacious rear deck can be equipped with a disappearing rumble seat at slight extra cost.

The price, without rumble seat, is **\$3100** at Buffalo—war excise tax additional



## Series 80 Custom-built Coaches

- Bodies by Pierce-Arrow  
 Six Color Options
- 5-passenger, 2-door, \$2995
  - 5-passenger, 4-door, 3250
  - 7-passenger, 4-door, 3350
  - 7-pass. limousine, 3450
- Prices at Buffalo—war excise tax additional—terms if desired

Standard SERIES 80 chassis—six-cylinder, 70 horsepower Pierce-Arrow built engine delivers 14 to 17 miles per gallon. Tires average 15,000 to 18,000 miles. National Pierce-Arrow Flat Rate Service makes mechanical attention, rarely needed, inexpensive. Balloon tires, Houdaille shock absorbers and Pierce-Arrow four-wheel safety brakes are standard equipment. Arrange for demonstration.

**TOM HAY & SON, INC.**  
 1838 Ridge Avenue Evanston, Ill.