

New Cream Top Milk

Comes from Tubercular-tested cows. Sanitary hood sealed caps.

Ask Our Drivers

Or Phone Wilmette 3029—
Greenleaf 820.

The cream taken from this milk will whip



15c per quart

F. B. GEORGE CO.

4800 Sheridan Rd.

The Decreed Mode of the
Arriving Season!

New Utility "Club" Coats

Popular Smart, Boyish Style!

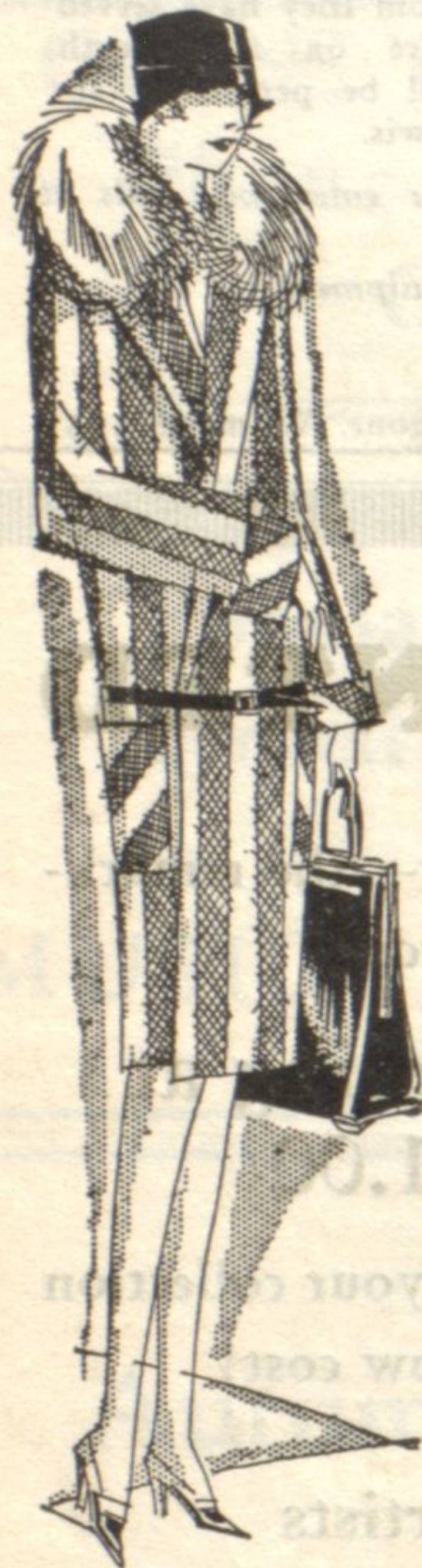
\$35

Of Novelty Woolens,
Fur-trimmed.

Fur Sale!

Now in Progress

Savings of 20% to 30%



F. B. GEORGE CO.

4800 Sheridan Rd.

New Frocks

In Paris:

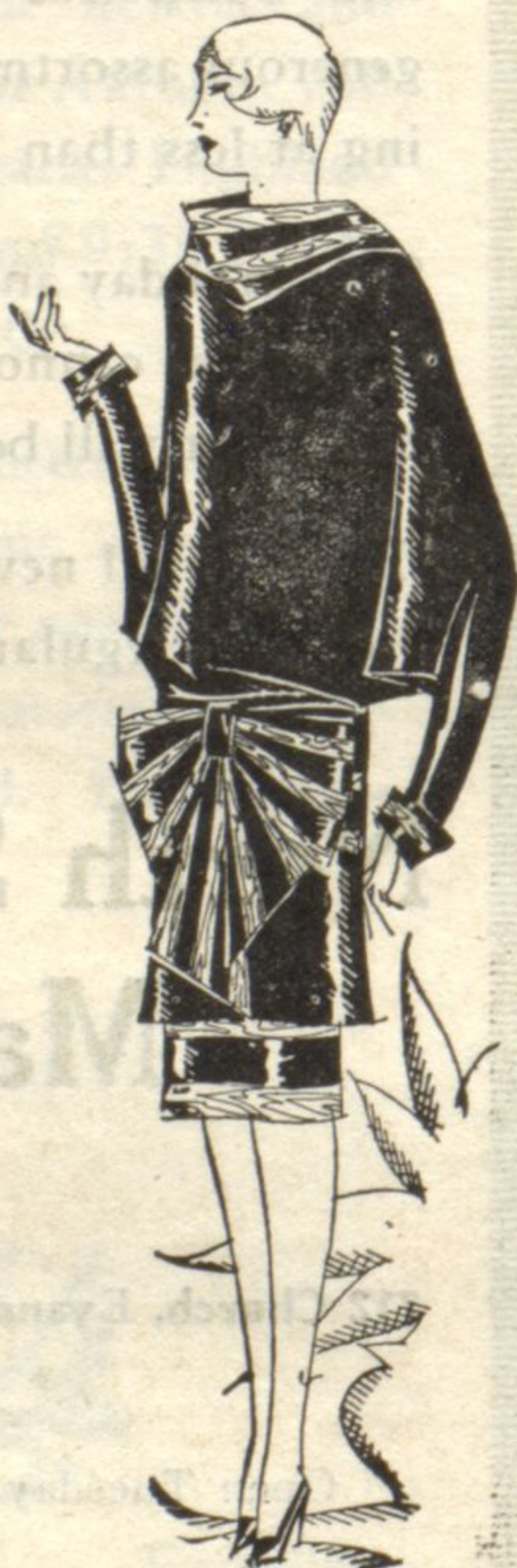
THEY are showing just such Frocks as these in the Famous Style Shows. Frocks showing the Chanel hip blouse; the moire ribbon bow in front, the bat wing sleeve, and the high neckline. Featured here at George's for

\$39

Reduced!

VACATION FROCKS
Sports Silks,
Georgettes, etc.

\$10



Milan Lusk Home From Successful Tour of Europe

Milan Lusk, internationally known violinist residing at 810 Michigan avenue, Wilmette, has returned from an extensive concert tour of Europe. He appeared in London, Brussels, Prague, Paris and many other European music centers and famous watering resorts. Everywhere his playing aroused the greatest enthusiasm.

Quoting from one of the most recent European notices:

"Milan Lusk is one of the fortunate violinists whose art easily and quickly captures the recognition of the musical world. His playing excels in all the attributes which constitute a virtuoso player: A spontaneous interpretation, a finished and fleet manner of execution, and a lovely tone."

Milan Lusk will teach a limited number of talented violin students at his home studio in Wilmette. Arrangements are now being made and those interested have been requested to apply at an early date.

IN WESTERN TOURNEY

Jimmy Fee, professional at the Rolling Green Country club, left Sunday for Indianapolis, where he is playing the last of this week in the Western Golf association open tournament. Several north shore members of the club are following him in the tournament.

EXPLAINS REGIONAL SCHEME OF HIGHWAYS

W. W. DeBerard, Regional Planning Association Engineer, Addresses Rotarians

"I have consistently employed my influence to hasten the construction of Wilmette's portion of the new through traffic highway that will traverse what is now Main street," W. W. DeBerard, consulting engineer of the Chicago Regional Planning association and Wilmette Village trustee told members of the Rotary club at its luncheon Wednesday of this week.

"Wilmette must come to the realization that it is concerned with traffic coming from outside the village, as well as with its local traffic problems," Mr. DeBerard declared, in pointing out the fact that improvement of highways to the south of the village, including the new McCormick boulevard, Western avenue in Chicago, and Asbury avenue in Evanston will pour an ever increasing traffic into the village which must pass over Sheridan road, Main street or Ridge avenue. Just now, he explained, Main street is the logical artery to the north and should be widened and improved without undue delay.

Condemnation Stalls Project

Mr. DeBerard explained that the entire project of the widening and paving of Main street was being held back by condemnation proceedings concerned with a small parcel of land at the north limits of the village. He stated, however, that contract for the improvement should be let next spring. Winnetka, he explained, has already let contract for a large portion of its section of the proposed through highway flanking the Chicago and North Western railroad on the west.

The speaker, using maps especially prepared by the engineers of Regional Planning association, outlined to the Rotarians the comprehensive plan of the association for a network of highways that will some day provide broad parallel along every section line in the Greater Chicago area, or within a radius of fifty miles from the metropolis.

Today, he declared, only thirteen highways lead directly into Chicago from the suburban area. It is the immediate task of the association to secure the co-operation of the numerous governing bodies in the territory in straightening out kinks, jogs and right angle turns to provide many more direct routes into the city. A railroad, he said, cannot operate with bridges and culverts washed out here and there, or loose rails in other places, and, by the same token, a highway is no highway at all if it is not improved and made accessible to traffic throughout its length.

Mr. DeBerard emphasized the fact that the Planning association has no powers, but exists simply for the purpose of offering suggestions to the governing bodies in the Greater Chicago area. Already, he asserted, the association has been successful in securing the co-operation of many of these taxing bodies in carrying through much-needed improvement, especially in connection with the extension of the highway plan.

John Cogswell, son of Mr. and Mrs. E. R. Cogswell, 512 Hawthorn lane, and Charles Howe, son of Mr. and Mrs. Charles D. Howe, 240 Kenilworth avenue, Kenilworth, left this week on a two weeks' canoe trip. Mr. and Mrs. Cogswell drove them to Ft. Atkinson, where they will make their start. From there they plan to paddle to Dixon, Ill., on the Rocky river, camping as they go.

**LOW
SUMMER
FARES** to
**Wisconsin
Minnesota
Colorado
Yellowstone
Utah
California
Pacific
Northwest
Jasper National Park
Black Hills
OF SOUTH DAKOTA**



Wide choice of routes.
Stopover anywhere—Splendid through trains.
Ask for our popular booklet "Forty Ways and More to California and the North Pacific Coast!"

Escorted all-expense tours to Yellowstone, Colorado, Zion National Park and California. Ask about them.

For full information and descriptive folder apply to ticket agents
Chicago & North Western Ry.
81376