

SCOUT LEADER DIES

Bradford Hutson, Eagle Scout and Senior at New Trier Stricken Tuesday

Bradford W. Hutson, 17 years of age, son and only child of Mr. and Mrs. Willis Hutson, of Wilmette, passed away early Tuesday morning at the Evanston hospital. Death was caused by an attack of scarlet fever which developed into complications. He had been ill only two weeks. Services were held at the chapel at the Evanston hospital Wednesday afternoon, Dr. Stephen A. Lloyd, minister of the First Congregational church, officiating.

Bradford, who some time ago attained the rank of Eagle Scout, the highest honor in Scouting, has been associated with the Boy Scout movement in Wilmette for several years. He was assistant scoutmaster of Troop II, of the Congregational church there. He was at the time of his death, a Life Scout and secretary of the Wilmette Scoutmasters' council. He was also an ardent radio enthusiast, member of the American Relay Radio league and of the New Trier Radio club and a licensed government radio operator.

At New Trier High school, where he was a member of the senior class, Bradford won a place of prominence in the student body. He was a member of many important school organizations and a fine scholar. The senior class has foregone its spring social party as a special tribute to him.

Bradford was named after the historic Governor Bradford of Massachusetts, of whom he was a descendent.

Memorial services in honor of Bradford Hutson will be held in the Wilmette Congregational church Sunday afternoon, May 9, at 4 o'clock, under the auspices of the Wilmette Boy Scout

Eagle Scout Dies



Bradford W. Hutson, assistant Scoutmaster of Roosevelt Troop, Wilmette, and popular member of the senior class at New Trier High school, died suddenly Tuesday after an illness of two weeks. Memorial services will be held at the Wilmette Congregational church Sunday afternoon, May 9, at 4 o'clock.

organization and the Church school of that church of which Bradford was a faithful member.

Mrs. Marshall Davies of 153 Robsart place, Kenilworth, is giving a luncheon and bridge for eight guests today in honor of Mrs. Tom Knox of Wilmette.

**Church
sani-white Seats**

**SPECIAL
PRICE**

\$12.50



**Are you proud
to have guests go into your bathroom?**

IF THE toilet seat is spotlessly white, clean and sanitary, the whole room looks attractive and inviting. Once a Church Seat is installed you can always be proud to have guests go into your bathroom.

Church seats fit any bowl. We can put one on for you in a few minutes. You will be surprised and delighted at the wonderful improvement it makes

in the looks of the whole room.

The handsome all-white surface of Church Seats is a seamless ivory-like sheathing. Won't wear off like paint. Won't crack or split. Stays spotlessly white. Won't discolor, absorb moisture or retain odors. As easy to clean as porcelain. Absolutely sanitary. Come in and see them or order by 'phone.

For Sale and Installed by

VIC J. KILLIAN, Inc.

Plumbing Contractors

874 Center St.

Winnetka 1260

The New Line of

Brunswick
Panatrope and Radiola

Is Now on Display

Two instruments in one... the Panatrope, most marvelous musical invention in world's history, which recreates music electrically... combined with the new Radiola Super-Heterodyne... demonstrations now.

THE Brunswick Panatrope marks an epoch in the music life of the world. It is the FIRST purely electrical reproducing musical instrument.

Electrical reproduction means music exactly as it is. That is the astounding thing about the Panatrope. Its music is true—as true as your face in a mirror!

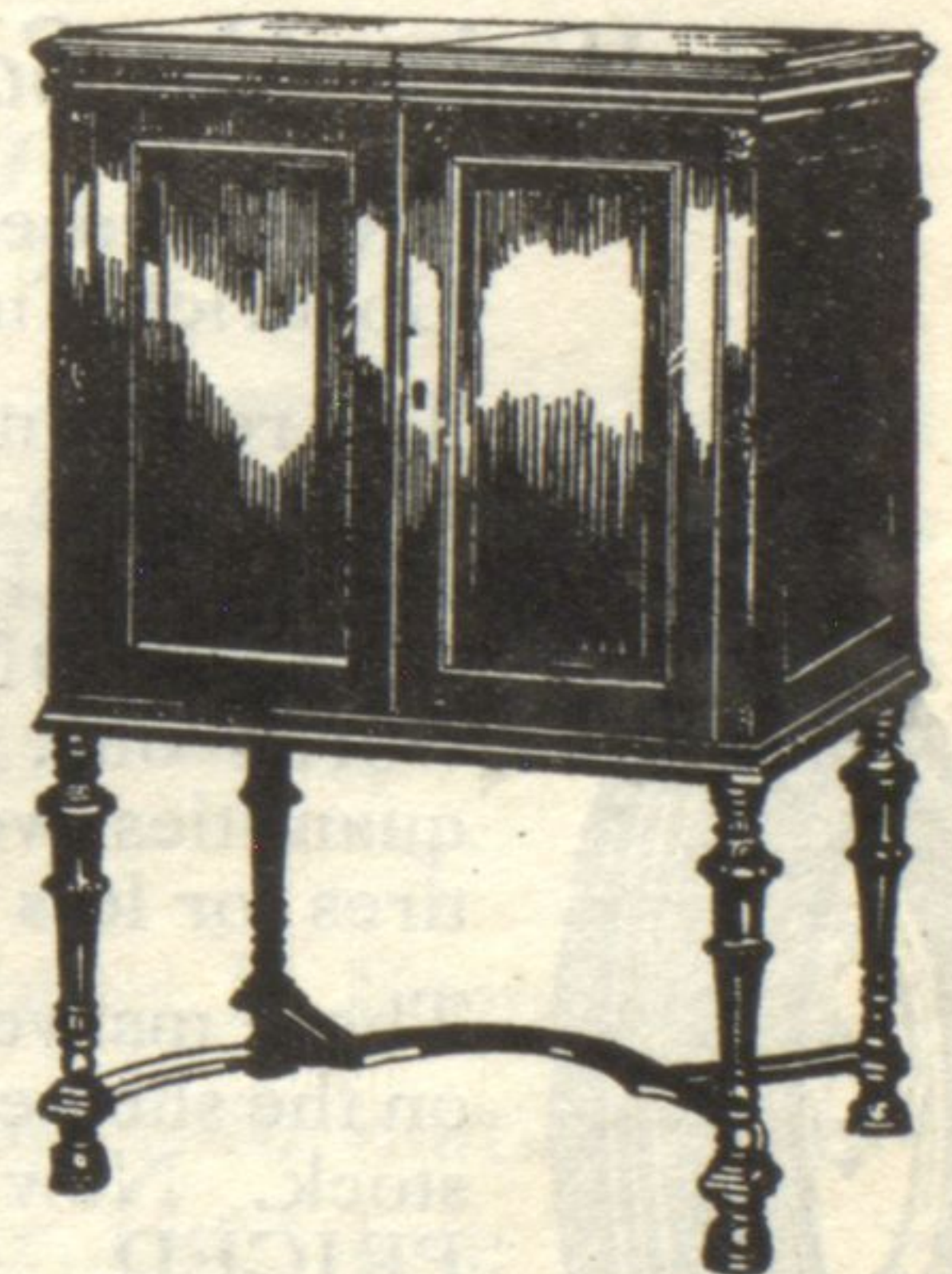
A single cabinet now contains the Brunswick Panatrope and the Radiola Super-Heterodyne. By merely touching a lever you may change from the incredibly beautiful recorded music of the Panatrope to that of the rhythmic world of radio.

Four institutions whose names are household words together achieved the Panatrope. They are the Radio Corporation of America, General Electric Company,

Westinghouse Electric & Manufacturing Company, and Brunswick. Only so imposing an effort could have achieved so inspiring a result.

Since the Panatrope and Radiola was first put on display a few months ago, more than four million persons have heard it—and marvelled! It commanded front-page attention for weeks in the great metropolitan newspapers of the United States. Nothing in the world of music has ever created such profound interest and discussion.

To music, and to radio likewise, the Panatrope and Radiola brings a new day. Hear this matchless instrument. Learn how fundamentally this new invention is going to affect all music and radio. Your Brunswick dealer will gladly demonstrate it for you.



Model PR 48C, Panatrope equipped with either 6-tube or 8-tube Radiola Super-Heterodyne. Finished in walnut. Height 51 inches. Width 34 inches. Depth 22 inches.

No Exposed Wires
No Batteries
Operates entirely
from light socket
Sold on
Convenient Terms

THE Brunswick SHOP
Panatropes-Radiolas-Records

564 Lincoln Avenue

Winnetka 2129