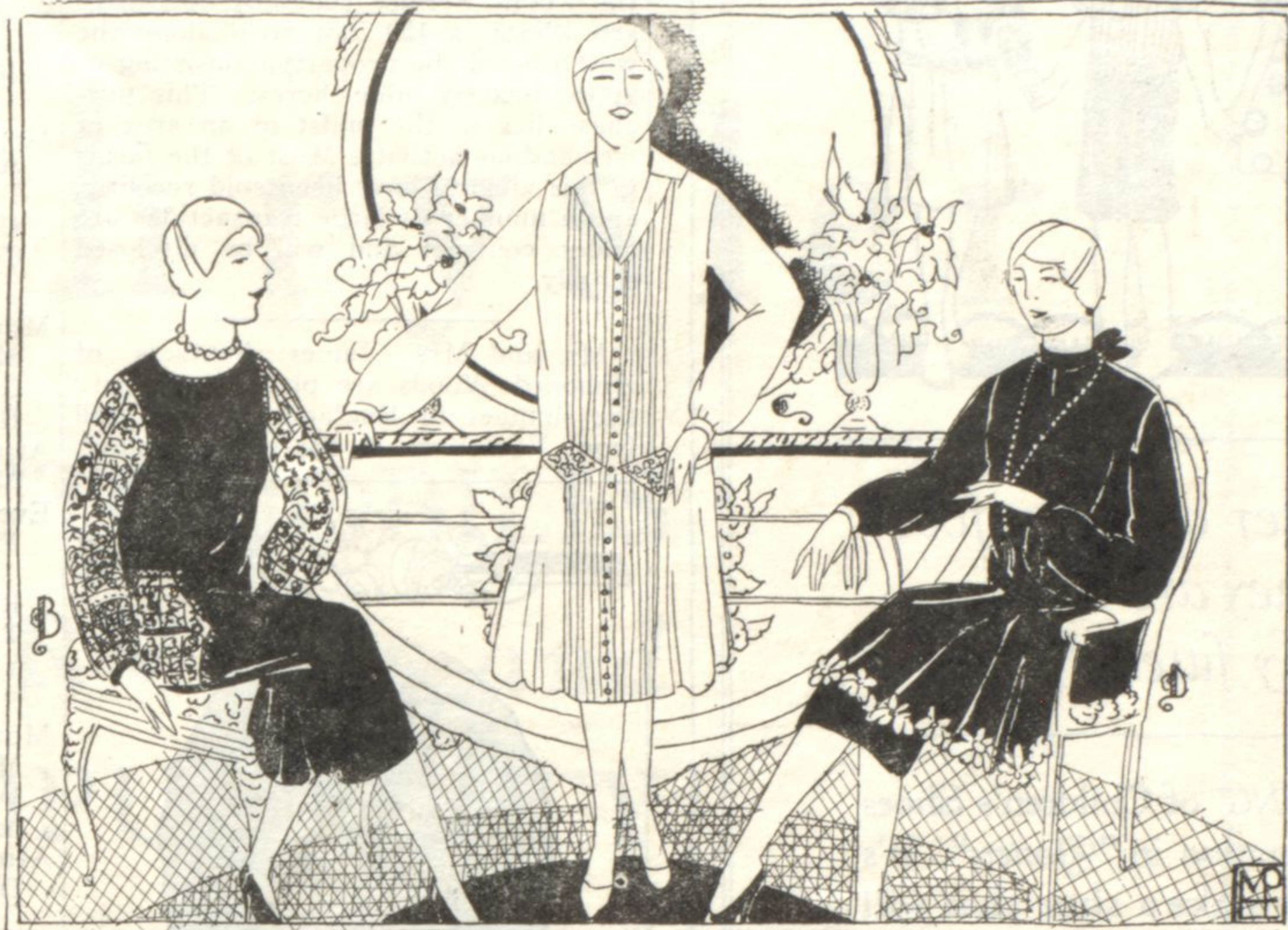


TELEPHONES
University 2400
Rogers Park 2775
Wilmette 1100

Rosenberg's

Open A Charge Account at Rosenberg's and enjoy its convenience.

Evanston—Davis Street at the "L"



PICTURED AT LEFT
B—A black crepe straight-line dress with printed silk sleeves and large fancy pocket lavishly embroidered in gold, \$17.50.

MODEL IN CENTER
C—Bois de rose crepe dress with lace medallions at waistline; V-neck and tiny buttons down front add a slenderizing effect, \$17.50.
D—A navy blue dress of flat crepe with applique daisy around apron in front, \$17.50.

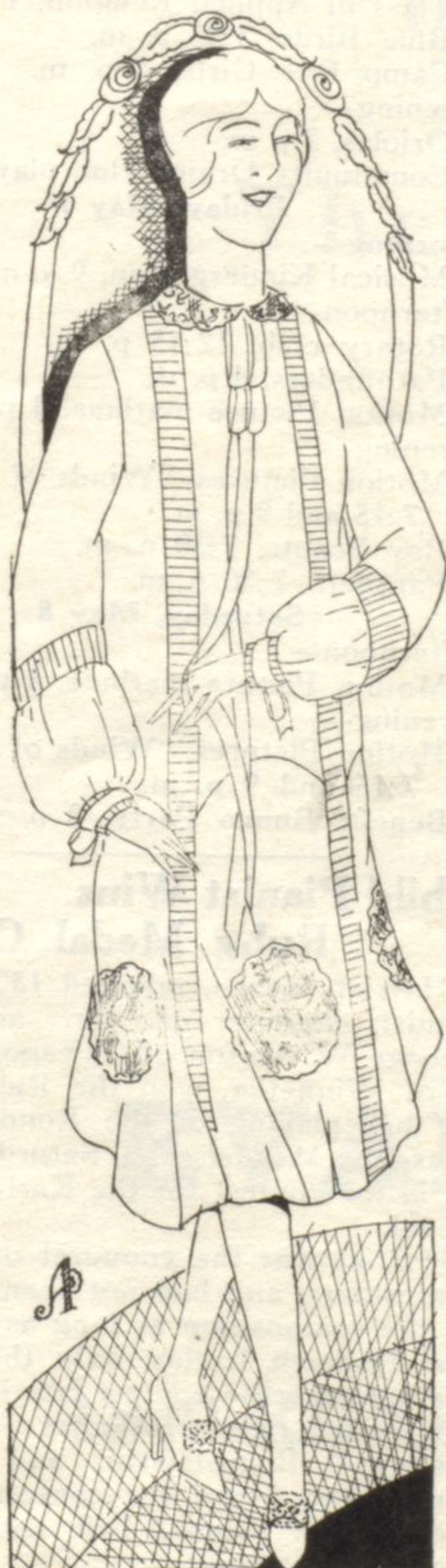
SALE OF NEWEST SILK DRESSES

In the Large and Extra Sizes
Fashioned of Flat Crepe, Printed
Silks and Georgette

\$17.50

Here Rosenberg's have assembled a most attractive group of dresses especially designed for those who take the larger sizes. Whether you are tall or short, in this lovely group you will find dresses that fit perfectly—dresses that will seem made for you alone. Every one is correctly proportioned with ample fullness in sleeves and hips.

Each is of a beauty imparted by lovely silks, bewitching trimmings and graceful lines. And the price is exceedingly low. The models sketched will give you an idea of their winning styles; only your personal inspection will reveal their exceptional values! Come today or tomorrow.



PICTURED AT LEFT
A—Georgette frock, novelty flare effect, trimmed with embroidered lace medallions and lace collar to match; narrow panels with ribbon. Narrow cross tucked panels give smart effect, \$17.50.



PICTURED AT RIGHT
E—A tan georgette frock with side panels shirred at the top and with full puff sleeves shirred into a narrow cuff. The vestee is of heavy embroidery. The panels at the side are shirred, \$17.50.

Rosenberg's Women's Apparel—Second Floor

TWO DELIVERIES ARE MADE TO THE NORTH SHORE EVERY DAY