

**North Shore Line
Report Indicates
Splendid Progress**

The Chicago North Shore and Milwaukee Railroad company—the North Shore Line—carried a total of 18,229,160 passengers during the year 1925, or an increase of 1,057,975 as compared with 1924, on the combined transportation facilities of the company.

This is one of the many interesting facts on growth and expansion set forth in the annual report for the year 1925 just sent to stockholders by the company.

The main line railroad, connecting the Chicago Loop and downtown Milwaukee and serving intermediate points with high-speed electric transportation, carried 9,814,594 revenue passengers, an increase of 354,480 over the previous year.

A total of 536,095 tons of merchandise was transported over this line by the merchandise despatch service. This is an increase of 202,207 tons over the total merchandise handled in 1924. Healthy increases were also made in the express and milk departments, it was said.

"The larger electrically-operated railroad service provided the public is seen in the fact that North Shore line trains operated 10,989,774 car miles, an increase of 1,107,975 miles over the previous year," adds the report. "This does not include car mileage of city lines."

"On the motor coach routes, operated as auxiliary to the high-speed electrically-operated railroad, 963,503 passengers were carried. This is an increase of 175,376 over the total, carried in 1924."

Parlor and dining car facilities on the limited trains are being used on a constantly increasing scale. This is attested by the fact that 79,000 meals were served and 39,000 riders were carried in parlor cars during 1925.

The stockholders of the North Shore Line number 8,250, the majority of whom are residents of the communities served. The larger percentage of employes are stockholders.

**Announce Christmas Seal
Sale Awards in Schools**

For the sale of Christmas seals the following prizes were awarded to Wilmette schools. The awarding of these various prizes was in charge of Mrs. John Hoffman, Christmas seal chairman in Wilmette and Winnetka: 17 health thermometers; 23 games; 3 Clothespin Pilgrims; 24 health book covers, for each pupil in a room selling \$50 worth or more. (Gross Point); 183 health book covers, (St. Francis Xavier); 35 health book covers, (Miss Johansen, 10th street).

Christmas seal prizes awarded to Winnetka schools were as follows: 184 health book covers; 14 games, (Over the Hills to Health); 35 health checker games, for \$1.00 sales by pupils that belong to the Modern Health Crusade; 1 map and crayons, special prize for Miss Ducher's room; 3 Clothespin Pilgrims, a booklet, special prize for \$1.00 individual sale.

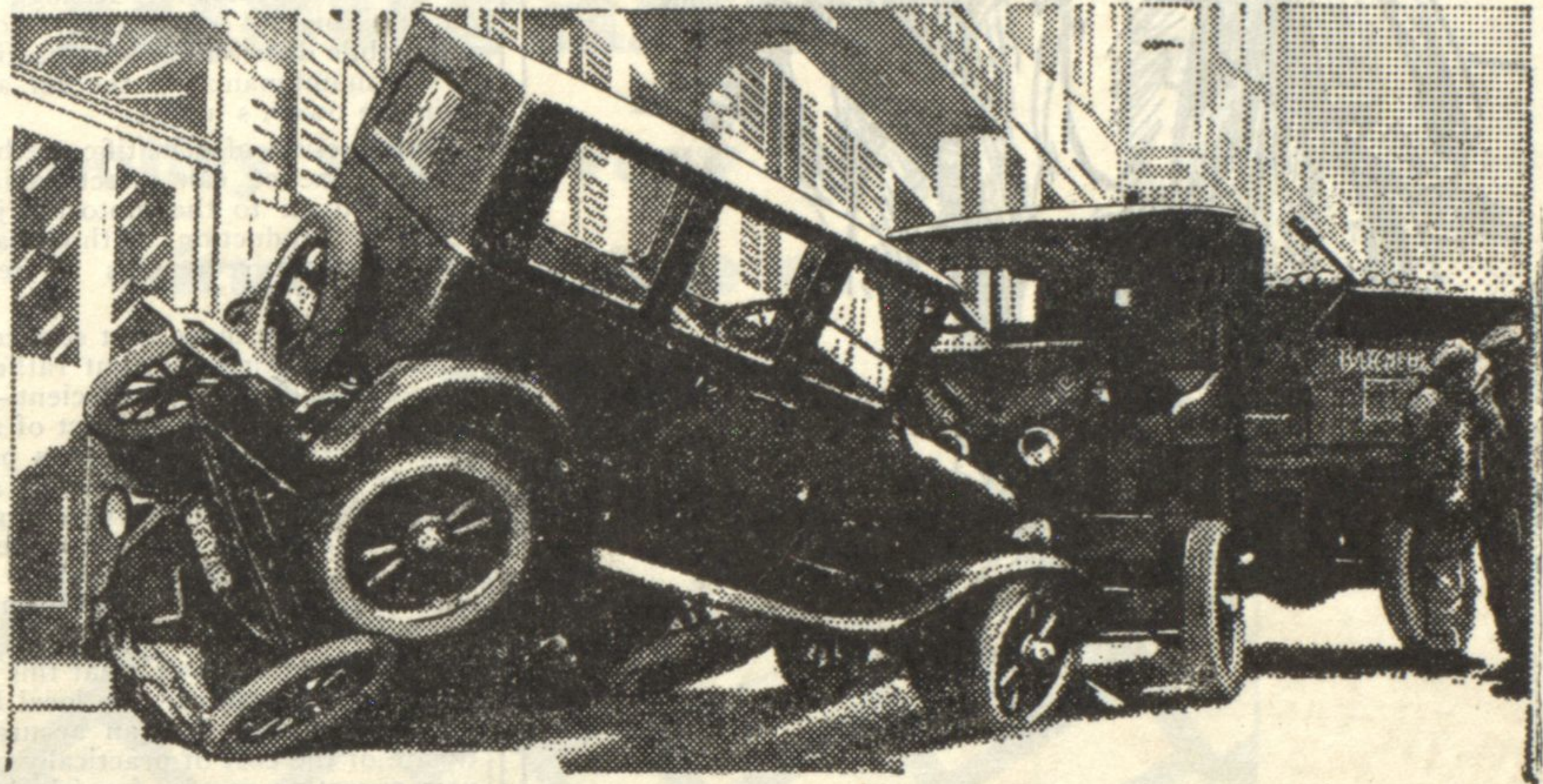
The Joseph Sears school in Kenilworth, whose superintendent is E. L. Nygaard, made unusual sales, the sales amounting to \$3.27 for each pupil in the school. This school received two prizes.

K. OF C. MEETING TUESDAY

Quilmette council, Knights of Columbus will hold its regular meeting in Odd Fellow's hall, Wilmette, Tuesday evening, March 9. At the last meeting of the council John J. Moran gave the members an outline of the plans for the great Eucharistic Congress to be held at Mundelein, Ill., this summer.

**'YOU ARE ENTITLED TO KNOW THE FACTS
DODGE BROTHERS, INC.**

**Only STEEL
could meet a test
like this!**



**A Dodge Brothers Motor Car . . . A speeding truck
racing down hill and out of control . . . A collision . . .**

Take one look at this photograph. It is not pretty, to be sure, but it will convince any sensible man that all steel construction is the only safe construction for a motor car body.

That is why Dodge Brothers introduced the all steel body more than eleven years ago, and this year greatly improved and perfected it.

In fact, Dodge Brothers are convinced that the day is not far off when wooden motor car bodies will be a curiosity. People will shudder at the thought of having ridden in them and will thank Dodge Brothers for the greater safety, durability—and beauty, too—of all steel construction.

A steel body will stand up under impacts that would crush the average body to bits. Steel cannot splinter. Steel cannot burn. Steel is an armor of protection on the crowded, hurrying highway.

Outwardly, nearly all types of bodies appear to be all steel. In reality, however, most of them are simply frames of wood covered by a metal shell.

Dodge Brothers Motor Car bodies are steel through and through—steel reinforced by steel—buttressed and braced by steel—even the frames and running boards are steel.

And slender, stronger steel corner posts replace the customary bulky posts of wood, affording full, unhampered driving vision on all sides—a safety feature of the first importance!

Travel in safety! Powerful, quick-action brakes, a chassis world-famous for its sturdiness, and a body of steel—these explain the enviable reputation for safety enjoyed by Dodge Brothers Motor Car—and the enviable feeling of safety enjoyed by those who drive it.

The car will continue to be a "four". No reasonable buyer will be distracted from the issue of QUALITY by mere CYLINDER propaganda.

WERSTED MOTOR CO.

562 Lincoln Ave. Phone Winn. 165

**DODGE BROTHERS
MOTOR CARS**