

Costume Slips

Slips to Match Milady's Gown

\$5.95



Costume slips made of a new silk of gloriously rich luster and sleek smoothness in tan, navy, gold, red, capri blue, gray, black, white and flesh. They are finished with hand embroidery, scallops, ruffles, pleats and hemstitching. The sizes are 36 to 44.

Combination Step-Ins

\$2.50

A combination step-in of Rayon silk in flesh, white and peach, sizes 36 to 42, for \$2.50.



\$4.50

A combination step-in of pure silk jersey in flesh color only, sizes 36 to 42. Price \$4.50.

\$3.95

A light weight Milanise combination step-in, in flesh color only. Sizes 36 to 42. Price \$3.95.

Girls' Middy Blouses and Skirts

Blue Serge Skirts

\$4.50

Middy skirts of good quality storm serge buttoned to white waist. Many pleats give ample fullness. Sizes 6 to 16.

Middy Blouses

\$1.75 to \$2.50

Middies of all white jean cloth with or without braid trimming, of cadet blue with white braid trimming and a touch of red, or of white with cadet blue collar, all with long or short sleeves, in sizes 6 to 16, priced at \$1.75 to \$2.50.



Second Floor



Queen Make Everyday Dresses

1918

1918—Above, left. A charming model of Everfast Biltmore stripes in blue with red and tan with brown. Sizes 16 to 42. Price

\$2.95

1954—Above, right. An Everfast Playtime print trimmed with plain colors in blue, green and tangerine. Sizes 36 to 44. Price

\$4.95

1985—Lower, left. A poplin frock in pink or green block print. Sizes 36 to 46. Price

\$5.95

1969—Lower, center. An Everfast Suiting print in gold, blue, green and lavender. Sizes 36 to 44. Price

\$5.95

Second Floor

Maids Aprons

50c, 95c and \$1.25

Maids' serving aprons in white, plain and trimmed with scallops, embroidery and ric rac. Values at 50c, 95c and \$1.25.

Second Floor



WASH DRESSES

This is the only store in Evanston offering the increasingly popular "Queen Make" dresses. We have sizes 16 to 46 in these guaranteed fast color garments of such desirable fabrics as Rayopak, Radioux Chiffon and Everfast in a price range of \$2.95 to \$12.95.

"Queen Make" Dresses are an Embodiment of Four Features:

1. The very newest mode of the hour.
2. Beautiful and careful workmanship.
3. Fabrics that are guaranteed not to fade.
4. Prices that are low, for the high quality.



Queen Make Everyday Dresses

1985



Queen Make Everyday Dresses

1969



Queen Make Everyday Dresses

1937



Queen Make Everyday Dresses

1947

1947—Above, left. A distinctive Rayopak of black and white stripes trimmed with large pearl buttons and side pleated skirt. Sizes 36 to 44. Price

\$7.95

1924—Above, right. An attractive gingham made on straight lines with plain collar in assorted colors. Sizes 36 to 46. Price

\$3.50

1937—Lower, right. A beautiful Rayopak with self color trimmings in blue and green. Sizes 18 to 44. Price

\$5.95

Second Floor

Fringe Scarfs

\$1.95

These are dainty fringe scarfs of plain georgette. They are 2 yards long and are here in all the popular shades.

First Floor

New Spring Hats

Hats in bobbed hair or 22 head size of silk or silk and straw combinations made in tam or soft collapsible shapes trimmed with metal ornaments, ribbon, straw braid, applique and silver and gold stitching in the season shades.

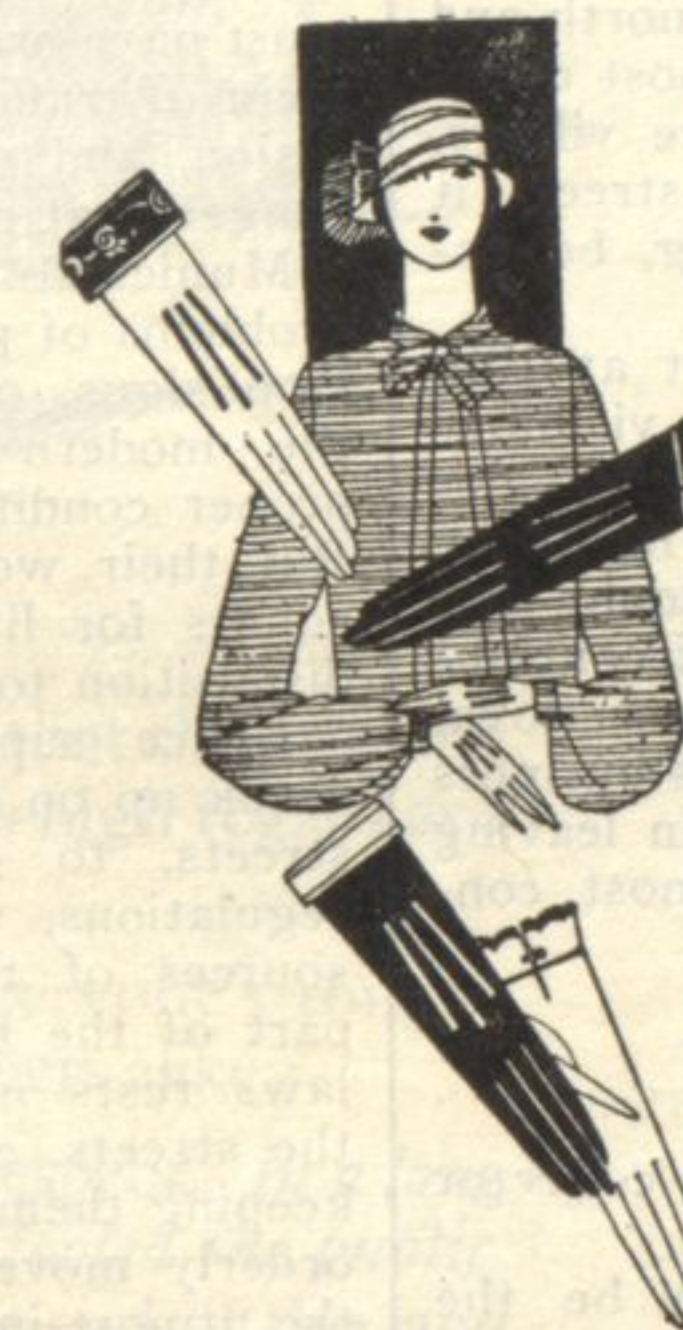
\$6.50 to \$12.00



Millinery Department—Second Floor

Chamoisuede Gloves For Spring

\$1.75



New Spring styles in the Van Raalte glove of light-weight suede will please the woman of discrimination. Neat fitting gloves with side snap and turn back cuff lined with orange and blue self material. Sizes 6 to 7.

Guaranteed Chiffon Hosiery

\$2.45 pr.

This is the only North Shore store to offer an absolutely unrestricted guarantee with every pair of these duo toe and heel, full fashioned, chiffon weight hose. An unqualified guarantee bond is issued with every pair. Sizes 8 1/2 to 10 in blondine, mallacca, dust, rose, beige, natural and other shades.



Hosiery—First Floor



At Fountain Square—Evanston

Deliveries at 10 A. M. and 3 P. M. in Evanston and North Shore Suburbs—Telephone University 1024—Wilmette 600