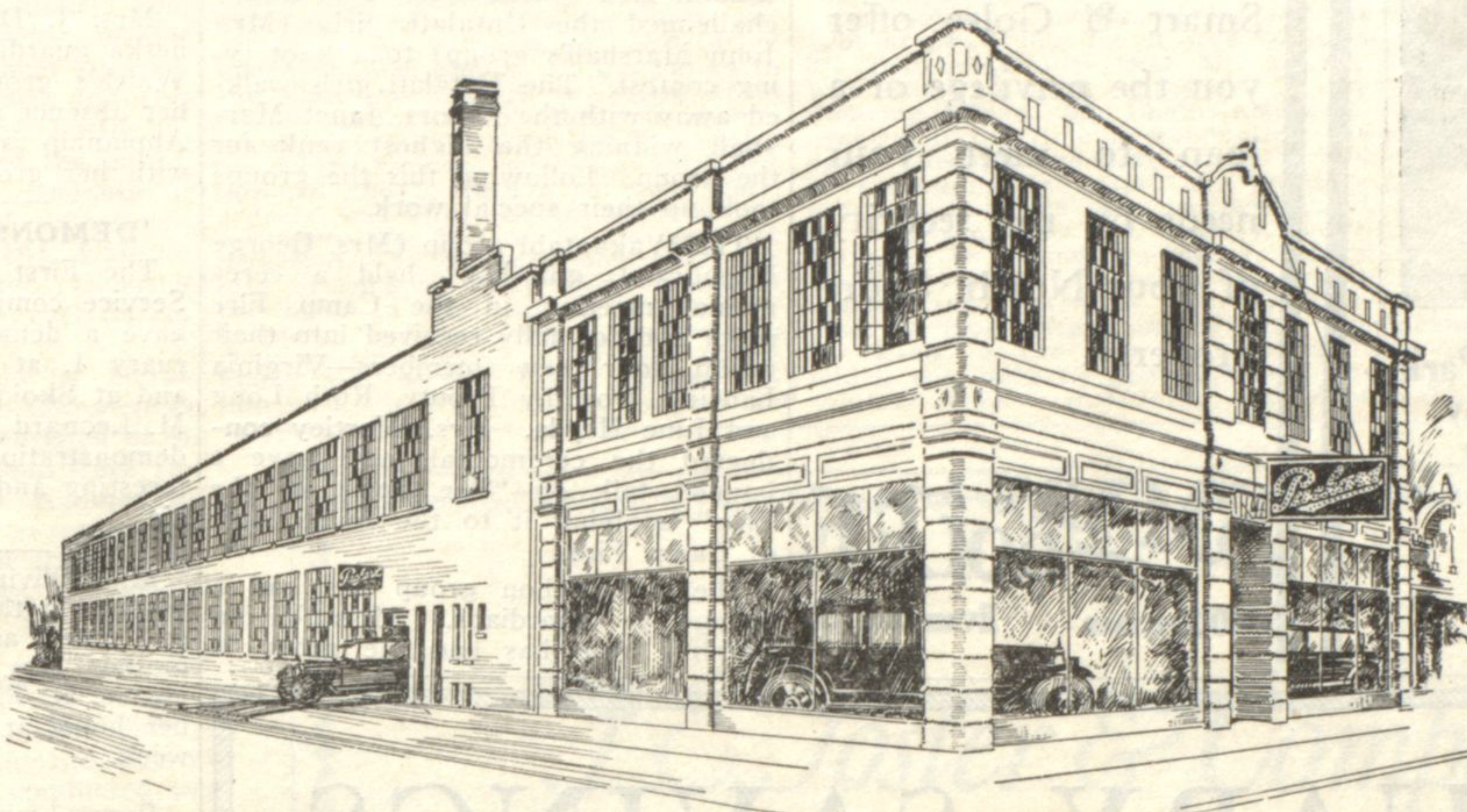


NORTH SHORE

PACKARD SALES & SERVICE BRANCH



Less than a year ago we moved into new quarters where our facilities for serving North Shore Packard owners would be greatly increased.

But the popularity of our new Sales and Service Station was so great that its equipment and space was almost at once taxed to the limit, and it became necessary to double the size of our building. The improvements having been completed, we are now ready to receive Packard owners on Packard ground once more. This is the largest motor-car sales and service building north of the loop. Here, for the con-

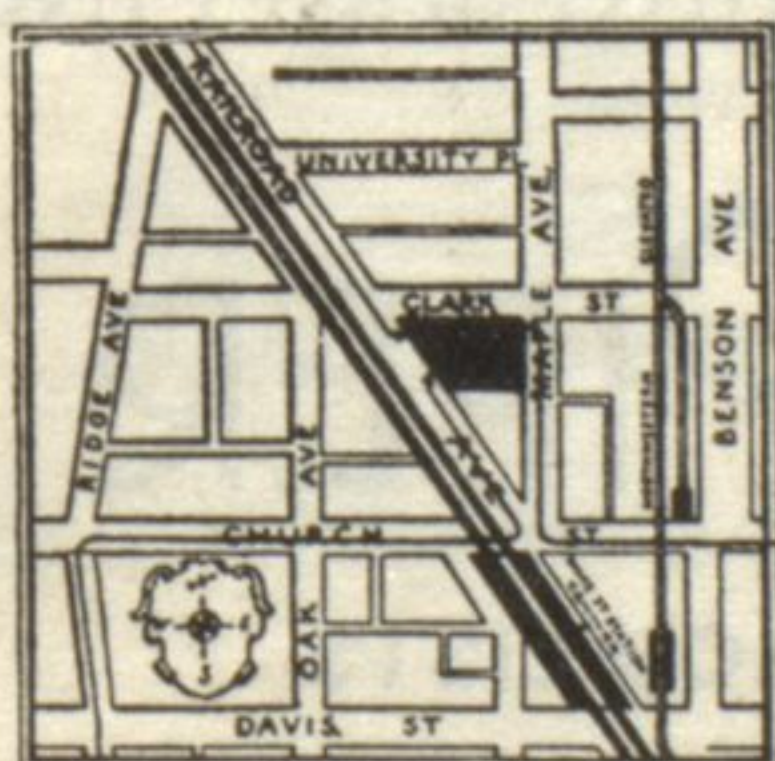
venience of the North Shore, is a complete Sales Department with a full line of Packard Sixes, Packard Eights and Packard Accessories on display.

And here, at Standardized Packard Charges, you can avail yourself of Packard Mechanical Service in all its branches.

You will find it convenient to leave your Packard here in the morning on your way to town and pick it up again in the evening, knowing that it has had expert attention at the hands of those who know it best.

PACKARD SALES & SERVICE

FROM RIDGE AVENUE—
If southbound, turn left at the viaduct
and down Railroad Avenue to Packard.
If northbound, turn east at Church
Street, under viaduct and north to plant.



FROM FOUNTAIN SQUARE,
EVANSTON—Proceed north on
Chicago Avenue to Church Street, west
on Church to Railroad Avenue, and
then north to the new Packard plant.

PACKARD MOTOR CAR COMPANY OF CHICAGO
Evanston Branch • 1735 East Railroad Avenue • Phone Greenleaf 1200