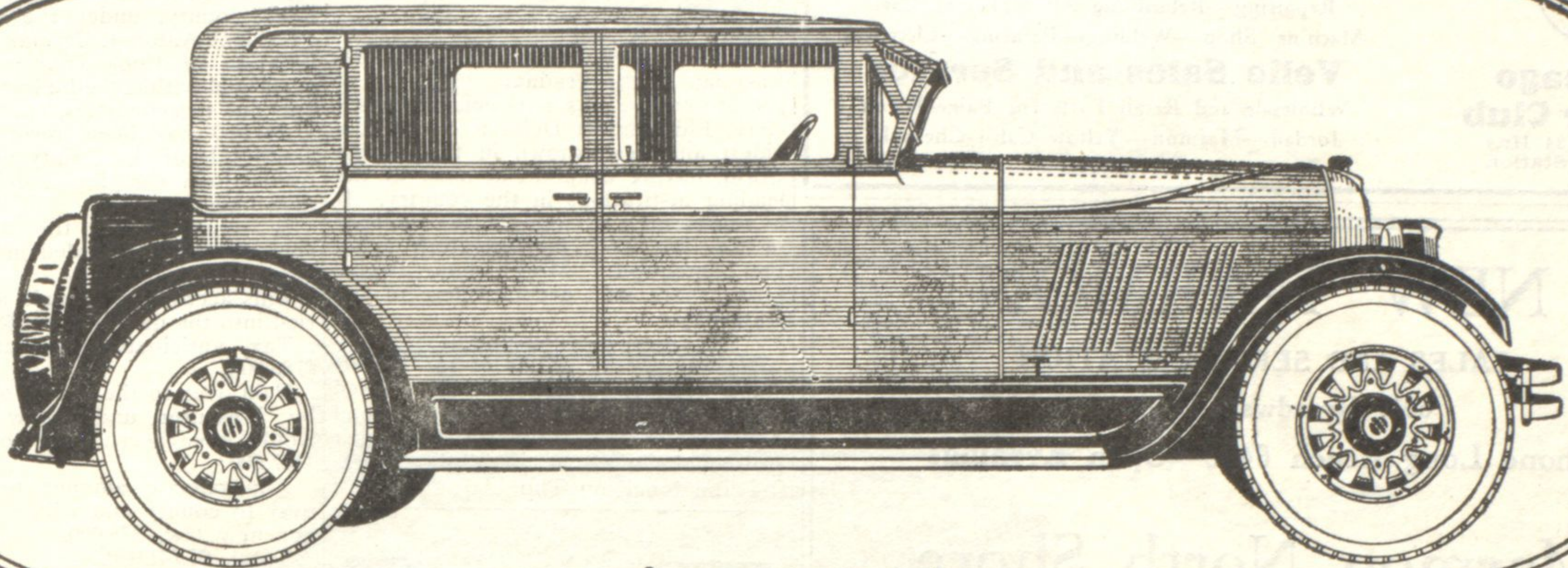


# STRAIGHT EIGHT



## \$1795

8-88 Brougham, 3¼" x 4½" 8-cylinder motor. Finished in latest two-tone lacquer.

# AUBURN

## EASIEST STEERING

Auburn brought steering up to date. For proof, don't simply drive one of the new Auburn cars, but drive a 1925 Auburn also. A year ago Auburn produced the ultimate in easy, smooth steering of balloon tires that others plan to "introduce" next year. No more arm fatigue. Parking is simplified. At all speeds the Auburn practically holds the road by itself. And it straightens up quickly after a turn. Drive all day at 50 miles an hour or more. No effort upon the part of the car to perform and no effort upon the part of the driver. Auburn challenges any other car to equal either its degree or quality of service under all conditions. Make your own comparisons and tests and if the Auburn does not sell itself, you will not be asked to buy.

8-88 Sedan \$1995; 8-88 Brougham \$1795; 8-88 Roadster \$1695; 8-88 Coupe \$1745; 6-66 Sedan \$1695; 6-66 Brougham \$1495; 6-66 Roadster \$1395; 6-66 Coupe \$1445; 4-44 Sedan \$1195; 4-44 Roadster \$1145; 4-44 Coupe \$1175. Freight and tax extra.

## BONDURANT MOTOR SALES

1027 DAVIS STREET, EVANSTON, PHONE GREENLEAF 1046

When at the National Automobile Show, visit our special exhibit at booths number 46 and 47

