

Two Daily Deliveries to North Suburbs

Lords

at Fountain Square

Special!



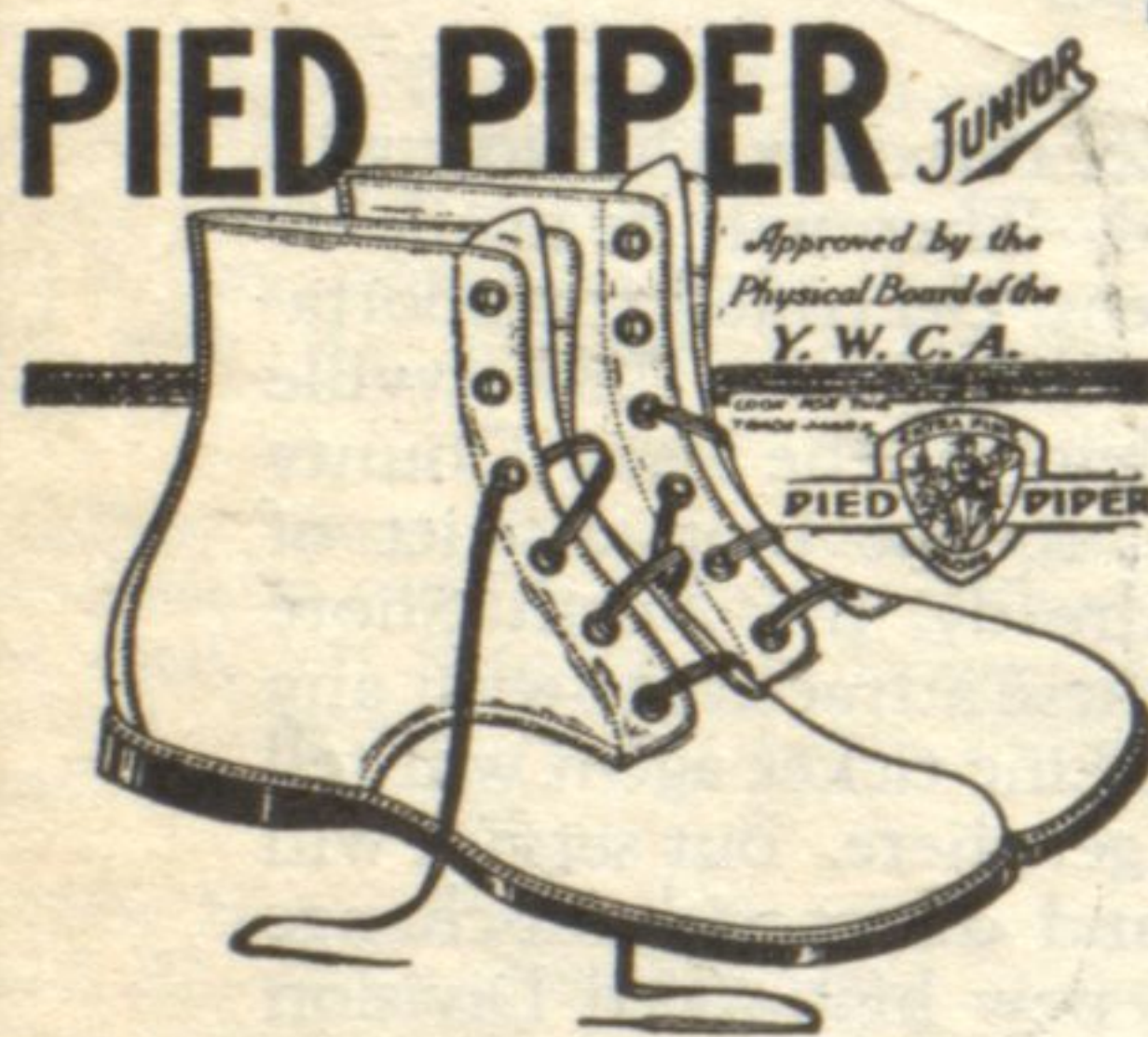
FLEECE RUBBER PADS

\$2.75 Value

\$1.75

Guaranteed "Everwear" waterproof crib sheets of soft fleeced rubber are firmly bound in tape with tape ties at each corner. They are 36" square and a regular \$2.75 value, special now at \$1.75. They will be much warmer for Baby in winter than unfleeced rubber.

Second Floor



For Children of All Ages

In the following weatherproof leathers:

- Smoked Elk Coffee Elk
- Brown Calf
- Patent Leather Golden Calf

- Sizes 3 to 5.....\$2.75
- Sizes 5 1/2 to 8..... 3.50
- Sizes 8 1/2 to 11.... 4.25
- Sizes 11 1/2 to 2..... 5.00

In Pied Piper Shoes, the delicate feet are trained to grow as nature intended.

First Floor

Minstrels on Way for Big Time at St. Joseph's Hall

Black-faced comedians, clever songsters, a tuneful chorus and the indispensable interlocutor, will all be on the stage when the curtain rises on "The Harmonies of 1925," the first minstrel show to be staged by the Young People's club of St. Joseph's parish. Sunday afternoon, October 11, a special matinee for the children will be held at 3 o'clock, when a gift will be presented to each child. The main performance will be given in the evening of the same day.

As a special feature of the show, the club is offering a comedy sketch entitled "The Filming of Uncle Tom's Cabin." This promises to be very funny and it alone is a splendid assurance of a very enjoyable evening.

The Rev. Joseph Rubey is the director of the show. George Arns will be at the piano during the performance.

Find Diphtheria on Rise in Illinois This Season

Diphtheria prevalence has doubled in Illinois since September 1, according to reports made public this week by Dr. Isaac D. Rawlings, state health director. Not only that but the incidence of this disease is likely to increase before it begins to decline, Dr. Rawlings predicts. During the last week in September, 100 cases were registered against 47 during the first week of the same month.

"Diphtheria season has struck Illinois with a two-fold increase in prevalence of the disease since August 31," said Dr. Rawlings. "Cases are now being reported at the rate of 100 per week or 14 per day. This is the highest incidence since last April and is double that for the average in August. It is not unusual, however, for this time of the year.

"We may expect an even greater rise in diphtheria prevalence before it begins to decline. From now until late winter an average of from 150 to 200 cases per week will be reported if the incidence runs true to form, barring an epidemic of serious proportions.

"Children under 12 years of age are the most likely victims of diphtheria."

BUY ELECTRIC EQUIPMENT

Village Manager C. C. Schultz was authorized by the Village board of trustees Tuesday evening to purchase additional electric lighting equipment to the amount of approximately \$1,600 from A. M. Ryckoff, the contractor who installed the new system. This material will be used for the maintenance of the lighting system.

Mr. and Mrs. W. J. Schlacks and family of 808 Center street, has returned home from Palisades Park, Mich.

BOURNIQUE'S

DANCING — DEPARTMENT

Private classes personally conducted by

ALVAR L. BOURNIQUE
Chicago Evanston Winnetka

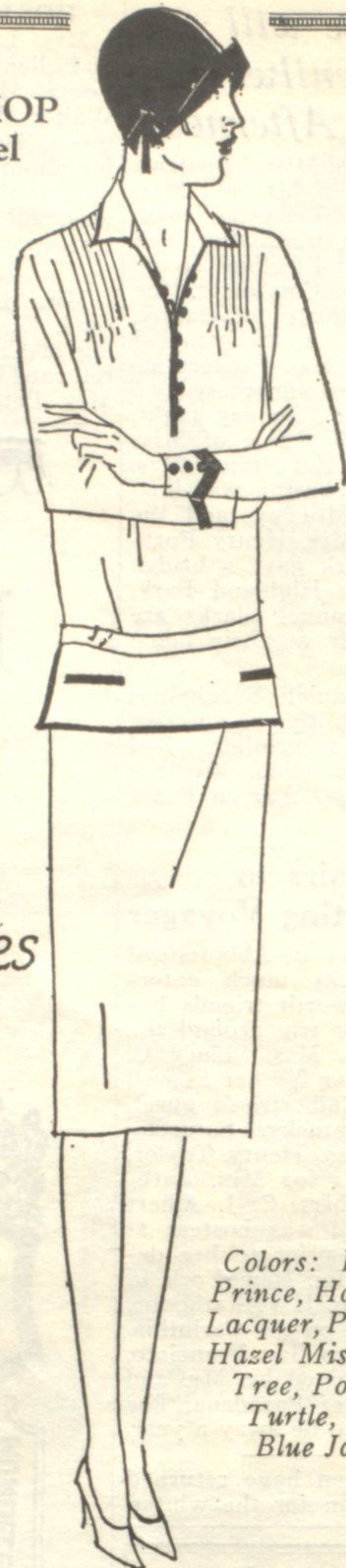
Classes Not Open To Public

New families are eligible to membership when introduced by patrons, or, when presenting satisfactory references.

Classes Open Beginning the Week of October 19

Address all communications to Office and Studio: 1134 N. Dearborn St., Chicago

EVANSTON SHOP
Orrington Hotel



By Betty Wales

Colors: Black Prince, Harvest, Lacquer, Pelican, Hazel Mist, Fir Tree, Poppy, Turtle, or Blue Jay.

Featuring the Fraetone Twosome Frock

* \$25

Excellent at the club, for golf, on the campus or in the business house. This smart frock will retain its distinctive lines and hold its freshness long after frocks of other materials have been relegated to "rainy" day usage. Women's and Misses' sizes.

*A new, pure worsted fabric which does not wrinkle, shrink nor stretch.

Betty Wales Shops

65-67 E. MADISON ST. - WILSON at SHERIDAN
Evanston Shop in The Orrington Hotel