

OPEN NILES 'L' LINE SATURDAY

Fare Rate to be Same as For Evanston

Regular service on the new Niles Center division of the Chicago Rapid Transit company will be opened this Saturday afternoon, according to an announcement made by officials of the company.

Special trains of officials of the various towns served, business men's organizations and officials of the companies, will be operated from Howard street station of the Northwestern elevated to Dempster street terminal where special inauguration ceremonies will be held. The first special will leave Howard street at 2 o'clock.

Upon arrival of the special trains at Dempster street, arrangements are being made for talks by Mayor Harry Pearsons of Evanston, Mayor John Brown of Niles Center and Bernard J. Fallon, vice-president of the Chicago Rapid Transit company.

Seven Cent Fare

Service over the Niles Center division will be operated at frequent intervals between Howard and Dempster streets and the fare will be the same as the present Evanston fare.

The new railroad was built at a cost of more than \$3,000,000 by the Chicago, North Shore and Milwaukee railroad, and is owned by that company, the "L" trains being operated over the line under a trackage agreement.

The road runs from Howard street on a line a quarter of a mile north of that street west to Cicero avenue, thence north to Niles Center, a total distance of five miles. It consists of every type of modern railroad construction, subways, elevated and surface tracks.

Have Eight Stations

There are eight stations on the new line, Ridge, Asbury and Dodge avenues in Evanston and Crawford and Kostner avenues, Oakton, Main and Dempster street in Niles Center. Two of these are above the tracks, one below, and the balance on the surface. The stations are of the most modern type of steel and brick construction with tile roofs and terra cotta trimming.

Overhead trolley construction on the west end of the new railroad also presents an advance with steel bridge-work supports and catenary suspension of the trolley wire, providing for greater safety and high speed operation.

Within its five mile length the Niles Center division passes over two railroads, under another, and over the new McCormick highway and over the drainage canal. Approximately ten months elapsed from the time of the official beginning of work and its completion.

DISASTER FINDS RED CROSS "ON THE JOB"

At 2:30 o'clock on March 18, the tornado struck Murphysboro, Ill.

At 4 o'clock, three Red Cross trains left St. Louis, with doctors, nurses, trained workers and supplies. In charge was Henry M. Baker, Red Cross national director of disaster relief, experienced in 87 floods, tornadoes and tidal waves.

At 8 o'clock the 22 cars were sidetracked at Murphysboro and as doctors and nurses started to relieve the suffering, canteen workers began handing out hot coffee and food.

Thomas M. Temple, executive secretary of the Chicago Chapter, awaited orders from the St. Louis Red Cross. He waited in confidence knowing that Red Cross trained nurses and workers were on call and tin-lined boxes of equipment were packed for shipment.

At noon, March 19, came telegrams "Do not send personnel nor supplies."

At 1 a. m. March 20, Henry M. Baker had visited every Illinois town and village in the disaster zone and had the relief organizations set up. The Indianapolis Red Cross, anticipating the need, had sent by airplane a large supply of anti-tetanus.

The American Red Cross has now taken over the entire medical work in the disaster zone. A unit of Chicago doctors left Chicago Monday night, the Illinois Central furnishing transportation free.

That such an organization is in readiness for immediate action is due to your membership in the Red Cross. The special contributions are used entirely for relief work and rehabilitation. The Red Cross is a beneficiary in the Community Chest Drive.

Of Interest Only to Our Advertisers

Bigness has value.

If you tend to disbelieve this statement, call to mind the two-page spread of the Hubbard Woods Lumber and Coal Company in last week's papers. As you were turning the pages of LIFE TALK, or NEWS for the first time, and your eye caught sight of this big double page display, didn't you delay long enough to read the ad itself?

Big things by their size catch the eye. What are the things in the world that are most noticed? The pyramids, the Colossus of Rhodes, the Grand Canyon, Rockefeller's bank account, the sun, and other large objects.

If you want to get attention, use a full page!

Here is the Roll to Date

Hubbard Wds. Lumber & Coal Co.	3
Lake Co. Construction Co.	2
Winnetka Coal-Lumber Co.	2
Wilmette Shoe Store	1
Pierce Radio Co.	1
Meyer Coal & Material Co.	1
R. H. Schell & Co.	1
John Evans Apt. Homes	1
A. Starr Best	1
S. Rosenbaum Co.	1
Kashian Bros.	1
Wolff-Griffis	1
Hanson Motor Co.	1

When the Light Turns Green --

That's when the driver of a CHRYSLER gets a "Kick Outa" the kick in his **CHRYSLER.**

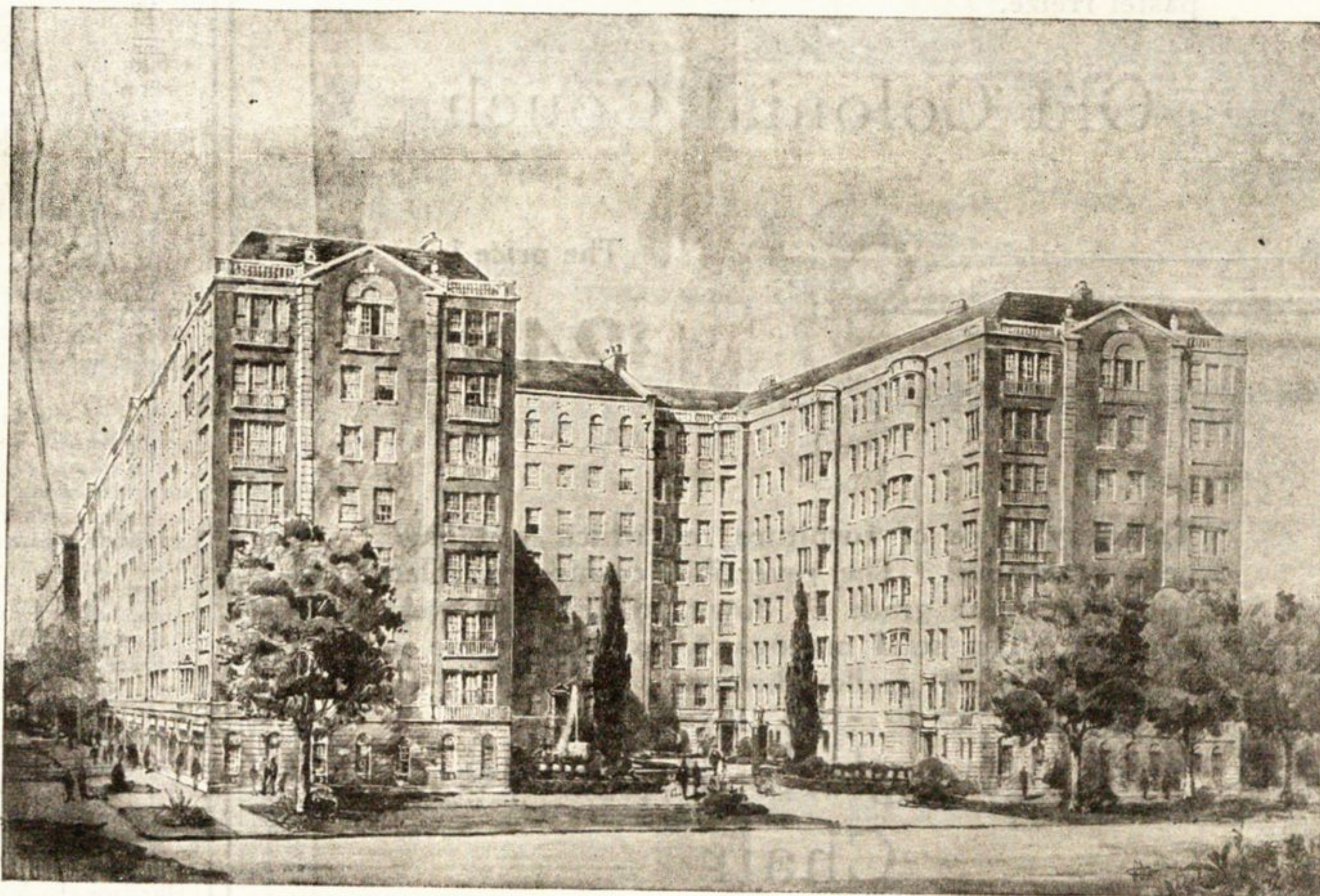


Evanston Motor Sales

W. D. Reagan, Mgr.

1017 Davis Street Phone Univ. 2277

CHRYSLER



Invest and Live in this Substantial Building

LOCATION—1600 Hinman Avenue—in Evanston's finest residential section, close to the lake, parks, university, clubs, and rapid transportation.

Finest fire proof construction. All modern conveniences. Spacious—luxurious! An elegant, economical, private apartment residence exclusively for discriminating people.

Six rooms, three baths, \$11,720 investment, maximum monthly assessment, \$168.48, of which \$73.25 is

retirement of incumbrance. Assessments decrease each year. Savings over renting show 20% return on investment.

Beautiful Garden Court larger than average residence lot. Six passenger, five service elevators. All elevators extend to garage level. Wood burning fireplaces, mechanical refrigeration, etc.

Office open daily and evenings. Investigate! Telephone Greenleaf 501 or write for literature.

The **JOHN EVANS** Apartment Homes
CO-OPERATIVELY OWNED

EVANSTON'S MOST DISTINCTIVE DWELLING PLACE

Buy Your

NASH

from

Ray Metz

North Shore Nash Distributor

1035 Davis Street
EVANSTON

"We Build on Service"