

Roads Good Despite Cold Snap

(Report by Chicago Motor Club)

General

A material change in road conditions has taken place recently due to the fact that colder weather is setting in, and in the Middle west where rain and snow fell last week, the dirt roads are frozen, somewhat rough in places. At this writing indications are for continued cold throughout the Middle west and northwest.

Illinois

The four-mile detour on III-10 east of Riverton is rough but easily passable.

The pavement on 95th street between Kean avenue and Archer avenue is now open. Care should be taken approaching Archer avenue, as teams are clearing the surface and the curve is slippery.

III-2—Scheduled to be completely open from Mendota to Hayworth, November 26, will not be opened until next week. This route is now open from Clinton south through Decatur, Ramsey, Sandoval and Duquoin to Cario.

III-3 is now open from Milan to Aledo, Goodhope to Industry, scheduled to be open from Jacksonville to Whitehall November 27; open from New Providence to McClusky.

III-8—Detour eliminated between Watseka and Gilman.

III-16—Open between Mattoon and Charleston except one small detour at a bridge.

III-18—Lamoille to Princeton to open November 27.

III-25—Open except one detour at a bridge between Mattoon and Effingham.

CAUTION—Care should be taken to comply with the speed laws on III-2 in passing through Central City; on III-3 through Braidwood and through all towns on III-25.

Indiana

Ind.-1—Detour on account of construction south of Peru, detour about three miles south of intersection of Ind.-4, passing through Dudleytown; detour just north of New Albany.

Ind.-3—Detour eliminated west of Brazil.

Ind.-4—One mile of earth road between Dugger and Linton; detour over country road through Dugger in wet weather. Detour just west of Seymour account of bridge construction.

Ind.—Construction between Looggotee and West Baden, detour over state roads No. 41 and No. 22.

Ind.-10—Detour lifted at Little Pigeon Creek bridge; closed between Princeton and a point two miles north of Hazelton. Traffic can use White river bridge; use pavement about November 28. Closed at four miles north of Veversburg account of paving; detour to east, returning to Ind.-10 at seven miles south of Attica. Bridge out one mile north of Marshall; detour is fair. Detour west of Attica through Williamsport account of Wabash railroad bridge crossing. Detour east at one mile north of Carbondale account of bridge construction.

Ind.-13—Detour one mile north of Montpelier account of bridge out over Salamonie river, detour around bridge construction just south of Bluffton. Roadside run-arounds at bridge projects between Ossian and Bluffton.

Ind.-16—Detour eliminated and road open for traffic from Little Pigeon Creek to a point two and one-half miles east of junction of roads No. 16 and No. 18. New location not passable between Lincoln City to a point four miles west of St. Meinrad. Traffic between St. Meinrad and Dole use county gravel road. Construction between St. Meinrad and Leavenworth.

Michigan

General condition same as last week; roads frozen but in good condition; some snow.

M-10—Detour eliminated between Pinckney and Linwood.

M-13—Detour Kalamazoo and Plainwell account of construction.

M-16—Detour eliminated and road open between Lansing and Portland. Detour eliminated at Novi.

M-17—Detour south at Parma to Concord then use M-60 into Jackson.

M-18—Detour between Prudenville and Skeels account of construction.

M-29—Detour eliminated and road open between Lansing and Charlotte.

M-32—Detour between Hillman and Atlanta account of construction.

M-64—Detour eliminated between Sandusky and Carsonville; detour between Merrill and Hemlock.

Wisconsin

General condition of dirt roads good; paved roads slippery account of snow. Detours same as last week.

Minnesota

Truck highways in good condition and, barring unexpected weather, roads will be good after the winter freeze-up.

Minn.-3—Fair detour out of LaCrescent, good through Winona to St. Paul-Minneapolis, including Lake City—Redwing detours; paved on through St. Cloud; good over remainder of route including detour into Sauk Center.

Minn.-9—Good, except over fair stretch of loose gravel west of Rushford and fair section between Preston and Spring Valley.

Minn.-10—Fair detour between Herman and Wheaton.

Iowa

General Conditions—Highways are in good condition generally, with very little dust, but some roughness outside the track on roads that have not been

dragged. Where dragged, the roads are excellent. Side roads are rough in places.

Missouri

General Conditions—Roads generally improved over last week account fair weather.

No. 3—Detour from Carrolltown to Dowdry in fair condition.

No. 6—Detour from St. Joseph to Bayfield in good condition.

No. 8—Detour from St. Joseph to Stewartville in good condition.

No. 27—Detour from Barnard to Maryville is good.

Eastern

O-31—Toledo to Maumee pavement completed and open for traffic.

Pennsylvania roads in good condition. Massachusetts roads reported good. Connecticut roads around Hartford in excellent condition.

Maryland—Detours on Md.-24 and Md.-27 lifted.

Considerable construction work being done by State and County commissions but most detours are good and all passable.

Southern

Route from Louisville, Ky., to Mammoth Cave, via Westpoint, Elizabethtown and Cave City over asphalt and stone roads. Detour between West Point and Camp Knox is rough stone, but passable. Detour between Camp Knox and Elizabethtown is dirt and impassable when wet. Late inquiry should be made at the Louisville Automobile Club and, in the event of rain, it is advisable to use the train. It is anticipated that by December 31 the dirt detour from Camp Knox to Elizabethtown will be lifted, giving a hard road the entire distance to the cave.

The east Dixie highway on the route to Florida between Berea and Barbourville is bad, because of heavy rains the past two weeks. Tourists are advised to provide themselves with chains before starting this trip as they may be unable to secure them if needed in the small towns along the route.

Road from Tampa to Miami via Okeechobee City and Connors highway very dry account lack of rain. Best to go via Kissimmee and Melbourne. Weather conditions alone, however, cause this change.

Gandy bridge open Tampa to St. Petersburg.

All roads in Louisiana reported in good condition.

Western

General Conditions—There has been some snow in the mountain region along the National Old trails route in the north, and a general light rain, which will tend to improve road conditions somewhat, in the central part of Arizona. The mountain roads will be somewhat muddy and slippery on account of snow and rain much of the time from now on.

Parker, Ehrenberg and Lee's Ferries open; Gila river crossing at Gillespie Dam open; Sacaton crossing on the Gila good.

Custer Battlefield Highway—Light snow and cold weather have made trav-

eling a little unpleasant but the highways through South Dakota are 90 per cent passable.

In Wyoming snow has fallen six inches in some sections, but cars are going through. The majority of highways in Montana are still open. The Cannon Ball highway open but not advisable at this time. Yellowstone trail through mountains still open, but closing depends upon weather conditions. Panhandle route through Texas is rough but passable.

Raton Pass on National Old Trails reported in excellent condition.

Oklahoma highways reported in good condition.

The Lincoln highway west from Lincoln is fair to good; west of Cheyenne fair, with some rough stretches.

Gore road is still open but snow may close it at any time.

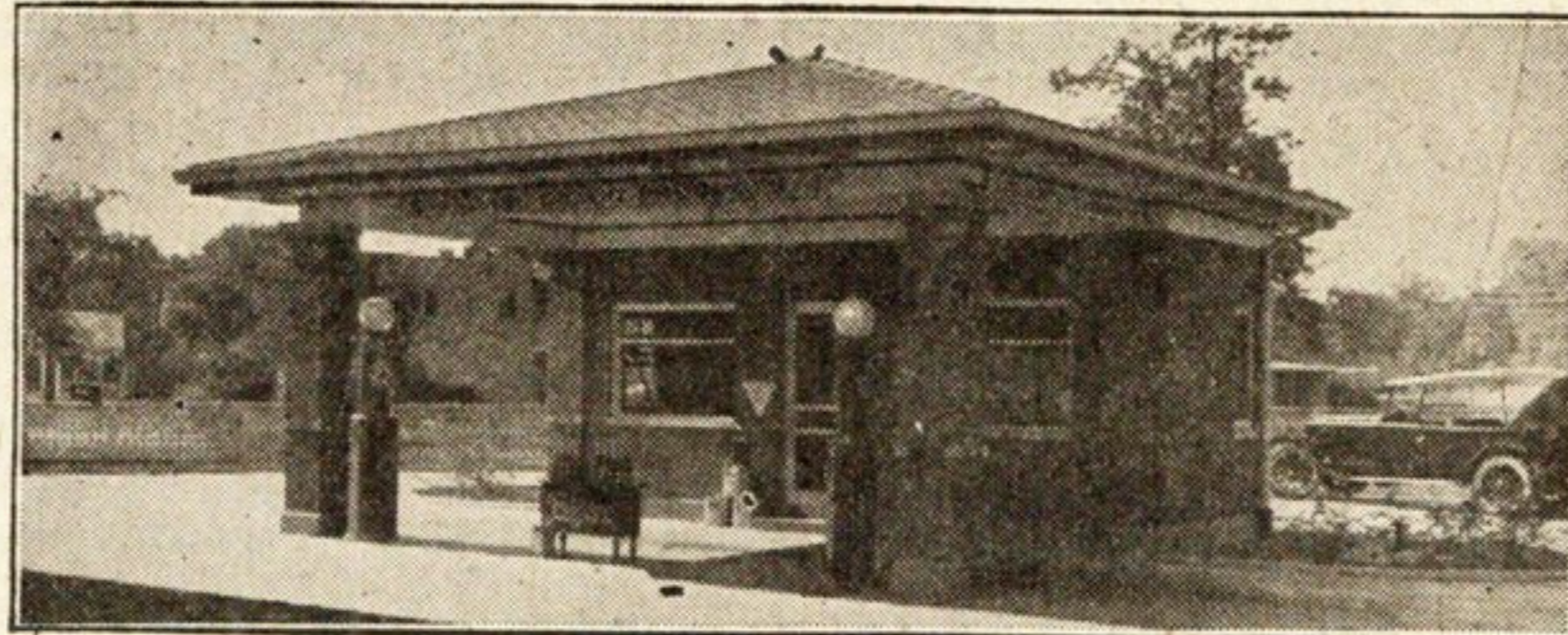
HOOT, MON!

Scotch plaid, for several seasons a popular Parisian mode in cloth patterns, is now being used to decorate European automobiles. Several expensive cars have been seen on the streets of Paris lately painted with plaid designs.

Spoked Wheels Known in Times of Ancient Egypt

"The recent discovery in the tomb of the Egyptian ruler, King Tutankhamen, of chariots equipped with spoked wheels prove the ancient origin of wheel work," says the Firestone New Service.

While these historical vehicles were equipped with tires, they were not of the rubber variety, however, but massive iron bands that must have made shock absorbers a desirable thing for those who used such conveyances.



This gas and oiling station is just across the street from our garage, and is under our management.

Winter Comforts

You should be as comfortable driving your machine in cold weather as you are in your home. You probably need one or more of the following "Winter Comforts."

- A Temme Heater
- Pines Winter Front
- Weed DeLuxe Chains
- Automatic Windshield Wiper

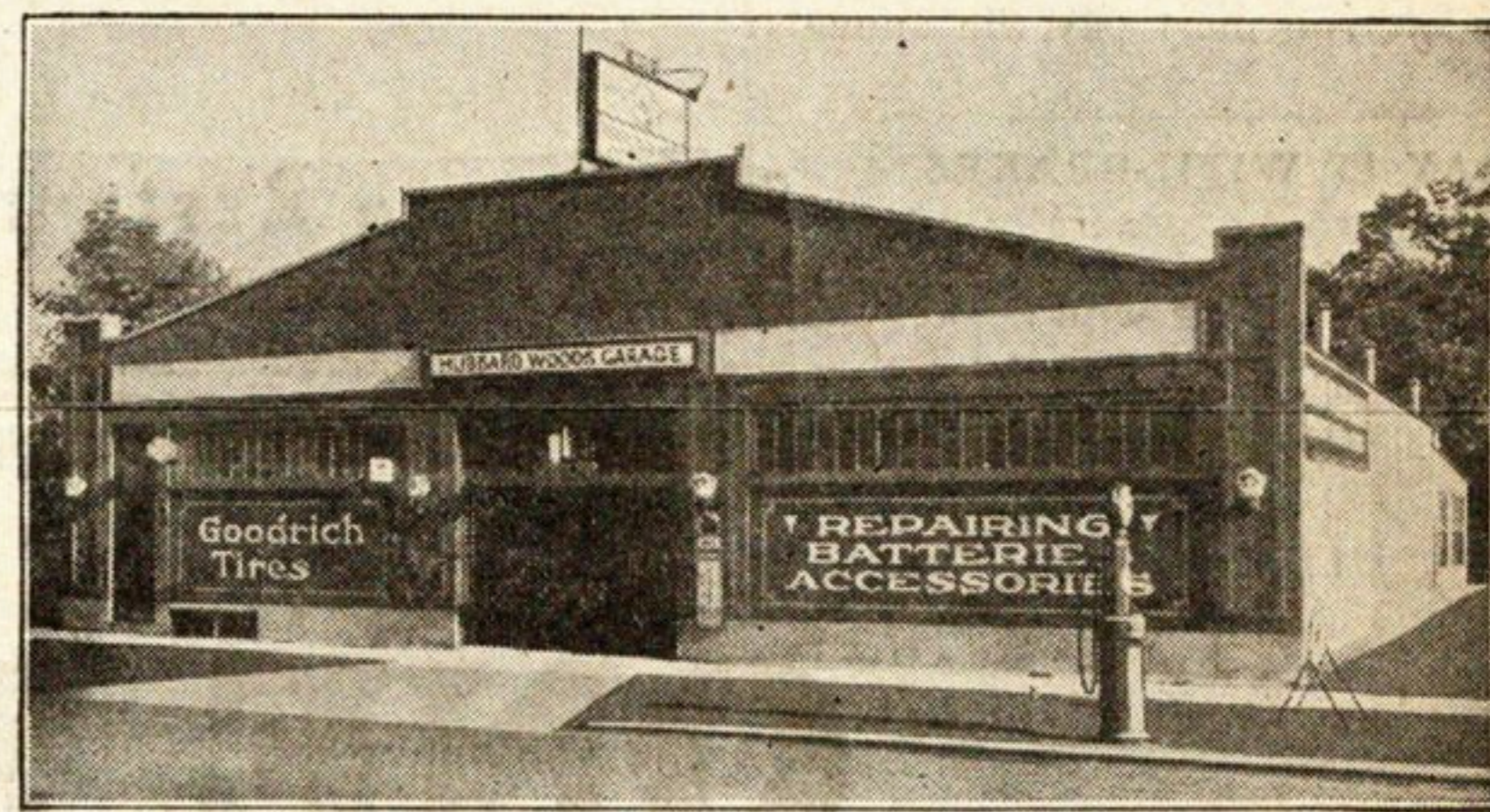
- Fyrac Spot Light
- A Good Spare Tire (Silvertown)
- Alcohol
- Lighter Oil and Grease

Better drive in at once and let us equip your car with whatever you need to make your winter driving comfortable and safe.

HUBBARD WOODS GARAGE

1010 Tower Road

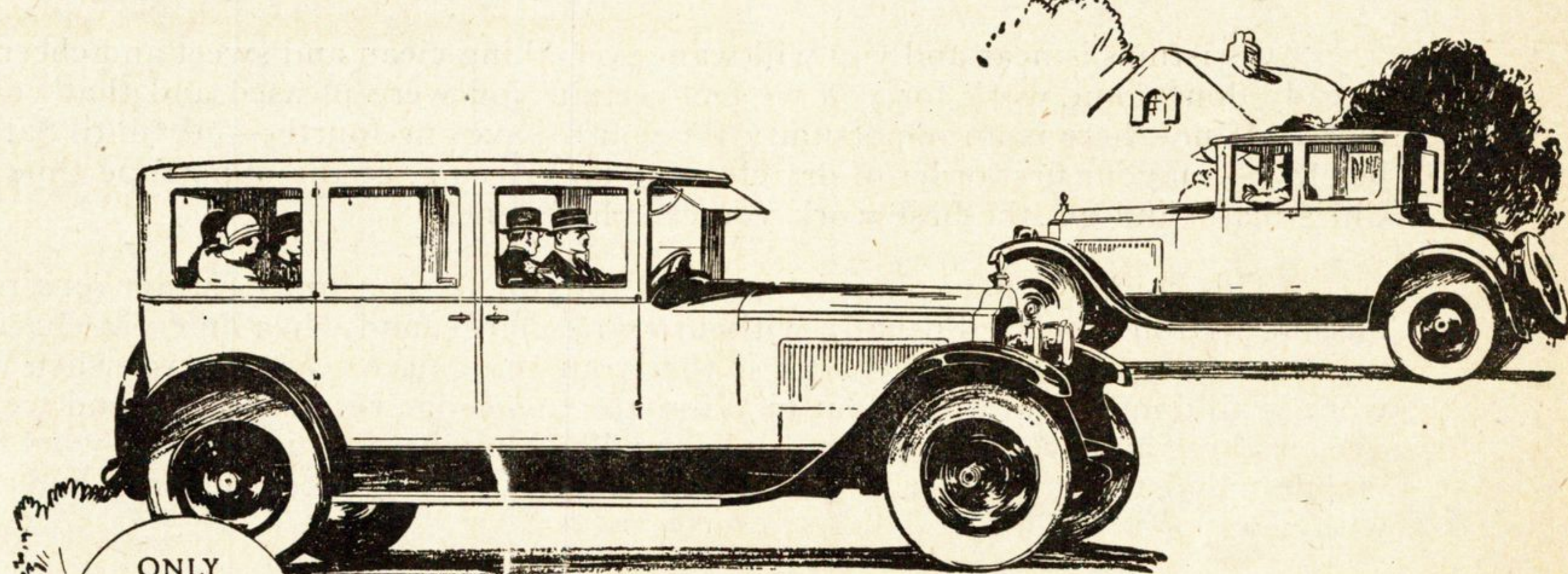
WINNETKA, ILLINOIS



"Service With A Smile."

PHONES:
WINNETKA
617-1834

NEVER LOSES DISTINCTION



ONLY
PACKARD
CAN BUILD A
PACKARD

ASK
THE MAN
WHO OWNS
ONE

The Packard Six represents every inherited tradition of Packard standards—carefully considered design, the best possible materials, the most painstaking workmanship in the industry.

It represents, also, advancements in engineering ideas that are the fruit of Packard's 25 years of experience.

These cars are striking examples of that exclusive quality that never permits a

Packard to lose its peculiar distinction even ten years after purchase.

After you have examined and ridden in the Six you will agree that only Packard can build a Packard.

And if you ask any of the more than 40,000 owners of the Six they will tell you that their own facts and figures prove there is neither wisdom nor economy in paying less than the Packard price.

Packard Motor Car Company of Chicago
1629 Orrington Ave. EVANSTON BRANCH Phone University 710

PACKARD SIX

Packard Six and Packard Eight are both furnished in ten body types, open and enclosed. Packard's extremely liberal time-payment plan makes possible the immediate enjoyment of a Packard—purchasing out of income instead of capital.