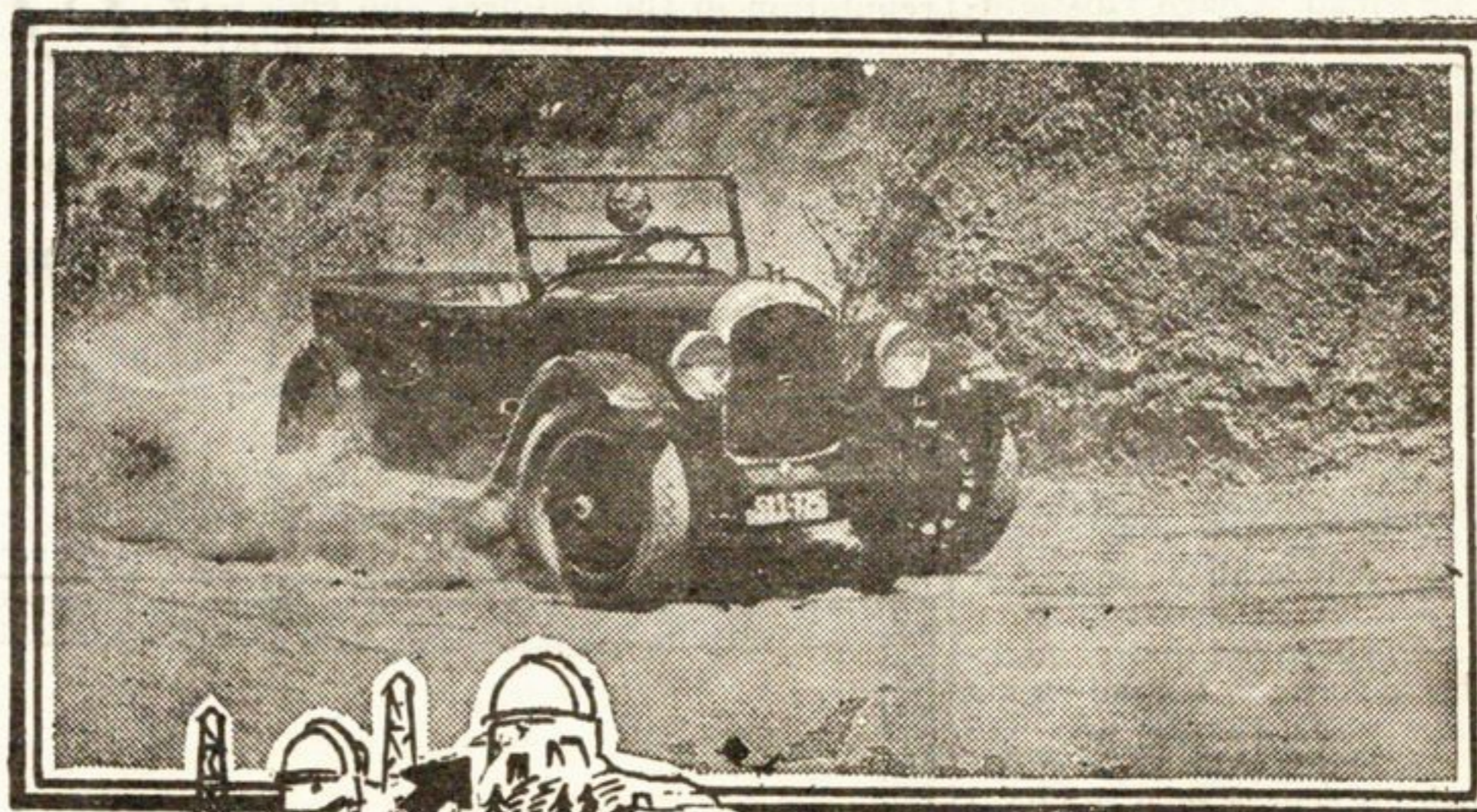
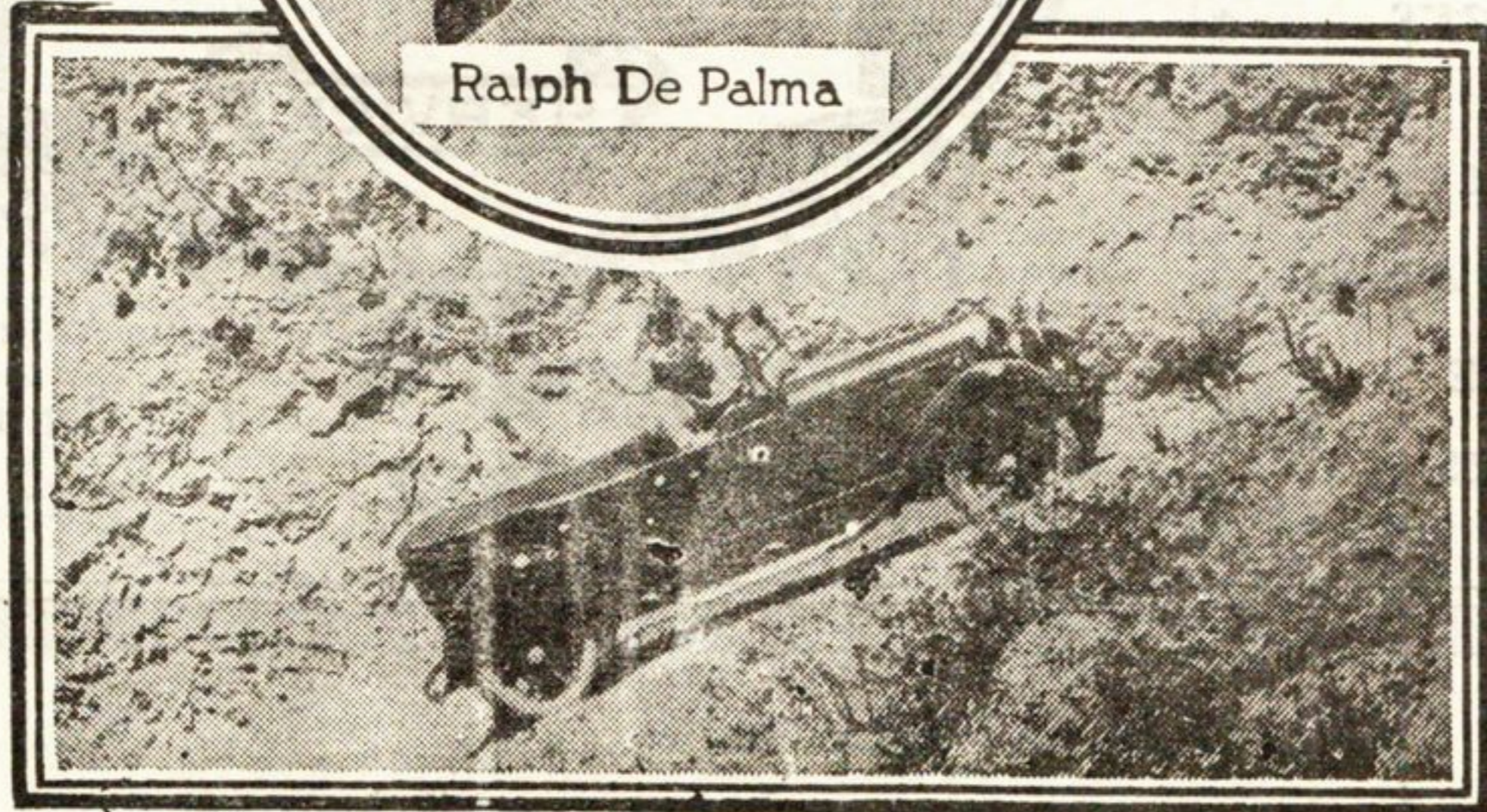


Ralph De Palma



Chrysler Six Sets New Mt. Wilson Record

The Mt. Wilson Climb

The peak of Mt. Wilson, near Los Angeles, California, is 5886 feet above sea level. The elevation at the Toll Gate at the mountain's base is 1250, making a net climb of 4636 feet from the Toll Gate to the famous Government Mt. Wilson observatory at the top.

The distance by road is 9½ miles, and there are 144 sharp curves and dangerous turns. The approximate average grade is 10%. Maximum grade is 16%.

Best previous stock car record—27 minutes, 51.66 seconds.

Best previous non-stock car record—26 minutes, 56 seconds.

Chrysler Six strictly stock car record—25 minutes, 48.85 seconds.

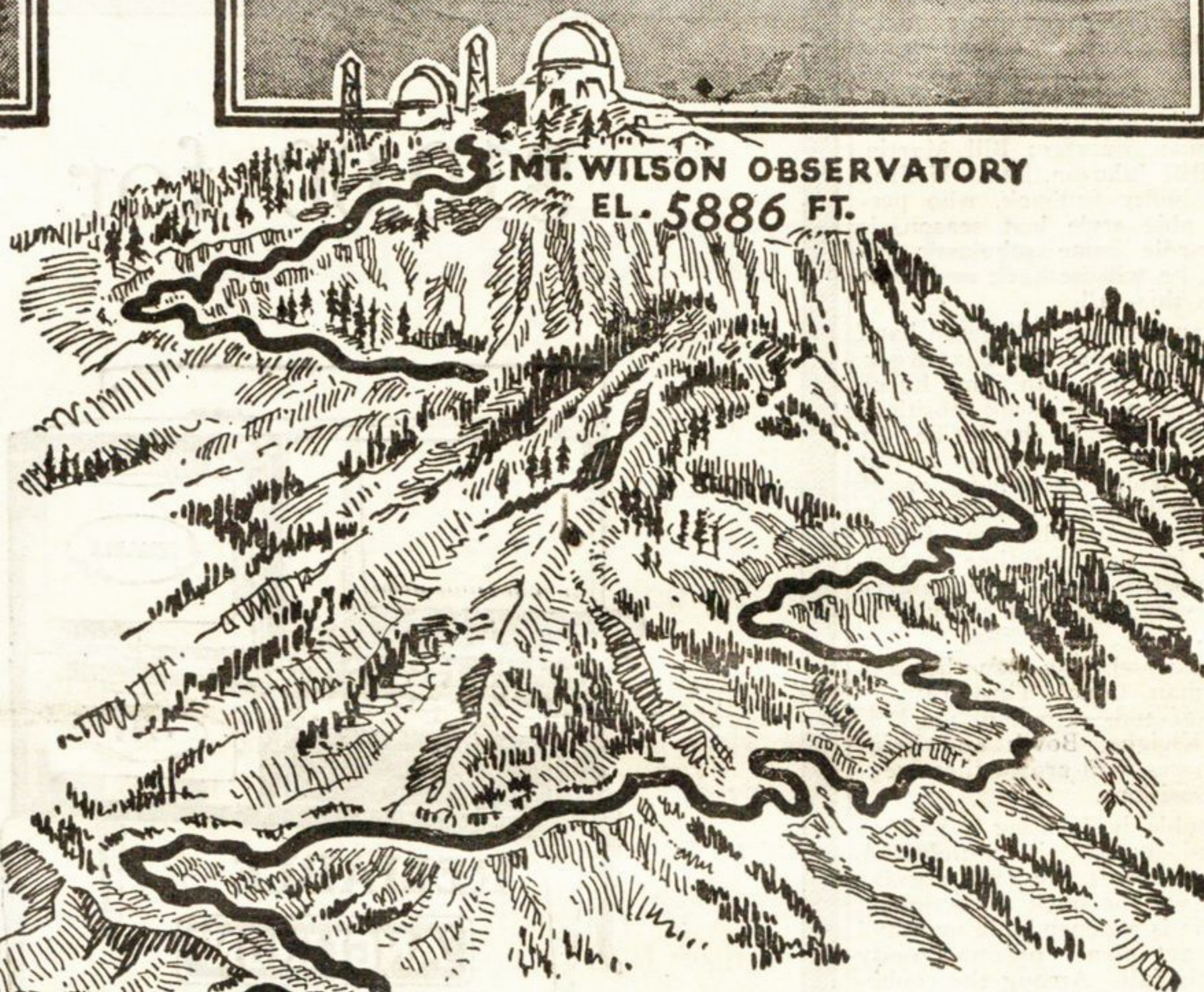
Prize—Los Angeles Express Trophy.

Observers and timers—4 Los Angeles newspaper men.

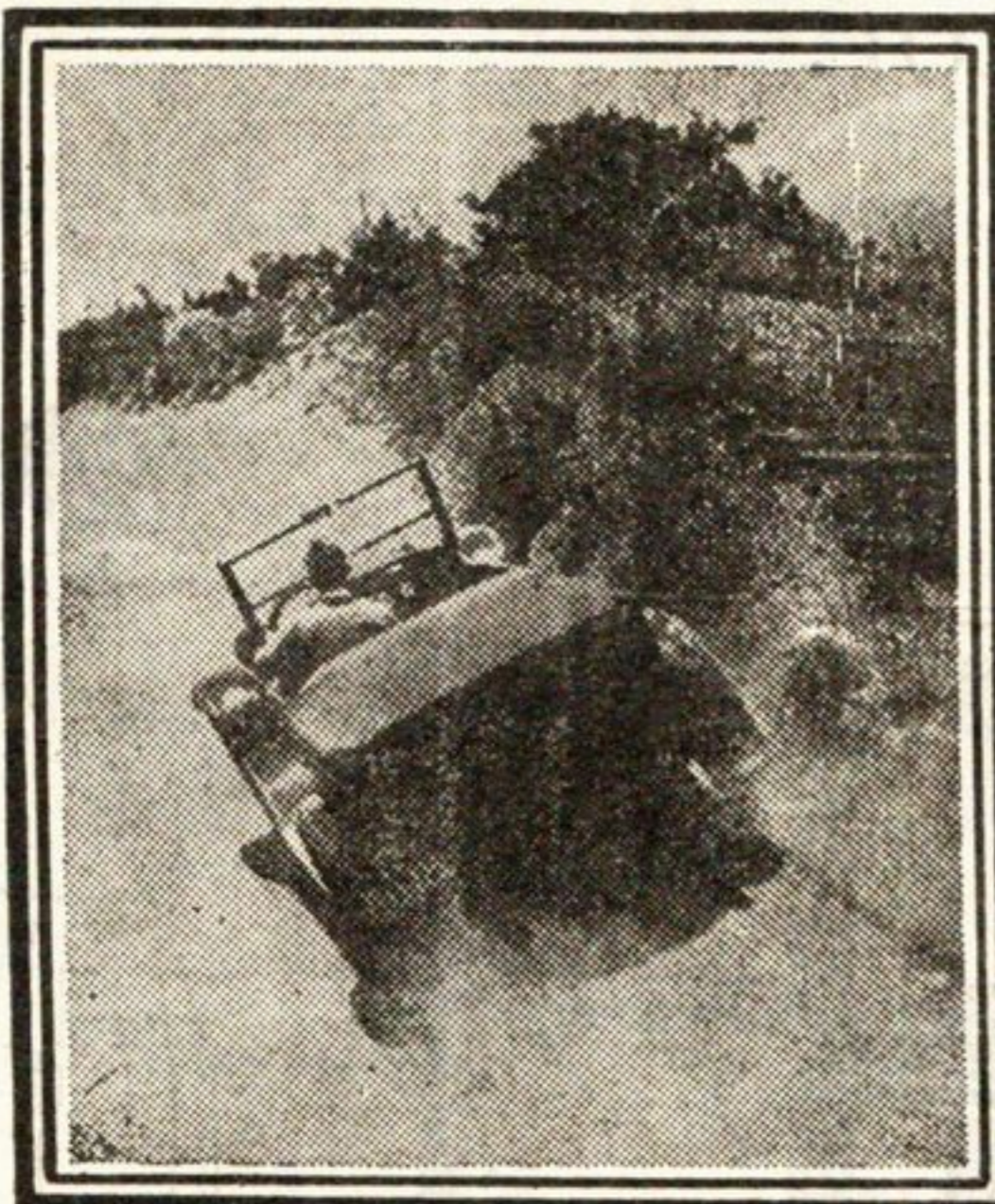
Driver—Ralph De Palma.

Date—Wednesday, July 16, 1924.

Road conditions—Bad, due to dry season and heavy travel.



MT. WILSON OBSERVATORY
EL. 5886 FT.



Chrysler Six Beats Record By More Than Two Minutes

The Chrysler Six, strictly stock car, record on the famous Mt. Wilson climb is an amazing feat of power and speed on a steep and dangerous road.

Yet all who saw Ralph De Palma beat all former Mt. Wilson records by 2 minutes, 2.81 seconds in a stock Chrysler Touring car say the phenomenal Chrysler abilities were not taxed.

Think of it! In 25¾ minutes a stock Chrysler Six climbed approximately 6 times the height of New York's famous Woolworth Tower, over 9½ miles of narrow, twisting road—and did it with ease!

Three features made the Chrysler achievement easy. One was the tremendous surge of power that literally swept the Chrysler up those heart-breaking grades.

A second was the gripping hold of the four-wheel hydraulic brakes when the

Chrysler took the curves.

The third was the perfectly balanced design, the low center of gravity resulting from the supremacy of Chrysler engineering.

No swaying, sliding or skidding on the turns; just in and out and gone like a flash. The tires seemed to cling to the road like a flanged wheel to a steel rail.

De Palma says it wasn't hard to break the Mt. Wilson record—with a Chrysler.

Sixty-eight horse-power in a compact—low swung—easily handled car. Riding ease and stability to match such power. Brakes to curb it to safety. Cooling to stand the test of nearly ten miles of full-throttle pulling.

Ask us to show you the marvelous things the Chrysler Six will do. A Chrysler Six demonstration will change all of your former ideas of supreme performance.



EL. 1250 FT.

START MT. WILSON TOLL HOUSE

Evanston Motor Sales

1015-17 Davis Street

Branch of Main Store at Michigan Ave. and 25th St.

Telephone University 2277