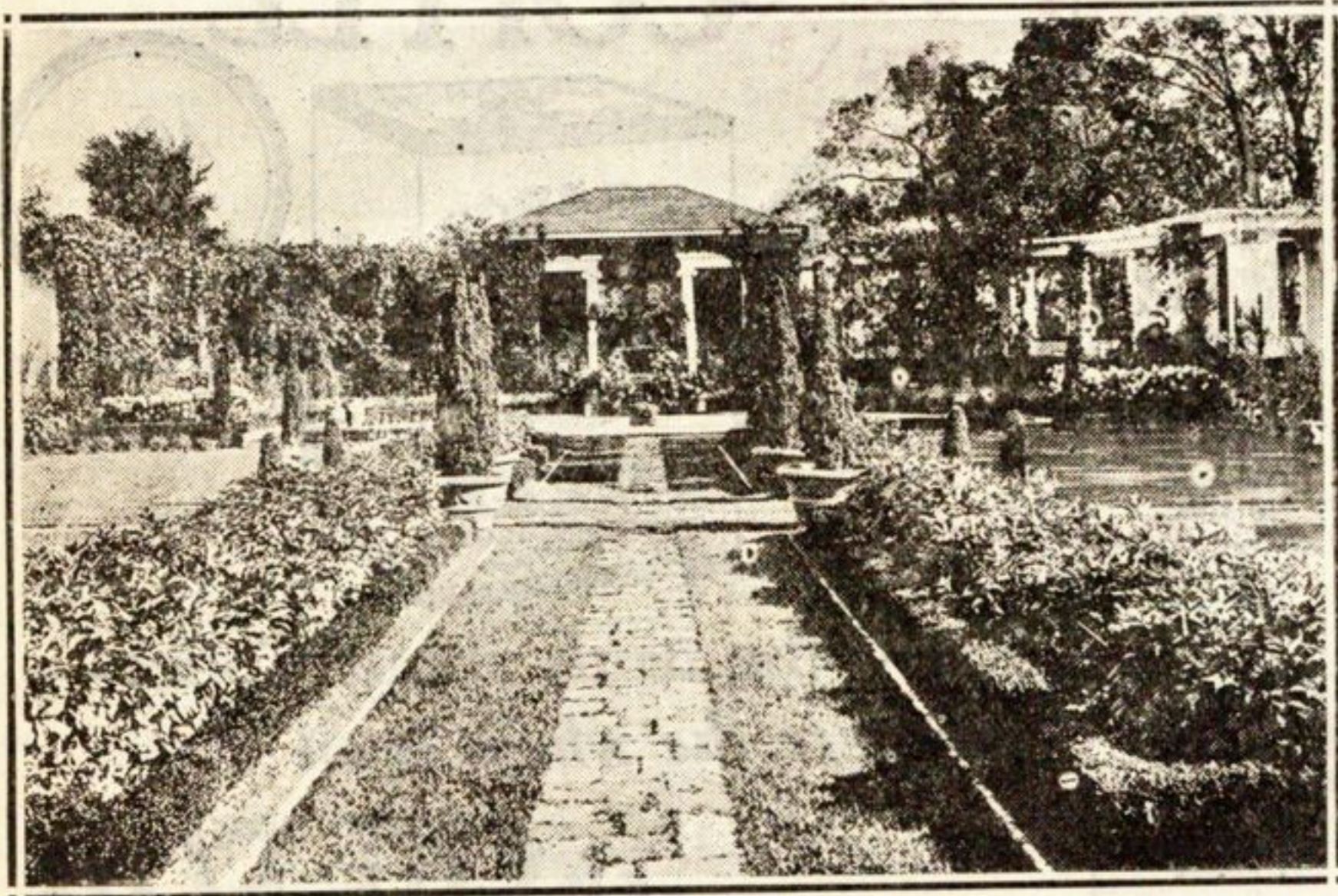


The **LANDSCAPE DEPARTMENT**  
BY  
**CUSHING SMITH, M.L.A.**

**COLOR IN THE GARDEN**

No true garden exists for aught save the pleasure which we derive from the vari-colored flowers within its borders, for they are to the garden what the furnishings, the hangings, tapestries, and bits of color are to the well-appointed interior. For this reason the plants to be grown should receive the same care in their selection that is accorded to even the simplest home furnishing. Brilliant colors in Gardens as in gowns are dangerous playthings. We think of red for warmth, and yet seldom do we find in a quiet home red

a costly one. Long lists of plants must be studied to select varieties for the chosen color scheme, only to find that but few of the species bloom at the same time, and that most of the colors are thus in a degree neutralized by the green foliage and by the turf of the garden panel. Masses of colors are to be sought for in the border, and if these prove to be too small in size the garden becomes spotty and distresses all who may visit



wall-paper on the walls of a north room. Yellow suggests cheer, and yet we need to use it cautiously on the walls or in the hangings in our east dining-rooms. Among my readers are many who have long known that gowns of certain colors are more becoming to some women than to others. Orchid shades or yellow and cloth of gold are neither adapted to all occasions nor to all women. Your eye unconsciously goes to the accent of color which may be placed upon a gown or which may be secured by a corsage bouquet or by a fan of brilliant hue.

So in planning for our garden color effect, remember that the brighter reds and yellows are the spots to which the eye is first attracted. Let these points be in the vicinity of an architectural feature,—a summer-house, a seat, a gateway with red ramblers, or perhaps near a quiet pool where their glory is enhanced by the reflected colors. Would you have greater depth to your property? Plant the blue-green foliage shrubs or evergreens and the blue-flowered and lavender-flowered plants in the distance. If you have a long straight, flower-bordered turf panel or walk you can also increase the apparent depth of the property by slightly narrowing the width of the walk at the far end, in addition to the display of the blue tones in the flowers.

Use with caution such colors as mauve and some of the magenta and lavender shades, for there are few other colors which will blend with them, unless it be the orange tones. Red is also a difficult color to handle, as evidenced by the restless and fatal effect secured in planting red salvia or cannas against a red brick house.

It is a question to the writer whether the so-called "blue-gardens," "red-gardens," or "yellow-gardens," can be much more than an experiment, and at times

it. Without masses you tend more and more to the arboretum, or herbarium type of garden with one or two plants of the same variety, the aim being to grow as many different kinds of plants as possible in a given space, with no thought of their relation one to the other.

For those who may wish to experiment, the winter is listing seven perennial plants each of a few colors, which will give continuous bloom in our border from Spring until Fall. In the order as given they will bloom during

\*\*\*\*\*  
**JERRY KUCERA'S**  
**Perennial Garden at**  
**1050 Oak Street,**  
**Cor. Rosewood Avenue,**  
**Winnetka, Ill.**  
 All kinds of Perennial plants and Shrubs for Sale, also best mixture of Gladioli from 40c to \$1.00 per doz.  
 For any kind of Landscape Gardening call **Winnetka 329.**  
 \*\*\*\*\*

Office Telephone **HIGHLAND PARK 36** Nurseries Telephone **HIGHLAND PARK 58**  
**RAVINIA NURSERIES**  
**F. D. Clavey & Sons**  
**EVERGREENS TREES SHRUBS**  
**HIGHLAND PARK, ILL.**  
**We Plant and Guarantee** **Accurate Estimates Submitted**  
**NURSERIES ONE MILE WEST OF RAVINIA PARK**

March, April, May and so on through the month of September one plant for each month. This list is incomplete, but may be an encouragement to those whose interest is this year centered on a Garden of Color.  
 White: Snowdrop, Hyacinth, Anemone, Astilbe and Campanula, Phlox, Boltonia, Monks-hood.  
 Yellow: Crocus, Golden tuft and Narcissus, Gold Columbine, Coreopsis, Centaurea, Columbine, Sunflower.  
 Orange: Poppy, Spotted Lily, Blazing Star, Turks Cap Lily, Helenium.  
 Red: Tulip, Peony, Lychnis, Gladiola, Lobelia, Phlox.  
 Pink: English Daisy, Armeria, Pinks, Sedum, Dahlia, Phlox.  
 Lilac, Purple: Rock Cress, Iris, Penemon, Boltonia, N. E. Aster, Bush clover.  
 Blue: Glory of Snow, Muscari Hyacinth, Bugle, Delphinium, Iris Sibir.

**Hollister Memorandum Is Mixed Up with a Dollar**

Not long ago someone sent a remittance of one dollar to the Christian Science Publishing company, Back Bay station, Boston, Mass., for something or other. No name was mentioned and no indication given regarding the purpose of the remittance.

The only identity was a Lloyd Hollister, Inc., memorandum slip. Now, the Science Publishing company would like to return the dollar to the sender or make proper record if it is a bona fide remittance. If it's you let 'em know!  
 Mrs. John Lind, 315 Richmond road, is leaving on Tuesday, April 22, for Richmond, Virginia, to attend the annual meeting of the Garden club of America. She is going as a delegate from the Kenilworth Garden club. After several days at Richmond and at the James River Garden, she will go to Washington to attend the annual meeting of the American Farm and Garden association which closes with a reception to its members, given by Mr. Coolidge at the White House. Mrs. Lind will stop in Philadelphia and New York city before her return in about two weeks.

**Frank Borovicka**  
 It is time to plant  
**Pansies and Perennials**  
 Wholesale prices will be allowed if called for.  
 746 Center St. Phone 283  
**WINNETKA**

**West Kenilworth Nursery**  
 Shrubs, Trees, Evergreens, and Hardy Perennials  
 Get our Estimate  
 Nursery on Railroad Avenue, 2 blocks north of Kenilworth Station  
 Phone Kenilworth 1089  
 All Shrubs and trees guaranteed

**SHRUBS PERENNIALS**  
 All Varieties of Annual Plants  
**John Ostrowsky**  
 Landscape and Florist Gardener  
 1487 Asbury Avenue, Hubbard Woods  
 Phone Winnetka 546-J

**SPRAY YOUR TREES FOR SCALE NOW!**  
 "An Ounce of Prevention is worth a Pound of Cure"  
 Protect Your Beautiful Shade Trees From Their Worst Enemies—Oyster Shell—San Jose—Cottony Maple Scale  
 Winnetka 1294 **THOMAS J. LYNCH** PRUNING SPRAYING SURGERY  
 Glencoe 514 **TREE SURGERY**  
 Lake Forest 1323  
 2 Prouty Annex, Winnetka

**GREENWOOD NURSERY**  
**A. STACHEL**  
 Nursery stock planted by experienced Landscape Gardeners to produce the best effect at lowest prices.  
 Estimates furnished and planting guaranteed.  
 Glencoe 155 Winnetka 2168  
 290 Greenwood Ave. 962 Linden Ave.  
 Glencoe Hubbard Woods

**EVERGREENS PERENNIALS SHRUBS—TREES**  
 Phone Winnetka 1549  
**Winnetka Landscape Co.**  
**M. J. Sullivan and Son**  
**GRADING SEEDING LAWNS TRIMMING** **FERTILIZER BLACK DIRT MANURE**  
**GET OUR ESTIMATE**  
 882 PINE ST. WINNETKA

**Potted Plants and Easter Lilies**

Lilies per bloom	.....50c
Hyacinth per pot	.....50c up
Tulips per pot	.....50c up
Darwin Tulips	.....\$1.00 up
Hydranges	.....\$2.00 up
Rose Bushes	.....\$2.00 up
Decorated Baskets	.....\$2.50 up
Decorated Spring Boxes	.....\$2.00 up
Boxes of Cut Spring Flowers	..\$1.00 up
Sweet Peas per bunch	.....50c

**We Deliver anywhere on the North Shore**

**F. MUELLER**  
 Florist  
 Scott and Linden Avenues  
 Opposite Hubbard Woods Lumber Co.  
 Phone Winnetka 437

**BARGAINS**  
**Buy Now—Trees, Shrubs, Fruits, Vines**  
 The land of the Peterson Nursery has been sold and we have a short time to sell off the stock—This is your opportunity

**Cash And Carry**

Big reduction to those who come to our Nursery and get the stock. Freshly dug; roots not dried out. Nursery just west of Lincoln avenue on Peterson road, Chicago. Peterson road is north line of Rosehill Cemetery. Good roads.  
 Tel. Evanston 1434

**We Do Planting**

For those who do not care to do their own planting we will deliver, plant and guarantee.  
 Estimates given.  
 Phone or write our city office.  
 Do it now.

**PETERSON NURSERY** 33 N. La Salle Street, Chicago, Ill.  
 Telephone Main 3613