

New Masonic Temple Rapidly Taking Shape



WINNETKA
MASONIC-
TEMPLE
MARCH 30 1923

WINNETKA LODGE
No 1078
A F & A M

Before long the Winnetka Lodge No. 1078 A. F. and A. M. will be housed in its new temple on Elm street. Work on the structure has been going forward with rapidity as indicated in the above illustration showing views taken on March 30.

EXPERTS JOIN HEILMAN STAFF

Announce Commerce School Additions

Three authorities on commercial problems will join the faculty of the Northwestern university school of commerce during the summer term, Dean Ralph E. Heilman announces. William J. Cunningham the James J. Hill professor of transportation at Harvard, will deliver a series of lectures on "Transportation" and "Railroad Rate Structure." Prof. Victor Pelz of Tulane University, New Orleans, will give courses on "Business Organization" and "Merchandising." Dean Heilman will address executives of the Chicago, North Shore and Milwaukee Electric railroad at Highwood the night of April 9. Dean Heilman will discuss recent developments in the direction and management of public utilities.

WITH CLORE COMPANY
Frank L. Deatherage of Evanston, a well known north shore builder, has become associated with the Wallace D. Clore real estate company at 1177 Wilmette avenue, Wilmette.

Skokie Motor Co.



Headquarters for
the North Shore

712-714-716 Elm Street
Winnetka

Authorized FORD Dealers

IF Spring Comes

Some of the well known Spring ailments may put in an appearance when spring comes—if it ever does arrive.

Pure Drugs and Prescriptions carefully compounded are essential in fighting them.

We try to have only the best of merchandise and use every precaution in filling prescriptions.

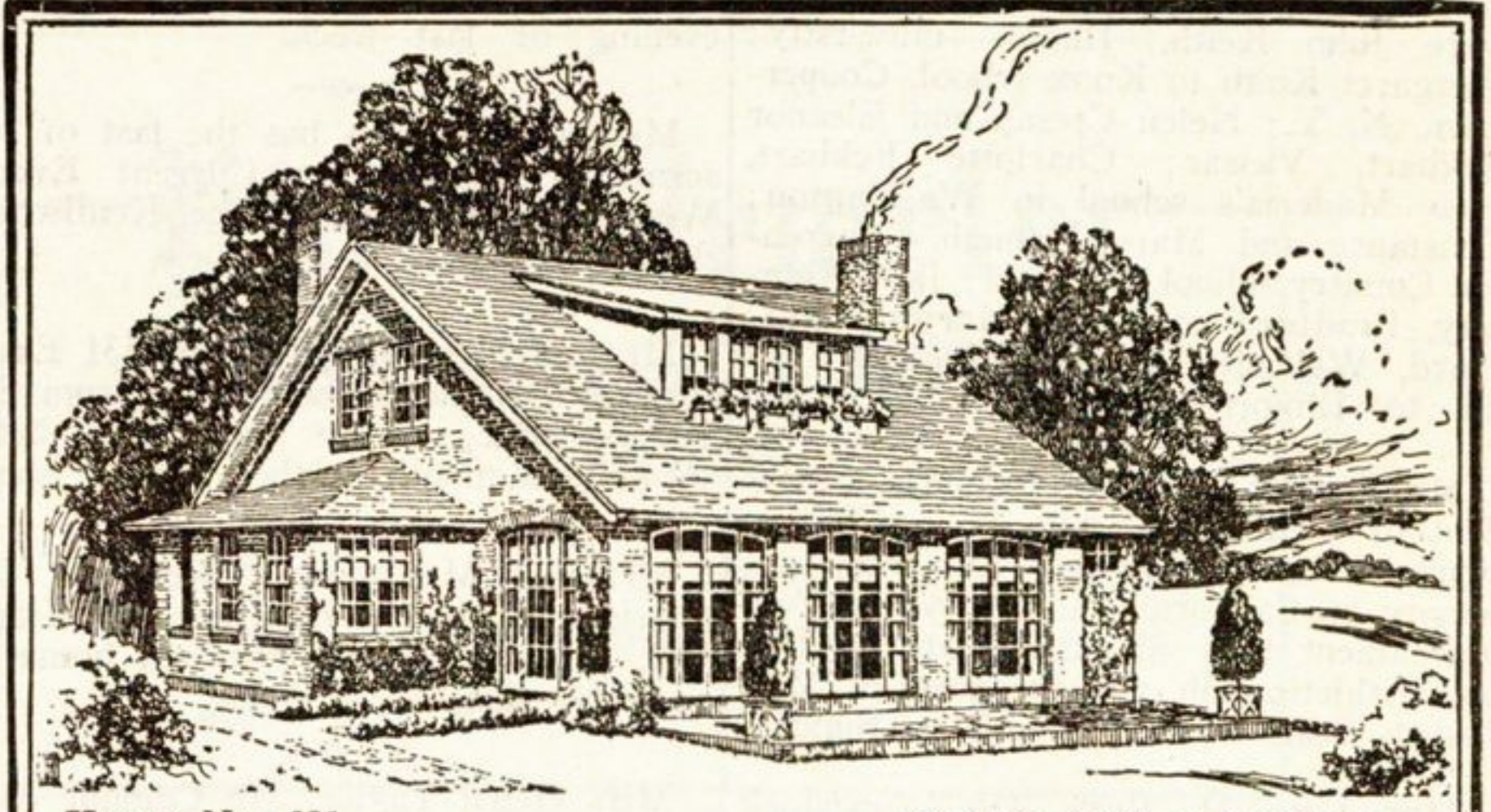
May we serve you when the necessity arises?

Smiling Service

Community Pharmacy
CHAS. R. PATCHEN
574 Phone
Lincoln Ave. 164

Mr. and Mrs. Preston Boyden, who have been residing with the William C. Boydens, 725 Pine street, during the winter, have moved back into their own home at 555 Arbor Vitae road.

Miss Margaret Boyden, 725 Pine street, returned Tuesday to Bryn Mawr, after a holiday vacation with her parents, Mr. and Mrs. William C. Boyden, 725 Pine street.



HOUSE No. 621

Before you decide on your home see the many beautiful pictures and floor plans of our Face Brick homes.

Why It Pays to Build a Face Brick House

A Face Brick house because of its beauty, attractiveness and character is a never-ending source of satisfaction to its owner. It is good to his purse because there are practically no repairs and little painting. It depreciates very slowly and so does not decline in value in case one wants to sell after five or ten years. It can always easily be rented.

Come in and let us give you the facts which bear out these statements—or send for "The Story of Brick," a booklet free for the asking. Also see our pictures and floor plans of more than 100 beautiful Face Brick homes.

CHICAGO FACE BRICK ASSOCIATION

Bonner—Marshall Brick Co. S. S. Kimbell Brick Co.
Brick Sales Co. Burt T. Wheeler Brick Co.
Hydraulic—Press Brick Co. Wisconsin Lime & Cement Co.
CHAMBER OF COMMERCE BUILDING
Chicago, Ill. Phone Franklin 0698

OSCAR A. ANDERSON

INTERIOR DECORATING, PAPER HANGING
and EXTERIOR PAINTING

If It's Decorating
Phone Winnetka 1472

Estimates
Cheerfully Given

1015 Oak Street

Winnetka

South Water Fruit Market

Phone
Winnetka
392

561 Lincoln Ave.
4 Deliveries Daily

Phone
Winnetka
392

SATURDAY SPECIALS

Grape Fruit large and juicy 4 for 25c	Peas, Carrots, Spinach, new Cabbage and all kinds Fresh Vegetables
New York Greening Apples 4 lbs for 25c	Celery nice and crisp per bunch, 15c and 25c
Nice Lovely Fresh Strawberries Low price	New Potatoes 5 lbs. for 25c
Large Navel Oranges Per doz. 59c	Idaho Baking Potatoes per peck 45c

1559
Sherman
Sat. Only

PALACE

Cash Meat Market

Evanston
Illinois
Sat. Only

WE HANDLE NOTHING BUT THE BEST
OUR PRICES ARE NEVER HIGH

Highest Quality Meats at the Lowest Price

Very Best Peacock Hams per lb. 24 ¹ / ₂ c	Very Best Pot Roast per lb. 18 ¹ / ₂ c
Very Best Peacock Rib Bacon per lb. 32c	Fancy Leg of Veal per lb. 24 ¹ / ₂ c
Very Best Sirloin Steak per lb. 42c	Fancy Roasting Chickens, per lb. ... 38c
Very Best Porterhouse Steak per lb. 50c	Fresh Calves' Sweetbreads per lb. 65c

Saturday Special 3 lbs BEST BACON Sliced \$1.00

Fresh Pork loins (small) per lb. 17 ¹ / ₂ c	Swift Premium Bacon (whole) per lb. 32 ¹ / ₂ c
Fancy leg of Spring lamb per lb. 35c	Very Best Peacock Bacon per lb. 32 ¹ / ₂ c