

TELLS FARM WOMEN TO DRESS IN STYLE

Farm women were advised to dress with style and attractiveness at their chores and household duties by Miss Florence Greene, teacher of dress designing, in an address before a dairymen's convention at Chicago.

"There is no reason for a pretty woman on the farm to look like the devil even when cooking pancakes or hoeing the lettuce," said Miss Greene. "Style is just as alluring in the country as in the city."

"Because a farm woman has the chickens to feed is no reason why she should wear a slovenly wrapper. If Maud Muller had raked the hay in a dirty waist, Whittier never would have written a poem about her."

"Driving to town with the butter and eggs is no alibi for a mussed coiffure. Sweeping off the front porch in a bedraggled kimona is a crime and run-over shoes in dusting the parlor is an argument for capital punishment."

"My advise to my sisters of the farm is to look attractive all day long. Have your wash dresses in bright colors and correct styles. The way to keep your skirts and your sleeves clean is to have them both short. I am not an apostle of immodesty but there is no law against adding to the charm of a shapely leg. Silk hose are not for work. Stockings of black or sober tints, seamless so they will keep their shape and not rip, will look just as smart and more harmonious. Pay attention to your shoes. If they must be sturdy, they can at least be neatly polished."

"A touch of ribbon in the hair won't hurt and a bit of lace at the throat is often an effective detail. Always keep yourself so gowned that you won't have to run upstairs when a strange automobile unexpectedly stops at the gate."

Plant Psychology Studied at U. of I. Laboratories

A certain laboratory at the University of Illinois is a Mecca for scientists from not only various sections of this country but many countries of the world. It is the laboratory of plant physiology. The work is going on under the direction of Professor Charles F. Hottes.

Professor Hottes has constructed new and delicate instruments of precision that enable scientists to study the response of plant life and growth to the natural factors of their environment. These instruments are considered of sufficient interest and importance to warrant special visits to this laboratory of specialists from all parts of the United States. Foreign scientists visiting this country on in-

specation trips almost invariably include this laboratory in their itinerary.

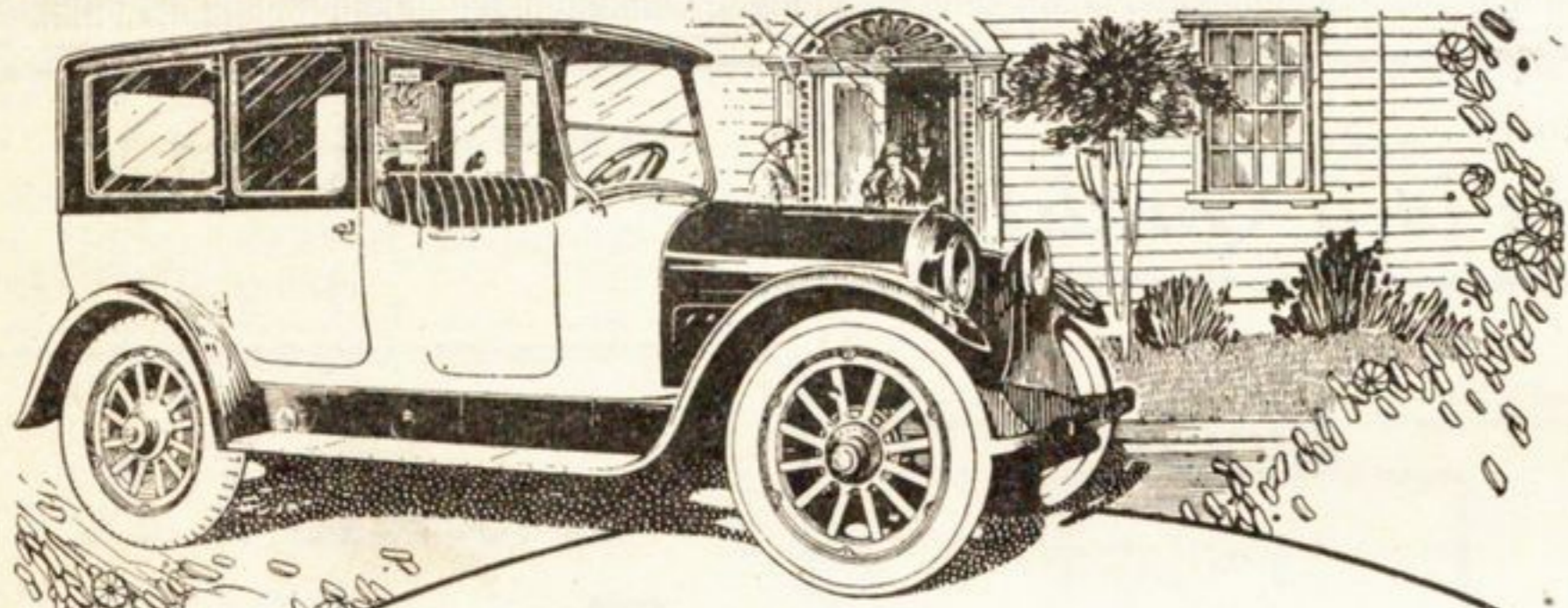
Some of the work already done and in progress includes the study of the temperature rates of winter and spring wheat and the effect of the time of harvesting seed corn on the rate and vigor of germination and growth of the seedling.

With the machinery Professor Hottes has perfected he is able to secure absolute temperature and humidity control in the experimental greenhouses. Some of his work requires a glass-enclosed chamber which will allow enough light for plant growth, but still keep a constant temperature and humidity.

Unique Style Shop

1126 Wilmette Ave.
Wilmette 2403

We have a new stock of the latest ladies' capes, wraps, coats, suits and dresses for Easter, at very reasonable prices.



Assured Taxi Service

The Black & White Cab Company assures you of

- careful, courteous drivers
- clean, comfortable cars
- immediate, rapid service
- all at very reasonable rates

When you think of taxi, think of Winnetka 686 or 155!

Ride Right in a Black & White.

BLACK & WHITE CAB CO.

PHONE WINNETKA 686



6 PROUTY ANNEX

Welch's Cafeteria Wilmette

Think how nice

it is for the family to come in here now and then to take dinner. We offer a fine assortment of meats, vegetables, salads and desserts to choose from.



The Cafeteria way is the best way

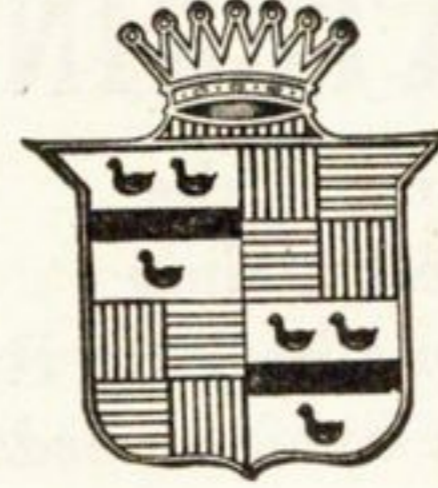
THE COMMUNITY HOUSE

Announces that

There will be no Motion Pictures on March 30th

GOOD FRIDAY

STANDARD OF THE WORLD



CADILLAC

For twenty years Cadillac has stood for the highest standards of precision in fine car manufacture. Steadily increasing production has never been allowed to lessen for a moment this scrupulous care.

Without this remarkable development of methods of precision and their present adaptation to increased production, it is reasonable to assume that the Cadillac of today, manufactured in but half its present volume, would cost \$1,000 more.

CADILLAC MOTOR CAR COMPANY, CHICAGO BRANCH
Division of General Motors Corporation
2301 SOUTH MICHIGAN AVENUE
EVANSTON SALES AND SERVICE, 1820 RIDGE AVENUE

STANDARD OF THE WORLD

1559 Sherman

Sat. Only

PALACE Cash Meat Market

WE HANDLE NOTHING BUT THE BEST
OUR PRICES ARE NEVER HIGH

Evanston Illinois

Sat. Only

Highest Quality Meats at the Lowest Price

Very Best Peacock Hams per lb.	24 ¹ / ₂ c	Very Best Pot Roast per lb.	18 ¹ / ₂ c
Very Best Peacock Rib Bacon per lb.	32c	Fancy Leg of Veal per lb.	30c
Very Best Sirloin Steak per lb.	42c	Fancy Roasting Chickens, per lb. ...	38c
Very Best Porterhouse Steak per lb.	50c	Fresh Calves' Sweetbreads per lb.	65c

Saturday Special 3 lbs BEST BACON Sliced \$1.00

Fresh Pork loins (small) per lb.	18 ¹ / ₂ c	Swift Premium Bacon (whole) per lb.	32 ¹ / ₂ c
Fancy leg of Spring lamb per lb.	35c	Very Best Peacock Bacon per lb.	29 ¹ / ₂ c