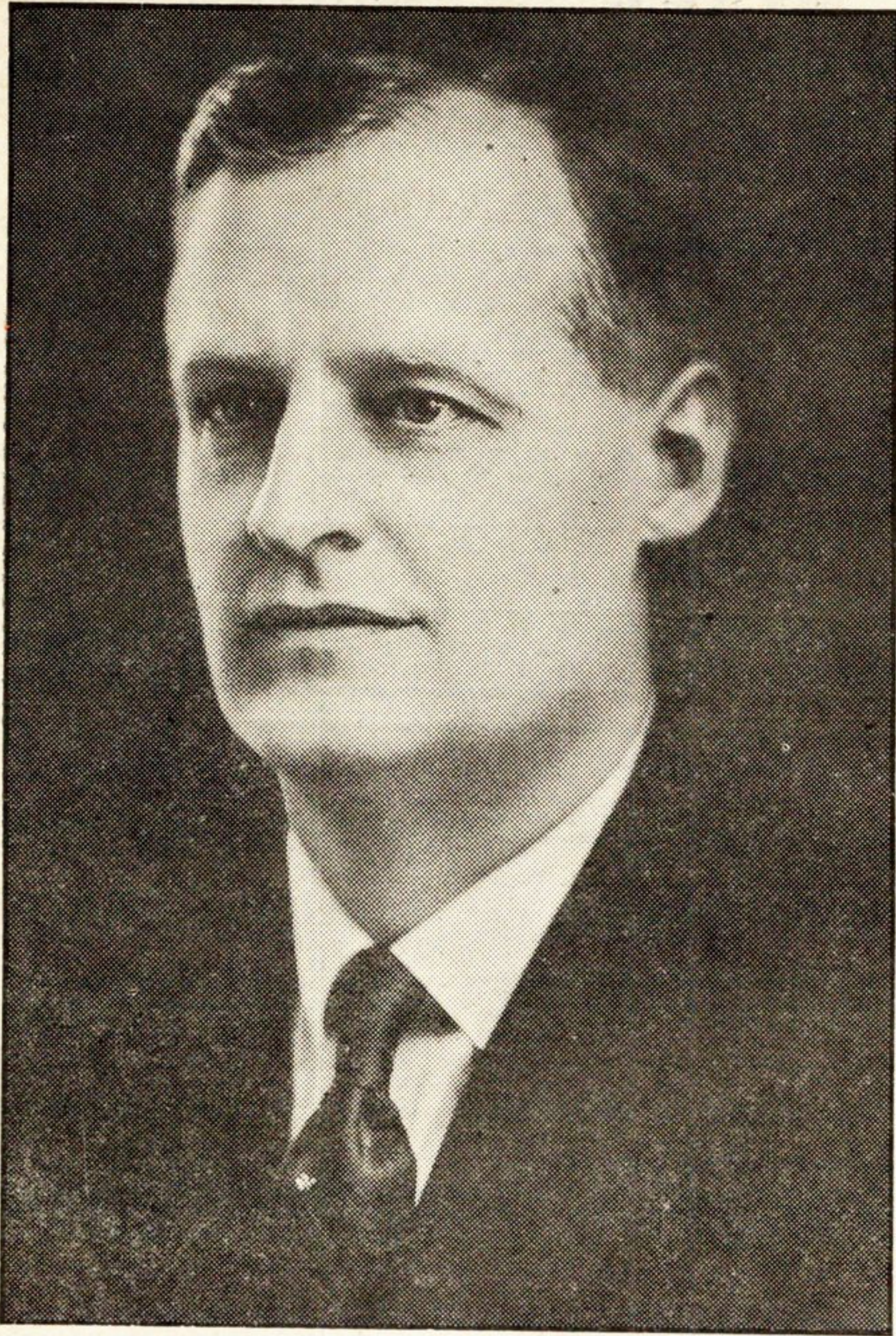


**"LITTLE SYMPHONY" LEADER**



**GEORGE DASCH**

George Dasch has become a well known figure in New Trier Township by virtue of his frequent appearances at New Trier High school as conductor of the "Little Symphony" orchestra. He is also a member of the Columbia School of Music faculty.

**WRAP XMAS PARCELS  
SECURELY, INSURE!**

**Postmaster Gives Out Some  
Sound Advice**

The other day a package mailed to Europe came back to a north shore postoffice, torn, string off and address almost illegible. The sender was immediately notified, and after a delay of about a week, the package has been reforwarded to its destination.

"This is just one instance we have had of careless wrapping," said the postmaster.

And the trouble lies chiefly, he said, in the wrapping.

"See this tinsel paper," and he held up a package for inspection. "Pretty isn't it?" Then he threw it down with force. It burst open at once. "See what happens to it?"

Then he wrapped it in corrugated paper, stiff wrapping paper over that.

"That's much better, and it will safely go through the mails. The tinsel paper is still around the article, but tinsel paper was never meant to go through the mail, as an outside wrapping."

Then he produced a pasteboard box, and wrapped the same article in that.

"If a package goes any distance at all, this is the way it should be wrapped," he pointed out.

He then showed a gift package from a department store. A small article was securely wrapped in a pasteboard box. This was placed in a larger pasteboard box, with shredded white paper around the article.

"This is pretty, too," he agreed. "And it will go through the mails."

Postmasters advise the following rules for wrapping packages:

1. Wrap it with tough paper.
2. Tie with stout cord.
3. Write or print a plain address with ink.
4. Place return address in upper left corner.
5. Attach address to article itself inside the wrapper.
6. Inclose articles liable to breakage in corrugated paper or wooden boxes and pack in excelsior or similar substance.
7. If contents are perishable or fragile, mark the package conspicuously or have mailing clerk do it for you.
8. Think of the miles it must travel, rubbing up against other parcels, handled or rehandled.
9. When ready to mail give it the "once over"—Address; return address; stamps; wrapper; packing.
10. Mail it early.
11. Insure it.

**THE TRANSFORMER  
AND WHAT IT IS**

Perhaps you may have wondered what job is being performed by the black iron boxes seen on many of the poles belonging to the Public Service Company. The question may also have occurred to you "just what is a sub-station and what has it got to do with electric service?" Both are integral parts of an electric lighting system. It would be impossible to operate it without them. The box is a transformer and the machinery in the sub-station is just a transformer—that is, it is the equivalent of three.

To electric light and power companies there are open two possible ways of providing line capacity for growing demands or loads. One involves increasing the size of the transmission wire. The other method is to raise the voltage or pressure on the circuit. Conditions render the first mentioned plan impracticable and so recourse must be had to voltage increase. When this is done—when pressure is raised above a certain point it passes beyond the power of endurance of appliances and right here comes in the transformer.

It is one of the most wonderful inventions ever made and likewise one of the simplest machines imaginable. There are no moving parts in it. Its principal features consist of two coils of wire wound on a core the number of turns varying with the design. The end of one coil is connected to the high voltage supply. From the terminals of the other, wires are extended into the customers premises.

In operation the electric current flowing through the high voltage coil sets up a magnetic field which expands and collapses as the current reverses in the circuit. This causes the second coil to pass through a magnetic field and generates in it a difference of potential proportional to the high voltage in direct ratio to the number of turns in the two coils.

This is all and the meaning expressed in non-technical language is that this simple, efficient and self-working device brings down the pressure to the safe point of use. The big transformers housed in the sub-stations do the same thing on a larger scale. Current from a distance at high voltage enters them and emerges to travel distribution circuits at lower voltage.

The Public Service Company has many thousands of transformers in service ranging from the smallest to the largest made. Its investment in this item of its operating plant alone runs into a great sum.

*Open Every Evening Until Nine O'clock During Next Week*

*The  
Christmas  
Store*

Christmas is almost upon us! A real storehouse of Christmas Gifts await you here, where no time will be lost in filling your list. But, as convenient as it is to shop at this Christmas Store, with its cheerful service, and desire to please, it is necessary you take action at once! Come in today.



**Visit Our Toyland**

As kings dream of dynasties, warriors of conquest and explorers of continents — so children dream through the inspiration of toys.

In our toy section boys and girls find priceless treasures—their friends, their comrades, their ambitions. Bring them in to visit us. Below are only a few of the things they will see.

- DOLLS ....10c to \$3.50
- TEA SETS. 50c to 1.25
- TRAINS ...25c to 8.50
- DRUMS ...25c to 1.50
- ANIMALS .10c to 2.50
- GAMES ...10c to 2.00
- BOOKS ....15c to 2.00

A complete stock of Tree Ornaments are here for your selection.

**Towels**

No matter how many towels your friends may get, one or two more are always welcome, especially when they are as attractive and serviceable as these we are showing.

**Gloves**

Kayser Chamoiseude Gloves are ideal for gifts. Their high quality means service, and their beauty is sure to be appreciated. Reasonably priced from 85c up.

**Gifts for Him**

It is an easy matter to solve the problem as to what to give the masculine members of your list, when you do your shopping here. Ties, shirts, purses, jewelry, and such a multitude of other suggestions are here, you will find it easy to make a selection.



**Pholson Gifts**

These remarkable little novelties never fail to cause delight to the Christmas shopper who is looking for something unusual that is not too expensive. Always, they are such useful little articles that are put up in such an attractive way! The prices are from 25c to \$1.

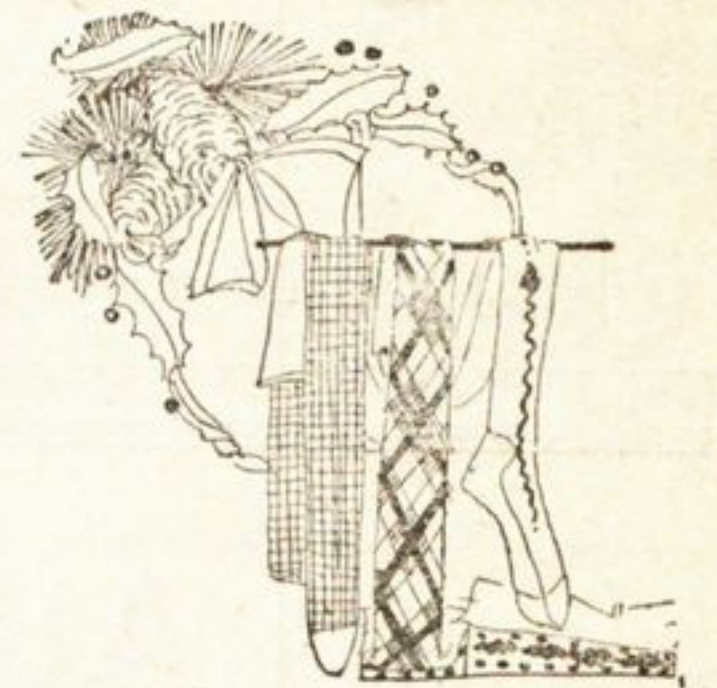


**Compote Sets**

As a special value we have real Polychrome Compote sets—fruit bowl and two candle holders, beautifully decorated, while a limited number last, special at \$3.95.

**Cards-Seals-Cords**

Dress up your parcels with tags, seals, cords, cards and papers! Remember, an attractive dress makes any gift more pleasing. You can supply any of these needs here at this store.



**Hosiery**

Silk Hosiery! No woman ever complains of having too many! Our assortment of Gift Hosiery affords you an opportunity to pick presents that your friends are sure to receive gratefully. Priced from \$1.25 to \$3.50 pair.

**Warm Slippers**

Women's boudoir slippers, of fine quilted silk, with real leather padded soles, in either blue or rose. These make both an attractive and appreciated gift. Priced at \$1.25 pair.

**Handkerchiefs**

Here is an array of this popular gift, from which you can pick gifts for everyone. Never before have the colorings and qualities been so good for so reasonable a price.

The above suggestions only give you an idea of the variety of gifts you can obtain at this store. So many useful, practical and unusual articles are here, and so well displayed, that you will have no trouble in filling your entire gift list here.

**The McALLISTER-WORTHEN CO.**  
1146 Wilmette Ave. :: | Wilmette

