

**Kenilworth Happenings**

Mrs. John P. Oleson, 240 Woodstock avenue, returned home Saturday from a visit in Kansas City with Mrs. Frank Nason. Mrs. Nason, who was a former Kenilworth resident, returned with her guest for a week's stay. On Monday Mrs. Oleson entertained informally for Mrs. Nason and some of her old friends. Mrs. Oleson also had a visit with Mrs. Abernathy, formerly Mrs. Tinsman, while in Kansas City.

Mrs. F. E. M. Cole, 315 Essex road, who seriously injured her hand recently, is reported to be on the convalescent list, although it is probable that her hand will be out of use for several weeks to come.

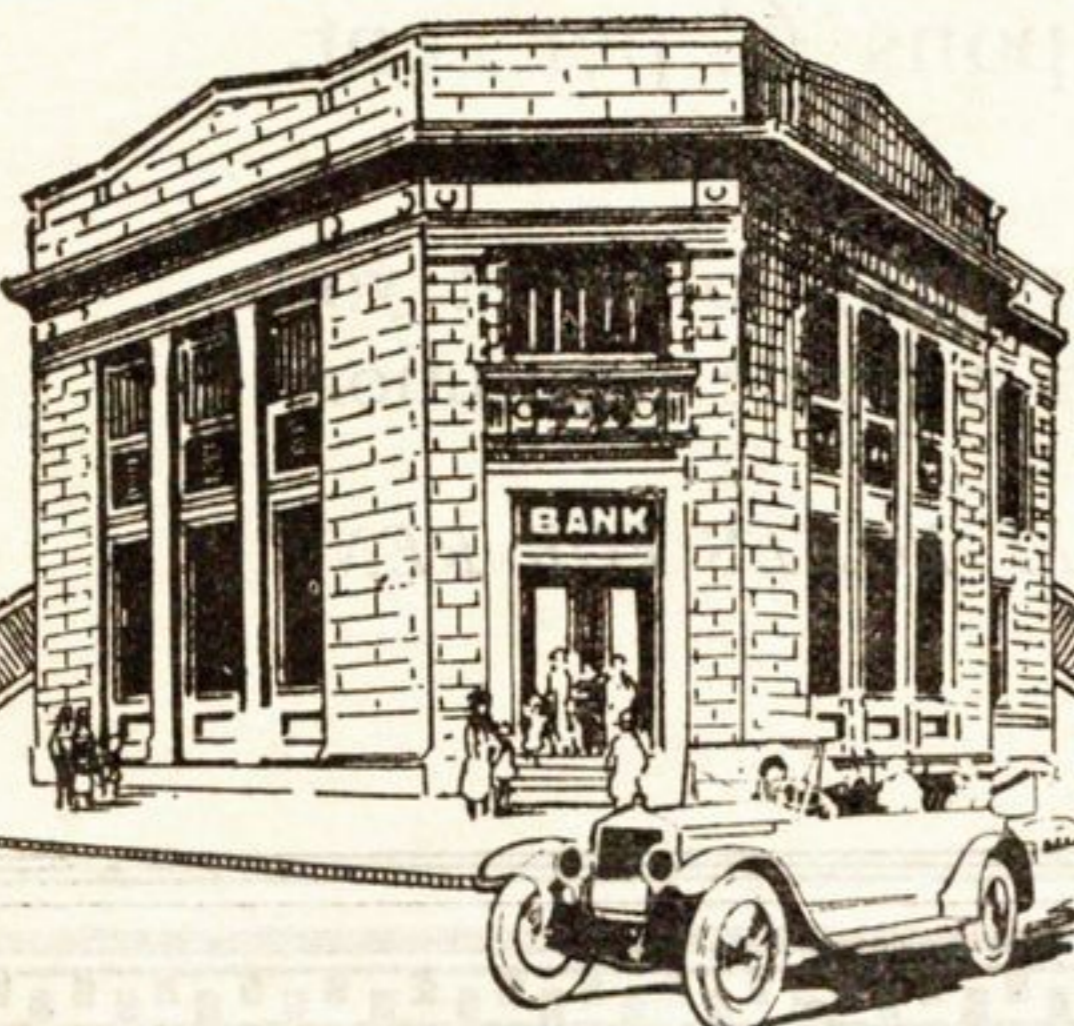
Mrs. Alfred Roy Hulbert, 528 Abotsford road, entertained her Bridge club on Thursday, November 23, at her home.

**Episcopal Prelates Speak at Church Mass Meeting**

Episcopal churches of the north shore from Evanston to Glencoe, inclusive, are to be represented at a mass meeting at St. Luke's Episcopal church, Evanston, Sunday evening, December 3.

Bishop Charles P. Anderson and Bishop Brent of the denomination are to be the speakers on the general theme, "The Church's Program."

Delegations from the various Episcopal churches in New Trier will have specially reserved pews at the meeting.



**RELIANCE**

*Your self-reliance grows as rapidly as does your savings account . . .*

IN a man's savings bank book you will find a record of his self-denial and the story of his well spent life. You will note indications of approaching prosperity. Open a savings account at this bank and add regularly to your balance.

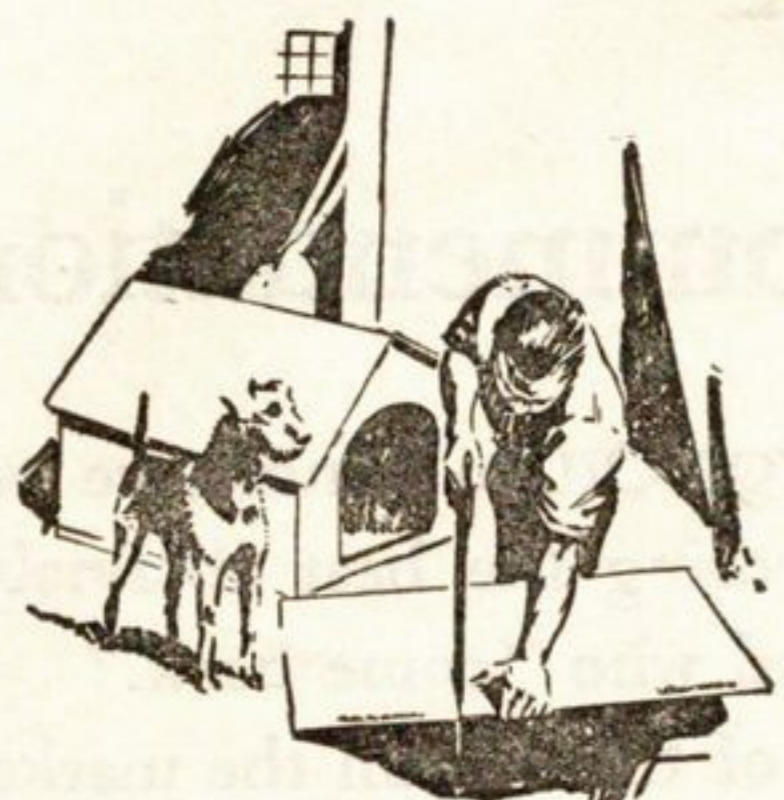
**WINNETKA TRUST & SAVINGS BANK**  
WINNETKA, ILL.

**The Very Best in Meats for the Thanksgiving Table.**

TURKEYS - DUCKS  
GEESE - CHICKENS

Fresh Fruits Vegetables  
Groceries  
ALL KINDS OF NUTS

**Woodland Grocery & Mkt.**  
Phones Winn. 78 and 79  
1083 Gage Street



**Good to have always on hand**

YOU know how it is in every home—there's usually something that needs attention, a wall or ceiling needs fixing, or you need extra bins or partitions. These jobs are easy with



With the least time and expense you get satisfactory jobs that look well and give long service. The better you know wall-board, the more you'll be convinced that you want Cornell-Wood-Board, and nothing else. It's made to give you satisfaction; pure wood fibre, triple-sized to resist heat, cold and moisture; mill-primed for paint or calcimine; or its attractive oatmeal-finish looks well as it is.

We have Cornell for you because we know it's the ideal wood-board.

"165 Uses for Cornell-Wood-Board" is a booklet telling how you can make many useful things for the home. You can have it for the asking. Phone, write or call for it.

**Winnetka Coal-Lumber Company**

1559 Sherman

**PALACE**  
**Cash Meat Market**

Evanston Illinois

Excellent Quality

We handle nothing but the BEST  
OUR PRICES ARE NEVER HIGH

Reasonable Prices

**Specials For Thanksgiving**

Fresh Dressed Turkeys---  
Geese---Ducks---Chickens

Carefully selected, tender, juicy poultry---Every fowl that is sold in this market is an invitation to the customer to come back for more.

FRESH DRESSED 29<sup>1</sup>/<sub>2</sub>  
SPRING CHICKENS 29<sup>1</sup>/<sub>2</sub>

PEACOCK BACON 35<sup>1</sup>/<sub>2</sub>  
HALF or WHOLE 35<sup>1</sup>/<sub>2</sub>

Fresh or pickled beef tongues, per lb. . . . . 30c

Milk fed leg of veal, per lb. . . . . 24<sup>1</sup>/<sub>2</sub>c

Native rib roast of beef, per lb. . . . . 35c

Small Pig Pork Loins, whole . . . . 19<sup>1</sup>/<sub>2</sub>c

Fancy leg of spring lamb, per lb. . . . . 32<sup>1</sup>/<sub>2</sub>c

Very best sirloin steak, per lb. . . . . 40c

Very best cut of pot roast per lb. . . . . 18<sup>1</sup>/<sub>2</sub>c

Very best rump corned beef, per lb. . . . . 28c