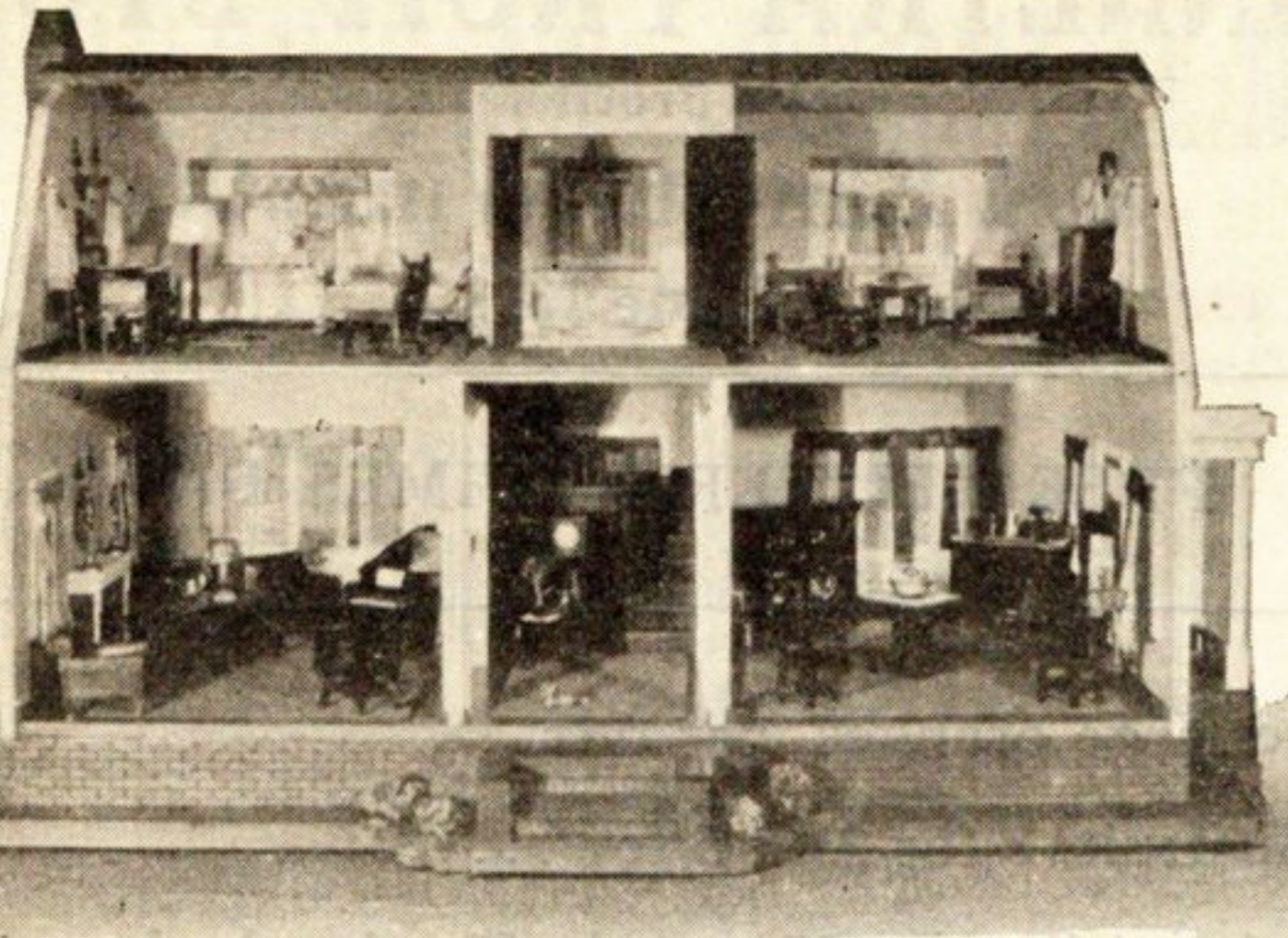


A PEEP IN THE DOLL HOUSE

DISPLAY DOLL HOUSE
AT ADAMS' PHARMACY

The doll house given by Mr. and Mrs. Emil C. Butz of Wilmette to the Arden Shore association to be sold for the benefit of the Camp at Lake Bluff, is at present on exhibition at Adams Pharmacy, Winnetka.

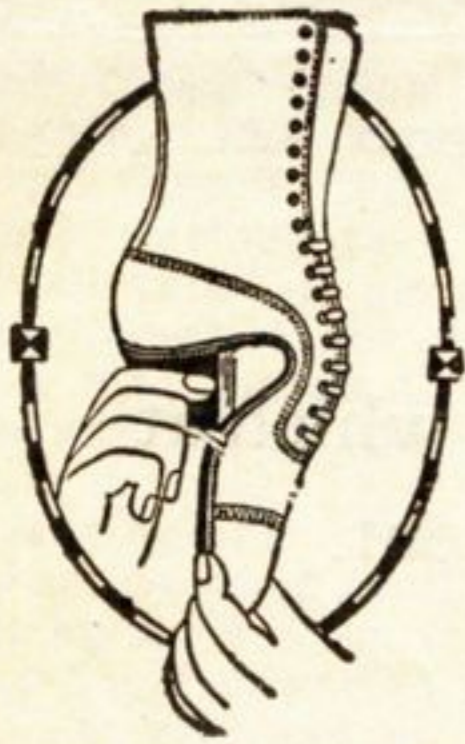
For the past two weeks it has been in Kiddie Nook, Wilmette, and at all hours of the day there has been an eager crowd of children, with noses pressed to the glass, in front of the window, while an equally interested throng of mothers, grandmothers, aunts—and even fathers and big brothers—crowded closely in behind.

This little house is unique among doll houses. It is a modern home, Dutch Colonial in type, and its exquisite furnishings are not only a delight to the eye but their beauty of line and simplicity of design have a direct influence in molding the taste of the child.

Both house and furniture were made by Mr. Butz in his spare moments during the past six months.

It is the desire of the committee in charge that every little girl along the north shore should have an opportunity of seeing this little house, so after it has been in Winnetka for a few days it will be taken to Glencoe and then to other villages.

Information concerning the sale of the house may be obtained from Mrs. Joseph J. Siddall, Wilmette; Mrs. Grant Ridgway, Kenilworth; Mrs. Marcus D. Richards, Winnetka; Mrs. Francis E. Miller, Glencoe.

Most Important of A
Is the Fit of a Shoe

A pair of shoes may have every good quality and yet if it fails to fit, all the other qualities feel like so much wasted effort. Miss Olive Alcorn, whose graceful dancing has pleased large audiences at the N. Y. Winter Garden, threw away twenty pairs of shoes when she found in Cantilever the one last which seemed to provide everything a wise woman wants in shoes; comfort, flexibility, good looks, freedom from fatigue.

Professional women in all walks of life—actresses, school teachers trained nurses, secretaries—are changing from ordinary shoes to Cantilevers (with the flexible arch) because foot comfort and freedom from foot fatigue are aids to success amidst competition. You can't be at your best with lagging feet.

A lady in Tennessee wrote recently to the Cantilever factory summing up in a few words all we might say in columns regarding this feature of Cantilever Shoes. Courtesy induces us to omit her name:

"I received the Cantilever Shoes and they surely are comfortable—more so than any shoe I have had in years and years. I don't think I have ever had a shoe fit as well as they do."

There is a good reason for this comfort and precise fit of Cantilever Shoes—they're made that way. If you will try on the Cantilever at our store (we are exclusive selling agents here) the test will be appreciated even if you do not want to buy at present.

On Sale Exclusively on the North Shore by
NORTH SHORE BOOTERY
529 DAVIS STREET

Phone Ev. 6756
EVANSTON - ILLINOIS

To insure proper fitting, we have installed an X-Ray machine in our store. This service to you without charge.

Our Cantilever Booklet Sent on Request

COMMUNITY GOLFERS IN
ANNUAL MEET NOV. 20

The annual meeting and election of officers of the Evanston Community Recreation association, comprising a large membership in Wilmette, will be held at a dinner at the North Shore hotel, Evanston, Monday evening, November 20, at 6:30 o'clock.

Candidates to be voted upon in the annual election, for a term of three years, are C. M. Cartwright, William S. Powers, Henry E. Hedberg, Charles N. Stevens, Peter N. Jans and Harry M. Bachman. Prizes are to be awarded the following winners of last season's championship flights: Matt Jans, club champion; Waldo Thorsen, runner-up; Peter N. Jans, low qualifying score. Other prize winners include W. J. Marshall, T. H. Hopkins, C. E. Rollins, L. L. Dines, W. L. McGoodwin, C. J. Dwyer.

Municipal and civic leaders of the two towns, as well as a score or more of leading professional golfers will have places of honor at the banquet table.

N. T. C. A. MEETING
Members of the New Trier Township Commercial association will hold their regular meeting Monday evening, November 20, at 8 o'clock, at the Wilmette Village hall, Wilmette and Central avenues.

When Winter Comes

that roof you have neglected to
take care of will be leaking.

Now is the time to reroof your home and stop the leaks that will cause dampness and decay to rot the supports and roof boards. Asphalt roofing as laid by Becker is everlasting. The preservative qualities and permanence of asphalt as used in the Becker process make it unnecessary to ever reroof your home.

Give us the opportunity to explain how this process has been the means of successfully making and laying 200,000 Barco roofs, some of which are in service twenty-three years.

Made, Laid and Guaranteed by
F. BECKER

Asphaltum Roofing Co.

Ridge and Lake Avenue WILMETTE, ILL.

Phone Wilmette 364

"Select Your Roofer As You Would Select Your Banker"

Anybody can use
Cornell

MOST boys like to make things. If your boy is handy with tools, he will surprise you with the many useful and entertaining things he can make with

Cornell
A Wood Board

It's easy to saw and handle, and it holds nails because it's all wood. Anybody can use it; and it's ideal for hundreds of uses.

The satisfying thing about Cornell-Wood-Board is the way it serves and looks well for a long time. It's made to. It's mill-primed ready for paint or calcimine; or its oatmeal-finish looks well without. It's triple-sized to resist heat, cold, and moisture—made to "stay put."

"165 Uses for Cornell-Wood-Board" is a booklet telling how you can make many useful things for the home. You can have it for the asking. Phone, write or call for it.

Winnetka Coal-Lumber Company

Furniture Repairing
Upholstering Cabinet Making

Mattresses Made and Renovated
Any Article of Wood Made to Order
Antique Furniture Repairing
a Specialty

John A. Odh

Phone Win. 235

933 Linden Ave., Hubbard Woods

WESTERN UNDERTAKING CO.

FUNERAL DIRECTORS

WE STRIVE TO PLEASE

Our constant desire when called is to render the
most EFFICIENT and COMPLETE SERVICE

and to supply FINE FUNERAL FURNISHINGS at
the very LOWEST COST.

LADY ATTENDANT

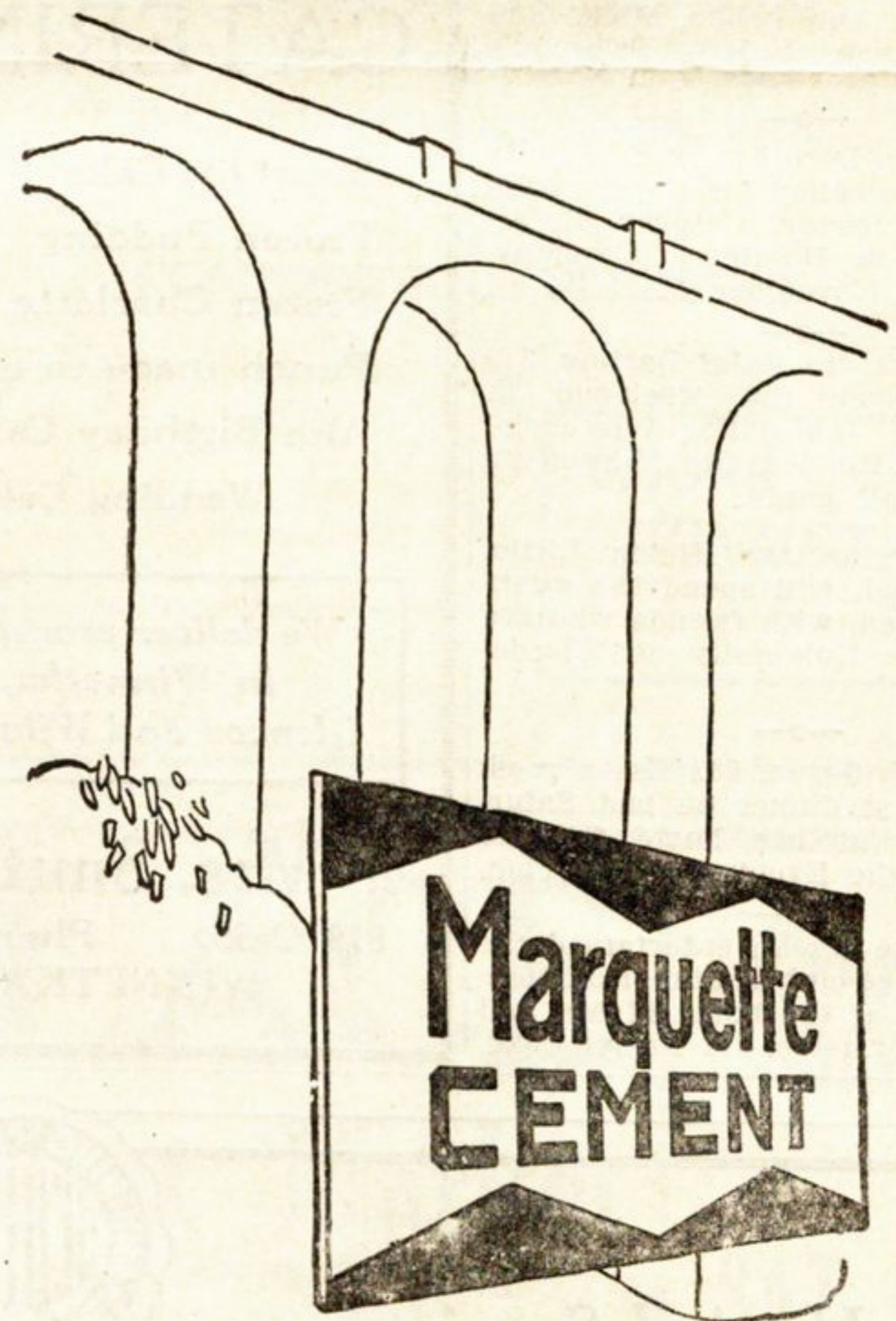
No charge for distance

H. T. NEELY

MANAGER

1022 Davis St.
Evanston, Ill.

Phone Evanston 98
Phone Wilmette 280



TODAY the Marquette Company seeks business on the basis of its ability and its purpose to market a good quality cement at a reasonable price—a purpose to which we set ourselves more than thirty years ago.

Marquette Cement Manufacturing Co.
Marquette Building, Chicago

LOCAL DISTRIBUTORS

Winnetka Coal-Lumber Co.