

# NORTH SHORE MAN HAS BIG ARMY JOB

**Gen. Moseley, Ft. Sheridan, Born in Evanston**

About 27 years ago, when George Moseley entered the Military Academy at West Point, his friends little dreamed that today he would be in command of the corps area in which he was born. Brigadier General George V. H. Moseley, commanding officer at Fort Sheridan, situated on the lake between Highland Park and Lake Forest, is stationed less than 15 miles from his old home on Ridge ave., Evanston.

His service in France with General Pershing brought him a number of decorations. While assisting General Dawes, he was especially chosen to organize and command the largest training camp in the United States this summer at Camp Custer, near Battle Creek, Mich.

**Dawes "Knows" Him**  
The results obtained by the camp commander exceeded the expectations of visitors and inspectors with the exception of General Dawes, who, when asked on a visit to the camp for his views and opinion on the camp, replied, "It's a fine camp, but that is what I expected to see."

Not long ago General Moseley was considered for the office of quartermaster general of the army, with rank of major general, according to a service paper. Upon hearing this he denied that he was a candidate and stated that he would not accept the position, if offered. According to a Battle Creek paper, members of the Chicago Chamber of Commerce proclaimed him one of the three leading generals of the army today.

On a number of occasions he has stated that Fort Sheridan would be more active next year. Students of the R. O. T. C. at Northwestern university will be pleased to hear that General Moseley is in favor of having the training camp at Fort Sheridan next year.

**Note of Warning**  
"It is the policy of the United States that the military establishment in peace be a relatively small regular army and the ultimate war force of the nation be a great army of citizen soldiers. But reliance upon citizen soldiery is subject to the limitation that they cannot be expected

to meet a trained enemy until they, too, have been trained," said Gen. Moseley.

"It is therefore our most important military problem to devise means for preparing great armies of citizen soldiers to meet the emergency of modern war. An unprotected person on a dark street corner, with a pot of gold on his head and his hands in his pockets would no doubt receive some attention from those in need of bread. The world today is in chaos and we are the wealthiest nation. It is to prevent war that we need to be in a state of preparedness. It requires more than the pen to enforce law and order."

## Ernest Schuett Plans Sale; Chased Out by Golf Demands

The demand of the golfer for more room in which to get a free swing at his game has chased Ernest Schuett "galley west."

Ernest, until quite recently was a staid farmer west of Wilmette. Today he is about to sell out everything to make room for the Playmore Golf course.

Saturday, October 28, Schuett will auction farm implements, cattle horse s, poultry and feed. He's going to whack the prices like "sixty," too.

And here's the big item. Ernest will serve luncheon on the grounds. Those attending this novel affair will be asked, incidentally, to inspect the new Playmore Golf course now being built on the Schuett farm.

## Hallowe'en Time Brings Big "Tu-Eds" Festivity

Among Hallowe'en celebrations that are attracting the attention of north shore dance devotees, is the

Hallowe'en Party and Dance planned by the "Tu-Eds," an entertainment club of distinction in these parts. Dr. Watson's Alco Artists, known as the "colored wonders," will provide the music for the festivities. "Do not miss this party," read the advance notices, "as a big surprise is in store for everyone." Oddfellow's hall, Wilmette, will be the scene of the novel affair. Tuesday

## R. M. Johnston & Co. Sells Large J. R. Thompson Tract

R. M. Johnston and company report the sale of 108 feet of ground on Elmwood avenue near 16th street for John R. Thompson, the restaurant man, to Detlef Hanssen, who will

improve the property in the early spring with two residences.

The same firm also reports the sale of 200 feet of frontage at the southwest corner of Cherry street and Maple avenue, Winnetka, a lot on Central avenue near Third street in Wilmette for Charles F. Weil, and a parcel of approximately one acre on Vine avenue, near the lake in Highland Park, for H. Van Schaicht.

# \$1,000 FOR A WOMAN

## WILMETTE GARAGE and CARTAGE CO.

Moving and Expressing  
Anything Anywhere Any time

EXCELLENT SERVICE  
PROMPT DELIVERIES  
REASONABLE FEES

We are equipped to handle any size shipment from a carload—down.

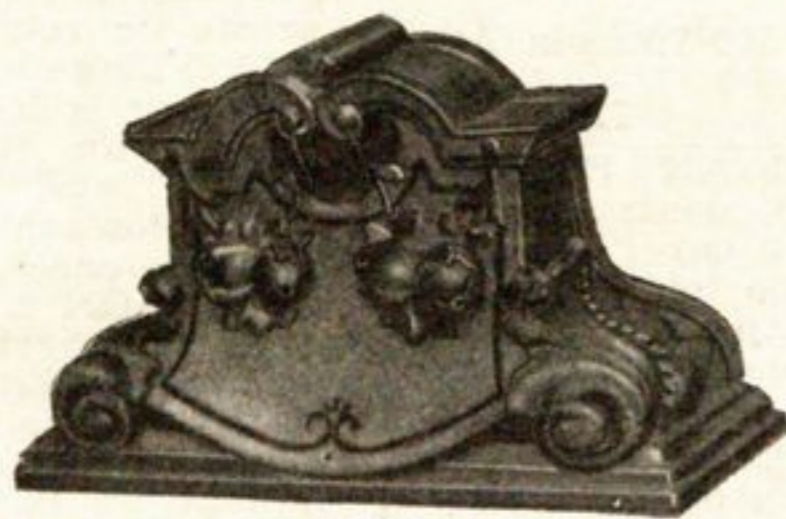
Phone 40  
1225 Central Ave.

## A HOME ALL YOUR OWN IN RAVINIA PARK

Overlooking Lake; 2 1-2 blocks from Northwestern Station; 13c fare, 45 minutes to the Loop. Will have 15 homes of distinctive type completed for Spring delivery on large heavily wooded homesites. 60x170 feet abutting Sheridan Road. Beautiful ravines; \$720 down will make reservation; finest district open on North Shore; inspection by appointment only. Address J. D., Box XXX, Lake Shore News, Wilmette.

## NEWCOMB, MACKLIN & CO.

PICTURE  
FRAMES and  
MIRRORS



BOOK BLOCKS  
LAMPS and  
CORNICES

RETAIL SALESROOMS AND GALLERIES

N. W. Corner State & Kinzie Sts.  
Chicago

Phone  
Central 5215

## Chicago Coach and Carriage Company

Designers and Manufacturers of

Automobile Bodies, Tops, etc.

Winter Inclosures, General Body  
Rebuilding, Repairing and  
Painting

Estimates Cheerfully Furnished

1223-1231 MICHIGAN AVENUE, CHICAGO  
Telephone Calumet 0424-5-6

# Ride "At Ease"

Riding on a high-speed North Shore Train you will enjoy real travel comfort. The roomy cars, restful seats and attentive employes make every minute of your journey a pleasant one. Plan your next Chicago trip over this Road of Service. Central terminal locations and frequent train service are added conveniences.

# North Shore Line



Fast Limited trains for Chicago leave Winnetka every hour from 6:41 a. m. to 1:41 a. m.

Baggage Checked to All Points on the Line.

## To the Heart of Chicago

North Shore trains take you direct to the center of Chicago's business district--the Loop Stations--you get off at the doors of the big department stores, business houses, hotels and theaters. Or you may ride clear through to Woodlawn.

## Chicago North Shore & Milwaukee Railroad

Winnetka Ticket Office  
Elm Street