

AMUSEMENT RESORT ON NORTH SHORE SITE

Great New Amusement Garden to Be Located West of Glencoe

WORK ALREADY ON

New Place to Be Called "Garden of Eden"

A \$750,000 establishment, known as the "Garden of Eden," which will be the greatest amusement resort in this part of the country, will be located at the intersection of Waukegan and Dundee roads, west of Glencoe, according to an announcement this week.

The owners are Frank L. Hoffman, 2041 Kenilworth avenue, and Andrew Bauer, 2306 Kenilworth avenue, Chicago. Mr. Hoffman last Saturday negotiated a \$400,000 loan through the Chicago Title and Trust company.

Briefly this is what the modern Garden of Eden will be: A combination of country club and a glorified amusement garden of the Marigold type, only much larger, more modern and gorgeous. For instance, work

already is under way on the casino, a structure 300 feet long and 150 feet wide, in the Spanish type of architecture. There will be a large cafe with seats for 2,400, and a dancing floor large enough for 2,000 couples at one time.

Plenty of Dancing Space

On the stage elaborate revues will be given, changing every two months, with big time vaudeville and dancing by guests during the evening. In warm weather the open air dancing floor will be used. This will be surrounded by tables for 10,000, with room for 25,000 in an emergency.

The upper floors of the casino will be used for private parties and special banquets. The main banquet room will seat 1,800. A. J. Fisher & Son are the architects.

Electric Fountain

Hollister & Root, landscape architects, have drawn an elaborate and beautiful grouping of buildings, drives, fountain and lake on the wooded tract. After leaving the casino and open air dance space, one crosses an artificial lake by a small bridge, coming to a \$50,000 electric fountain.

Passing this one comes to the Garden of Eden Golf club, a separate organization. The initiation fee to this will be \$250 with no further dues, says Mr. Hoffman. Club members may attend the revues without cost. The general public will pay \$1.10, according to present plans.

George O'Neil is chairman of the greens committee of the club, and is laying out the miniature eighteen hole course. There'll be tennis courts and other outdoor attractions. Tournaments and exhibitions will be staged weekly. "Chick" Evans is

chairman of the sports and pastimes committee of the club.

Busses to Paradise

Arrangements have been made with the same company which operates the busses from Carson Pirie's to the west side stations to run a bus line de luxe along the North Shore. The contemplated fare will be \$1.

Mr. Hoffman was emphatic in his statement that the Garden of Eden will contain no applejack. It's not to be a road house in any sense of that word, he says, and no drinking will be permitted. At the present rate work is progressing he hopes to have his prospective North Shore paradise ready for the fox trotters and the golf swatters some time next April.

READ THE WANT ADS

K. OF C. PICNIC BRINGS 8,000 OUT, ON SUNDAY

Ouilmette Nine Wins First, Loses Second Game

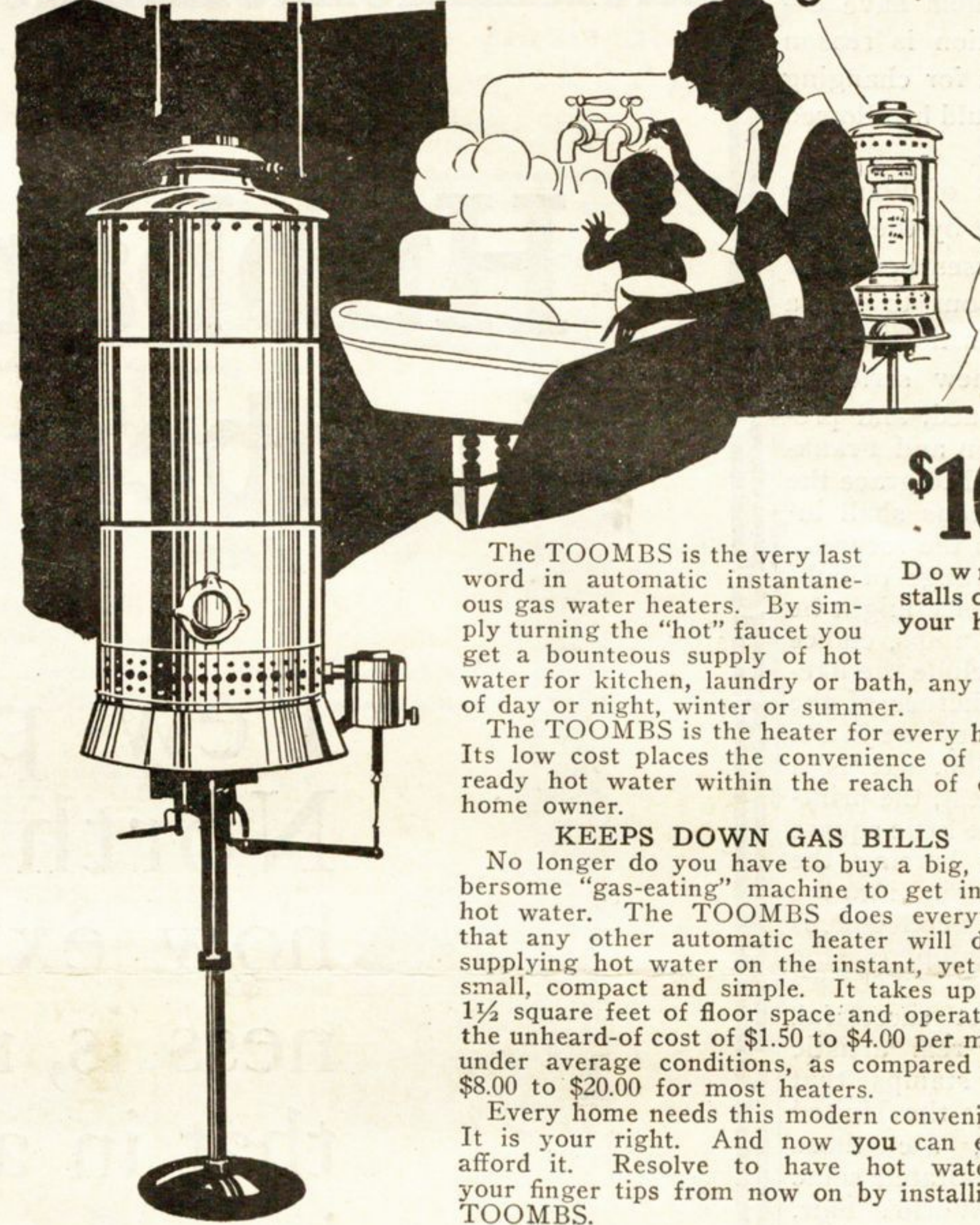
At the Knights of Columbus picnic Sunday, attended by approximately 8,000 people, Ouilmette defeated University 5-4 and Ravenswood trimmed Newman 5-1. In the playoff for the

pennant in the afternoon Ouilmette was crushed by the Ravens 8 to 0. Miserable support cost Matt Heinzen, local hurler, his third successive victory in two days as he won the morning tilt and vanquished Columbus, Saturday in a K. of C. League baseball argument, 5-4.

In Saturday's game at Pioneer field, he fanned 11, walked two, hit two and allowed three hits, one a scratch. Ouilmette led 4-2 until the ninth inning when Columbus tied the count. Bob Greenslade scored the winner in our half of the same spasm.

The defeat deprives Columbus of further chance to cop the league bunting. It was Ouilmette's second victory. The locals play University, another pennant contender, Saturday at Pioneer field.

*You Too, Can now Afford this Luxury
Instant Hot Water at Your Finger Tips*



\$10

The TOOMBS is the very last word in automatic instantaneous gas water heaters. By simply turning the "hot" faucet you get a bounteous supply of hot water for kitchen, laundry or bath, any hour of day or night, winter or summer.

The TOOMBS is the heater for every home. Its low cost places the convenience of ever-ready hot water within the reach of every home owner.

KEEPS DOWN GAS BILLS

No longer do you have to buy a big, cumbersome "gas-eating" machine to get instant hot water. The TOOMBS does everything that any other automatic heater will do in supplying hot water on the instant, yet it is small, compact and simple. It takes up only 1 1/2 square feet of floor space and operates at the unheard-of cost of \$1.50 to \$4.00 per month under average conditions, as compared with \$8.00 to \$20.00 for most heaters.

Every home needs this modern convenience. It is your right. And now you can easily afford it. Resolve to have hot water at your finger tips from now on by installing a TOOMBS.

**PRICE COMPLETE WITH
INSTALLATION**

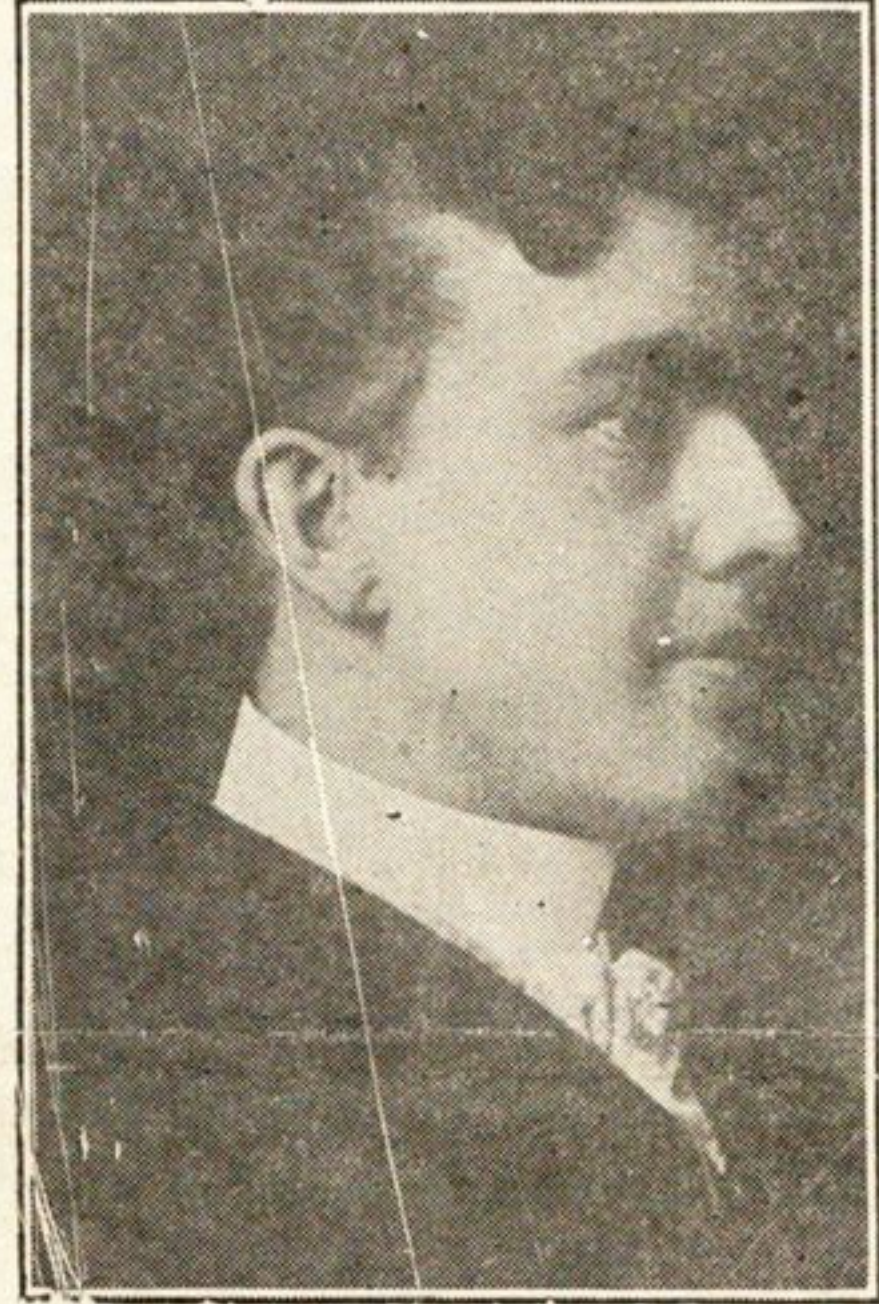
\$150.00

Heater now on display at
Winnetka Pharmacy
730 Elm St. Winnetka Tel. 33

Over 600 in use on the North Shore

Telephone Winnetka 1399, or
write for further information

CLARENCE W. HARRIS
Tel. Winnetka 1399 :: 1055 Chatfield Rd.



Wm. H. Scott
Undertaker

I am now in business for myself, conducting the **ONLY** undertaking establishment in Wilmette. Conscientious service is my motto.

1124 Central Avenue
WILMETTE

No longer with the
Western

Phone Wilmette 654

Your Country Place

The man who talks about his summer home always opens a broad vista for speculation. Has he a real home? Does he content himself with a shack? Is it located at a "summer resort"—a melting-pot meeting place of all creeds, from the whole range of the social scale?

These questions are worth considering. If you have had plans for a little place away from the city, among people of your own kind, secluded and quiet, you will be interested in the opportunities offered in Nippersink Residential Park.

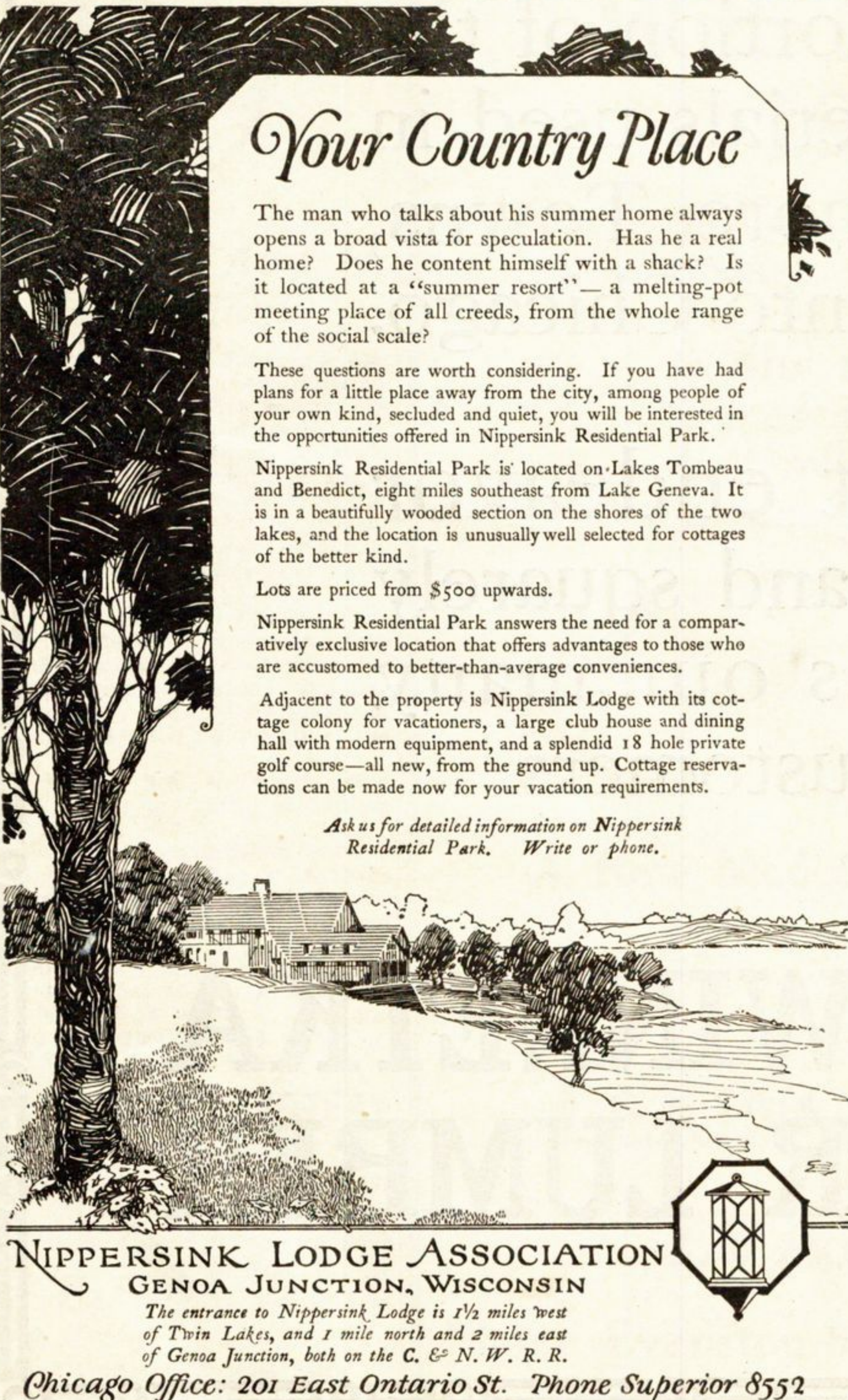
Nippersink Residential Park is located on Lakes Tombeau and Benedict, eight miles southeast from Lake Geneva. It is in a beautifully wooded section on the shores of the two lakes, and the location is unusually well selected for cottages of the better kind.

Lots are priced from \$500 upwards.

Nippersink Residential Park answers the need for a comparatively exclusive location that offers advantages to those who are accustomed to better-than-average conveniences.

Adjacent to the property is Nippersink Lodge with its cottage colony for vacationers, a large club house and dining hall with modern equipment, and a splendid 18 hole golf course—all new, from the ground up. Cottage reservations can be made now for your vacation requirements.

Ask us for detailed information on Nippersink Residential Park. Write or phone.



NIPPERSINK LODGE ASSOCIATION
GENOA JUNCTION, WISCONSIN

The entrance to Nippersink Lodge is 1/2 miles west of Twin Lakes, and 1 mile north and 2 miles east of Genoa Junction, both on the C. & N. W. R. R.

Chicago Office: 201 East Ontario St. Phone Superior 8552