

NOTED ARTIST SHOWS PORTRAITS



—Photo by Fernand de Gueldre

Miss Graziella Jacoby of Chicago, who has met with such success in New Orleans with a recent exhibit, will show some of her portraits that have called forth much favorable comment at the Moraine Hotel, Highland Park, August 30 and 31. Her works and strong and charming personality won over many friends during her stay in the Crescent City and created much interest amongst the critics.

She is capable of sketching with astonishing rapidity and facility and has a remarkable ability for portraying the character and individuality of the sitter.

Many celebrities have commissioned her, amongst them Marilynn Miller, Frank Bacon, Charles Kennedy, author of "The Servant in the House," Nance O'Neil, Fokine and Fokina, famous Russian ballet dancers, and many leading society women and prominent business men.

Kenilworth Happenings

Miss Alice Shipman is spending the week with Miss Frances Dennett at Lake Katharine, Ill.

Miss Patty Foresman left Saturday for Waukazoo, Mich., to spend two weeks with Caroline Jane Everett.

Mr. and Mrs. Dwinell Slater returned Monday from a visit with Mrs. Ralph Starrett at Eagle River, Wis.

Mrs. W. Irving Woodward left Wednesday for Gettysburg, Pa., to visit Mr. and Mrs. Richard Broker.

Mrs. E. J. Hicks returned Tuesday from a week's visit with Mrs. W. Noble Gillett in Ludington, Mich.

Mr. and Mrs. George R. Benson who have been touring the east will return home the latter part of the week.

Mrs. C. G. Burnham and son, David, left Sunday evening, with Miss Geraldine Gillis, for Stillwater, Minn.

The Kenilworth club announces a summer dance on Friday, August 25.

Mrs. Alex Joslin is entertaining at a luncheon on Saturday, August 26.

Mrs. Frank G. Ely entertained at luncheon on Tuesday of this week.

**PAIGE
JEWETT**
**SOLD
AND
SERVICED**

By

**TRACY HOLMES
MOTOR CO.**

1027 Davis St.
Evanston, - - - Ill.
Phone 4903

In Our Hands

you can safely leave every detail of the final arrangements. That's what we mean by a COMPLETE service.

No matter in what part of Evanston or North Shore you live, our service is available. You do not call on members of our profession very often, but when you do, you can't afford to take a chance.

PHONE
EVANSTON 600

906
CHICAGO
AVE.

**Ross D.
Heaps**

**DISTINCTIVE
FUNERAL
SERVICE**

**ROOFING
NU-TILE**

PURNELL & GUY

Roofing Contractors

Over the old wood shingles our specialty

818 Lake St.

Evanston, Ill.

Phones

Office—Evanston 930

Residence—Evanston 8066

"My Place Up At the Lakes"

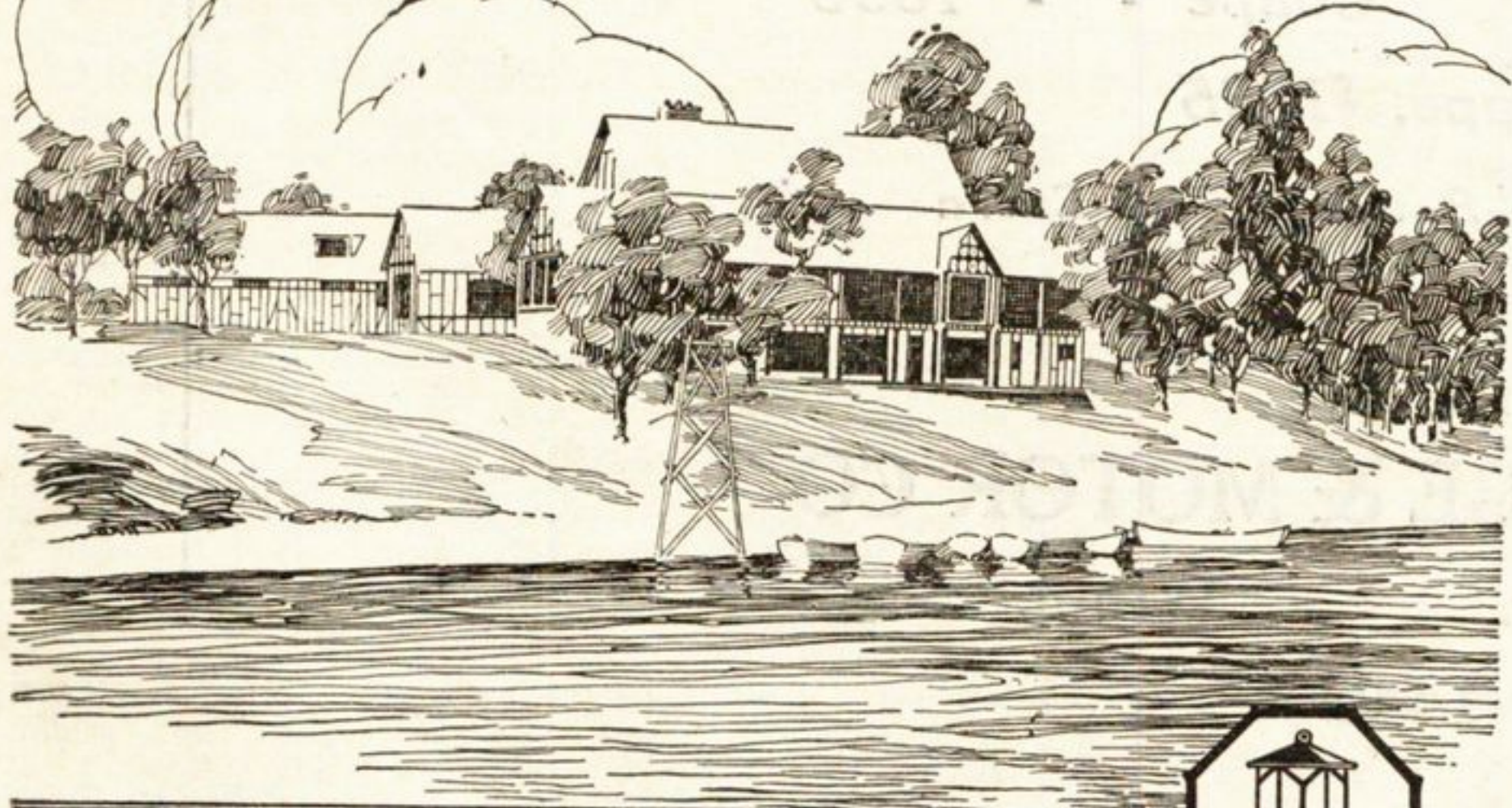
What and where shall it be, your place up at the Lakes? A shanty or shack at a crowded summer resort, thrown in with any one who may chance that way, or your own little place of the better sort, in a location that gives you contact with the kind of people you like and want to associate with?

Investigate the advantages of Nippersink Residential Park, on Lakes Tombeau and Benedict in the Southern Wisconsin Lakes region—eight miles southeast from Lake Geneva—convenient and economical to reach from Chicago and other points.

Nippersink Residential Park is for people who appreciate good things, and who are accustomed to good things. It offers much to the man who wants his selection of his first summer place to be the right one, without regrets or a feeling of uncertainty about his choice.

Write or phone us for complete information. Investigate Nippersink Residential Park—it is the place you have been looking for.

In connection with Nippersink Lodge there are a number of new cottages with running water, toilets, etc., a clubhouse, a central dining hall and a splendid 18 hole golf course. Cottage reservations are now available for your vacation.



NIPPERSINK LODGE ASSOCIATION
GENOA JUNCTION, WISCONSIN

The entrance to Nippersink Lodge is 1/2 miles west of Twin Lakes, and 1 mile north and 2 miles east of Genoa Junction, both on the C. & N. W. R. R.

Chicago Office: 201 East Ontario St. Phone Superior 8552

**To ride over the North Shore Line
is to enjoy all the advantages of the
Most Advanced Railroad Methods**

Comparison of the North Shore Line with high-grade railroads throughout the country serves to emphasize the splendid service rendered by this road. In equipment, reliability of train service, and personnel—the Road of Service has always impressed travelers with its uniformly high standards.

The safety and comfort of passengers is assured through the employment of modern mechanical safeguards and alert trainmen.

Fast service---conveniently frequent!

Limited Trains for Milwaukee leave Winnetka every hour from 5:54 a. m. to 12:54 a. m.



Bus Line to Lake Geneva

New and delightful scenic route to Lake Geneva. North Shore Trains to Kenosha, and connections there with big, roomy busses for beautiful Lake Geneva. Trains leaving Winnetka at 6:54 a. m., 7:54 a. m., 11:58 a. m., 12:54 p. m., 3:54 p. m., 6:54 p. m., and 9:54 p. m., Daylight Saving Time, make prompt connection with busses.

Chicago North Shore & Milwaukee R. R.

Winnetka Ticket Office, Elm Street
Phone Winnetka 963