

LAUNCH CAMPAIGN TO AID LOCAL HOSPITAL

Staff of Physicians at St. Francis Call For Contributions

More beds for St. Francis hospital, is the challenge call of a fund campaign set in motion this week by the staff of physicians at the Evanston institution.

The urgent need of greater hospital facilities along the entire North Shore from Rogers Park to Highland Park and the districts west, has long been realized but never been brought to the attention of the population living in this area, the workers declare. There are only two class "A" hospitals within a territory of 200 square miles with a total of 250 beds, instead of the 1,000 needed. A shortage of 750 beds is a serious matter in ordinary times, but doubly and trebly so in periods of epidemics.

St. Francis Hospital, in 12 years, grew from a twelve-bed hospital to a 100-bed hospital. An average of 2 patients are turned away every day for lack of space. Private rooms are temporarily changed into wards and hall beds pressed into service, but only a new wing, accommodating another hundred beds, can remedy this deplorable condition.

In the hope of convincing others of this necessity and enlisting their active co-operation, the staff doctors of St. Francis Hospital have started a movement to help the Sisters erect this much-needed wing. The Sisters went in debt to purchase the original property and put up the present building. With the money saved on salaries (no Sister receives any pay whatsoever) they managed to pay off the great part of these debts. They are willing to burden themselves again with a large mortgage, but the doctors feel that they should be given a fair start by the collection of a goodly portion of the cost of the new wing.

Never before has an appeal for funds been made by this institution, which to all intents and purposes is non-sectarian (although managed by a Catholic Sisterhood), since more than half of the staff is non-Catholic and at least 50 per cent of its patients are non-Catholics. The long list of total and partial charity patients also includes an equal percentage of non-Catholics.

The growth of the hospital is evidenced by the following figures:
 In 1911, there were 596 patients
 In 1919, there were 1640 patients
 In 1920, there were 2665 patients
 In 1921, there were 3235 patients
 a growth of 600 per cent in 10 years, and there is every indication that the growth in the future will be even more rapid

The maternity department on the fourth floor of the hospital is deservedly popular with the mothers. In 1920, 335 babies were born there. In 1921 the number was 510. Three times the present space would only give fair accommodation. Two babies every 24 hours is the present average, but 3 and 4 within the same space of time is not a rare occurrence.

L. B. SPRINGER SEEKS SEAT IN LEGISLATURE

Wilmette became the center of interest in New Trier political affairs this week with the announcement that Lewis B. Springer, 430 Maple avenue, has entered the race as a candidate for nomination on the Republican ticket as a representative of the Seventh district in the Illinois General Assembly. Mr. Springer will be a candidate at the April 11 primaries, having entered the political arena, it is explained, with the endorsement of the regular Cook County Republican organization.

Springer's decision to become a candidate for the State Legislature is considered particularly fortunate by his friends since he is said to be keenly interested in and thoroughly conversant with the present tax situation. It is emphasized that Mr. Springer has foreseen that the next General Assembly will have much important work to do and that the tax question—said to have become a burden upon the people—will be of the greatest importance.

Mr. Springer is a pioneer of New Trier township having been a resident of Wilmette since 1873, when he located there with his parents. He is well known as an energetic business man and a leader in the Real Estate and Investment field. He has always been active in Wilmette and New Trier civic affairs and is recognized as a formidable candidate in the approaching primaries. He has traveled extensively in Illinois and knows personally many of the men who will be members of the next legislature. He is well known in political and business circles throughout the state.

FIRST AID TALK

Essentials of First Aid were brought to the attention of Winnetka Boy Scouts, Troop No. 2, Monday evening of this week by Dr. Frank W. Blatchford. The talk was both instructive and entertaining. Next Monday evening the Scouts will enjoy a talk on aviation given by Instructor Price, of the North Shore Country Day school.

W. J. MOIR IS ILL

William J. Moir, 848 Ash street, who recently established a real estate business with offices at 556 Center street, has been away from his desk for two weeks because of illness.

BUYS HUDSON SEDAN

E. B. Taylor, of the E. B. Taylor Hardware company, Center street, this week purchased a new Hudson Sedan. The car was delivered Monday.

FRANKLIN Sales and Service

The car everyone would like to own
Gage Motor Sales Co.
 Phone 5700 1629 Orrington Ave., Evanston

Dr. Charles E. Geisse Osteopathic Physician

Phone Wil. 2052 1150 Wilmette Ave.
 RESIDENCE PHONE 537

George W. Oldfather Speaks at Wednesday Lent Service

"The Place of Faith in the Christian Life," is to be the subject of a talk by George W. Oldfather, Wednesday evening, March 8 at the Winnetka Congregational church, representing the second talk by a layman in the series of six Wednesday evening services to be held during the Lenten season.

Wednesday of this week John Venema spoke concerning "The Place of the Bible in the Christian Life." Every resident of Winnetka is invited to these services.

EXTENDS BUSINESS

Peter Demopolis, of the South Water Fruit market, is opening a similar market in Glencoe. The new place is expected to be open for business within another week.

A new assortment of Ladies' and Misses' Spring Dress Prices Right.

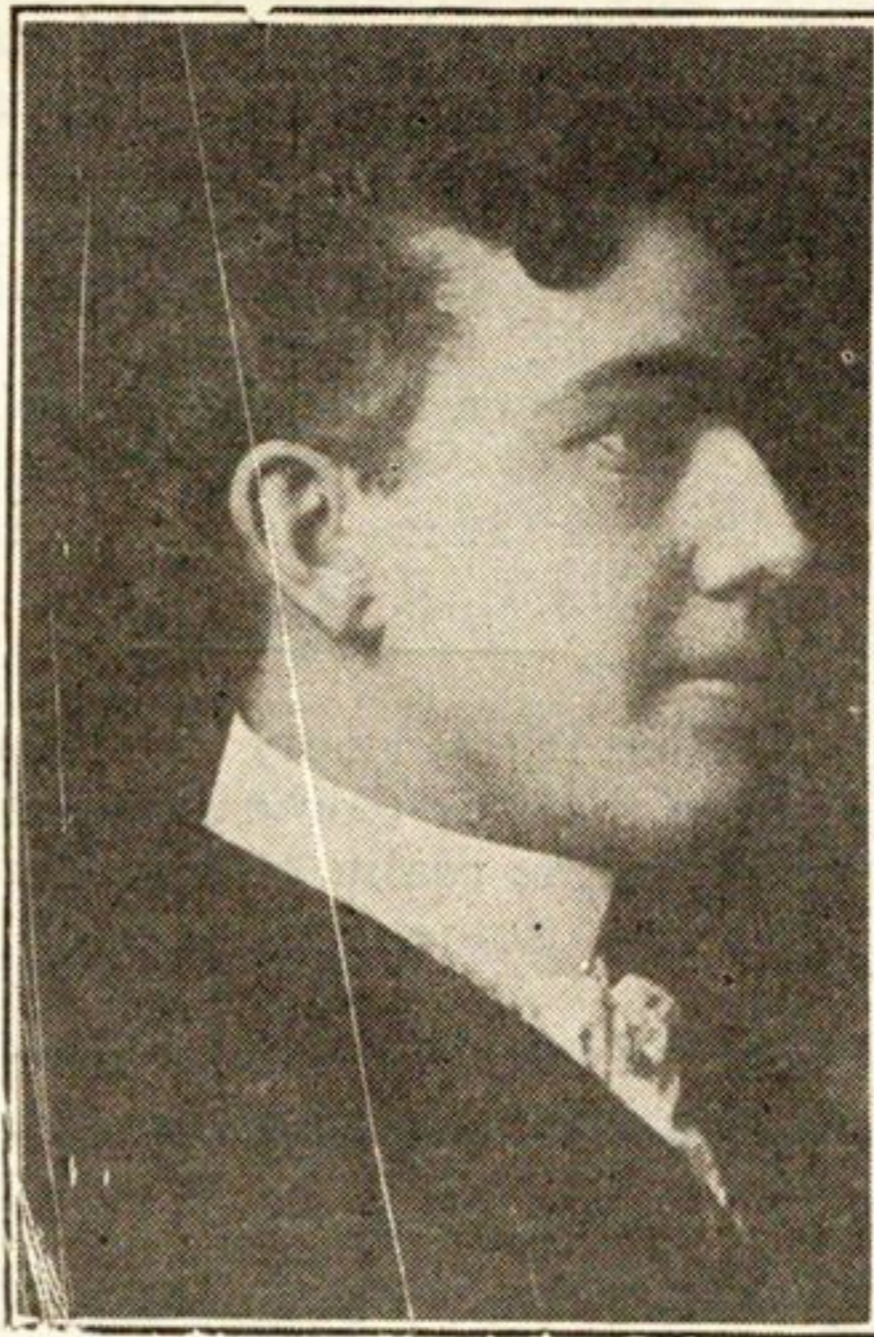
UNIQUE STYLE SHOP

B. Coplan, Proprietor
 1126 Central Avenue
 Wilmette Phone Wil. 2403

JOURNALISTS ON TOUR

The recently organized class in Journalism in the Winnetka Public schools, under direction of Charles S. Kinney and Miss Florence Brett,

will make a tour of inspection at the Chicago Tribune offices and plant Tuesday evening of next week. The class edits the public school paper printed in the school shops.



Wm. H. Scott Undertaker

I am now in business for myself, conducting the ONLY undertaking establishment in Wilmette. Conscientious service is my motto.

1124 Central Avenue WILMETTE

No longer with the Western

Phone Wilmette 654

Taste is a matter of tobacco quality

We state it as our honest belief that the tobaccos used in Chesterfield are of finer quality (and hence of better taste) than in any other cigarette at the price.

Liggett & Myers Tobacco Co.

"I like 'em"



Chesterfield CIGARETTES

of Turkish and Domestic tobaccos—blended

"They Satisfy"



Why "Station to Station" Long-Distance Calls Cost You Less

You can save about twenty per cent on your toll bills by using our "Station to Station" long-distance service. To complete a call for a telephone number or for a listed telephone rather than for a particular person requires less time and avoids holding the line at the distant point while search is made for the person wanted.

Here are some sample forms for putting in "Station to Station" calls.

Signal the operator in the usual way and ask her for long distance. When the long-distance operator answers say:

"Give me St. Louis; Main 1234. Will talk to anyone."

"Give me Milwaukee, Wis.; Smith, Brown & Company. Will talk to anyone."

"Give me Louisville, Ky.; James Robinson's residence, 648 Mulberry St. Will talk to anyone."

In a very great majority of cases it is found that a call made in this way either reaches the particular person wanted or the person who answers can take the message or handle the business.

Specimen rates for "Station to Station" and other classes of long-distance service may be found in the telephone directory. The manager will be glad to give additional information.

ILLINOIS BELL TELEPHONE COMPANY

2 Big Stores

1559 Sherman Ave.

PALACE

Cash Meat Market

EVANSTON, ILL.

Phone Evanston 2720

Quantity Buying and Cash and Carry Makes Low Prices and High Quality Possible

Very Best Native Porterhouse Steak . 45c
 Very Best Native Rib Roast of Beef . 32c
 Choice Cut Native Pot Roast 15¹/₂c

PEACOCK HAMS 32¹/₂c | PEACOCK BACON 32¹/₂c

Fancy Pork Loin Roast 23¹/₂c
 Fancy Milk Fed Leg of Veal 28¹/₂c
 Fancy Leg of Spring Lamb 36c
 Very Best Native Sirloin Steak 35c