

NEW TRIER QUINTETS WIN DIVISION TITLE

Second Place Clinched by Evanston High

| Standing of North Section Teams | | | |
|---------------------------------|-----|------|------|
| Heavyweight Class | | | |
| Team | Won | Lost | Pct. |
| New Trier | 5 | 1 | .833 |
| Evanston | 3 | 2 | .600 |
| Waukegan | 2 | 4 | .333 |
| Deerfield | 1 | 4 | .200 |
| Lightweight Class | | | |
| New Trier | 5 | 1 | .833 |
| Deerfield | 3 | 2 | .600 |
| Waukegan | 2 | 4 | .333 |
| Evanston | 0 | 5 | .000 |

BY MERRILL MANNING

New Trier High school grabbed the basketball championship of the North Division of the Suburban league Tuesday when she defeated Waukegan twice, the heavies winning, 34 to 29, and the lights registering a 25-to-12 victory. These victories give New Trier the championship in both the light and heavyweight classes.

The heavyweight game was closely contested from start to finish, and poor basket shooting by the Waukegan quintet was all that saved New Trier from losing. Leffingwell, New Trier center, and Kenyon, Waukegan center, were the individual stars of the encounter. The tally at the end of the half was 12 in favor of New Trier.

The lightweight battle was never in doubt, the champion New Trier lights leading all the time. The score at the end of the half was 20 to 8 in favor of New Trier.

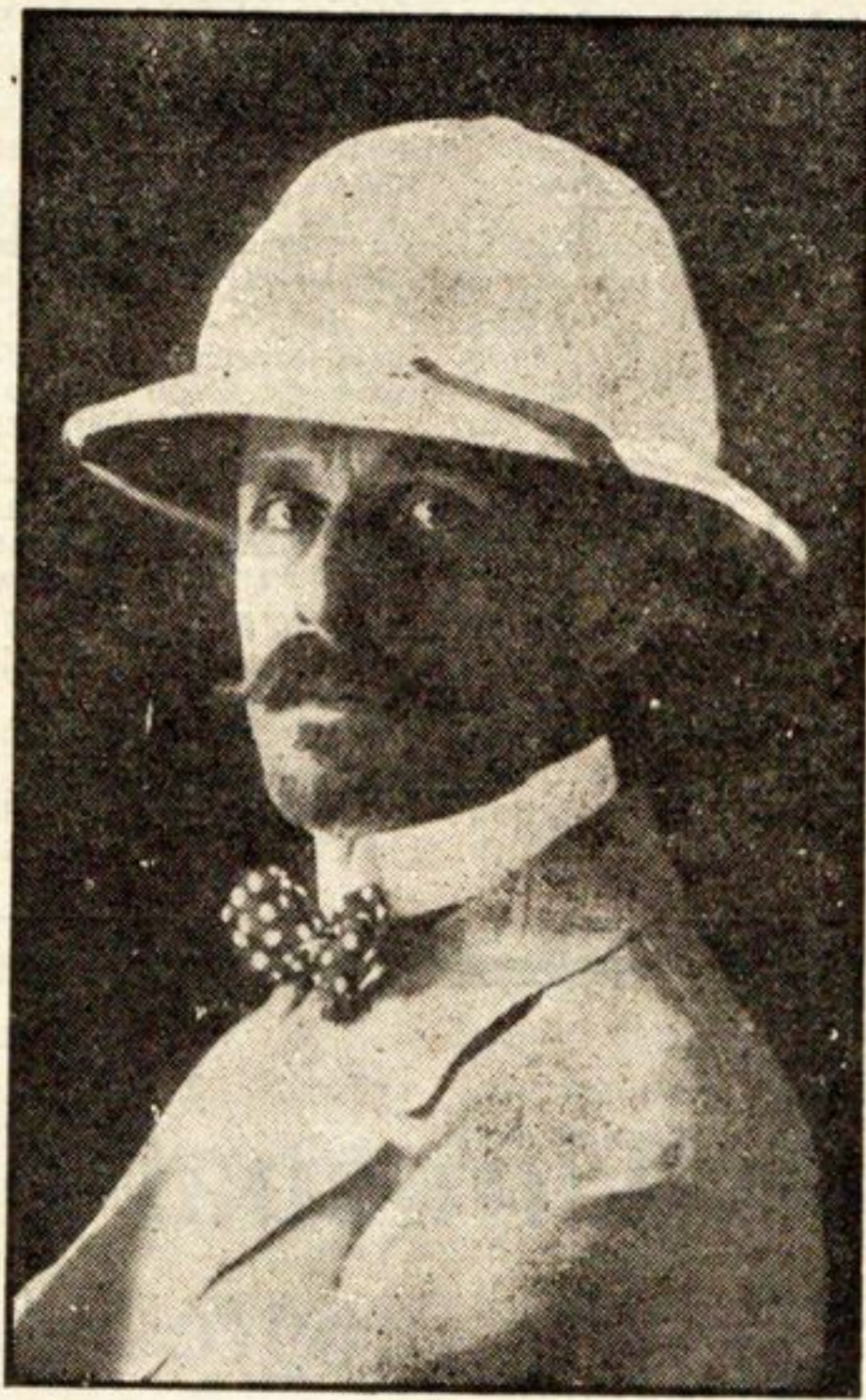
OPEN BRANCH REALTY OFFICE

Gilbert Johnson and Brother, north shore realtors, announce the opening of a branch office in Winnetka located directly east of the Chicago and Northwestern railroad station at No. 2 Prouty Annex. The offices will be under the management of Tom Brown, with Raymond Orwig as assistant. The branch office will conduct transactions in properties in Hubbard Woods, Winnetka and Indian Hill.

The regular monthly meeting of the North Shore Catholic Woman's League was held on February 2, at the Winnetka Woman's club.

HOLMES TRAVELOGUES BEGIN FEBRUARY 17

The Burton Holmes Photo-Stories of Travel begin here February 17. His five Travelogues will be given, one subject each week, in the following order: "Mexico," "Classic Japan," "Inspecting the Philippines," "Going



Burton Holmes

Abroad at Home"—devoted to the beauty spots and wonderlands of the United States and Canada—and "Around the World," which is a most comprehensive moving-picture journey around the globe by a novel route, showing the "high-spots" of interest and pictorial beauty. A more than usually beautiful series of colored still pictures will be shown during the intermissions between the moving pictures, in this last "wonder-journey."

There will be two courses, exactly alike, on Friday evenings and Saturday afternoons, beginning respectively February 17 and 18, at Orchestra Hall.

AUBURN BEAUTY-SIX

7-R. Continental Motor

\$1695 F. O. B., FACTORY

C. H. BRIGGS

Evanston 140 1549 Sherman Avenue

Hear the Edison

New Recreation
Records Just Out

Prices { \$167.50
\$200.00
\$295.00

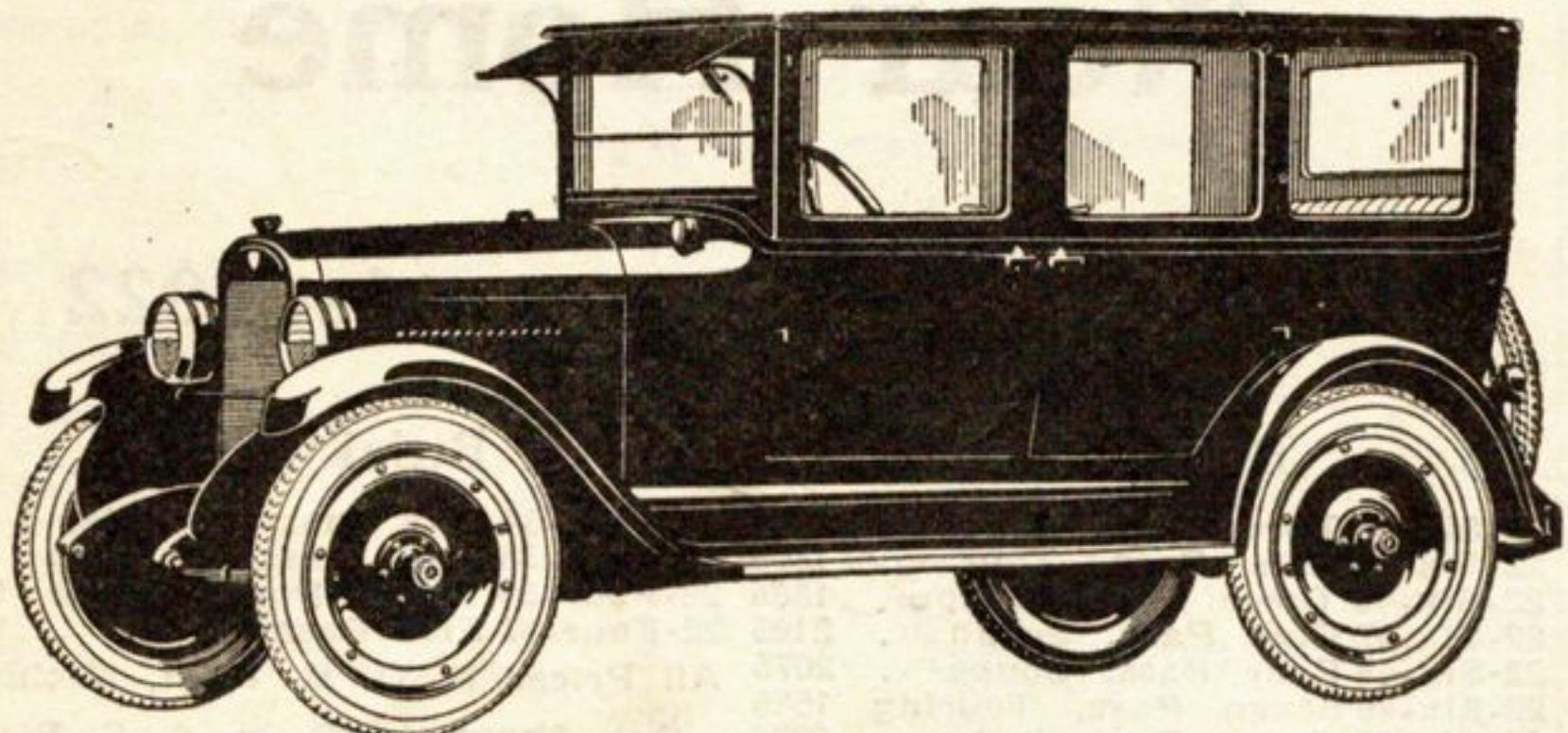
and up

Patterson Bros
EVANSTON CHICAGO

828 Davis Street

Evanston 654

DON'T BUY THAT NEW CAR
Until you have seen



THE 1922 SERIES OF THE NEW
GOOD MAXWELL
ALL OPEN AND CLOSED MODELS ON
DISPLAY AT

JANS-LAMKE MOTOR CO., Inc.

1013-15-17 Davis Street, Evanston

HAYNES---MAXWELL

Peter N. Jans

Phone Evanston 4250

Earl L. Lamke

PRICES—DELIVERED

Touring\$965.00 Coupe\$1485.00

Roadster965.00 Sedan1595.00

Including disc wheels and cord tires

FORD

THE UNIVERSAL CAR

| | |
|--------------------|----------|
| TOURING | \$348.00 |
| ROADSTER | 319.00 |
| CHASSIS | 285.00 |
| SEDAN | 645.00 |
| COUPELET | 580.00 |

(Prices F. O. B. Detroit)

Starter and demountable rims standard equipment on Sedan and Coupelet. Other types \$25.00 for demountable rims and \$70.00 for starter.

Skokie Motor Co.

554 LINCOLN AVENUE

WINNETKA, ILL.

Phone Winnetka 288



To CHICAGO on the

North Shore Line

The speed, the comfort, and the reliability of the North Shore Line render it the logical route for all who demand the best in transportation service.

The large, smooth-running electrics and the alert, attentive employes offer you the ultimate in comfortable travel.

You can be sure of a prompt arrival.

Acquaint yourself with this convenient route.

Limited trains for Chicago leave Winnetka every hour from 6:41 a. m. to 1:41 a. m.

Express trains for Chicago leave Winnetka every half-hour from 6:34 a. m. to 12:04 a. m.

Chicago North Shore & Milwaukee R. R.

Winnetka Ticket Office, Elm Street

Phone Winnetka 963