

and join with your neighbors in the annual jubilee.
Garages, taxi-cab stations and ice companies will of necessity be open and continue business as usual. In every instance, however, the garages, taxi firms and ice companies offer to co-operate in any way possible to insure the success of the outing. Garage owners in all the villages have volunteered the use of trucks for transportation, free of charge.

"DOPE" ON WILMETTE AND GLENCOE NINES

Advance Information on Rival Aggregations Who Furnish Entertainment on New Trier Day

Prospects for a real baseball argument on New Trier day between Wilmette and Glencoe are very bright, judging from the lineups the teams will put on the field. The following is a fair comparison between the rival nines:

Catcher—The receiving end of both teams is very strong. Zeutchel of Wilmette enjoys a small advantage in speed but the Glencoe backstop is a better batter and a cooler head.

Hurlers Even

Pitcher—Borre of Wilmette and Roy Wilson of the opposing nine hurl on the same plane. Neither is blessed with a great amount of speed; both are exponents of the curve style of pitching. They are also good batters.

First base—The initial sack furnishes another 50-50 proposition. Robinson, the Wilmette defender of the position and Clavey of the Glencoe aggregation are both good on the defense and can be depended on for a hit in a pinch.

Second base—Glencoe enjoys a big advantage at the keystone sack. Stockel is hitting a fast pace at present. His hitting is above the 400 mark, his defense is accurate, and a surprising amount of stolen bases are credited to him because of his speed. Reynolds of Wilmette has improved his game lately, but not be compared to his Glencoe opponent.

Golbach Has Edge

Shortstop—Golbach of Wilmette and his enemy, Schroeder, present another argument. It will be a case of "nip and tuck" between the two players with Golbach on the favorable end of the comment. Schroeder is a heavy hitter, with an edge on "Goldie," but has never been able to bat against Borre.

Third base—Wilmette excels at the far corner. Rosberg is a better batter, a superior fielder and a trifle faster than Culver of Glencoe.

Outfield—Wilmette is a better defensive team in the outfield with Barrows in left, Estes in center and Braun in right field. Glencoe can outhit the Wilmette trio however, which counteracts the disadvantage in defense.

Both teams display a fair amount of "inside" baseball. The summary of the entire affair is—Can Glencoe with a heavier hitting team defeat Wilmette, a team boasting a stronger defense?

NEW UPHOLSTERING BUSINESS

Fred Nitto, upholster and cabinet maker, is preparing for the opening shortly, of an upholstering and furniture repair establishment in the village. The temporary address of the business is 1204 Central avenue. Mr. Nitto was until recently connected with L. A. Perrault, Upholsterer.

DRIVES 26.6 MILES ON TWO QUARTS OF GAS IN FRANKLIN AUTO

In these days when the market price of gasoline is a question that strikes pretty close to the heart and pocketbook of the average motorist, the results obtained by sixty-four non-professional drivers during the month of May in an economy contest conducted in New Haven, Conn., are of more than passing interest.

The contest was staged by Cowles Tolman, the local Franklin dealer in New Haven, and prizes were offered for the highest mileage obtained with the Franklin car on two quarts of gasoline. In all, sixty-four persons competed—many of them with little or no driving experience. One old man, who had never sat back of a steering wheel before in his life, was not only able to drive satisfactorily but secured 12.8 miles on the two quarts of gasoline. The winner of the contest obtained 26.6 miles on two quarts, or at the rate of 53.2 miles to the gallon. The average mileage on the two quarts of gasoline was 18.75, or at the rate of 37.75 miles to the gallon.

A HAY CROP RECORD

By far the greatest hay crop ever grown in the Oneco section of Connecticut is being gathered. The farmers are many thousands of dollars better off than last year. Herd grass is six feet tall; something unheard of. Hundreds of idle mill hands are helping the farmers. All crops are beyond all expectations, except corn.

ELECTRIC LINE HAS NOVEL ARRANGEMENT FOR SAFETY

Economy of labor and space is noted in the erection of a gate-tower on the right of way of the Chicago, North Shore and Milwaukee Electric line midway between the Oak and Cherry street crossings of the railway.

The tower is perched on the roof

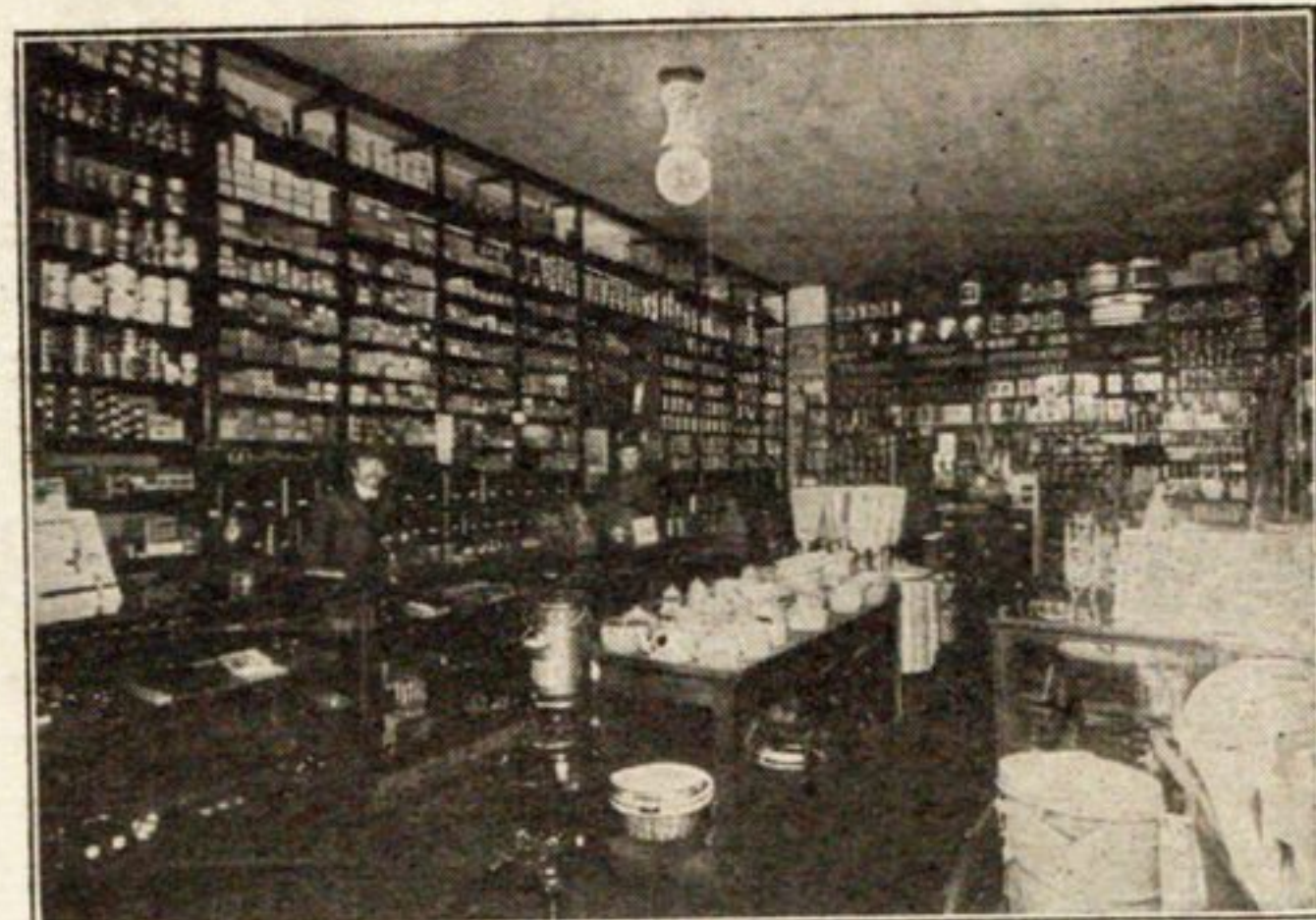
of the long station located between these crossings and will house operating machinery controlling the gates at both points. Two shanties will thus be eliminated and one man will be able to operate the safety devices from the single tower. The tower affords clear vision of the tracks from beyond Indian Hill to the south and north of the Elm street station to the north.

VILLAGE OF WINNETKA, ILLINOIS

Condensed Current Balance Sheet As of July 31st, 1920

ASSETS	Current Year	Last Year
CASH	\$109,859.76	\$124,134.56
ACCOUNTS RECEIVABLE:		
Taxes	\$ 7,958.03	\$ 7,704.10
Special Assessment-Rolls	444,436.95	555,099.01
Special Tax Certificates	7,669.49	5,704.97
Due from County Collector	53,333.44	52,612.80
Due from Electricity Consumers	7,114.49	5,813.85
Due from Water Consumers	365.65	294.75
Due from Sundry Persons	3,848.78	3,312.29
Total Accounts Receivable	\$524,725.83	\$630,541.77
INVENTORY OF COAL AT PLANT	2,198.11	3,669.75
BOND INVESTMENT—		
Electric Fund	25,000.00	25,000.00
Electric Depreciation Fund	72,500.27	58,864.00
Total Current Assets	\$734,283.97	\$842,210.08
LIABILITIES		
SPECIAL ASSESSMENT TIME		
WARRANTS	\$ 4,047.11	\$ 11,331.34
SPECIAL ASSESSMENT BONDS	596,500.00	515,400.00
SPECIAL DEPOSITS	4,616.28	3,091.28
CURRENT SURPLUS OR DEFICIT:		
General Fund	9,798.09	7,738.36
Electric Fund	54,409.95	58,022.36
Water Fund	13,800.02	7,640.32
Electric Depreciation Fund	51,715.73	58,455.98
Water Depreciation Fund	14,590.40	9,880.84
Special Assessment Fund	15,193.61	170,649.60
Total Current Surplus	\$129,120.58	\$312,387.46
Total Current Liabilities	\$734,283.97	\$842,210.08
GENERAL FUND—MONTHLY OPERATION		
BALANCE IN FUND AT BEGINNING OF MONTH	\$ 17,146.63	\$ 4,051.86
ADD INCOME FOR MONTH	4,434.81	14,390.46
Total	\$ 21,581.44	\$ 18,442.32
DEDUCT EXPENDITURES	11,783.35	10,703.96
BALANCE IN FUND AT CLOSE OF MONTH	\$ 9,798.09	\$ 7,738.36
ELECTRIC FUND—MONTHLY OPERATION		
BALANCE IN FUND AT BEGINNING OF MONTH	\$ 55,867.02	\$ 57,478.66
ADD INCOME FOR MONTH	7,817.54	6,543.27
Total	\$ 63,684.56	\$ 64,021.93
DEDUCT EXPENDITURES:		
Operating Expense	\$ 7,265.61	\$ 4,717.88
Merchandise Purchased	84.74	101.58
Construction and Betterments	1,924.26	1,180.11
Total Expenditures	\$ 9,274.61	\$ 5,999.57
BALANCE IN FUND AT CLOSE OF MONTH	\$ 54,409.95	\$ 58,022.36
ELECTRIC PRODUCTION AND COST		
K. W. H. Furnished Consumers for		
Lighting	43,350	32,859
K. W. H. Furnished Consumers for Power	8,119	7,871
K. W. H. Furnished Water Department for Power	53,015	58,012
K. W. H. Furnished Village for Street Lights	6,472	5,763
K. W. H. Used at Station	1,557	1,564
Total Consumption	112,513	106,069
K. W. H. Lost in Distribution	16,895	19,493
Total Generation	129,408	125,562
Operating Expenditures per K. W. H.		
Generated*	.0502	.0320
Depreciation per K. W. H. Generated	.0055	.0049
Loss in Distribution per K. W. H. Generated	.0084	.0069
Total Cost per K. W. H. Sold	.0641	.0438
*After deducting \$770.40 cost of steam used for pumping.		
WATER FUND—MONTHLY OPERATION		
BALANCE IN FUND AT BEGINNING OF MONTH	\$ 17,626.83	\$ 13,097.78
ADD INCOME FOR MONTH	141.91	190.79
Total	\$ 17,768.74	\$ 13,288.57
DEDUCT EXPENDITURES:		
Operating Expense	3,968.19	5,122.90
Total Operating and Fixed Charges	\$ 3,968.19	\$ 5,122.90
Construction and Betterments	.53	125.35
Transfer to Other Funds		400.00
Total Expenditures	\$ 3,968.72	\$ 5,648.25
BALANCE IN FUND AT CLOSE OF MONTH	\$ 13,800.02	\$ 7,640.32
WATER PUMPED AND COST		
Total Water Pumped	58,070	68,833
Operating Expenditures (Per Thousand and Gallons Pumped)	.0683	.0744
Depreciation (Per Thousand Gallons Pumped)	.0037	.0031
Total Cost	.0720	.0775
FUEL CONSUMED		
1920—484 Tons of Coal at \$7.29 per ton	\$ 3,528.36	
1919—464 Tons of Coal at \$5.32 per ton		2,468.48

* These figures are in Red.



Now What?

With a large new stock of Pyrex Ware on hand our ALADDIN WHITEENAMEL and ALUMINUM WARE, now billed, will fill our 14 foot high shelving on the west wall of our store next week and then some, just in time for your need.

J. F. ECKART CO.

Phone Winnetka 844 736 Elm St.

We'll dress you right from the ground up. Right prices too.



When you see a man wearing a coat that sags, and trousers that just reach his shoe-tops—cut short, because they have worn out at the bottom, you put him down for a failure.

You would not give him a job nor recommend him for a position. If you had him hired, would you raise his salary?

The prosperous man is always well dressed; dress well, and you will prosper.

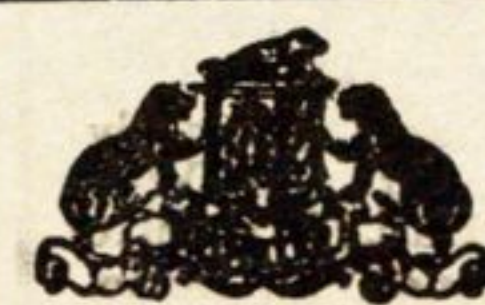
If you are feeling purse-proud, come in and order one of our tony suits. If the pocketbook is lean, we can make you look good for a moderate sum.

Wear our good "Nifty" clothes.

J. H. DETHLOFF

GENTS' FURNISHINGS

Phone 1077 786 ELM ST., WINNETKA



FURS

Now Showing a Complete Line of Furs for Fall and Winter Every article made in my own establishment by expert furriers and every garment guaranteed

Anything in the Line of Fur Wraps Made to Order Promptly

LEAVE ORDERS NOW

MEYER MILLER

Telephone Randolph 1768 15 East Washington St., Chicago

Venetian Building