

HOW IS YOUR MONEY GOING TO BE SPENT?

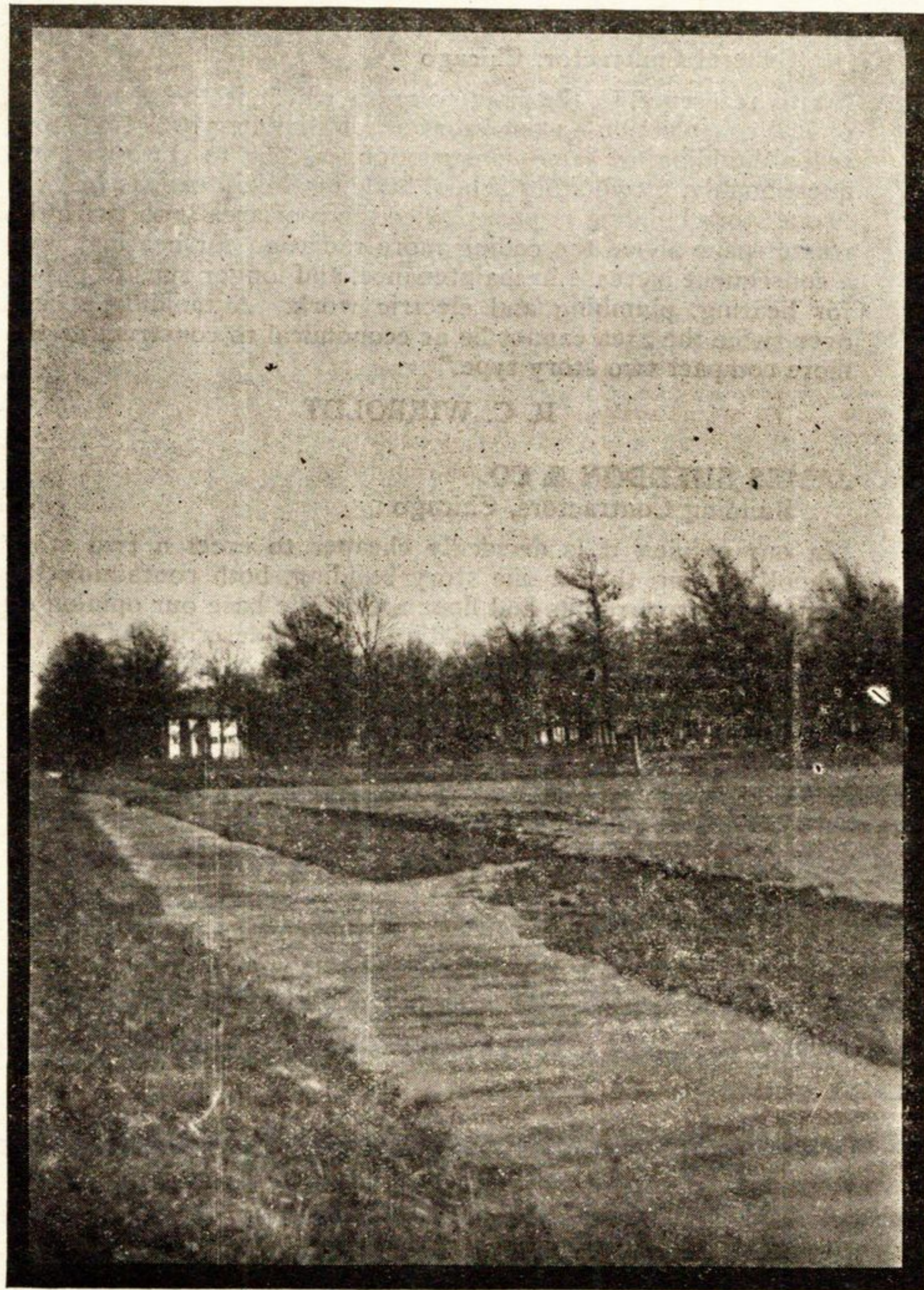
Comparative Statement of Cost of Purchase and Preparing School Sites

	Horace Mann Site	West Elm Site
Purchase price all additional land \$75,000 with minimum credit in sale of 4 houses \$10,000 (Options have been obtained)	\$65,000	
Paving, Sidewalks, Sewers, Water main representing only amount chargeable to school site fund based on School Board's own figures		\$35,732
Purchase 5 safe, standard Busses		25,000
Filling, Drainage, Tiling, preparing land	1,000	49,000
	\$66,000	\$109,732

WEST ELM ST. SITE WOULD COST YOU OVER \$40,000 MORE

Vote for the Less Costly Enlarged Horace Mann Site

These pictures illustrate necessity of expensive drainage and admitted need of paving, sidewalks, sewer and water facilities to redeem swamp land of West Elm Street proposed site.



You have to pay over \$20,000 additional taxes every year to maintain and operate the Bus Service if school is located at West Elm St. Site