

No Car Too
Good—No Home too
Fine for a

Pro-slate

PRIVATE GARAGE

A garage that will enhance the surroundings of any home—a garage that will house your car perfectly—a garage that gives you service and saves you money.

And better still—we can deliver a Pro-slate garage to your home in just a few hours, in sections ready for speedy erection.

Pro-slate garages have rough stucco-like, moss-green walls, paneled off by English timber work; a dull Indian red, crushed slate roof; the building itself is just the right design.

Protection From Fire and Weather

Pro-slate garages with their outside finish of crushed slate rock are fire-safe. They are weather and wind proof. There are no cracks in the Pro-slate walls to open in dry weather and let in the dust. The beautiful stucco-like finish never requires painting, thus eliminating upkeep expense.

Permanent

Pro-slate garages are sturdily built to give long years of service. They come to you in sections all ready to be erected in a few hours time. The woodwork is already painted; the roofing is a part of the roof panels themselves;

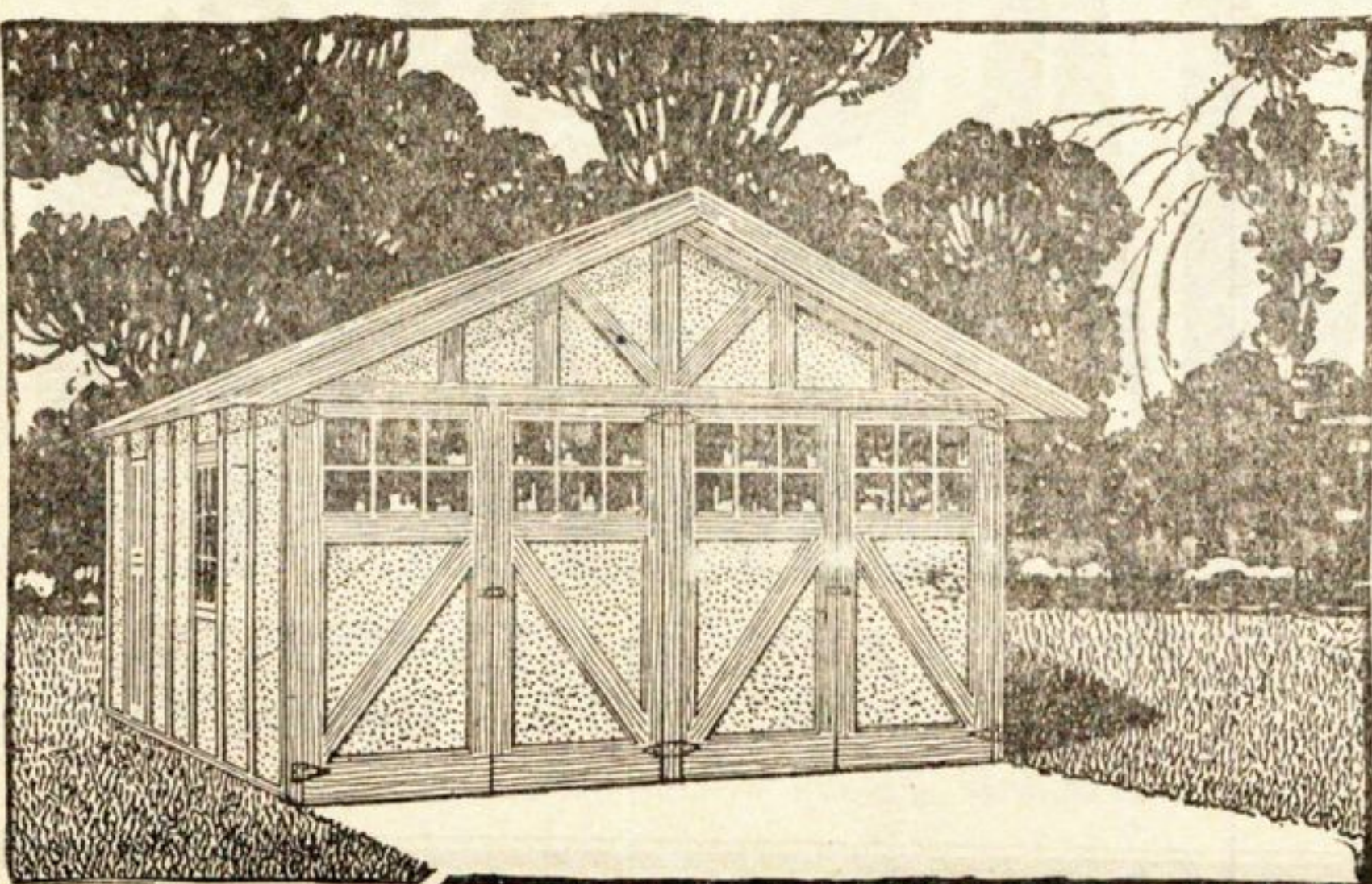
the doors and windows are all glazed; and all hardware is included.

Garages for Large and Small Cars

Many sizes of garages are included in the Pro-slate line. There is one of just the right dimensions to fit your requirements. The Pro-slate Ford Special is illustrated at the top of this space. The double garage and the Extra Long single garage are shown below.

Remember Pro-slate garages are ready for delivery to you today—no delays.

You must see a Pro-slate Garage to really appreciate its beauty and its wonderful construction. Call and inspect our exhibit. Make it today if you can.



Hubbard Woods
Lumber & Coal Co.

Railroad Near Scott Avenue
Phone Winnetka 452

Under License from Pro-slate Bldgs.,
Inc., Chicago, Illinois

