

## INTERCHURCH PARLEY IN CHICAGO MONDAY

Representatives of all Protestant  
Denominations Lay Campaign  
Plans for Inter-Church World  
Movement

### CHURCH LEADERS SPEAK

Sessions at Hotel La Salle on De-  
cember 8, 9 and 10; Each Church  
To Enter Campaign

One of the biggest and most im-  
portant church conferences ever held  
in Illinois will take place in Chicago  
December 8, 9 and 10. Delegates rep-  
resenting practically every denomina-  
tion will assemble December 8 in  
the Hotel La Salle for a three day  
training conference of the Inter-  
church World Movement. The ob-  
ject is to bring together religious  
leaders to promote church co-opera-  
tion and to take part in the nation-  
wide campaign planned by the Inter-  
church World Movement.

Addresses will be made by a team  
of six leaders of national reputation  
on various phases of the Interchurch  
program. They will be J. W. Coch-  
ran, G. G. Mahy, William C. Covert,  
of Chicago, H. H. Bell, Mrs. Katherine  
Silverthorn and E. L. Waldorf.

#### Series of Conferences

The Chicago conference is one of  
a series of such meetings which will  
be held in every state of the union  
before December 20. By that time it  
is estimated that 10,000 religious lead-  
ers throughout the country will have  
become thoroughly conversant with  
the aims and plans of this movement

for Protestant co-operation. The ob-  
ject is to provide an organization  
through which the various Protestant  
churches can co-operate to their  
mutual advantage.

As a first step the Interchurch  
Movement is engaged on a number  
of careful surveys of religious, social  
and economic conditions, county by  
county, and city by city in the Uni-  
ted States and country by country  
abroad. The results will be collated  
and budgeted in terms of men and  
money. The participating denomina-  
tions then will be asked to determine  
by mutual agreement their individual  
share of responsibility for world  
evangelization, and a united appeal  
will be made by the churches, each to  
its own constituency, for the resources  
in men and money that are re-  
quired.

#### Co-Operation Means Economy

The surveys show what an enor-  
mous economy of time, money and  
human service might be achieved  
through a proper co-ordination of  
their efforts by the various churches.  
The state conferences are to be fol-  
lowed by sectional and local meet-  
ings through which the spiritual mes-  
sage of the Interchurch Movement  
will be carried to towns, villages and  
individual churches.

The movement has been indorsed  
by more than seventy denomination-  
al and interdenominational boards  
and agencies. It also has received the  
official indorsement of the judicator-  
ies, or highest legislative bodies of at  
least ten denominations.

By spring it is expected that the  
vast majority of the 25,000,000 Protes-  
tant church members in the country  
will be officially represented in the  
movement.

GO TO CHURCH SUNDAY

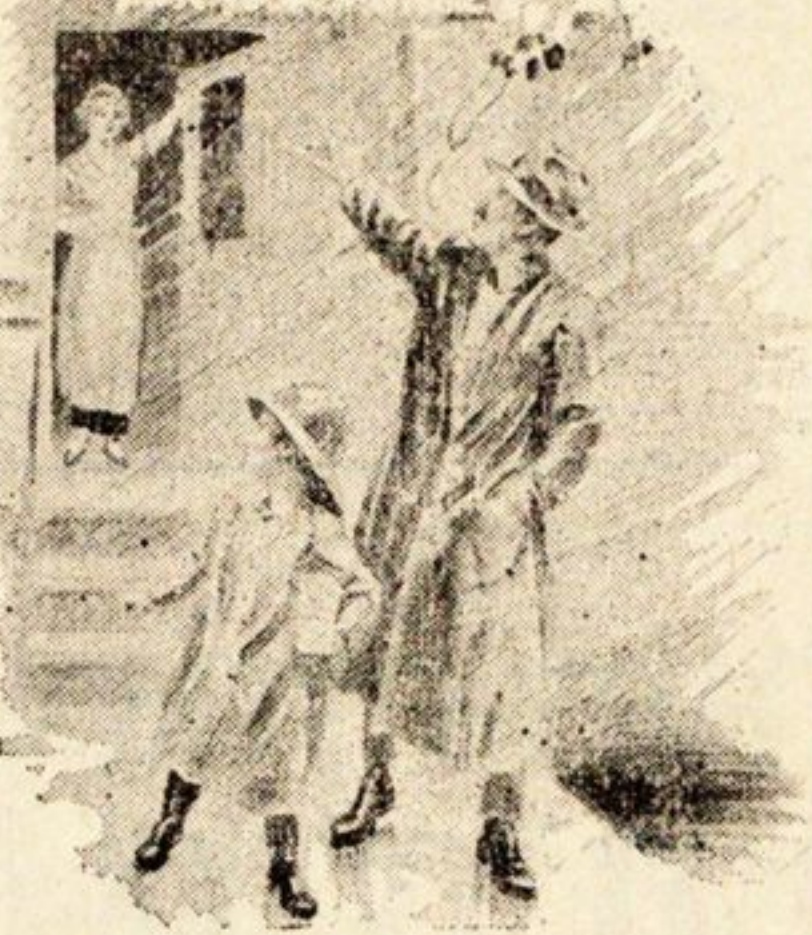
### CREATE MORTGAGE BANK

A federal urban mortgage bank is  
created in a bill introduced in the  
House by Representative William H.  
Hill, of New York. The purpose of it  
is to encourage the buying and own-  
ing of urban real estate, to create a  
standard form of investment based  
on mortgages, to create Government  
depositories and financial agents for  
the United States, and to furnish a  
market for United States bonds. In

charge of the bank would be the Fed-  
eral Urban Mortgage Board, con-  
sisting of the Secretary of the  
Treasury, the Comptroller of the  
Currency and the Governor of the  
Federal Reserve Board.

Congress extended the scope of  
the approaching 1920 census by pro-  
viding that a census of forestry and  
forest products should be taken.  
These subjects were never special-  
ly covered by any past census act.

## A Title Page From Our 1920 Catalog



Rubber Clothing  
Boots and Shoes

"The Right Kind"  
For Every Need

W. H. Salisbury & Co.

Est. 1855  
308 W. Madison St.  
CHICAGO  
Between Franklin and Market Sts.  
Phone Franklin 5744



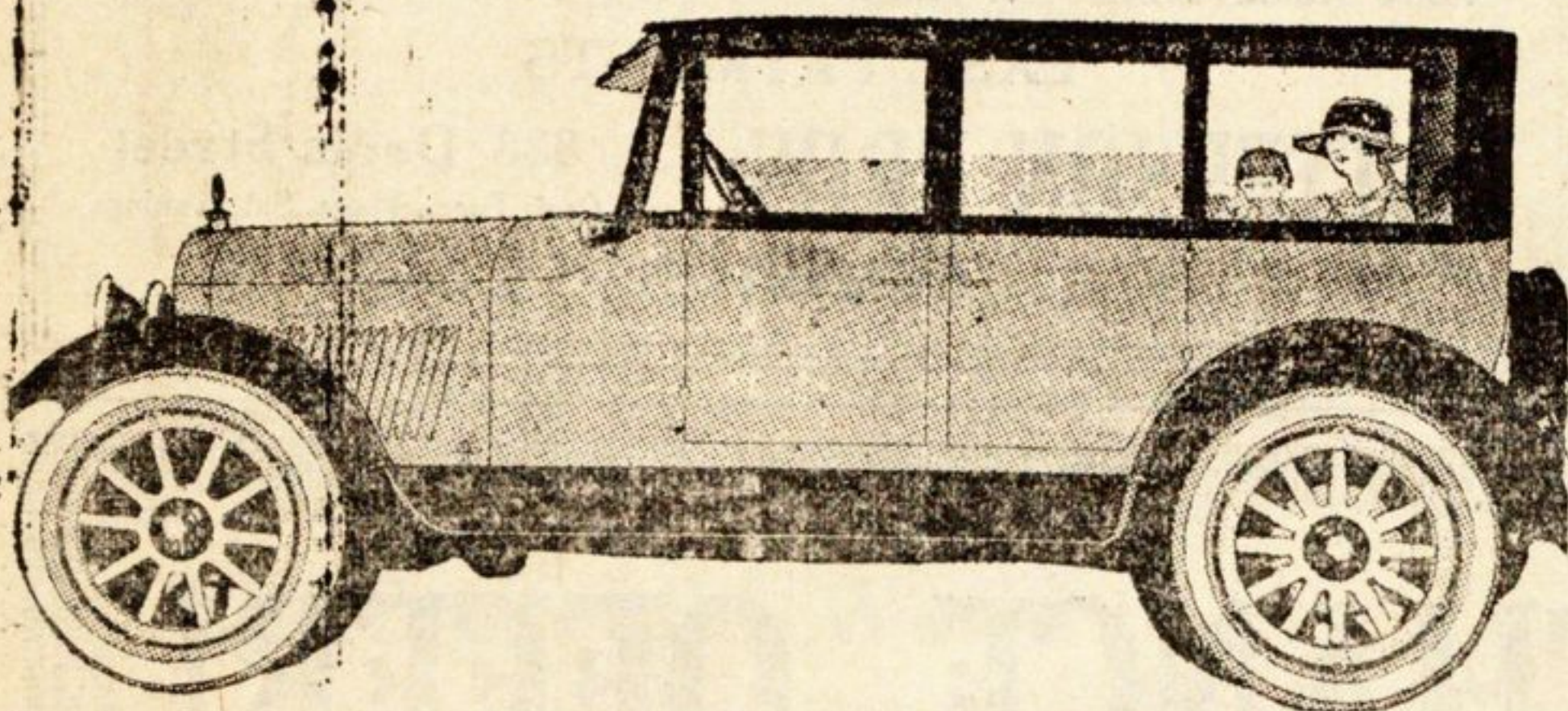
## Keeping Up the Service

WEATHER conditions,  
which mean little to most  
business enterprises, are of grave  
concern to the telephone busi-  
ness. The coming of a storm  
calls for the utmost vigilance on  
the part of those in charge of the  
telephone lines, in order that  
service may be maintained.

The cost of repairing the tele-  
phone lines after a storm often  
reaches large figures. One sleet  
storm did damage in the Chicago  
suburban division which cost  
\$399,914 to repair. Another  
cost \$21,999.

These expenses, in addition to  
operating costs and to those caused  
by the ordinary wear and tear,  
make adequate rates imperative.

CHICAGO TELEPHONE  
COMPANY



# Lexington

MINUTE MAN SIX

## The Lex-Sedan

Beauty and distinction are re-  
flected in every line of this  
new Lexington closed car. It  
is a car of marked attractive-  
ness, suitable for any occa-  
sion, in city or country.

Beautiful coach work is sup-  
plemented by the sturdy, de-  
pendable Lexington chassis  
with all the important Lexing-  
ton improvements, such as  
light weight construction,  
Moore Multiple Exhaust Sys-  
tem, unified frame, non-metal-  
lic universal joints, and one-  
finger emergency brake.

Price, \$2285.00  
FACTORY

Let us show you this remarkable car

## C. M. McDONALD

519 DAVIS STREET

North Shore Hotel Bldg. Telephone Evanston 307  
Service Station: 914 Davis Street Telephone Evanston 224

# The Road of Service

CHICAGO NORTH SHORE AND MILWAUKEE R.R.

## CHICAGO Grand Opera Service

During the Grand Opera Season in Chicago, the  
North Shore Line will maintain special service  
nightly to the entrance of the Auditorium  
Theater, at the Congress Street Station of the  
Elevated. Train leaves Winnetka at 6:52 p.  
m. Dining car attached. After the perform-  
ance, patrons can board trains at Congress  
Street Station.

## MILWAUKEE Majestic Theater

For full particulars of bill see ticket agent.  
Train leaves Winnetka at 5:55 p. m. reach-  
ing Milwaukee in time for a full performance.  
Dining car attached. Returning, train leaves  
Milwaukee at 11:00 p. m., reaching Winnetka  
at 12:52 a. m.

# North Shore Line

