

Activities of North Shore Clubs by Ruth Risley

MONDAY marked the opening of the annual Red Cross Campaign. The week is to be a busy one for Red Cross officials and supporters. Five thousand women all over the country are seeking to enroll a half million memberships for the coming year, and in addition to the campaign for memberships, a final war fund drive for one million dollars is being carried on.

This great drive for "dollar patriotism" which is taking place all over the country is urgently needed by the national organization to complete the relief, construction and other unfinished work overseas, as well as for aid to returned soldiers. The home service department is continuing the work begun overseas, as well as for aid to returned soldiers, and the home nursing department which is teaching the mothers and housewives of the country how to care for the sick, are some of the branches which this campaign will aid.

Mrs. Harry F. Williams has accepted the chairmanship for Winnetka and will be assisted by a committee of the following women: Mesdames Arthur Dean, James G. Weart, Gustav Haas, Leon J. Longini, Mabel R. Windes, Fred B. Thomas, Laird Bell, J. R. Fletcher, Forbes Cadenhead, H. A. deWindt, Lawrence M. Stein, George Massey, Raymond Hardenberg. Mr. William Whitacker will also assist the committee.

On Thursday afternoon of next week, the meeting of the Winnetka Woman's club will be in charge of the Philanthropy department, and a most interesting program concerning "Our Neighboring Philanthropies" will be given. The speakers of the afternoon include Miss Mary Garretson, of the Winnetka Relief and Aid society; Mrs. Victor Sanborn, of the Gross Point Child Welfare station; Mrs. R. E. Parnell, who will tell of the work at Grove House, Evanston; and Miss Clow, of Arden Shore. Mrs. Lyman T. Walker is chairman of the Philanthropy department, and her committee includes Mesdames Lowell Copeland, H. A. deWindt, Victor Elting and John W. Scott. The hostesses will be Mrs. Charles E. Butler, Mrs. Benjamin K. Smith, Mrs. George E. Orr and Mrs. Louis M. Beale.

The plays, by Mrs. Gertrude Kiper, which were to have been presented at this time, have been postponed until January 22, 1920.

The regular meeting of the Parent-Teacher association of the Logan school of Wilmette, will be held Monday afternoon, November 10, at 3 o'clock. Miss Mary Bartelme of the Juvenile Court will be the speaker of the afternoon. Mrs. Winifred Seaver will sing.

One hundred and fifty members of the Wilmette Woman's club were in attendance at the monthly luncheon and business meeting held on Wednesday at the clubhouse. Mrs. Edward Anderson, and her committee including Mesdames Jerzy H. Arden, Thomas Banning, Jr., J. S. Bridges, George H. Duncan, Gordon C. Jeffrey, William J. King, Richard Mulvey, T. J. Moreau, James Nye Macalister, Ralph W. Moody, Alexander Nelson, W. W. Norton, J. Benjamin Ott, Fred S. Rice, Holmes A. Shep-

es to be as full of interest as the delightful series given last month by Mrs. Dwight C. Orcutt.

Mrs. P. B. Kohlsaar, who has charge of the program will talk on "Polyphonic Music", and a chorus of school children will illustrate her theme. A string quartet will assist, and Mrs. Edwin S. Fehheimer will play a Bach prelude and Fugue. The November 20, at 3 o'clock.

The associate alumnae of Northwestern University will hold their annual business meeting and election of officers at the North Shore hotel, Evanston, Saturday morning at 11 o'clock. This association was formed three years ago by the women alumnae of the university, and since that time they have held three

meetings a year. Mrs. Edwin N. Parmelee, the president of the association, expressed the desire that women from all departments would be present at this meeting, which will be followed by a luncheon at the hotel at 12:30 o'clock. The speakers will be President Lynn Harold Hough and Dr. George Craig Stewart. As this is Northwestern's homecoming day a large attendance is expected. The officers for this year are: Mrs. Edwin N. Parmelee, president; Mrs. Frank L. Richardson, secretary, and Miss Enid Hennessey, treasurer.

The Alpha Chi Omega sorority of Northwestern University will hold a "homecoming" banquet at the North Shore hotel on Saturday night for

the alumnae who come back for the game.

The regular monthly meeting of the North Shore Catholic Woman's league was held Thursday at the Winnetka Woman's club. Madame Eda Goedecke was the speaker of the afternoon, her subject being, "Miniatures, the Art of Small Composition." She was assisted by Miss Vera Schuettge, soprano. The hostesses included Mesdames William Dooley and W. A. Kittermaster.

There will be a meeting of the mothers of all of the grades at the Greeley school on Wednesday afternoon. This will be an all-afternoon meeting.

BUY A RED + BADGE

WILMETTE CAFETERIA

1101 CENTRAL AVE.

WILMETTE

Here is a place where folks enjoy eating because the food is so good.

Small Families—We can feed you cheaper than you can feed yourselves during these days of the high cost of food.

Figure out what your grocer, meat man, dairyman, vegetable man and baker will charge you for the same amount of food as would constitute your meal here.

Then consider your work in preparation of the meal, the incidentals, the labor of washing dishes, etc., and you, too, as many others will form the satisfying habit of taking your meals here where pleasing variety is presented to select from, where good, nourishing, zestful food is offered.

Give your appetite a fair chance to assert itself. It will find satisfaction here.

Milburn

LIGHT, ELECTRIC

\$2485

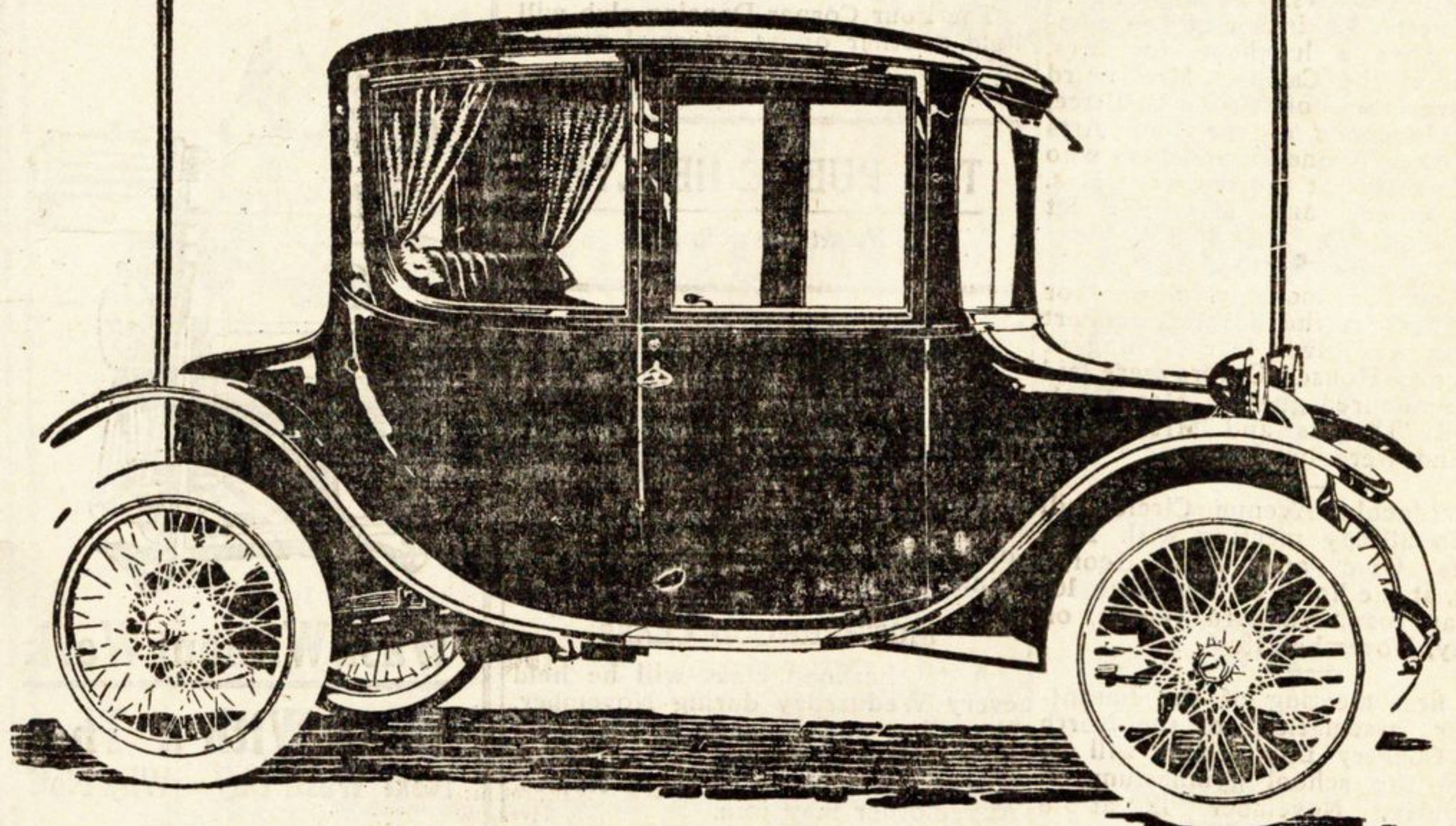
fab. Toledo

Fast and Roomy

The rear seat is instantly adjustable to seat three.

The two front seats are comfortable yet fold entirely away when not needed.

Come in and see the convenience of this seating arrangement. Equipped with electric brake and quick exchange battery.



NORTH SHORE SALES REPRESENTATIVES

GEORGE H. MORRIS. SIDNEY MORRIS

TELEPHONES

Evanston 1048
Rogers Park 761

OFFICE

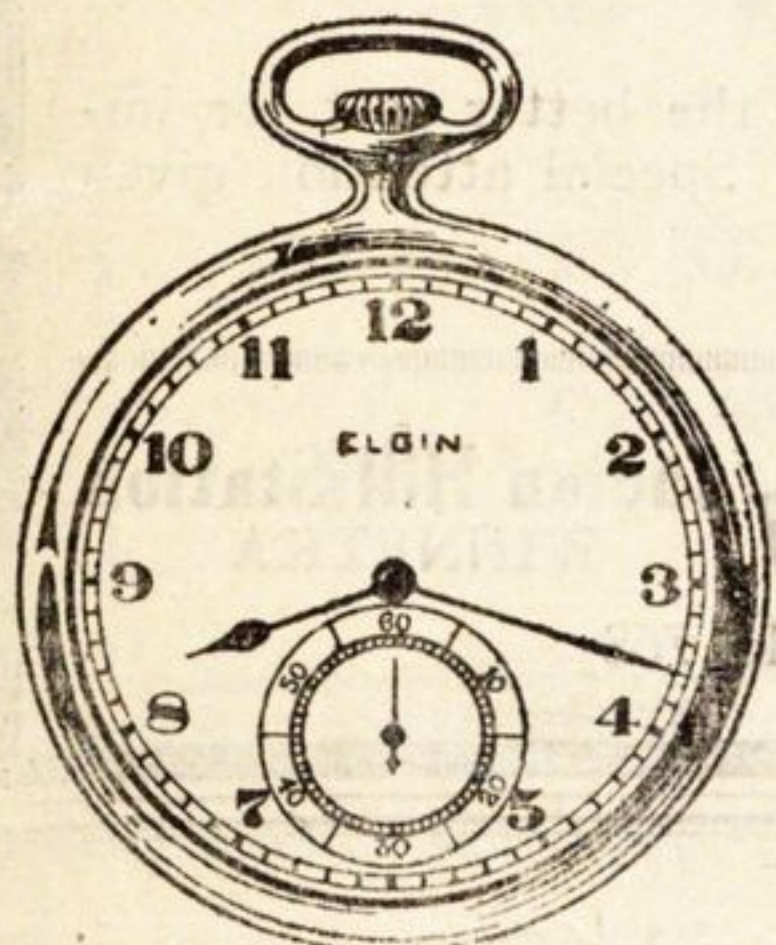
Evanston 1047
Rogers Park 761

Glencoe 203 (Home)

Buy your Electric from the Evanston branch where you get your service

FASHION AUTO STATION Benson Ave. & Clark St.
EVANSTON, ILLINOIS

(Demonstrations Cheerfully given Without Cost or Obligation.)



The Elgin \$35 Watch
Streamline Model

The time-piece that
will always get you
there on time.

This movement has 17 jewels,
3 adjustments. It is fitted in
a 20-year cap case, thin model
(streamline design) cased and
true at the Elgin factory.

We carry a very complete
stock of Ladies'—American
made—Bracelet Watches also

Christmas is close at hand. Do
your shopping early.

A RODELIUS & SON
Jewelers

827 Davis Street, Evanston