

**ESSEX MEETS NEED FOR LIGHTER AUTOS, ASSERTS SHERLAND**

"The general demand of the motoring public for greater economy without the sacrifice of power, endurance or comfort is the greatest factor behind the announcement of the Indianapolis speedway that the 500-mile race in 1920 would be for the cars of 183 cubic inches displacement," said L. A. Sherland, local Essex representative, this week.

"The Indianapolis announcement followed the action of French officials in cutting down the engine size of cars to be entered in the grand prix. The previous limit at Indianapolis was 300 inches and the reduction is intended to foster greater efficiency in passenger cars along the lines exemplified by the Essex.

"The record of the Essex is proof of what may be accomplished along these lines. The Essex motor is only twenty-nine inches in length, overall, and the piston displacement is 179 inches. Nevertheless, due to its advanced design, it develops more than fifty-six horsepower. Thus it obtains greater economy through lighter weight without sacrificing power, performance or endurance.

"As the history of automobile development is largely due to the experience gained in racing, it is only natural that the Essex should have been designed by engineers who have gained world-wide fame for the endurance and speed of their car. Built in the Hudson factory at Detroit, the Essex is the perfected development of years of successful achievement in building fine motor automobiles. The result is an advanced type of efficiency, performance and comfort.

"For years the tendency has been toward a car of this character. This is graphically illustrated by speedway requirements in recent years. Most of the races prior to 1911 were for cars of unlimited piston displacement. In 1911 and 1912 cars were limited to 600 inches which was further reduced into 450 inches in 1913 and 1914. The standard for 1915, 1916 and 1919 was 300 inches.

"This shows the constant search for greater lightness and economy combined with performance and endurance. These results have been achieved in the Essex through perfect balance which eliminates destructive vibration and thus lengthens the life of the car and by an improved design of the gas passages which makes possible the utilization of every drop of fuel fed to the engine.

"The result is a car of long life, light enough to be most economical in upkeep and with such a tremendous reserve of power that the trouble of changing gears is almost eliminated."

**FORD 16 YEARS OLD; EVEN THE HORN TOOTS**

A rear tonneau door, two-cylinder car manufactured by the Ford Motor company in 1903—the year of that company's organization—and in use since that time is still "on the job." It is an eight-horsepower car, has a seventy-eight-inch wheel base, a five-gallon gas tank and is owned by A. C. McCarthy of Portland, Ore.

Of course, the Ford isn't exactly possessed of the latest lines and it is beginning to wear slightly, but mechanically—why, even the aged brass horn works. The machine is now being driven on business trips through Oregon and Washington by McCarthy, who doesn't expect to be in the market for a new Ford for some years to come, since he's kinda got acquainted with the old one.

**LEAVES POSTAL JOB**

Sylvester Fischer, 1618 Wilmette avenue, has resigned his position as carrier at the Wilmette postoffice and is now engaged in carpenter work.

**HERE'S A NEW ONE IN DEMONSTRATIONS**

It remains for the progressive western city of Los Angeles, widely known for its smooth-surfaced thoroughfares, to actually build a bad road within its limits that is fast demonstrating its merits.

Although but a quarter of a mile in length, almost every possible troublesome condition which might be encountered in the roughest country has been included in this road. There are "bad" railroad crossings, numerous chuckholes, ruts, mud, sand, short turns, steps, curbing, etc.

**GO TO CHURCH SUNDAY**

**JUDGE O'CONNOR AND FRANCIS X. BUSCH**

**HIGHLY RECOMMENDED FOR THE BENCH**

Judge John M. O'Connor, of the Superior Court, is a candidate for re-election, November 4, 1919.

Judge O'Connor is finishing a six year term December next. October 22, 1919, he was endorsed for re-election by the Chicago Bar Association by a vote of 1414 for Judge O'Connor to 274 for his opponent.

Although running on the democratic ticket he has received the following endorsements: The Chicago Evening Post, October 24, 1919, editorially said: "Judge O'Connor's record is of the best. Both litigants and counsel familiar with his administration of justice during the six years of his incumbency in the office to which he is now soliciting a return testify to his absolute honesty, legal ability, unbiased mind, patience and capacity for work."

The Chicago Tribune said of him: "He is considered by bench and bar one of the ablest of our judges, a man of judicial faculty and great industry. It is to be hoped good citizens, regardless of party, will not fail to vote for Judge O'Connor at the coming election."

He has also been endorsed by the Chicago Daily News, Chicago Herald and Examiner, Chicago Evening American and Chicago Journal.

Francis X. Busch has been engaged in active practice of law for about twenty years. Among the Judges and lawyers of Cook County, Mr. Busch is considered the ablest trial lawyer practicing in the courts. He is possessed of judicial temperament, wide experience in handling all kinds of litigation, and is more than usually industrious. The presence of Mr. Busch on the Circuit bench will do a great deal to relieve the present congested condition of the calendar of that Court. Mr. Busch has long been identified with all public movements for the general welfare of this community. He has been instrumental in framing and upholding in the courts the present Civil Service and Employees Pension Laws of this State. His experience as a general practitioner, teacher and Dean of one of the largest law schools of the State, and as a legal writer, eminently qualify him for the office of Judge of the Circuit Court. It is confidently felt that Mr. Busch will be a valuable asset to the public service.

He is a member of the Board of Managers of the Chicago Bar Association, and was a member of the Board of Instruction and Legal Advisory Board of Exemption District No. 57.



**WESTERN TOURISTS**

Here is a report of road conditions encountered on the Southern route to California:

Santa Fe Trail across Kansas and Colorado in excellent condition.

Same road in New Mexico and Arizona in bad shape due to recent rains. Conditions fast being remedied. Roads in former state generally good except some bad stretches on the Flats near Wagonmound.

From Winslow west to Flagstaff and Williams conditions improve. Road between Williams and Flagstaff exceptionally fine.

Flagstaff to Grand Canyon—the roads are not very good, but tourists should have no difficulty negotiating them at least until the heavy snow sets in.



**"T. R." Insulation Beats Re-insulation**

"T. R." stands for "Threaded Rubber" of course—the insulation found only in Willard Batteries with the red trade-mark. The insulation that lasts as long as the plates, so that 90% of those who buy The Red Trade-Marked Willard have no re-insulation bills to pay.

There's a lot more of interest to you on this battery question. Come in and talk it over.

Evanston Battery Station  
648-1650 Maple Ave.  
Corner Church Street  
Phone Evanston 4445



**RICKLEFS & SCHUETT CO., Inc.**

**EVERYTHING ELECTRICAL**

1557 SHERMAN AVE. Evanston PHONE 5995

TEL. WILMETTE 1200



1145 Greenleaf Ave. WILMETTE

**SPECIAL REDUCTION SALE**

of ORIENTAL RUGS  
COME IN AND SEE THEM

**Kashian Bros.**



**Thor \$5.00**

brings a Thor Washer or Ironer to your home for 30 days. Balance in small monthly payments.

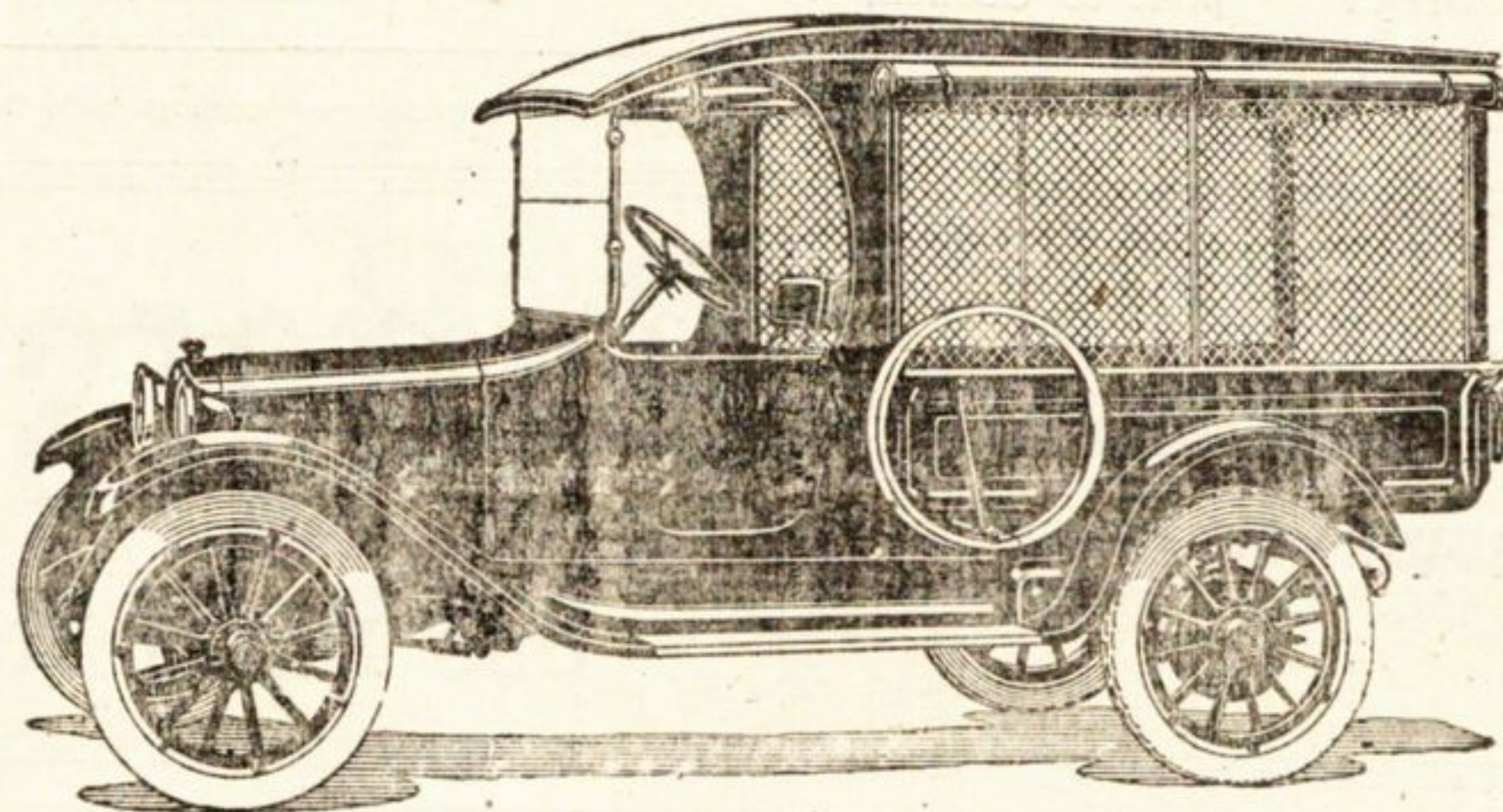
**VACUUM CLEANERS**

**Thor Sales Company**

NORTH SHORE BRANCH

1728 Sherman Ave. EVANSTON

TELEPHONE Evanston 877



**Dodge Brothers' Commercial Car**

The ideal light delivery car for all merchants needing a dependable, economical, quick-delivery car. Its handsome appearance has a distinct advertising value to the progressive merchant.

Two models Panel and Screen Side.

Call or Telephone and we will be glad to demonstrate these cars

**Scales Motors Company**

510 Davis St., Evanston

Phone Evanston 6636

Nash

Stearns

Dodge Brothers

**DO YOU KNOW WHEN?**

To Prune, Spray, Plant and Transplant your trees? This is an expert's work. Be sure you are getting expert service. Your trees are valuable. Do not have them ruined by so-called Tree Trimmers. Information is gratis.

INVESTIGATE

**THOMAS J. LYNCH** VILLAGE FORESTER, by Appointment, TO WINNETKA AND KENILWORTH  
TWO PROUTY ANNEX, WINNETKA PHONE WINNETKA 1294

**NORTH SHORE RUBBER CO.**

NOT INCORPORATED

Auto Tires and Tubes Repaired

PHONE EVANSTON 2037

1620 MAPLE AVE.

EVANSTON, ILL.

J. O. HAYES, Proprietor