

# MONTHLY BALANCE SHEET OF THE VILLAGE OF WINNETKA

AT THE CLOSE OF BUSINESS JULY 31st, 1919

ASSETS.		
	Current Year*	Last Year
<b>Cash—</b>		
General	\$ 186.75	\$ 6,533.26
Electric	22,338.76	39,501.58
Water	7,345.57	4,322.85
Electric Depreciation	408.02	2,348.10
Special Assessment	\$3,964.16	53,030.83
Petty Cash Fund	1,200.00	1,200.00
Water Depreciation	9,880.84	5,000.00
<b>Total Cash</b>	<b>\$124,134.56</b>	<b>\$111,986.72</b>
<b>Accounts Receivable—</b>		
Taxes	\$ 7,704.10	\$ 10,542.44
Special Assessment Rolls	555,099.01	416,804.97
Tax Certificates	5,704.97	6,537.71
County Collector	52,612.80	
Due from Electricity Consumers	5,813.85	4,960.16
Due from Water Consumers	294.75	420.38
Due from Sundry Persons	3,312.29	3,691.54
<b>Total Accounts Receivable</b>	<b>\$630,541.77</b>	<b>\$442,957.20</b>
Inventory of Coal at Plant	\$ 2,639.75	\$ 6,635.88
Bond Investment—Electric Fund	25,000.00	
Bond Investment—Elec. Depr'n Fund	58,864.00	50,448.01
<b>Total Current Assets</b>	<b>\$842,210.08</b>	<b>\$612,027.81</b>
<b>LIABILITIES.</b>		
Special Assessment Time Warrants	\$ 11,331.34	\$ 12,423.51
Special Assessment Bonds	515,400.00	464,000.00
Special Deposits	3,091.28	1,546.28
<b>Current Surplus or Deficit—</b>		
General Fund	7,738.36	19,221.06
Electric Fund	58,022.36	52,297.62
Water Fund	7,640.32	4,743.23
Electric Depreciation Fund	58,455.98	52,796.11
Water Depreciation Fund	9,880.84	5,000.00
Special Asst. Fund	170,649.60	
<b>Total Current Surplus</b>	<b>\$312,387.46</b>	<b>\$134,058.02</b>
<b>Total Current Liabilities</b>	<b>\$842,210.08</b>	<b>\$612,027.81</b>
<b>GENERAL FUND—MONTHLY OPERATION</b>		
Bal. in Fund at Beginning of Month	\$ 4,051.86	\$ 15,007.54
ADD Income for Month	14,390.46	13,080.77
(Includes \$10,000 rec'd in Gen. Taxes)		
<b>Total</b>	<b>\$ 18,442.32</b>	<b>\$ 28,088.31</b>
<b>DEDUCT EXPENDITURES—</b>		
Public Affairs	3,283.22	927.23
General Office Expense	335.09	231.57
Health Department	1,209.20	1,159.39
Public Works	3,833.61	5,288.04
Police Department	1,276.24	1,004.12
Fire Department	766.60	256.90
<b>Total Expenditures</b>	<b>\$ 10,703.96</b>	<b>\$ 8,867.25</b>
<b>Balance in Fund at Close of Month</b>	<b>\$ 7,738.36</b>	<b>\$ 19,221.06</b>
<b>ELECTRIC FUND—MONTHLY OPERATION</b>		
Bal. in Fund at Beginning of Month	\$ 57,478.66	\$ 51,347.99
ADD Income for Month	6,543.27	5,780.87
<b>Total</b>	<b>\$ 64,021.93</b>	<b>\$ 57,128.86</b>
<b>DEDUCT EXPENDITURES—</b>		
Steam Generation	\$ 3,144.30	\$ 2,455.69
Electricity Generation	555.57	409.18
Distribution	441.22	523.83
Consumption	88.85	61.11
Commercial	71.79	54.09
General Expenses	406.15	505.02
<b>Total Operating</b>	<b>\$ 4,717.88</b>	<b>4,008.92</b>
Merchandise Purchased	101.58	
Construction and Betterments	1,180.11	822.32
Transfers to Other Funds		
<b>Total Expenditures</b>	<b>\$ 5,999.57</b>	<b>\$ 4,831.24</b>
<b>Balance in Fund at Close of Month</b>	<b>\$ 58,022.36</b>	<b>\$ 52,297.62</b>
<b>ELECTRIC PRODUCTION AND COST</b>		
K. W. H. Furnished Consumers for Lighting	32,859	33,422
K. W. H. Furnished Consumers for power	7,871	5,144
K. W. H. Furnished Water Department for power	58,012	15,239
K. W. H. Furnished Village for Street Lights	59,628	5,775
K. W. H. Used at Station	5,763	1,678
<b>Total Consumption</b>	<b>106,069</b>	<b>61,258</b>
K. W. H. Lost in Distribution	19,493	13,339
<b>Total Generation</b>	<b>125,562</b>	<b>74,597</b>
<b>Operating Expenditures per K. W. H.</b>		
generated	.0375	.0423
Depreciation per K. W. H. generated	.0049	.0081
Loss in Distribution per K. W. H. generated	.0079	.0109
<b>Total Cost per K. W. H. sold</b>	<b>.0503</b>	<b>.0613</b>
<b>WATER FUND—MONTHLY OPERATION</b>		
Bal. in Fund at Beginning of Month	\$ 13,097.78	\$ 7,060.95
ADD Income for Month	190.79	92.91
<b>Total</b>	<b>\$ 13,288.57</b>	<b>\$ 7,153.86</b>
<b>DEDUCT EXPENDITURES—</b>		
Pumping Expense	\$ 13,288.57	\$ 7,153.86
Distribution	4,088.69	1,708.53
Commercial	715.80	373.31
General Expenses	3.14	7.79
<b>Total Operating</b>	<b>310.62</b>	<b>279.57</b>
<b>Total Expenditures</b>	<b>\$ 5,122.90</b>	<b>\$ 2,364.55</b>
Transferred to Sinking Fund		
Interest on Time Warrants		
<b>Total Operating and Fixed Charges</b>	<b>\$ 5,122.90</b>	<b>\$ 2,364.55</b>
Construction and Betterments	125.35	46.08
Transfer to Other Funds	400.00	
<b>Total Expenditures</b>	<b>\$ 5,648.25</b>	<b>\$ 2,410.63</b>
<b>Balance in Fund at Close of Month</b>	<b>\$ 7,640.32</b>	<b>\$ 4,743.23</b>
<b>WATER PUMPED AND COST</b>		
Winnetka Consumption (in 1000 gal.)	25,906	14,117
Glencoe Consumption (in 1000 gal.)		
Gross Point Consumption (in 1000 gal.)		
Fire Serv. Consumption (in 1000 gal.)		
<b>Total Consumption</b>	<b>25,906</b>	<b>14,117</b>
Loss in Distribution		
<b>Total Water Pumped</b>	<b>68,833</b>	<b>41,375</b>
<b>Operating Expenditures (per 1000 gals. pumped)</b>		
	.0744	.0571
Depreciation (per 1000 gals.) pumped	.0031	.0048
Loss in Distribution (per 1000 gals.) pumped		
<b>Total Cost (per 1000 gals.) sold</b>	<b>.0775</b>	<b>.0620</b>
<b>FUEL CONSUMED</b>		
1918—464 tons of coal at \$5.32 per ton	\$ 2,468.48	
1919—453 tons of coal at \$4.46 per ton		\$ 2,020.38
*These figures are "in the red."		

the Benevolent and Protective Order of Elks, which was among the first organizations to offer aid in the campaign. In other parts of the state local associations of commerce, members of the Lions' club, Kiwanis and Rotary clubs also have promised to aid in the work.

The American Legion, which is composed of returned soldiers also has offered to aid in any way the Army may request, and a meeting will be held in Chicago next Saturday at which plans will be made to carry on the campaign.

### TAM O'SHANTER TOURNEY HONORS TAKEN BY RAEDL

Dr. Raedel won the Tam O'Shanter tourney at Westmoreland with a score of 157. The doctor qualified with 78 and made 81 and 76 in the final flights. He also won the choice score, but was not allowed to take two prizes. An error in the announcement in Chicago papers gave credit for winning the tourney to E. H. Bankard, who was a member of the winning foursome.

### Paper from Cotton Hulls

As a result of experiments conducted by the Forest Products Laboratory, United States Department of Agriculture, a good grade of paper is being produced in commercial quantities from cotton-hull fiber.

### IT PAYS TO ADVERTISE

## HOYBURN

615 Davis St., Evanston

Matinees 2 and 6 Evenings 7 & 11

Friday September 5

**OLIVE THOMAS**  
in "The Spite Bride"

Saturday September 6

**LILA LEE** in  
"The Heart of Youth"

NEXT WEEK

Mon. and Tues., Sept. 8 and 9

**BLANCH SWEET**  
in "The Hushed Hour"

Wednesday September 10

**Lila Lee** in  
"Cock O' The Walk"

Thurs. and Fri., Sept. 11 and 12

**Eugene O'Brien** in  
"The Perfect Lover"

## Willard

SERVICE STATION

**Service First  
Advice Second  
Sales Third**

There's our policy in a nutshell.

First—When the customer comes in, find out what HE wants. Give him satisfaction at the lowest charge consistent with a GOOD THOROUGH JOB.

Second—Tell him how to prevent battery trouble. We're not anxious to repair his battery, except to make it last longer.

Third—When he really needs a new battery we want him to buy it from us, naturally, and to buy a Willard with Threaded Rubber Insulation—because that battery will last longer and give him less occasion for expense on repairs than any other battery he can buy.

Come in and find out the wonderful service records of Willard Batteries with Threaded Rubber Insulation.

**Evanston Battery Station**  
1648-1650 Maple Ave., Cor Church St.  
Phone Evanston 4445

**BATTERIES**

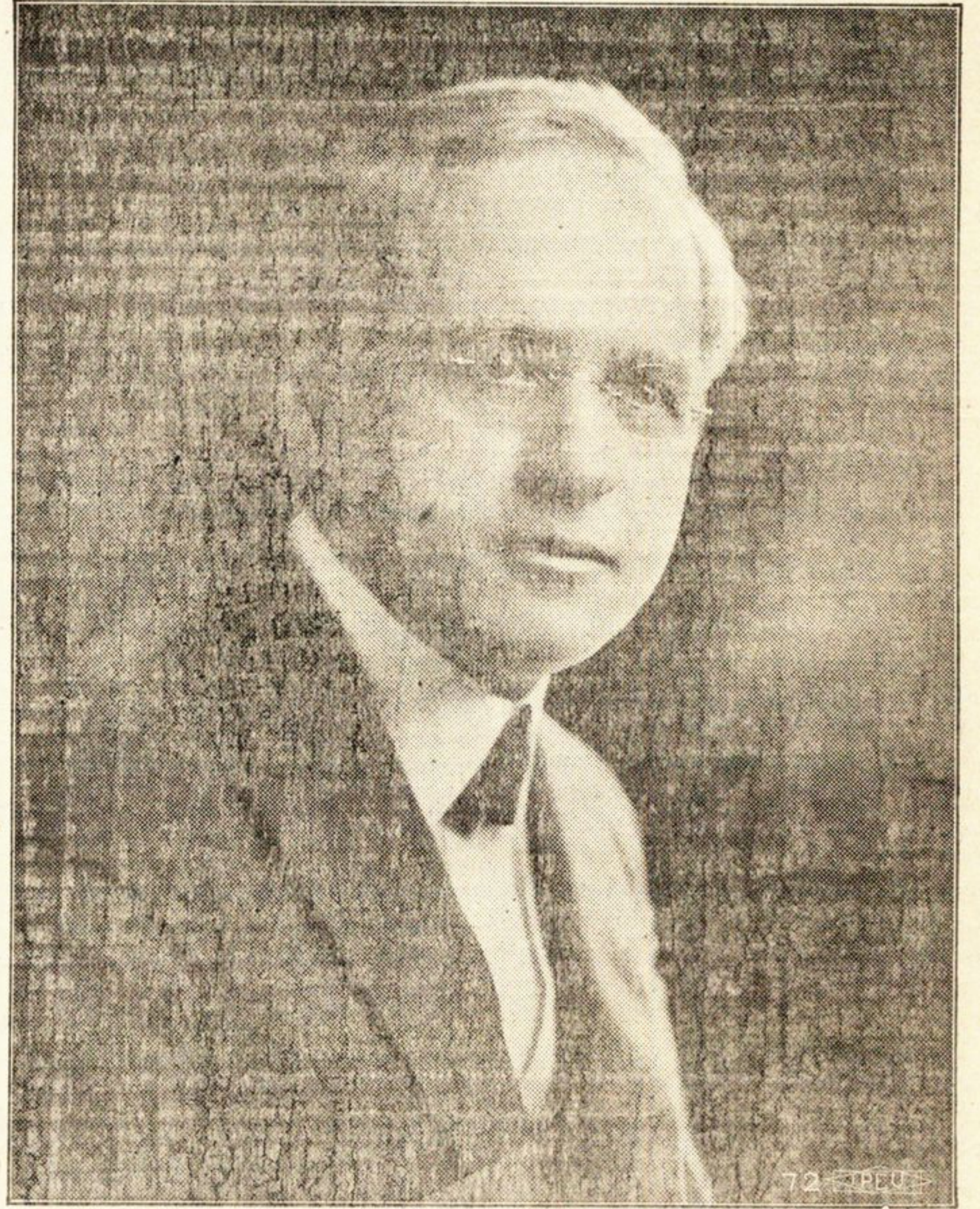
**RECHARGED  
REPAIRED  
RENTED  
RENEWED**

# WILLIAM H. MALONE

Republican Candidate for Delegate

## Constitutional Convention

Seventh Senatorial District comprises all the Country Towns in Cook Country outside City of Chicago



HE FOUGHT FOR YOU against the Corporate Interests at Springfield. HE WILL FIGHT FOR TAX REFORMS in the Constitutional Convention.

ELECTED BY THE PEOPLE, he served the People—not the Tax-dodging Corporations.

Vote for Him Wednesday, Sept. 10  
Last Name on Ballot

## Lexington

MINUTE MAN SIX

BEAUTIFULLY PROPORTIONED, modernly American in design, full-powered, and with sweeping grace of line, the latest Lexington Minute Man Six stands a splendid descendant of a distinguished line of motor carriages—a car true to the best traditions for the most discriminating buyer. The Lexington is not only abreast but in advance of modern ideals in motored vehicles, accomplishing this, however, without transgressing, in the slightest, the rules of good taste, and in careful conformance with practical motor car engineering.

**Prices**

**Five Passenger - \$1,785**  
**Tourabout Spor-tour 1,785**  
**Combination Sedan 2,085**

(F. O. B. FACTORY)

**C. M. McDONALD**  
DISTRIBUTOR

519 Davis St., Evanston Tel. Ev. 307

NORTH SHORE HOTEL BUILDING

**AMERICAN LEGION BOOSTS DRIVE OF SALVATION ARMY**

At the organization of the Salvation Army Home Service Fund drive for \$2,250,000 in Illinois progresses, state and civic organizations are falling in line to back the movement and aid in the solicitation of funds which starts September 22 and continues for one week.

Reports have been received at the campaign headquarters in Chicago showing that in all parts of the state the appeal for workers has met with a ready response, and virtually all counties have either completed their organizations and pledged themselves to raise a stated amount, or the work is well under way.

Arrangements have been made for Salvation Army Campaign organizers to address meetings of lodges of