

SAYS RESIDENTS RECOGNIZE WORTH OF STEPHENS CAR

Franklin L. Beck, manager of the General Motors of Illinois, located at 1019 Davis street, Evanston, states that the motor-wise buyers of the north shore have been very quick to recognize on its merits the Stephens Salient Six.

Quality in performance and beauty in appearance are its outstanding features, according to Beck. He calls attention to the ability and the prestige of its builders, the Moline Plow company, which has enjoyed an honorable reputation through fifty-four years of manufacturing experience, and has a paid-up capital of \$19,000,000. This unusual backing and reputation will never be chanced on an inferior product, he asserts.

The Stephens Salient Six perfected overhead-valve engine is the result of a combination of ideas—those of the Stephens engineering department in collaboration with the ideas of expert consulting engineers. The best features of the best automobile

engines have been adopted with such added improvements in design and construction as are necessary to produce an engine with a scientifically correct gas handling system.

The superiority of overhead valves is unquestioned when high power in ratio to engine size is necessary. The Salient Six engine embodies this perfect design, yet more perfected by Stephens engineers, with a superior

gas handling system that burns all the gasoline. The result is an engine of wonderful power, speed, idling ability, acceleration and economy.

Piece by piece the Stephens Salient Six engine represents the most advanced achievements in gasoline engine design. The result is noticeable in the location of the intake and ex-

haust manifolds. The intake is within the cylinder head and surrounded by heat, while the exhaust is designed so that the burned gases from the two center cylinders create a "hot spot" opposite the intake manifold. This is responsible for the engine's ability to handle extremely low-grade fuel.

IT PAYS TO ADVERTISE



The One Thing You Have to Do

Perhaps you have bought a new car with a Willard Storage Battery on it.

Perhaps you have bought a Willard Battery to replace the battery on an old car.

No matter which—you're entitled to Willard 90-Day Battery Insurance.

But to get this protection your battery must be registered.

Of course we register a battery when we sell it, but if it is on a new car, be sure to drive in right away and have us put the registry number on it. At the same time we'll gladly tell you the few simple rules that you must follow to give your battery the right start in life. Ask us for a copy of the booklet, "Willard Service and You."

Evanston Battery Station

1648-1650 Maple Ave., Cor Church St.
Phone Evanston 4445

BATTERIES

RECHARGED
REPAIRED
RENTED
RENEWED

Bell System



A great many calls for "Information" are for numbers correctly listed in the Telephone Directory.

Delay in completing these calls will be avoided if telephone users will consult the Telephone Directory carefully for the name and number of the person they wish to reach.

When calling "Information" try to give her correct spelling of names, initials and addresses of persons wanted.

CHICAGO TELEPHONE COMPANY

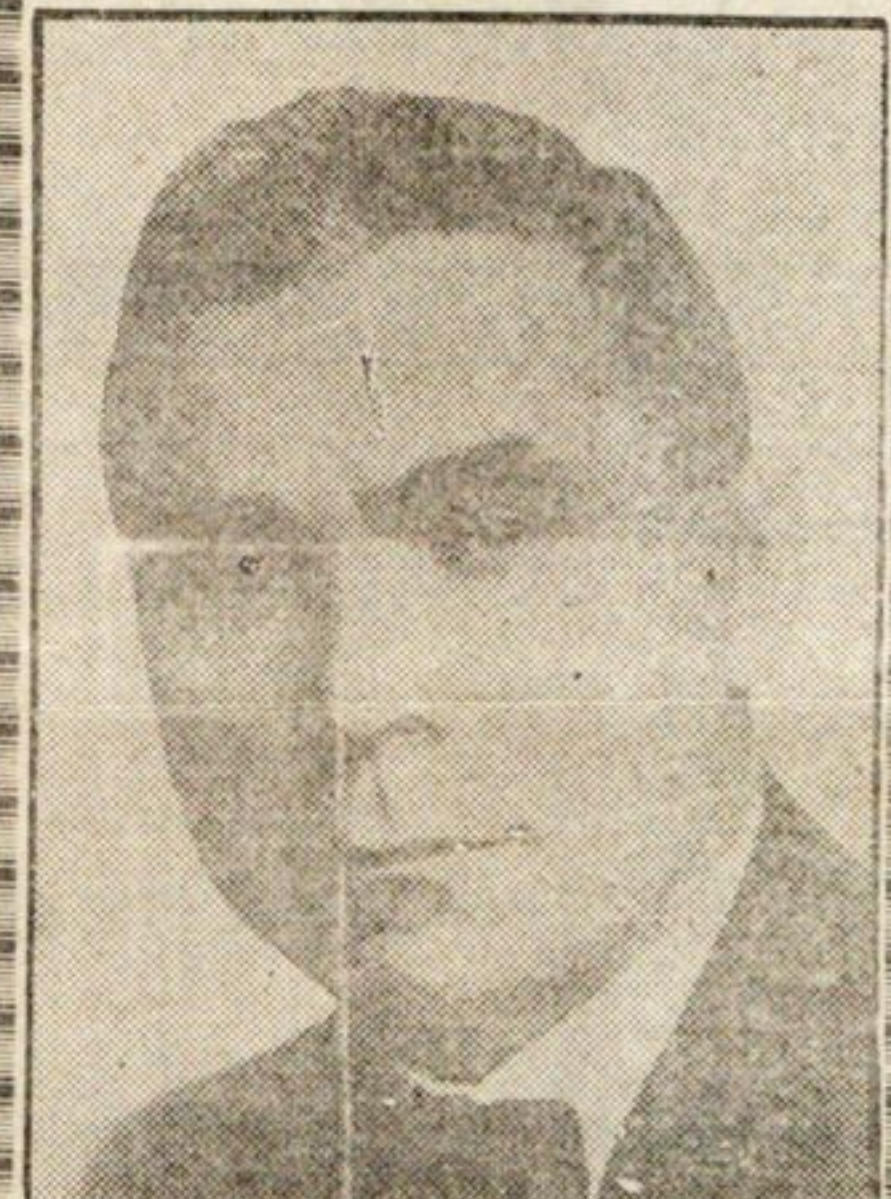
E. B. Taylor & Co.

Phones 998-999

HARDWARE AND PAINTS

The Best is Always the Cheapest. That's Why We Carry the Best

HARRY MITCHELL



SPECIAL SALE

\$80, \$90, \$100 and \$125

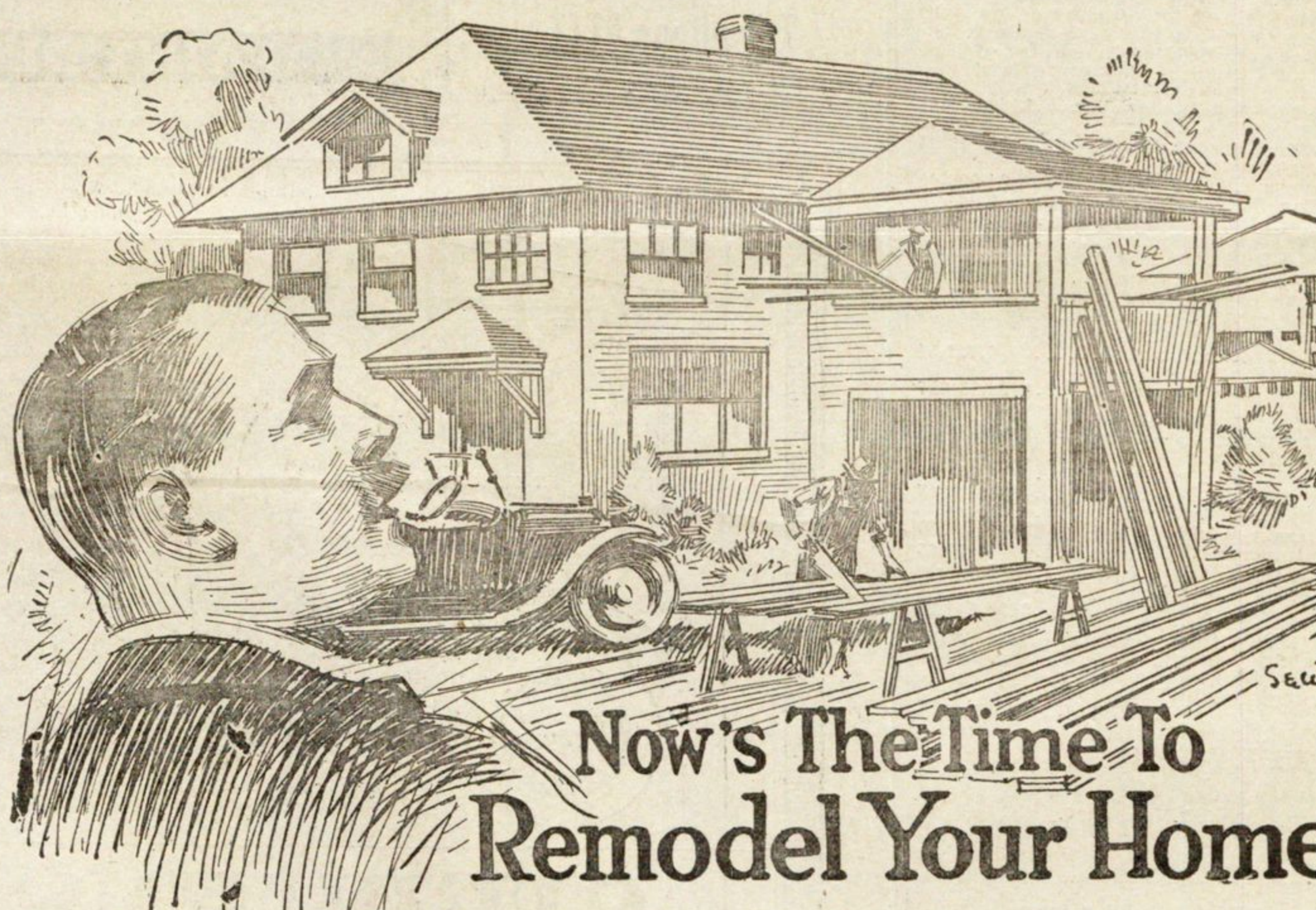
Suits Made to Order Only

\$50

Extra PANTS Free With Every Suit

You can save from \$30 to \$75 by coming to Chicago to see my goods and at the same time get the Best Suit you ever had on your back.

HARRY MITCHELL
16-18 East Jackson Boulevard
Between State and Wabash, Chicago



Now's The Time To Remodel Your Home

YOU'VE wanted a sleeping porch with a garage beneath it, or a larger front porch—and you've put it off until "after the war."

The war's over now—and there was never a more opportune time to make your home what you want it. Right now there are materials to be had, men to do the work—and prices have stabilized so that you can make changes as cheaply as at any time in the future that can be foreseen.

As a matter of fact, building costs haven't increased in ratio to wages and salaries—your pay envelope will build more now than it would before the war.

Before you start your remodeling, consult your Local Lumber Dealer—get his advice on the wood you should use. He can give you suggestions that will add materially to the value and satisfaction you get from your building, because he knows the utility of all woods.

Take him into your confidence—he's as eager to please as you are to be pleased. He'll give you a cordial reception.

The Retail Lumber Yards of Chicago and Cook County

Build Now — Use
LUMBER
SUPPLIED BY YOUR LOCAL LUMBER DEALER

SCHULZE'S Butter-Nut BREAD

WHEN A
BETTER BREAD
CAN BE MADE
WE WILL MAKE IT

BRIDGES & GAGGE ECONOMY CARS FRANKLIN & HUPP

1629

Orrington
Avenue

Phone
Evanston
5886