

"LITTLE MARY" IS BACK AT VILLAGE THEATER THIS WEEK

"Little" Mary Pickford will be back at the Village theater on Friday and Saturday of this week after many months' absence from filmdom. This time the idol of the motion picture public appears in the real springtime comedy drama, "Captain Kidd, Jr."

Can the increasing army of lip-readers tell what a parrot is talking about? This is a problem which gave considerable worry to Mary Pickford and her company during the filming of "Captain Kidd, Jr." which will be shown at the Village theater next Friday and Saturday.

Of course, every story which suggests pirates and buried treasures must have a parrot and this was no exception, but in casting about for a bird gifted with speech, it was found impossible to obtain one which could be taught the necessary speeches, except a Panamanian parrot, which was rather too well gifted colloquially.

That is, when he was asked to say "Pretty Polly," he was more likely to let go a string of profanity that would shock an army mule skinner. By the time the picture was completed Miss Pickford and her corps of fellow-workers had been unable to get an answer to their query, so that the showing of the film play must determine the question.

Another feature of the Village theater program this week will be the display of Victory Loan films shown in connection with the drive in Wilmette. These films will be shown at every performance during the week.

On Monday and Tuesday John Barrymore will be the attraction in "The Test of Honor," considered one of the really remarkable dramatic productions of the year.

E. Phillips Oppenheim wrote the novel "The Malefactor," from which this picture was made, and John Barrymore enacts the leading role of the man who has spent many years of his life in a penitentiary. Not to tell you even the smallest bit of the story, which would be a crying shame, we just want to call your attention to the marvelous make-up of the star in his character as the convict.

There will be Pathe News on Monday and a Christie Comedy on Tuesday.

The feature film on Wednesday and Thursday will be "The Lion and the Mouse," starring Alice Joyce, who is considered by many theatergoers as the leading emotional actress of the screen.

It hardly seems necessary to introduce a picture, which, as a stage play, was one of the dramatic sensations of the past decade. Charles Klein, who met such an untimely death in the sinking of the Lusitania, wrote the original play from which the picture is made. Alice Joyce is the clever little mouse who brings to her knees the financial lion of the world and saves her father from disgrace and her sweetheart to herself.

Added attractions will be a screaming Lloyd comedy and a travel film.

WAY DOWN EAST COMES TO VICTORIA

"Way Down East" William A. Brady's big scenic production will be seen at the Victoria theater, for one week commencing Sunday afternoon, April 27.

"Way Down East" is one of the most successful rural dramas ever produced and its annual arrival is looked forward to as one of the events of the theatrical season. All the comedy and dramatic elements of this well liked play never grow old, the company is unusually capable, the stage pictures are at all times pretty to look upon, the countryside in summer time being in strong contrast to the indoor joys of winter, when guests are entertained before a blazing fire with a snowstorm raging without.

FIVE BIG STARS AT THE HOYBURN FOR NEXT WEEK

Elsie Ferguson will be the stellar attraction at the Hoyburn theater, Evanston, on Monday and Tuesday of next week. The vehicle will be, "Eyes of the Soul."

Mary Miles Minter will headline on Wednesday, appearing in "The Intrusion of Isabel." Other attractions will be the final episode of Houdini's "The Master Mystery" and the opening episode of "The Carter Case," a Craig Kennedy Serial.

Dorothy Dalton will be the attraction on Thursday with, "The Home Breaker."

YOUNG WOMEN

Have you ever investigated what we have to offer you?

Our work is easy to learn. We teach you how to handle calls before you are sent to an office.

We give you a liberal starting salary and advance you frequently thereafter.

Cozy, attractive rest rooms are provided for your enjoyment.

Visit our office and see what a position with us means to you.

Young women, 16 years of age or over, wanted for this work. Apply to Chief Operator at Wilmette, Winnetka or Glencoe.

CHICAGO TELEPHONE CO.

Friday's program brings Dorothy Gish in, "Peppy Polly" while Enid Bennett will be the magnet to the film fans on Saturday in, "The Law of Men."

SEEK 15,000 MEN FOR AIR SERVICE OF ARMY

Notice has been received by the local postal authorities of an enlistment campaign to secure 15,000 men for the air service of the United States army.

According to the enlistment notices the government will provide clothing, food, medical attention and quarters. Privates pay is to be \$30 per month; Private, first class, \$33; Corporal, \$36; Sergeant, \$44; Serg., first class, \$51; Sergeant, first class, aviation mechanic, \$73.50; Master Signal Electrician, \$81; Master Signal Electrician, Aviation mechanic-

ian, \$121.50. A furlough within 30 days from the time of re-enlistment is promised. Applicants are request-

ed to call or write: "Department Air Service Officer, 230 East Ohio street, Chicago, Ill." for particulars.



Sometimes a telephone subscriber will call a number and if he does not get an almost instantaneous response, will hang up the receiver and try again. Had he waited a few seconds longer, the call might have been answered.

Hanging up the receiver prematurely means that your time and the time and work of the operator have been wasted. If the called party answers after you have abandoned the call, the operator must come on the line and explain, "A party called you but they have hung up. Excuse it, please."

Please allow the person you are calling a reasonable time in which to answer before abandoning your call.

CHICAGO TELEPHONE COMPANY

THE FRIEND OF THE HOUSEHOLD
THE ONLY BUTTER-NUT BREAD
 IS MADE BY **SCHULZE BAKING CO.**



The Great White Way

There is a veritable Gay White Way at the very door of Chicago that compares in life and sparkle with the world-famed thoroughfares of New York. Certainly there is nothing to equal it in any other city in the middle west. It is in the Heart of Milwaukee.

On Saturday and Sunday evenings in Milwaukee there is life—abundance of it. Brilliantly lighted thoroughfares and pleasure seeking crowds—theatres, cafes, restaurants, modern stores and attractive display windows.

See Milwaukee. Go via the North Shore line. Its cheaper and more convenient. Only 1 hour and 56 minutes from Winnetka. Modernly equipped, steel trains maintain an hourly service over the North Shore line daily, direct to Milwaukee. On Saturday afternoons, Sundays and Holidays there is a train every 30 minutes.

EXPRESS SERVICE

Express trains, making one stop in each town between Evanston and Waukegan run every 30 minutes. This convenient service makes the North Shore line the choice of persons who travel to points along the north shore.

For Further Information apply to

NORTH SHORE LINE

CHICAGO OFFICE
 66 WEST ADAMS STREET,
 PHONE CENTRAL 8280

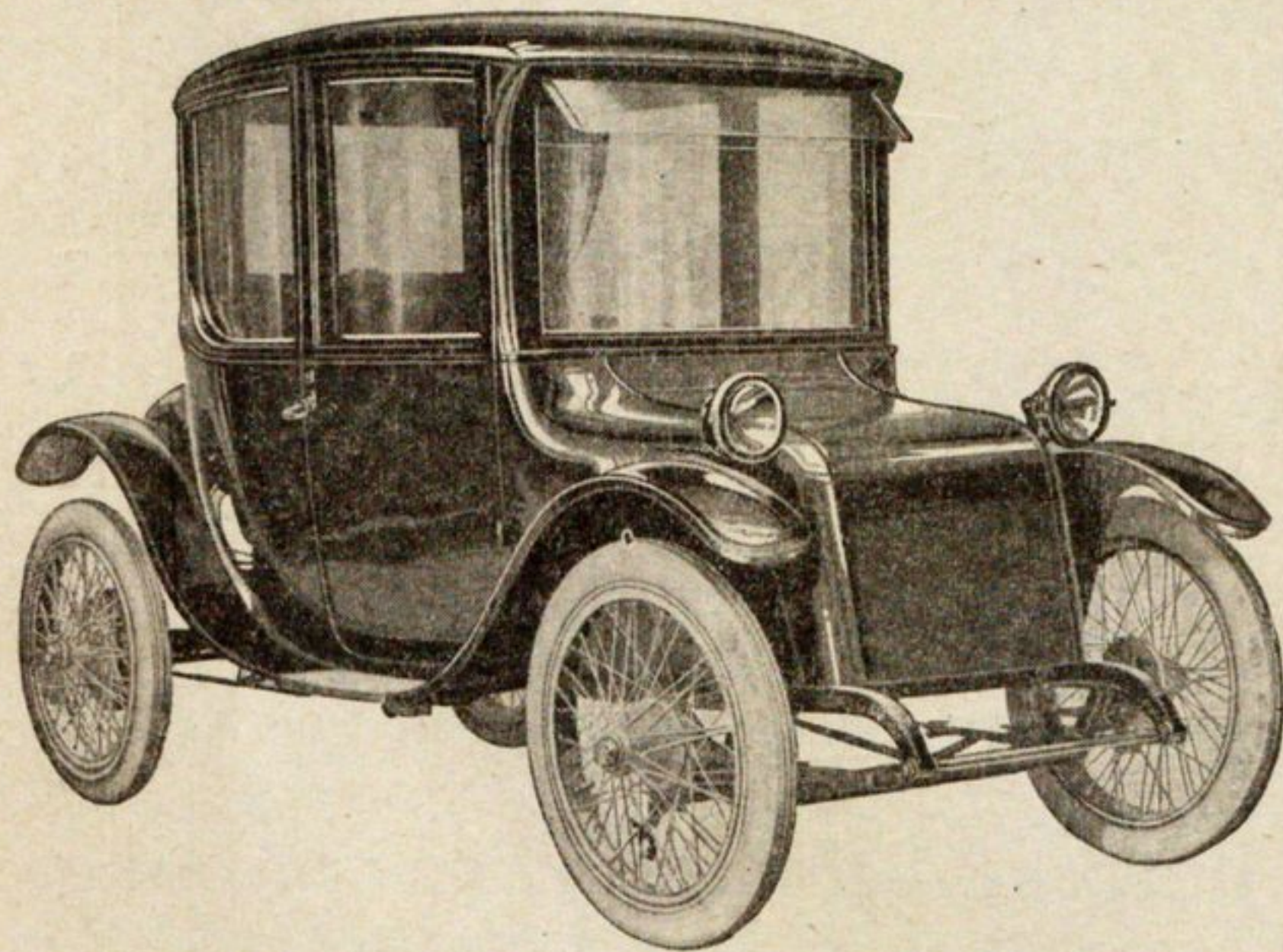
MILWAUKEE OFFICE
 187 SECOND STREET
 PHONE GRAND 1136

WINNETKA TIRE SHOP 723 Oak Street, Winnetka

TELEPHONE WINNETKA 1565

Vulcanizing - Repairing

Hood, Mason and Firestone Tires Monarch Perfection Red Tubes MILLERAD-ON-A-TREAD PUT ON YOUR OLD CASINGS



THE new Milburn Light Electric, now being displayed, promises to eclipse the success of all former Models.

T has larger tires and batteries. Greater convenience and comfort are secured by our exclusive seating arrangement.

Established 1848 The Milburn Wagon Company Toledo, Ohio

GEORGE H. MORRIS, Sales Rep.

Office, 5218 BROADWAY, CHICAGO Telephone Edgewater 1332
 Residence, 857 GREENWOOD AVE, GLENCOE. Tel. Glencoe 203

Demonstration Without Cost or Obligation

WITH plenty of speed for all ordinary needs, amply powered for a full day's driving demands the modern electric, the Milburn, is the natural choice wherever its advantages are understood. SEE these newer, finer Milburns before you buy.