

RECORD SALE OF CARS BY BRIDGES & GAGE

Here is a list of eleven cars sold as reported last week by the firm of Bridges & Gage. Six of them are Franklins.

Walter Dukes, care Evanston Hotel, Franklin Coupe.

Nazareth Barsumian, 618 Greenwood boulevard, Evanston, Franklin Touring.

R. G. Saxer, 1117 Wilmette avenue, Wilmette, Franklin Touring.

W. H. Johnson, 1546 Pratt boulevard, Chicago, Franklin Touring.

Mrs. M. B. Boyden, 725 Pine street, Winnetka, Franklin Sedan.

F. M. Chaffee, 245 Cumnor road, Kenilworth, Franklin Club Roadster.

Frank G. Calkins, 1913 Wesley avenue, Evanston, Studebaker Touring.

O. J. Smith, 735 Monroe street, Evanston, Dodge Sedan.

Albert Steffens, 1121 Washington street, Evanston, Stutz 4-passenger Sport Model.

H. Burmister, 452 Oakdale, Glen-coe, Locomotive Touring.

H. Burmister, 452 Oakdale, Glen-coe, Locomotive Touring.

Concerning the performance of the Franklin car Bridges & Gage gave out the following interesting information.

"In the Long Island Economy Test, under the official supervision of the Long Island Automobile club—the Franklin won over all contestants at an operating cost of only 1.2 cents per mile. The cost of all other cars averaged 6 cents per mile—five times the Franklin operating cost.

In the One Gallon Efficiency Test, under the official supervision of the New York Automobile Trade association, the 21 cars entered in competition the Franklin car not only won the prize for the best score in its price class, but also the Willys' trophy for the best score irrespective of price class.

Efficiency Test by Worcester Polytechnic Institute demonstrated that the Franklin delivers 84.4 per cent of its engine power at the rear wheels.

"Used Franklin cars are scarce and are known as the easiest selling proposition among all the used cars.

"If you can find a used Franklin for sale, you will pay twenty per cent more for it than for any other fine car in proportion to its first cost and the use it has had.

ESSEX CAR NOTABLE BECAUSE OF COMFORT, DECLARES SHERLAND

"The Essex, which has just made its bow to the public, was built to meet the demand for a light weight, moderate priced, high quality automobile of unusual performance, luxury and stability," says Louis J. Sherland

north shore distributor.

"In the past automobiles have been developed along two widely different lines. One has been toward a cheap, light car. Economy and low first cost have been its chief advantages. The other trend has been toward luxury, comfort and endurance at the expense of high first cost and heavy maintenance expense. The Essex combines the advantage of these two types.

"The car was designed by some of the best engineers in America and is built at the Hudson plant in Detroit. It is moderately priced, economical in operation, has no useless weight, and above all, it is comfortable. In performance, luxury and finish it is comparable to the highest priced cars on the market.

"While the endurance and power of the car are unusual, one of its most notable features is its comfort. Although built for five passengers, careful designing has made it possible to provide more room in the front and tonneau than is found in most seven-passenger cars. The seats are deep and comfortable. The doors open wide and the levers and pedals are within easy reach. The springs are long enough to assure comfortable riding even on the roughest road.

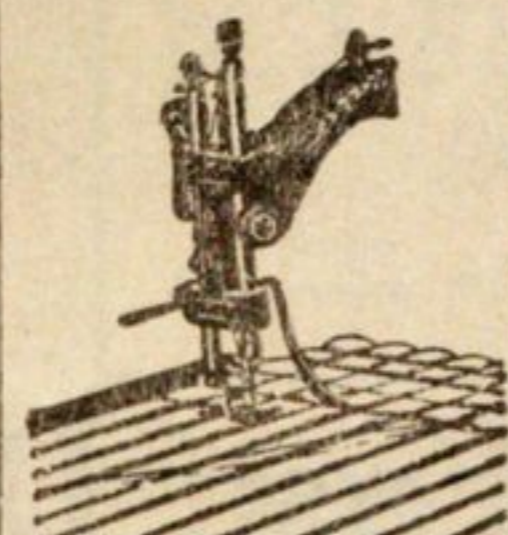
Good Stain Remover

Take an ounce of sal-ammoniac and salt of tartar, mix and pour over them a pint of soft water. Dip into it those parts of a white article

stained with wine, fruit, or mildew. After the stains have thus been removed, wash in the usual manner.

SUBSCRIBE NOW.

SEWING MACHINES



ALL MAKES

Notice---We have no door to door agents. Our price is far lower.

Over 2,000,000 Singers Sold Each Year

Singer Electric, \$39.00
Used Machines - 5.00

Machines Rented, \$3.00 per month

Repairing on Wilcox & Gibbs and all makes of machines

Patterson Bros
EVANSTON CHICAGO
1522 Sherman Ave. 1950 Irving Park Blvd.
EVANSTON

Phone Evanston 654. Phone Wilmette 526

Open Tuesday, Thurs. and Sat. Evenings

Silverware Opportunities

Owing to war activities in the past year, silverware manufacturers have directed sixty per cent of their output to war work, the balance being used to supply the trade with necessities. Naturally many patterns we are displaying have been discontinued and many more are difficult to obtain.

With this in mind we have decided to dispose of the entire assortment of these particular items at sharply reduced prices. Taking into consideration the steady increase in the value of silver, this is a splendid opportunity to purchase silverware at a minimum.

A Partial List of the Many Pieces Is Shown Here—

Bowls, Baskets, Dishes, Trays, Toilet Articles, Marmalade Jars, Salt and Pepper Sets, Smoking Accessories, Liquor Bottles, Bon Bon Dishes, Bottle Openers, Traveling Cups, Vases, Candle Sticks, Picture Frames, Pitches, Tea Pots, Coffee Pots, Cups, Novelties, Urns, Cream and Sugar Sets, Leather Goods.

CHARLES E. GRAVES & CO.

Jewelers and Silversmiths

MADISON AND WABASH
CHICAGO

WINNETKA TIRE SHOP 723 Oak Street, Winnetka
TELEPHONE WINNETKA 1565

Vulcanizing - Repairing

Hood, Mason and Firestone Tires Monarch Perfection Red Tubes
MILLERAD-ON-A-TREAD PUT ON YOUR OLD CASINGS

F. ARENDT

LADIES' TAILOR IMPORTER

HABIT MAKER

402-3-4 HEYWORTH BLDG., CHICAGO

29 E. MADISON STREET

Now showing the newest and latest creations for

SPRING & SUMMER

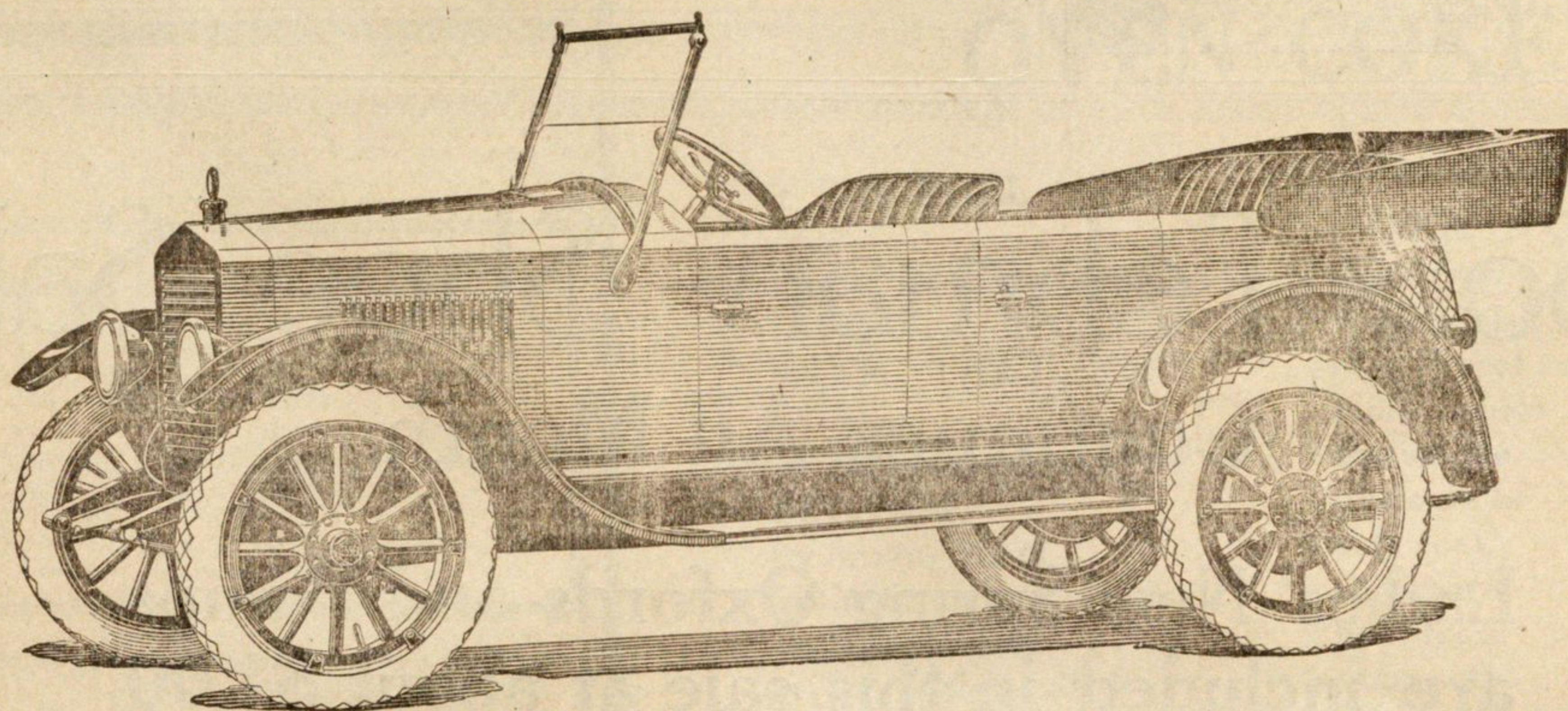
You are cordially invited to inspect our materials and prices before placing your order elsewhere

Bell  System

Do not move the telephone receiver hook up and down violently when trying to get the attention or to recall the operator. When the movement is jerky and hurried the signal light before the operator does not respond and she does not get the signal.

To recall the operator move the hook slowly and gently up and down.

CHICAGO TELEPHONE COMPANY



Hudson Super-Six Gained Its Leadership on the Speedway IT MAINTAINS IT WITH 60,000 USERS

THE IN-BETWEEN CAR

☐ The ESSEX, as everyone recognizes, combines many of the wanted qualities of both the cheap light car and also the large costly car.

☐ It is light, yet as comfortable and easy riding as the large heavy car. It is small, but it is also capable of performance in the way of acceleration, hill climbing and speed that few larger and costlier cars are capable of showing.

☐ The ESSEX is moderately priced, but it is rich in detail of beauty and finish. It awakens the pride of the ownership.

IT LED THEN AND LEADS NOW

☐ The records Hudsons made in the tests that prove endurance are just as important today as they were when made two and three years ago. That was the only way then in which it could be proved a life car. The abuse which only the speedway and the hardest touring and hill climbing would reveal in a few hours had to be used to demonstrate Hudson limits of endurance.

☐ Now 60,000 users through every kind of service and neglect are individually confirming what was shown in those tests. They have established the leadership of HUDSON SUPER-SIX in every way that performance and long life can prove.

WE ARE NEAR ENOUGH TO GIVE YOU SERVICE

LOUIS J. SHERLAND COMPANY, 1019 Davis St., Evanston