

# Exhaust Echoes

## PROLONG LIFE OF AIR-BAGS

**When Placed in Mold, Clamp Screw Should be Tightened Until Exact Size Obtained—Keep Wet.**

The life of an air-bag can be greatly lengthened by observing the following rules:

When the tire is placed in the mold, the clamp screw should be tightened until the exact size of the tire is obtained, and then given about one-half turn. This slightly decreases the size of the cavity and relieves the strain on the air-bag, in addition to giving perfect results in the cure. Never allow the bag to become flat, as this will cause cracks in the lining.

Inject a little water into the bag each week in order to keep the inside of the bag moist.

## FASHIONABLE AUTO DRESS.

Breeches have come into fashion for automobile touring and are apparently receiving a warm reception. Of course, the breeches are covered by a long, full coat, much the same as the riding habit, or full raglan coat. In many cases leggings are adopted or puttees are worn. Attractive waistcoats in bright colors are worn with these suits and the caps are made of the same material, leather trimmed, or are in the plain leather models.

**Don't Stop Here, Turn Over.**

## SUBSTITUTE FOR GASOLINE.

It should be remembered that in the event of running short of gasoline in a locality where the supply cannot be replenished, "stove naphtha" and even kerosene oil can be used if mixed with a large proportion as possible of the gasoline remaining in the tank.

The one precaution to be observed is to keep the engine running and to keep it hot, even if running with a retarded spark is necessary in order to prevent the cylinders from becoming too cool to vaporize the charges properly.

Difficulties with the mixture are sure to occur, but can be remedied by careful attention to the regular adjustments.

## FAT MAN'S CONVENIENCE.

A novel combination of car lock and tilting steering wheel is offered in a device which provides for splitting the wheel in the middle at the pressure of a button, the half toward the driver dropping down against the steering column. Here locking devices engage each other, and a Yale lock fastens the wheel against the post, making it impossible to drive the car and at the same time getting the wheel out of the driver's way. It can be installed on any make of machine.

There are several congressional districts that should hurry up and send delegates to the Reichstag.

## HINTS FOR DRIVERS

Don't race the motor when shifting gears.

Don't violate the unwritten rules of the road.

Don't overwork the motor on hills—shift gears.

Don't fail to carry necessary license numbers.

Don't abuse the brakes. Apply them gradually.

Don't drive through traffic with head lamps lighted.

Don't shift into or out of reverse when car is moving.

Don't drive fast on wet pavement—the car is liable to skid.

Don't start on a trip without a full gasoline tank and plenty of oil.

Don't descend extremely steep grades before shifting into one of the lower gears.

Don't fail to keep the brakes adjusted.

Don't use dirty water in your radiator.

Don't turn corners too rapidly. It is hard on tires.

## ESPECIALLY FOR FAIR SEX.

Silk and wool mixed sweaters in fancy plaids are very popular to wear under the loose coats. One particularly pretty is in green, pink and black plaid; the cuffs, collar and girdle are black. The girdle is odd, as it is very wide and buttons down the front, vestee fashion. A popular Shetland sweater is knitted of army tan, it is the slip-on model and has white collar and cuffs of Angora. The sweater is "period in" so that it fits closely to the figure up to the bust line.

Although urging the people to plant all possible land to foodstuffs, the United States government intelligently continues to distribute great amounts of flower seed packages to the constituents of congressmen.

## PROPOSED TAX ON GASOLINE

Motorists will "do their bit" by standing for another sharp raise in gasoline if tentative provisions in the proposed war revenue bill are retained. The plan now is to tax refined petroleum and gasoline on the basis of 10 per cent of the wholesale price. This would amount, hereabouts to nearly 2 cents a gallon. It has been agreed in subcommittee that the only tax on automobiles will be at the factory and will be levied according to the value of the car. The rates as proposed by Secretary McAdoo are small, ranging from \$1 to \$10.

## AUTO PRICES TILTED UP

Since Nov. 1 last year forty manufacturers of automobiles have raised prices on their cars, increases ranging from \$10 to \$700. The average advance is \$146 a car. All told, since the early part of 1916, more than 100 motor car makers have put up their prices.

## TOURING CAR FOR CAMP

**Special Waterproofed Machine, Fully Equipped with Paraphernalia to be Built by New Company.**

A company has been formed to manufacture a special touring car, equipped with full camping paraphernalia. The cruiser is to appear as a two-passenger roadster, most of the space back of the front seat being devoted to the stowing of camping equipment. The rear compartment will carry a tent, folding bed, table, chairs, bed clothing, a stove and places for carrying food. The car will be made completely waterproof.

## PERFUMED AUTO LATEST.

Fashion's latest fad is to have the car perfumed. This does not mean to have just an ordinary sachet used, but an odor that out door air and dampness will bring up and keep fresh for a year.

## The WILMO MANIFOLD

Completely Vaporizes Gasoline

Phone for further particulars

Wilmette 628

North Shore Garage

611 Railroad Ave. Wilmette, Ill.

The Best Oils Refined

## Mobiloils

Oils, Soaps Grease, Waste Cheese Cloth

A grade for each type of motor

Distributed by

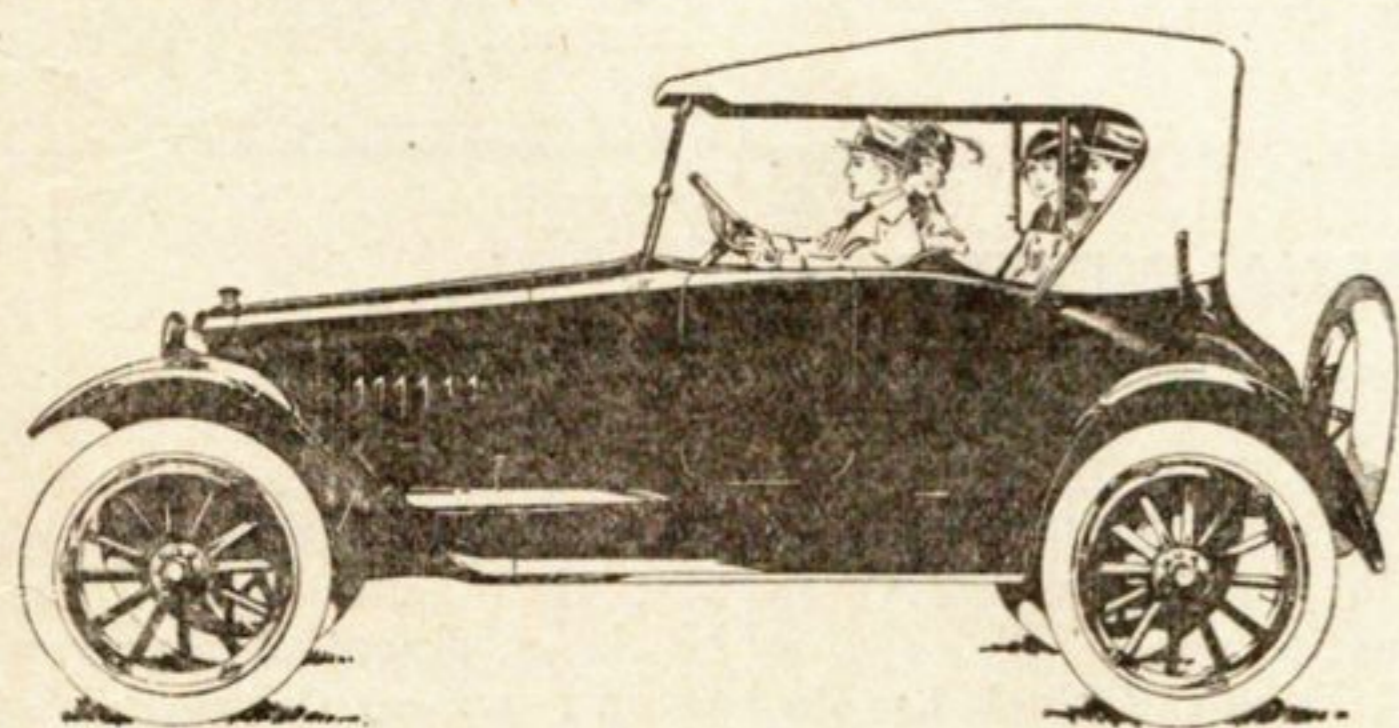
## Universal Oil Company

704 Wells Street

Chicago, Ill.

Phone, Superior 4893

## SAXON "SIX"



### An Unusual New Car Saxon Chummy Roadster

This new Saxon is of the type that soon will be the vogue in motordom.

Four people are seated comfortably. In front are two easy seats with an ample aisle between. And there is a roomy rear seat for two additional passengers.

This car is equipped with the powerful, flexible Saxon "Six" motor built by Continental. It has Timken axles and full Timken bearings. Every mechanical feature is of the same fine quality. Price \$865, f. o. b. Detroit. Increase in price about May 15.

Phone WILMETTE 587

## WEIHE MOTOR SALES COMPANY

621 West Railroad Avenue

WILMETTE

### Willys Six

Touring - - \$1425

### Willys-Knights

Four Touring \$1395

Four Coupe - \$1650

Four Sedan - \$1950

Four Limousine \$1950

Eight Touring \$1950

All prices f. o. b. Toledo  
Subject to change without notice  
"Made in U. S. A."



## MOTOR CARS

They embody the wisdom of the unmatched Willys experience in building cars of this type.

They are dominant values, care of proven dependability and sterling worth.

Their new beauty, their perfected easy riding qualities, their proven sturdiness and mechanical excellence, their admitted tire and fuel oil economy make them worthy of the confidence we enjoy, that they will still further enhance Willys prestige.

NOW IS THE TIME to have your car Painted, call us up and our man will call and make an estimate for you.

MOBILE,

SEXTON'S

and other High

Grade OILS

GOODYEAR

and MITCHELIN TIRES

BE SURE of your Tires, the miles slip behind you and make motoring a real pleasure.

PHONE 166 WINNETKA For Demonstration

# WINNETKA MOTOR COMPANY

Wm. T. Wehrstedt, Proprietor

North Shore Distributors for OVERLANDS and WILLYS-KNIGHT Motor Cars.

562 LINCOLN AVENUE

WINNETKA, ILLINOIS